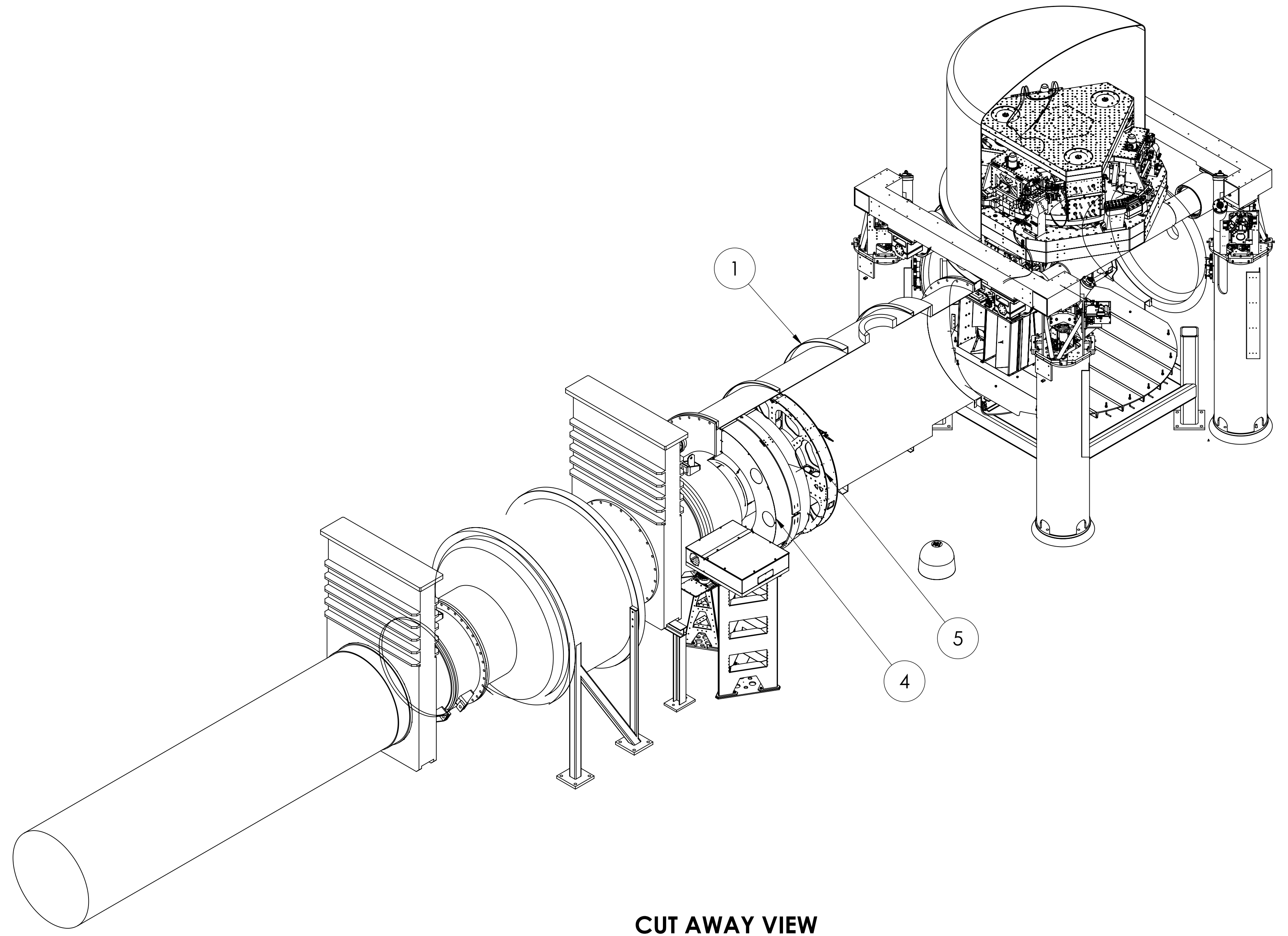
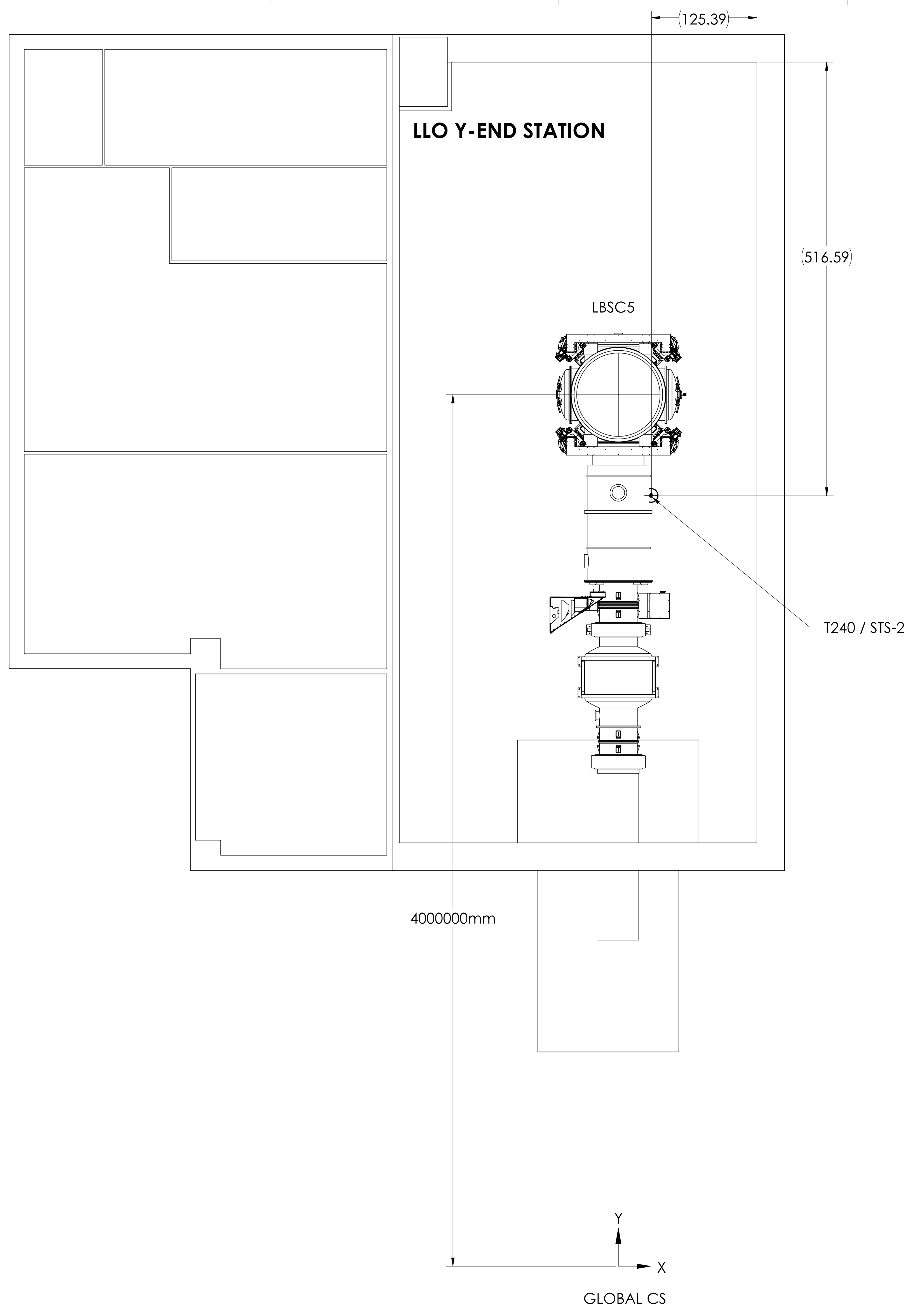
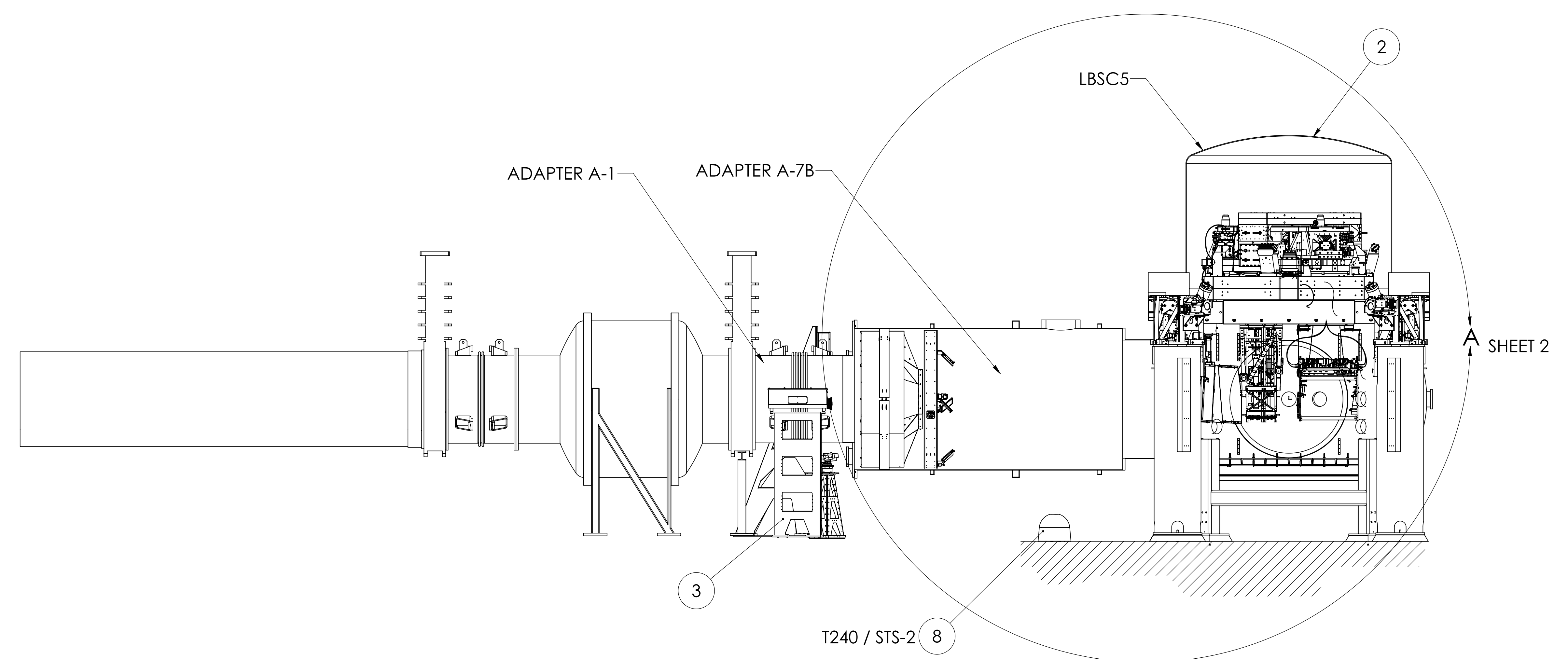


REV.	DATE	DCN #	DRAWING TREE #
V3	18 OCT 2012	-	-
v4	24 JAN 2014	-	-
v6	25 JUL 2014	E1400335-x0	-

**LLO Y-END STATION**



**CUT AWAY VIEW**



LIST OF SUSPENSION	
LLO - L1	OPTIC(s)
BSC5	ETMY

- 1) REFER TO LIGO D1201550 FOR aLIGO, CARTRIDGE & CLEAN ROOM LAYOUT.
- 2) ALL ITEMS SHOWN FOR VISUAL PURPOSES ONLY. PLEASE REFER TO P/N LISTED IN THE BOM FOR DETAILS.
- 3) FOR RACK, CABLE TRAY LAYOUT AND EXTERNAL OPTIC TABLE REFER TO D1201231

ITEM NO.	PART NUMBER	DESCRIPTION	QTY.
8	TRILLIUM 240 OR EQ.	SEISMOMETER	1
7	G1000702	Floor Occupancy, OpLev & PCal, LLO Y-End Station	1
6	D1000375	aLIGO AOS Fully Detailed & Envelope for OpLev & Pcal Installations (ETMY- LHO, LLO)	1
5	D1200174-01	aLIGO, PCAL-VIDEO CAM, PERISCOPE, Y-ARM	1
4	D1003228	MANIFOLD CRYO BAFFLE ASSY, ETM Y	1
3	D100676-02	aLIGO, PCAL-VIDEO CAM, PERISCOPE	1
2	D0900506	AdvLIGO Systems BSC5-L1, Top Level Chamber Assembly	1
1	D0901861	aLIGO Vacuum Equipment Layout, LLO Y-End Station	1

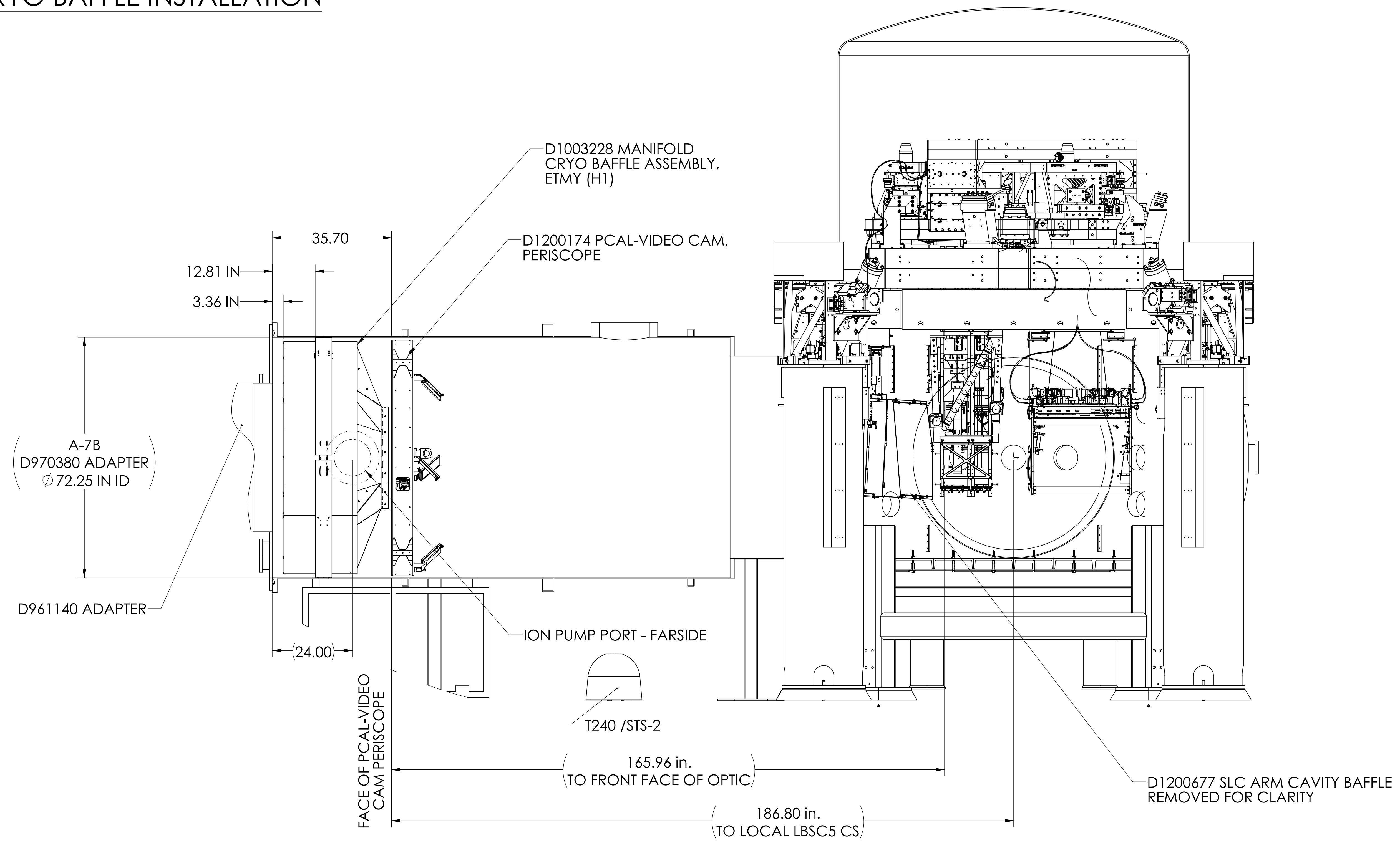
ITEM NO. 8 IS A TEMPORARY REPLACEMENT FOR STS-2  
NOT SHOWN

DIMENSIONS ARE IN INCHES		CALIFORNIA INSTITUTE OF TECHNOLOGY MASSACHUSETTS INSTITUTE OF TECHNOLOGY		PART NAME <b>SYSTEM LAYOUT, LLO Y-END STATION</b>	
MATERIAL --		FINISH -- μinch		SYSTEM <b>ADVANCED LIGO</b>	
NEXT ASSY D0901464		SUB-SYSTEM SUS		DESIGNER K. BUCKLAND 18 OCT 2012	
				SIZE DWG. NO. <b>E D0901464</b>	
				CHECKER SEE DCC	
				APPROVAL SEE DCC	
				SCALE: 1:32 PROJECTION:	
				REV. <b>v6</b>	

D:\0901464\AdvLIGO Systems Layout\LLO Y-End Station\PART PLOT\REV. X.dwg DRAWING PLOT REV. X.dwg



# PCAL & MANIFOLD CRYO BAFFLE INSTALLATION



DETAIL A  
SCALE 1 : 16

## GENERAL PCAL-VIDEO CAM PERISCOPE & MANIFOLD CRYO BAFFLE INSTALLATION INSTRUCTIONS:

1. REMOVE D961140 A-1 ADAPTER.
2. INSTALL D1200174 PCAL ASSEMBLY INTO D970380 A-7B ADAPTER
3. INSTALL D1003228 MANIFOLD CRYO BAFFLE ASSEMBLY INTO D970380 A-7B ADAPTER

