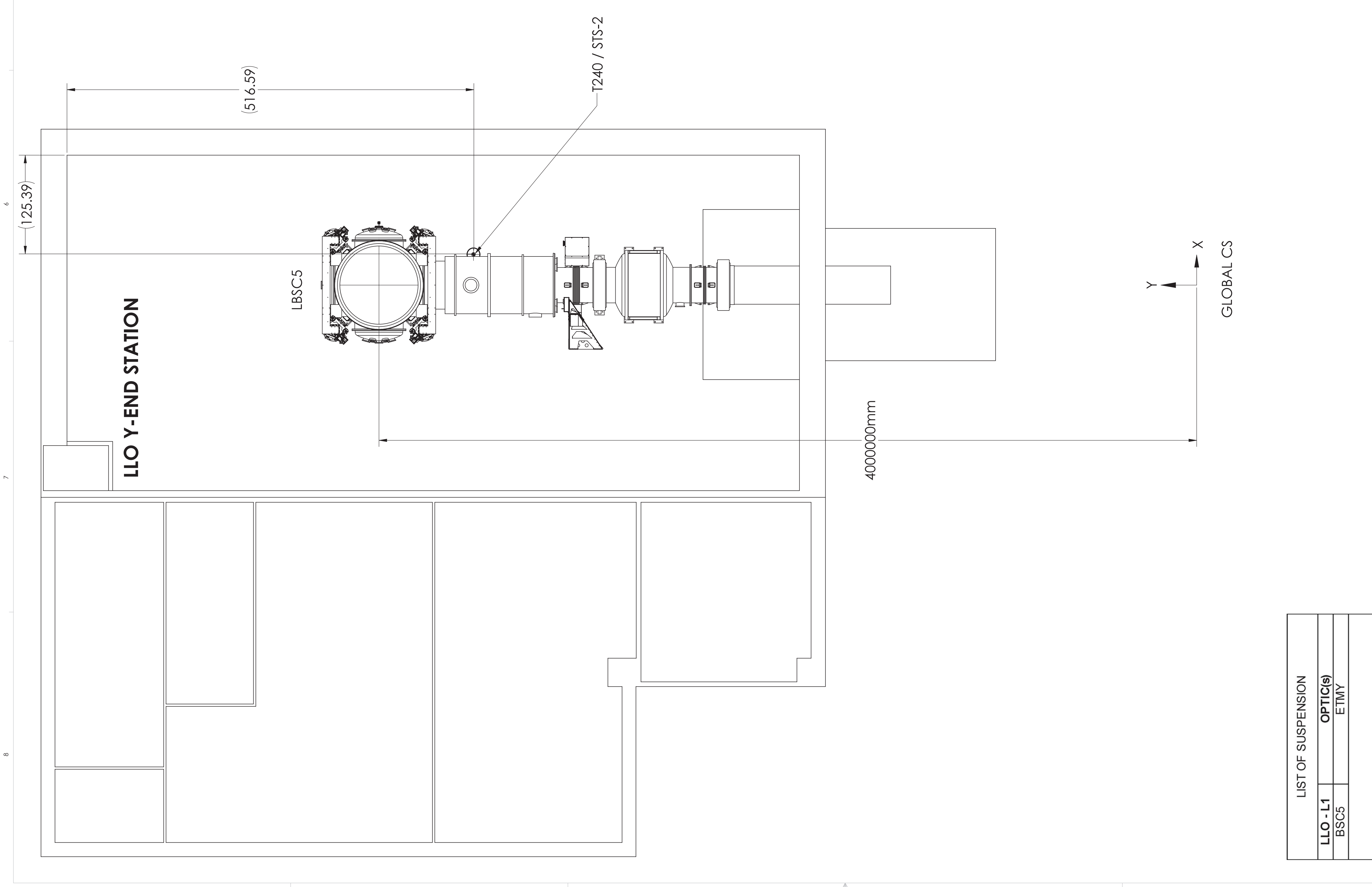


REV	DATE	DCN #	DRAWING TREE #
V3	18 OCT 2012		
V4	24 JAN 2014		
V6	25 JUL 2014	E1400335-X0	

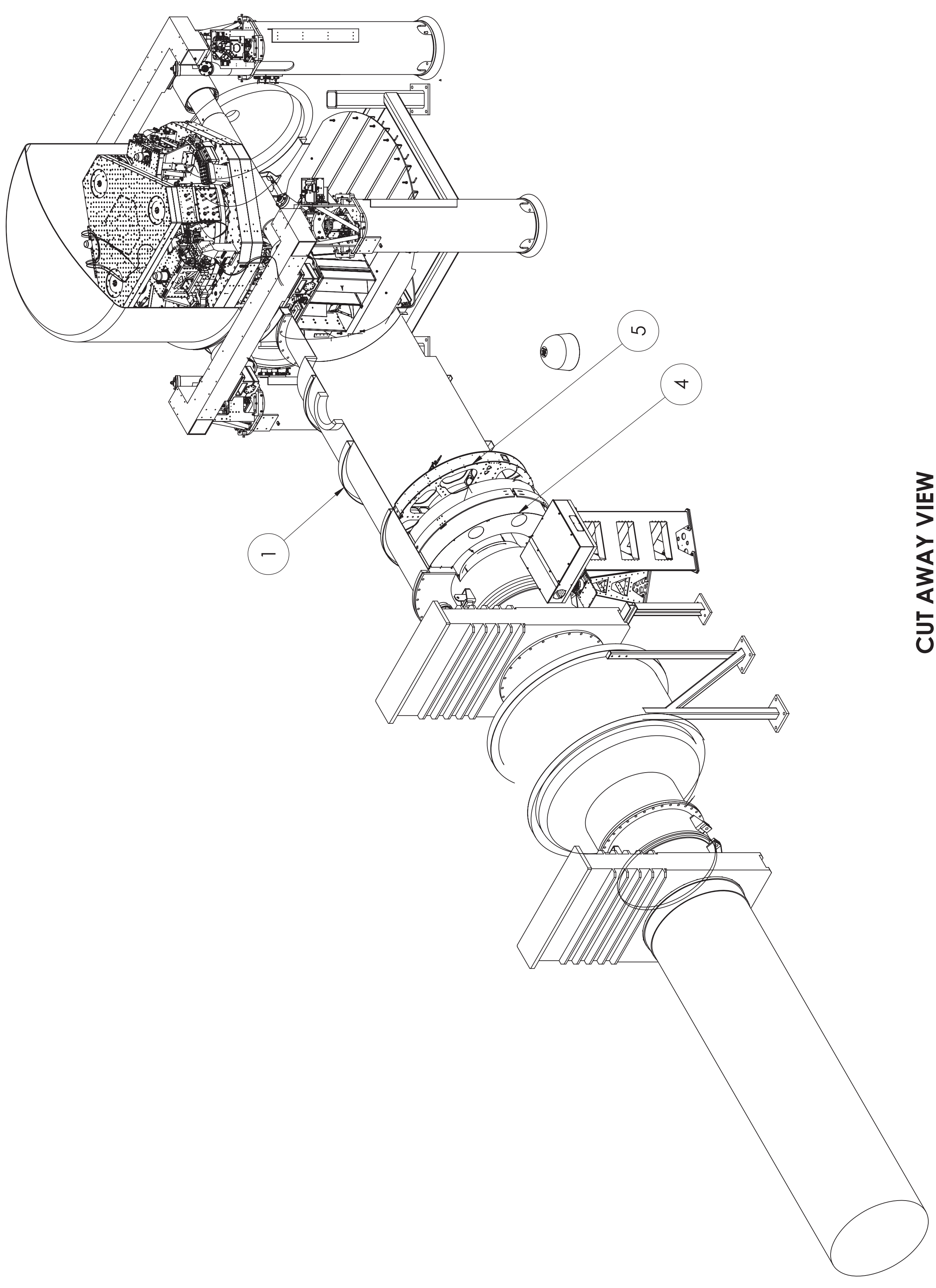


LIST OF SUSPENSION	
LLO - L1	OPTIC(S)
BSC5	ETMY

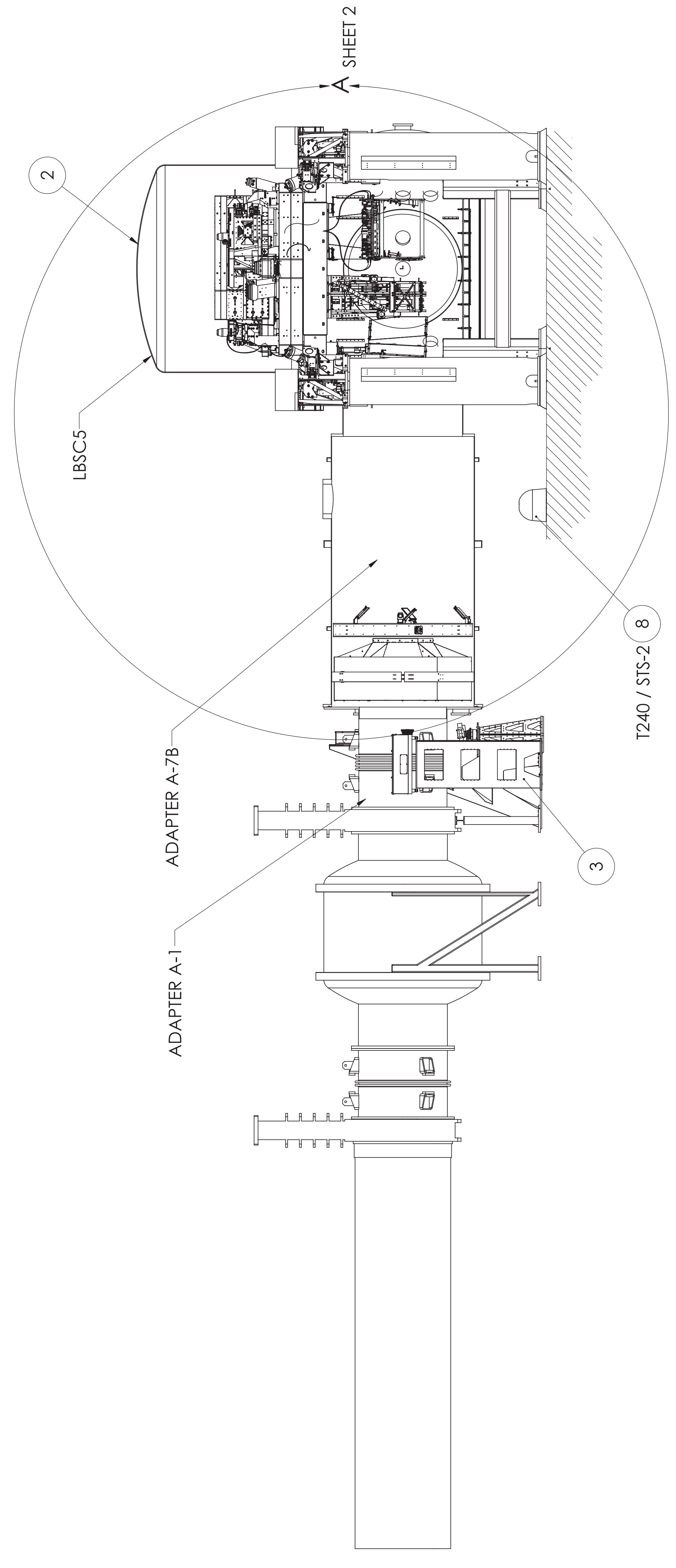
- REFER TO LIGO D1201550 FOR aLIGO, CARTRIDGE & CLEAN ROOM LAYOUT.
- ALL ITEMS SHOWN FOR VISUAL PURPOSES ONLY. PLEASE REFER TO P/N LISTED IN THE BOM FOR DETAILS.
- FOR RACK, CABLE TRAY LAYOUT AND EXTERNAL OPTIC TABLE REFER TO D1201231

ITEM NO.	PART NUMBER	DESCRIPTION	QTY.
8	TRILLUM_240	SEISMOMETER	1
7	OR EG.	Floor Occupancy, OptLev & PCal, LLO Y-End Station	1
6	D1000702	aLIGO AOS Fully Detailed & Envelope for OptLev & Pcal Installations (ETMY- LHO, LLO)	1
5	D1200174-01	aLIGO, PCAL-VIDEO CAM, PERISCOPE, Y-ARM MANIFOLD CRYO BAFFLE ASSY, ETM Y	1
4	D1003228	aLIGO, PCAL-VIDEO CAM, PERISCOPE	1
3	D100676-02	AdvLIGO Systems BSC5-L1, Top Level Chamber Assembly	1
2	D0900506	aLIGO Vacuum Equipment Layout, LLO Y-End Station	1
1	D0901861		1

ITEM NO. 8 IS A TEMPORARY REPLACEMENT FOR STS-2
NOT SHOWN



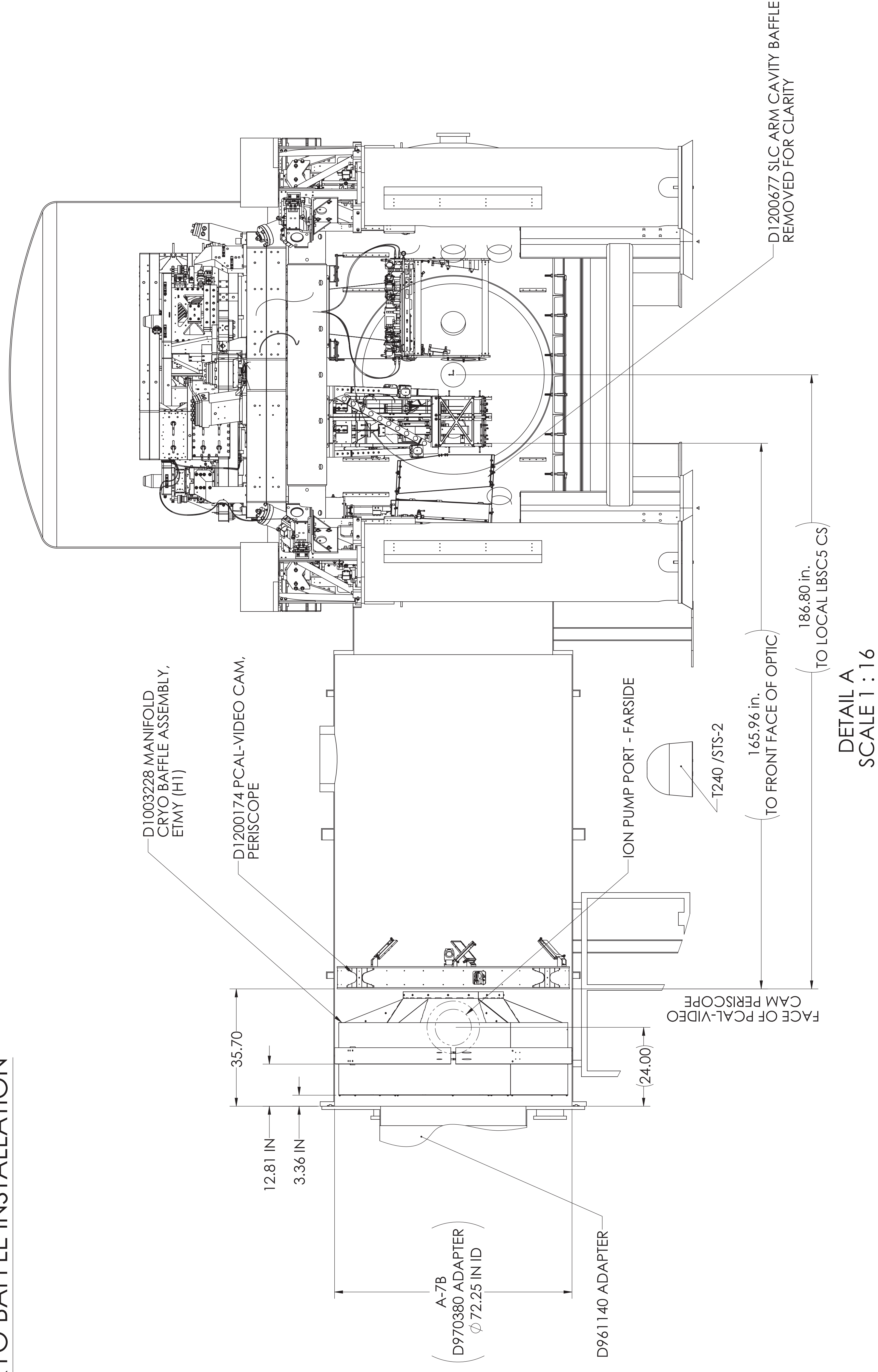
CUT AWAY VIEW



PART NAME		SYSTEM LAYOUT, LLO Y-END STATION	
DESIGNER	SUB-SYSTEM	SIZE	DWG. NO.
K. RUCKLARD	SUS	E	D0901464
CHECKER	SEE DCC	SCALE	PROJECTION
APPROVAL	SEE DCC	1:32	SHEET 1 OF 2

CALIFORNIA INSTITUTE OF TECHNOLOGY
LIGO MASSACHUSETTS INSTITUTE OF TECHNOLOGY
SYSTEM ADVANCED LIGO SUS
NEXT ASSY D0901464
MATERIAL --- FINISH --- UNFINISH

PCAL & MANIFOLD CRYO BAFFLE INSTALLATION



GENERAL PCAL-VIDEO CAM PERISCOPE & MANIFOLD CRYO BAFFLE
INSTALLATION INSTRUCTIONS:

1. REMOVE D961140 A-1 ADAPTER.
2. INSTALL D1200174 PCAL-ASSEMBLY INTO D970380 A-7B ADAPTER
3. INSTALL D1003228 MANIFOLD CRYO BAFFLE ASSEMBLY INTO D970380 A-7B ADAPTER

