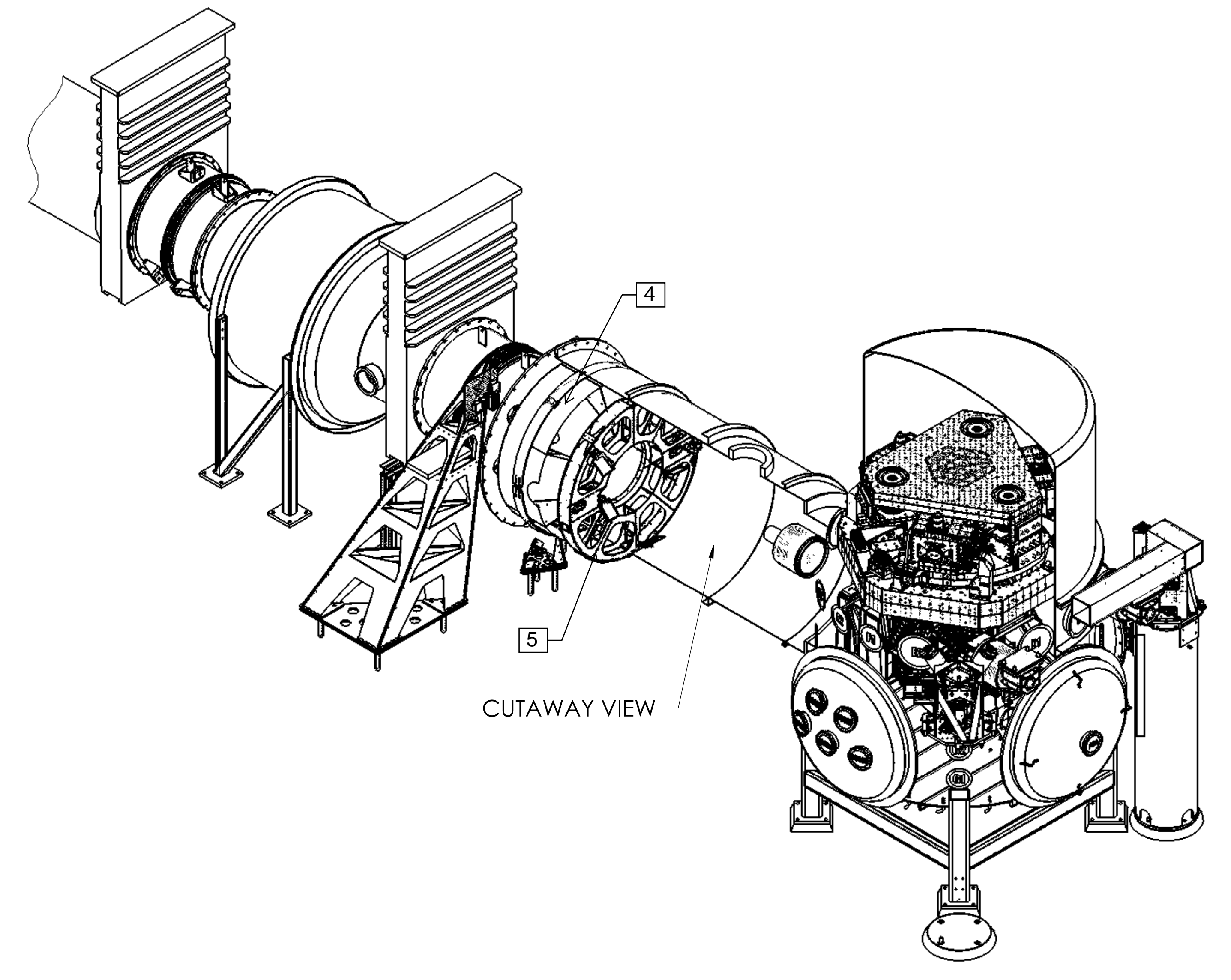
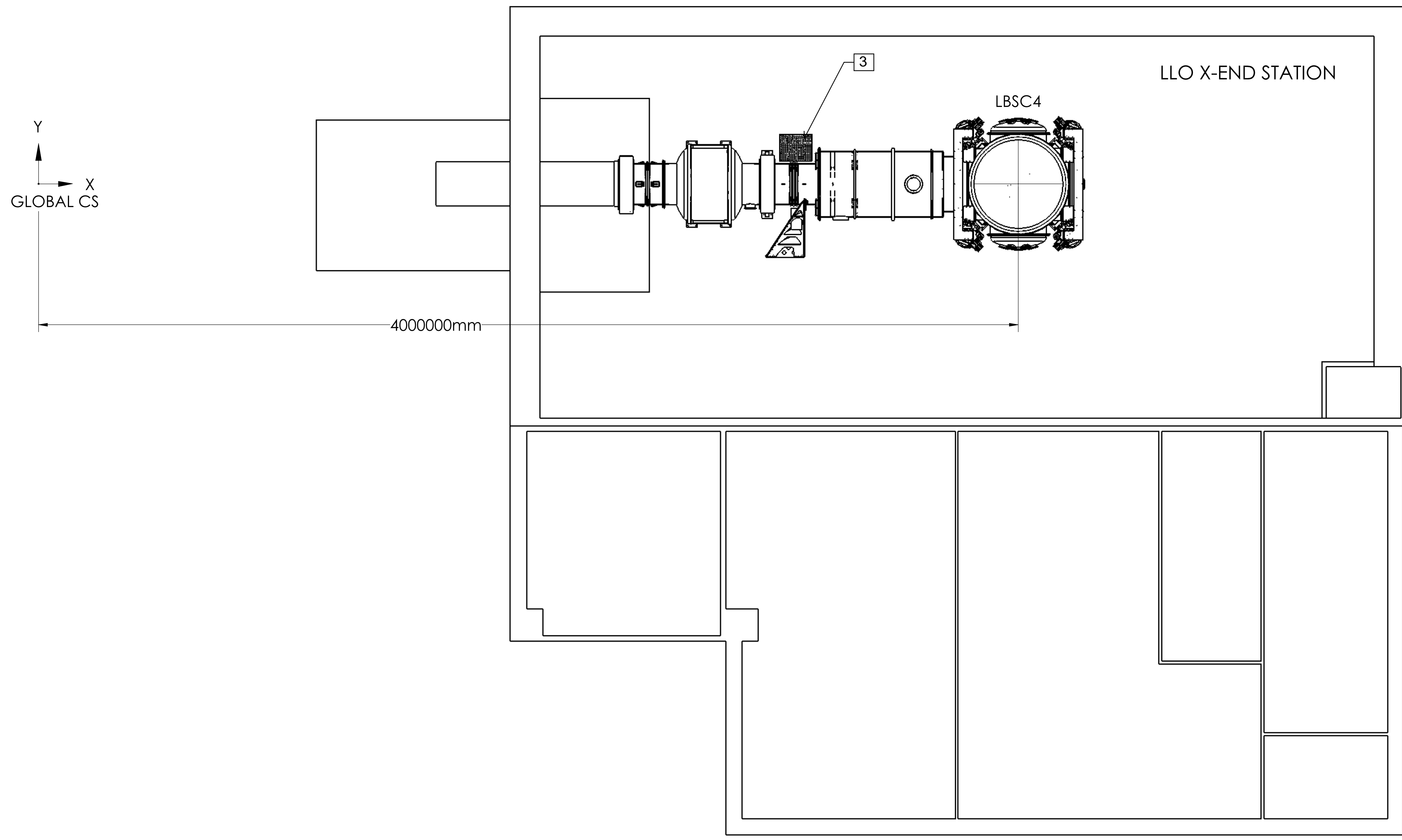
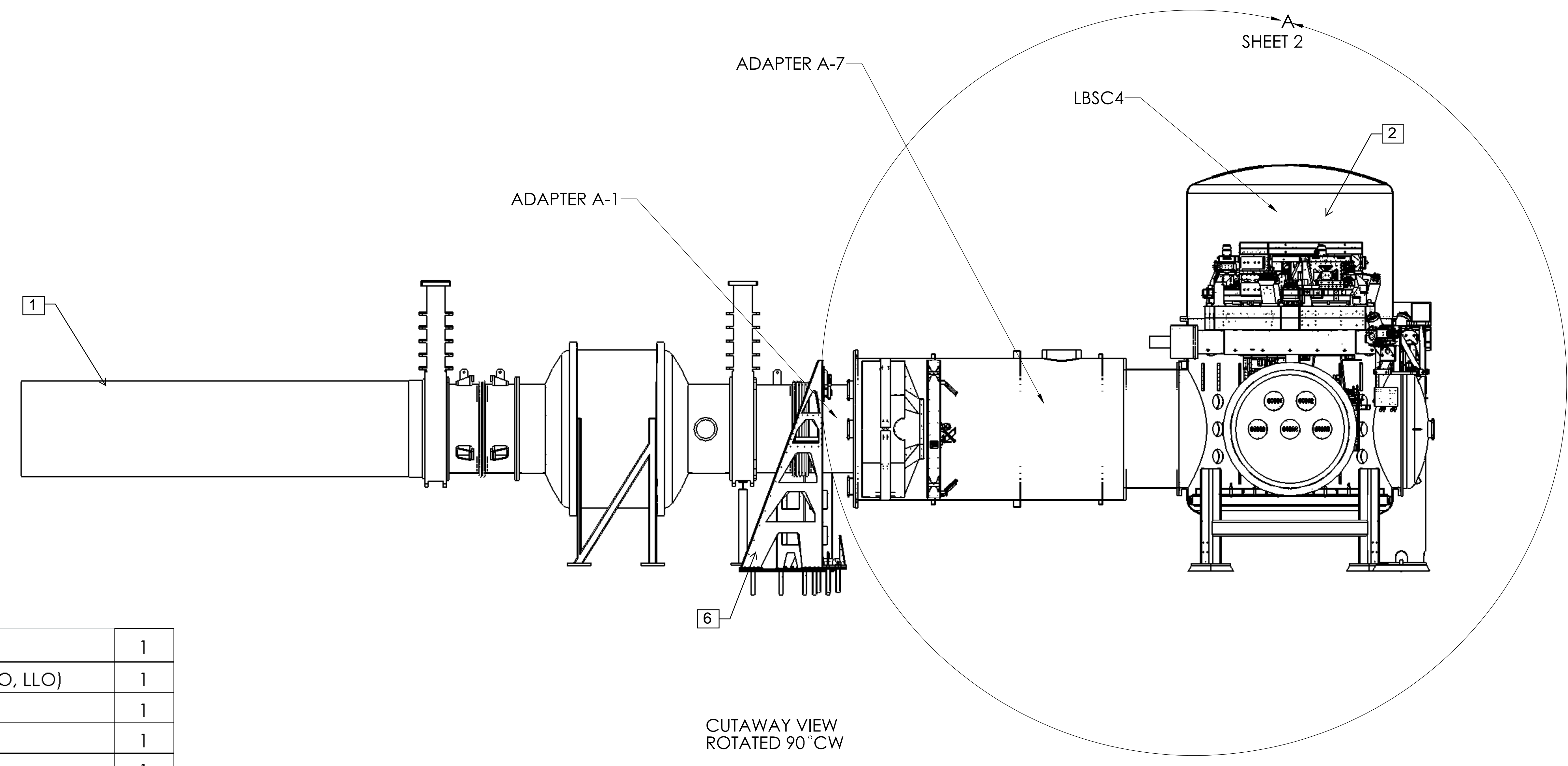


REV.	DATE	DCN #	DRAWING TREE #
V3	23 OCT 2012	-	-
v5	09 APR 2014	-	-
-	-	-	-



LIST OF SUSPENSION	
LLO-L1	OPTIC(s)
BSC4	ETMX

- 1) REFER TO LIGO D1201550 FOR aLIGO, CARTRIDGE & CLEAN ROOM LAYOUT.
- 2) ALL ITEMS SHOWN FOR VISUAL PURPOSES ONLY. PLEASE REFER TO P/N LISTED IN THE BOM FOR DETAILS.
- 3) FOR RACK, CABLE TRAY LAYOUT AND EXTERNAL OPTIC TS TABLE REFER TO REFER TO D1201292.



ITEM NO.	PART NUMBER	DESCRIPTION	QTY.
7	G1000701	Floor Occupancy, OpLev & PCal, LLO X-End Station	1
6	D1000323	ALIGO AOS FULLY DETAILED & ENVELOPE FOR OPLEV & PCAL INSTALLATIONS (ETMX- LHO, LLO)	1
5	D1200174	aLIGO, PCAL-VIDEO CAM, PERISCOPE	1
4	D1003181	MANIFOLD CRYO BAFFLE ASSY, ETMX	1
3	D1000676-01	aLIGO, PCAL-VIDEO CAM, PERISCOPE, X-ARM	1
2	D0900471	aLIGO Systems, BSC4-L1 Top Level Chamber Assembly	1
1	D0901860	AdvLIGO, Vacuum Equipment Layout, LLO X-End Station	1

NOTES AND TOLERANCES: (UNLESS OTHERWISE SPECIFIED)

- INTERPRET DRAWING PER ASME Y14.5-1994
- REMOVE ALL SHARP EDGES .005-.015, FOR MACHINED PARTS. ROUND ALL EDGES APPROXIMATELY R.02, FOR SHEET METAL PARTS.
- DO NOT SCALE FROM DRAWING.
- ALL MACHINING FLUIDS MUST BE FULLY SYNTHETIC, FULLY WATER SOLUBLE AND FREE OF SULFUR, SILICONE, AND CHLORINE.

DIMENSIONS ARE IN INCHES  
TOLERANCES:  
.XX ± .01  
.XXX ± .005  
ANGULAR ± 0.5°

MATERIAL: -- FINISH: -- UNITS: --

CALIFORNIA INSTITUTE OF TECHNOLOGY  
MASSACHUSETTS INSTITUTE OF TECHNOLOGY

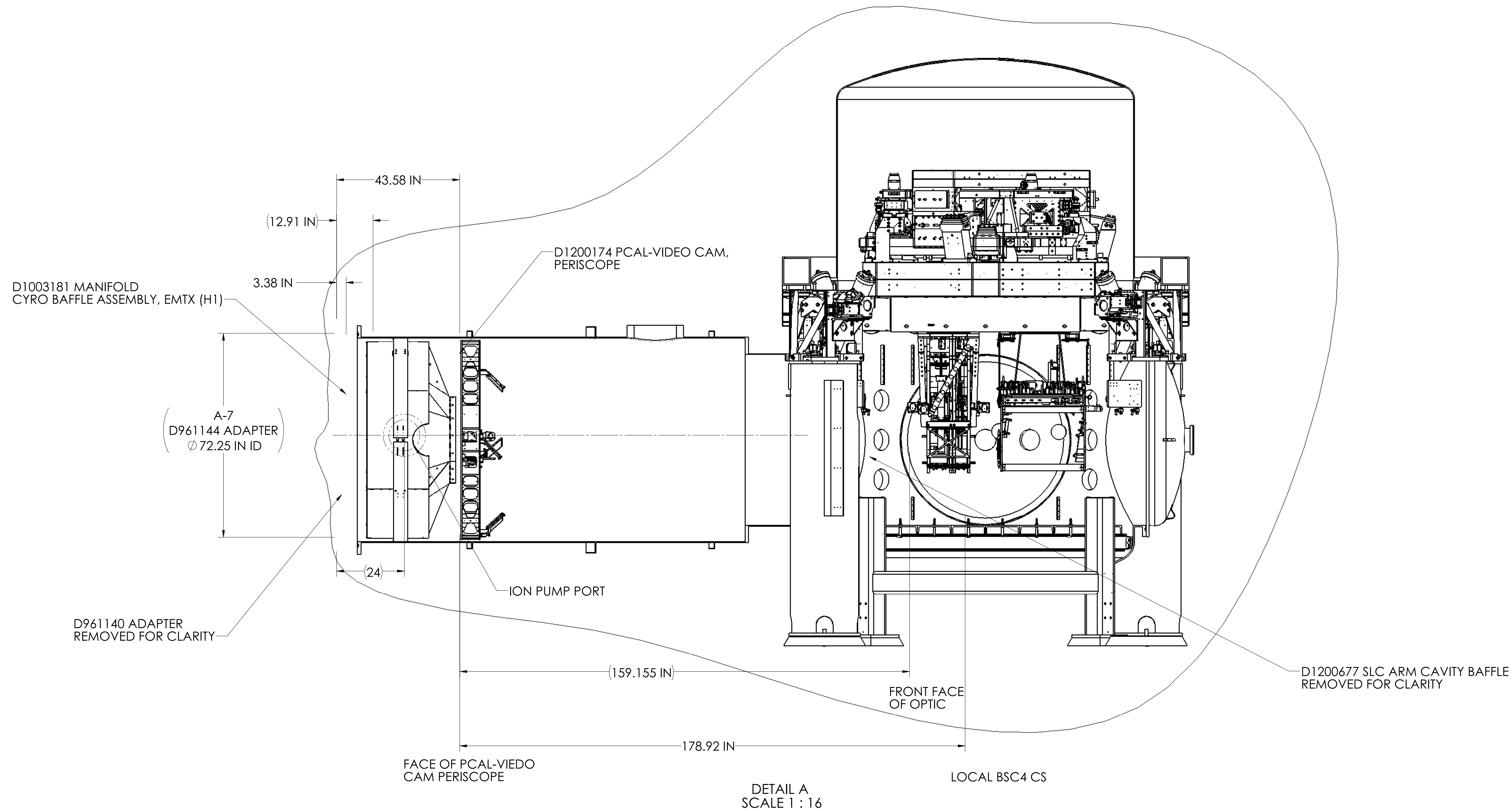
SYSTEM: ADVANCED LIGO SUB-SYSTEM: SYS  
NEXT ASSY: D0901490

PART NAME: SYSTEM LAYOUT, LLO X-END STATION  
DESIGNER: K. BUCKLAND  
DRAFTER: K. BUCKLAND  
CHECKER:  
APPROVAL:

SIZE: E DWG. NO.: D0901465  
SCALE: 1:32 PROJECTION: SHEET 1 OF 2

REV. v5

# PCAL & MAINFOLD CYRO BAFFLE INSTALLATION



## GENERAL PCAL-VIDEO CAM PERISCOPE & MANIFOLD CYRO BAFFLE INSTALLATION INSTRUCTIONS:

1. REMOVE D961140 A-1 ADAPTER.
2. INSTALL D1200174 PCAL ASSEMBLY INTO D970380 A-7B ADAPTER
3. INSTALL D1003181 MANIFOLD CYRO BAFFLE ASSEMBLY INTO D970380 A-7B ADAPTER

