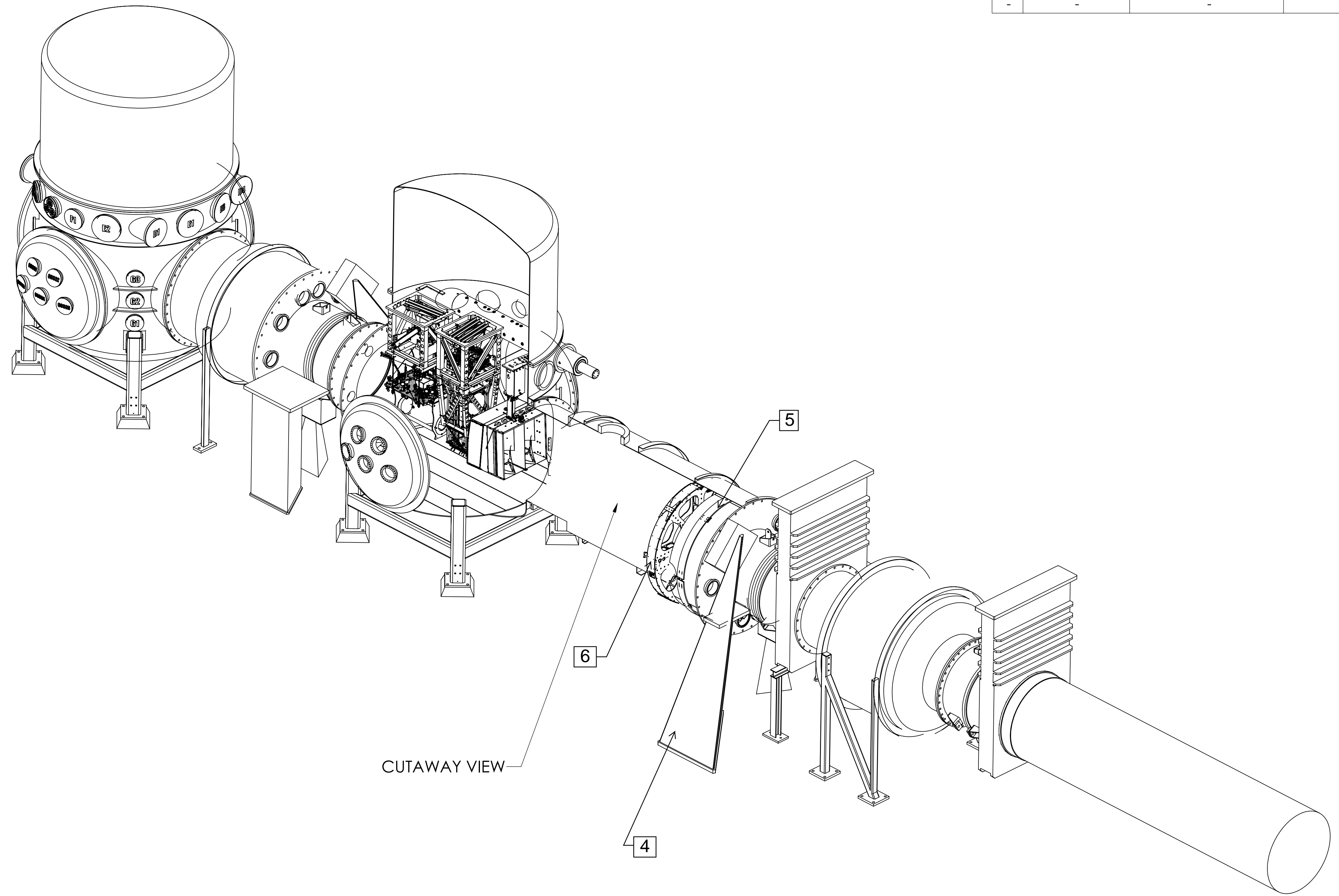
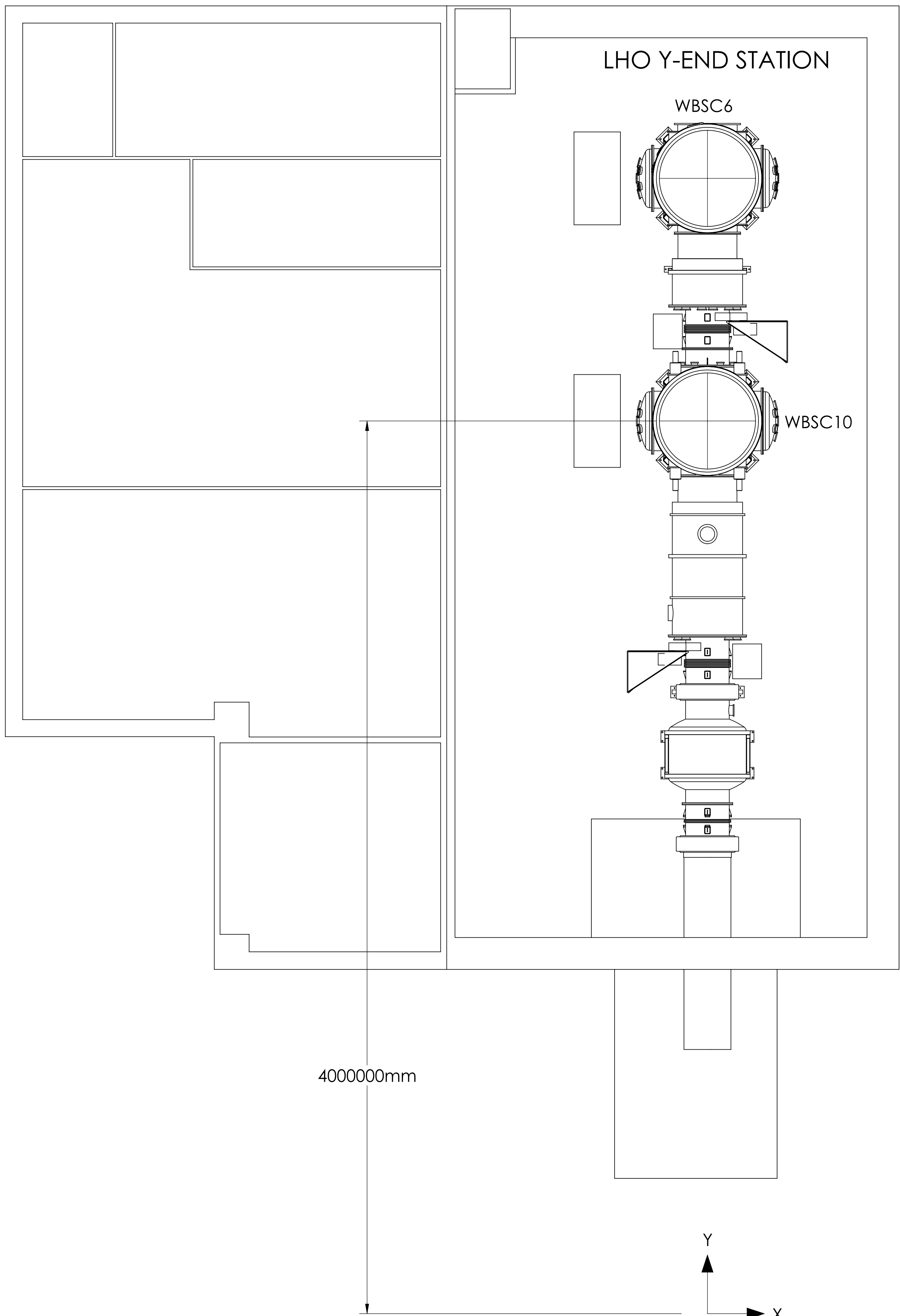


REV.	DATE	DCN #	DRAWING TREE #
V6	24 OCT 2012	-	-
v8	04 APR 2014	-	-
-	-	-	-

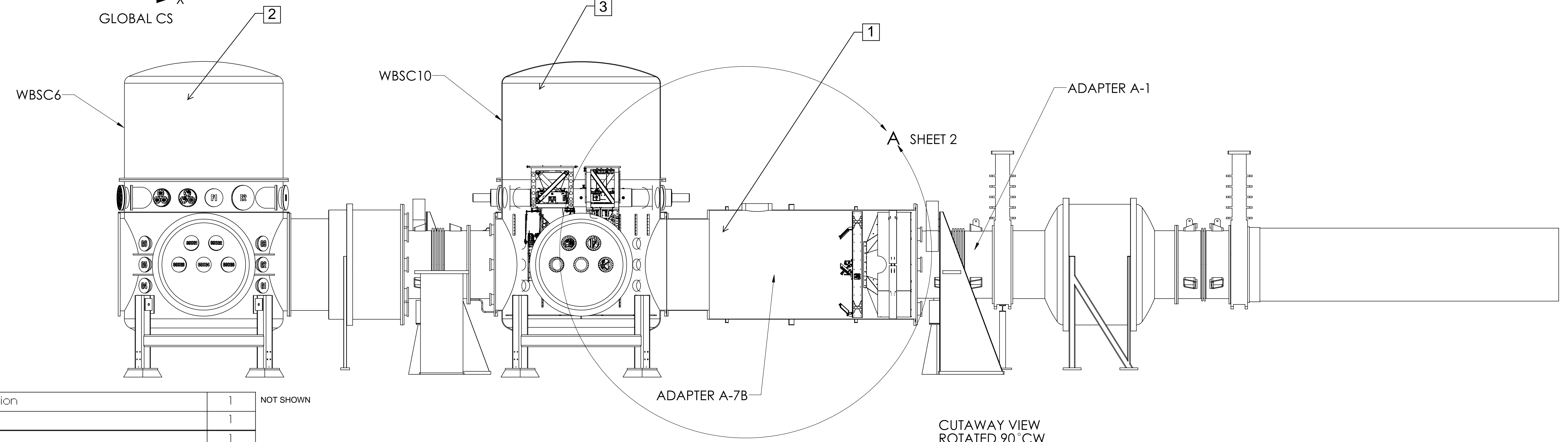


LIST OF SUSPENSION

LHO - H1	OPTIC(s)
BSC10	ETMY
LHO - H2	OPTIC(s)
BSC6	ETMY

NOTE: H2 WILL NOT BE POPULATED

- 1) REFER TO LIGO D1201550 FOR aLIGO, CARTRIDGE & CLEAN ROOM LAYOUT.
- 2) ALL ITEMS SHOWN FOR VISUAL PURPOSES ONLY. PLEASE REFER TO P/N LISTED IN THE BOM FOR DETAILS.
- 3) FOR RACK, CABLE TRAY LAYOUT AND EXTERNAL OPTICS TABLE REFER TO REFER TO D1100024.



ITEM NO.	PART NUMBER	DESCRIPTION	QTY.
7	G1000739	Floor Occupancy, OpLev & PCal, LHO Y-End Station	1
6	D1200174	aLIGO, PCAL-VIDEO CAM, PERISCOPE	1
5	D1003228	Manifold Cryo Baffle, Top Assembly_ETMY H1/L1	1
4	D1000323	aLIGO AOS Fully Detailed & Envelope for OpLev & Pcal Installations (ETMX-LHO, LLO)	1
3	D0901154	aLIGO Systems, WBSC10-H1 Top Level Chamber Assembly	1
2	D0900512	aLIGO Systems, WBSC6-H2 Top Level Chamber Assembly	1
1	D0901867	AdvLIGO, Vacuum Equipment Layout, LHO Y-End Station	1

NOT SHOWN

NOTES AND TOLERANCES: (UNLESS OTHERWISE SPECIFIED)

1. INTERPRET DRAWING PER ASME Y14.5-1994  
 2. REMOVE ALL SHARP EDGES .005-.015. FOR MACHINED PARTS. ROUND ALL EDGES APPROXIMATELY R.02. FOR SHEET METAL PARTS.  
 3. DO NOT SCALE FROM DRAWING.  
 4. ALL MACHINING FLUIDS MUST BE FULLY SYNTHETIC, FULLY WATER SOLUBLE AND FREE OF SULFUR, SILICONE, AND CHLORINE.

DIMENSIONS ARE IN INCHES  
 TOLERANCES:  
 .XX ± .01  
 .XXX ± .005  
 ANGULAR ± 0.5°

MATERIAL: N/A  
 FINISH: N/A μinch

CALIFORNIA INSTITUTE OF TECHNOLOGY  
 MASSACHUSETTS INSTITUTE OF TECHNOLOGY

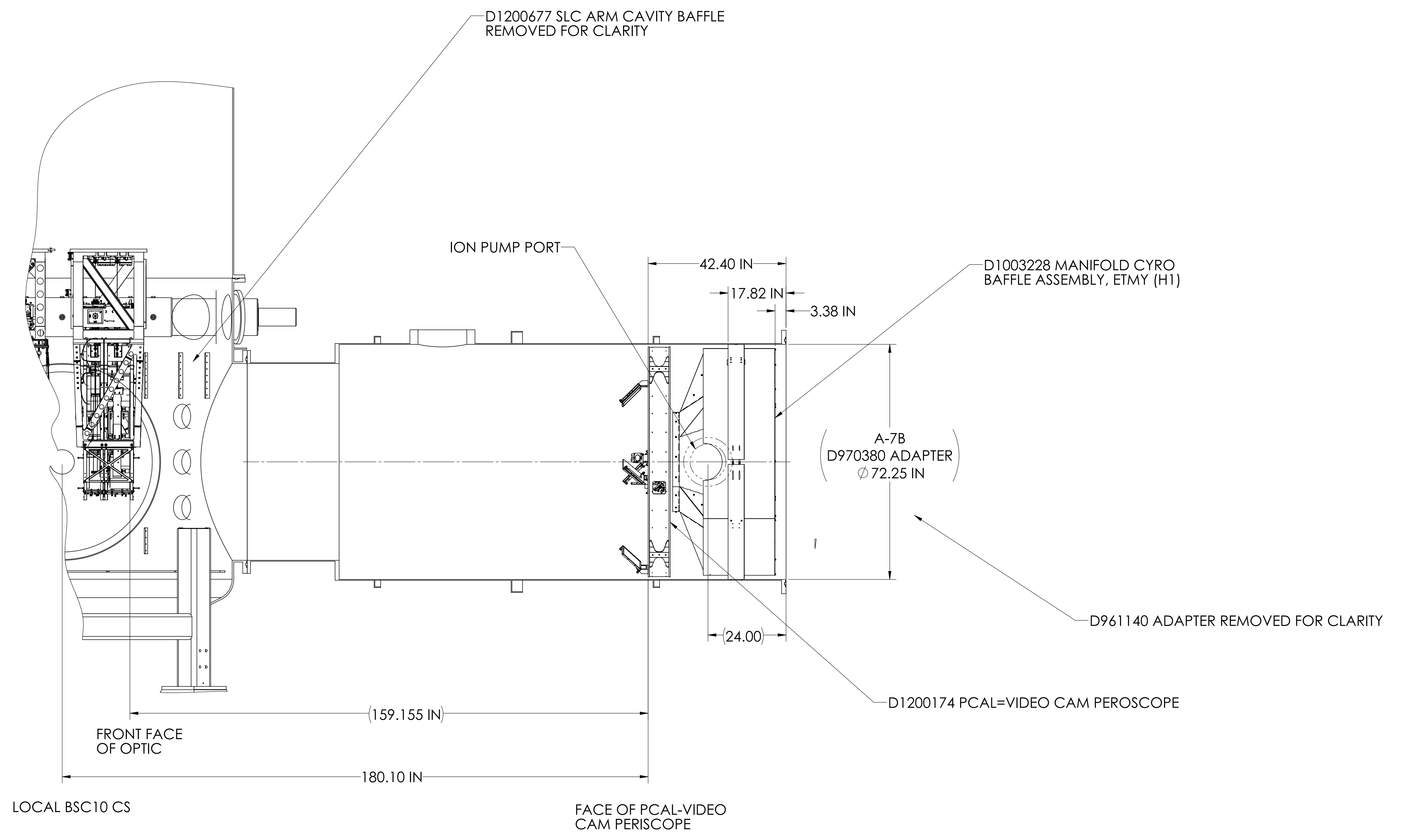
SYSTEM: ADVANCED LIGO  
 SUB-SYSTEM: SUS

PART NAME: SYSTEM LAYOUT, LHO Y-END STATION

DESIGNER: K. BUCKLAND  
 DRAFTER: K. BUCKLAND  
 CHECKER:  
 APPROVAL:

SIZE: E  
 DWG. NO.: D0901467  
 REV.: v8

SCALE: 1:32  
 PROJECTION: 1st Angle  
 SHEET 1 OF 2



DETAIL A  
SCALE 1 : 16

