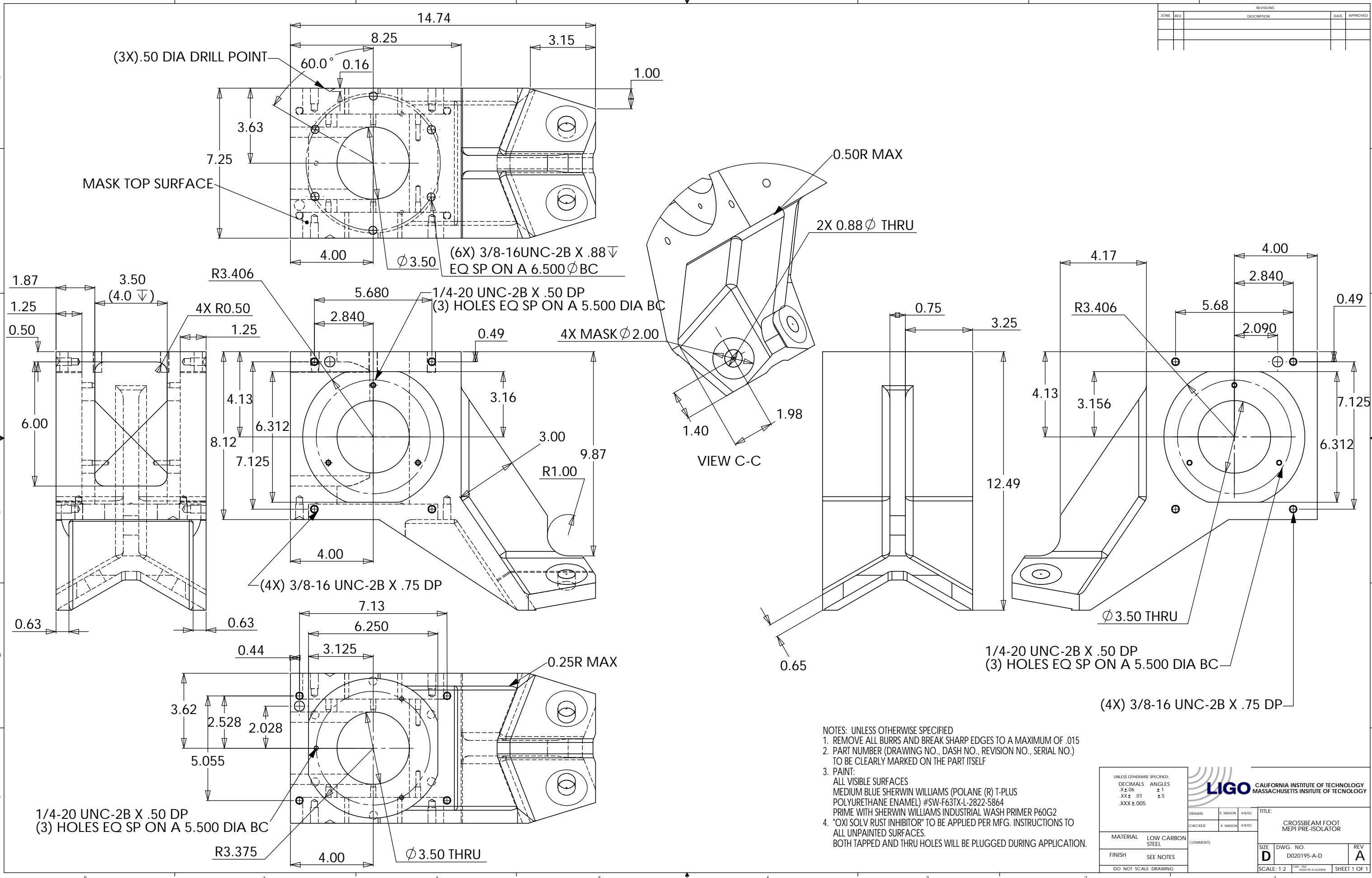



REVISIONS				
ZONE	REV	DESCRIPTION	DATE	APPROVED



- NOTES: UNLESS OTHERWISE SPECIFIED
1. REMOVE ALL BURRS AND BREAK SHARP EDGES TO A MAXIMUM OF .015
 2. PART NUMBER (DRAWING NO., DASH NO., REVISION NO., SERIAL NO.) TO BE CLEARLY MARKED ON THE PART ITSELF
 3. PAINT:
ALL VISIBLE SURFACES
MEDIUM BLUE SHERWIN WILLIAMS (POLANE (R) T-PLUS
POLYURETHANE ENAMEL) #SW-F63TX-L-2822-5864
PRIME WITH SHERWIN WILLIAMS INDUSTRIAL WASH PRIMER P60G2
 4. "OXI SOLV RUST INHIBITOR" TO BE APPLIED PER MFG. INSTRUCTIONS TO ALL UNPAINTED SURFACES.
BOTH TAPPED AND THRU HOLES WILL BE PLUGGED DURING APPLICATION.

UNLESS OTHERWISE SPECIFIED: DECIMALS ANGLES XX±.06 ±1 .XXX±.01 ±.5 .XXX±.005		 LIGO CALIFORNIA INSTITUTE OF TECHNOLOGY MASSACHUSETTS INSTITUTE OF TECHNOLOGY	TITLE: CROSSBEAM FOOT MEPI PRE-ISOLATOR	
DRAWN K. MASON 4/8/02	CHECKED K. MASON 4/8/02		SCALE: 1:2	REV A
MATERIAL LOW CARBON STEEL		COMMENTS	SIZE D	DWG. NO. D020195-A-D
FINISH SEE NOTES		DO NOT SCALE DRAWING	SHEET 1 OF 1	