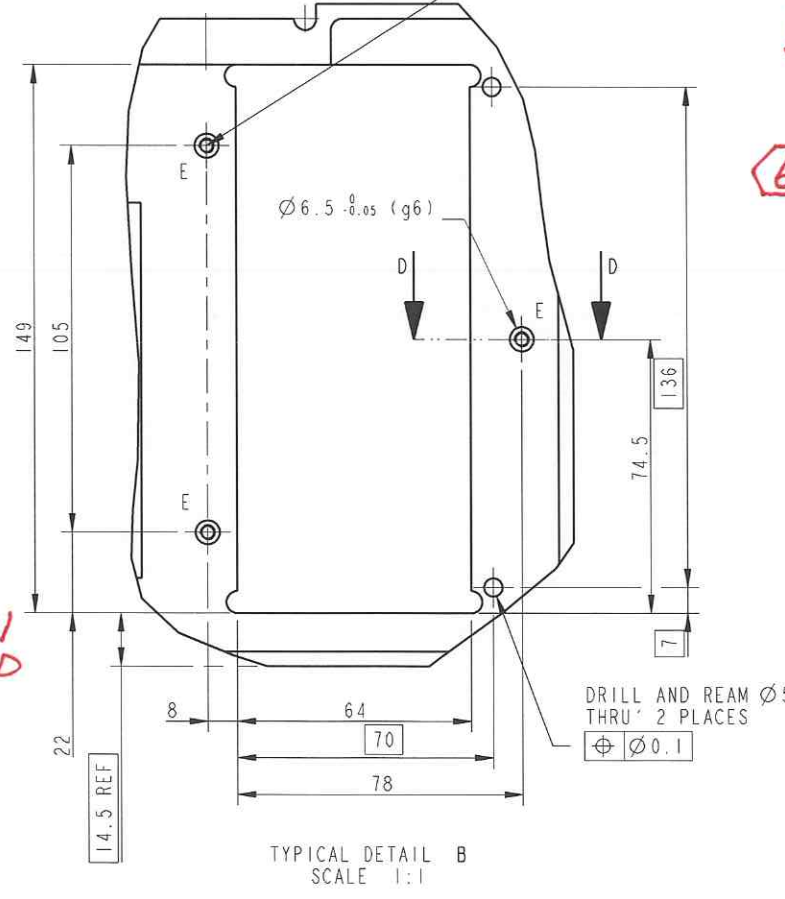
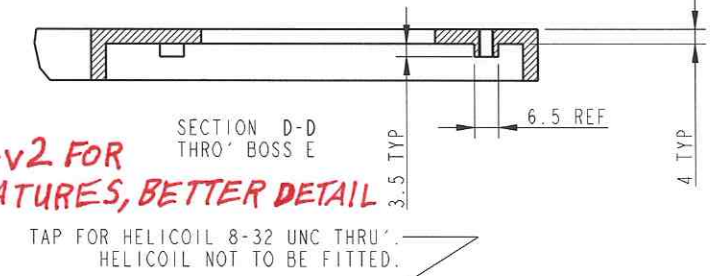
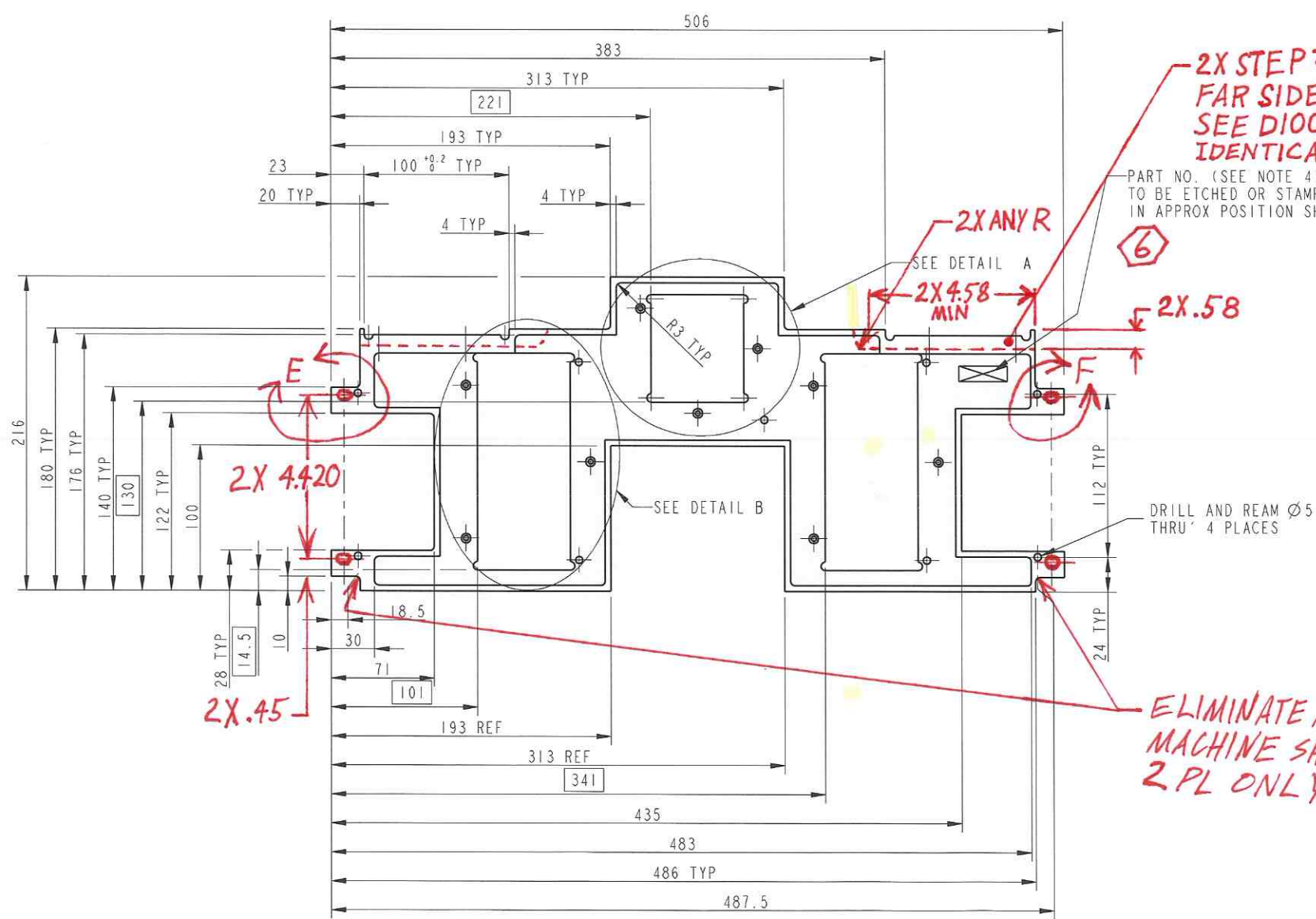
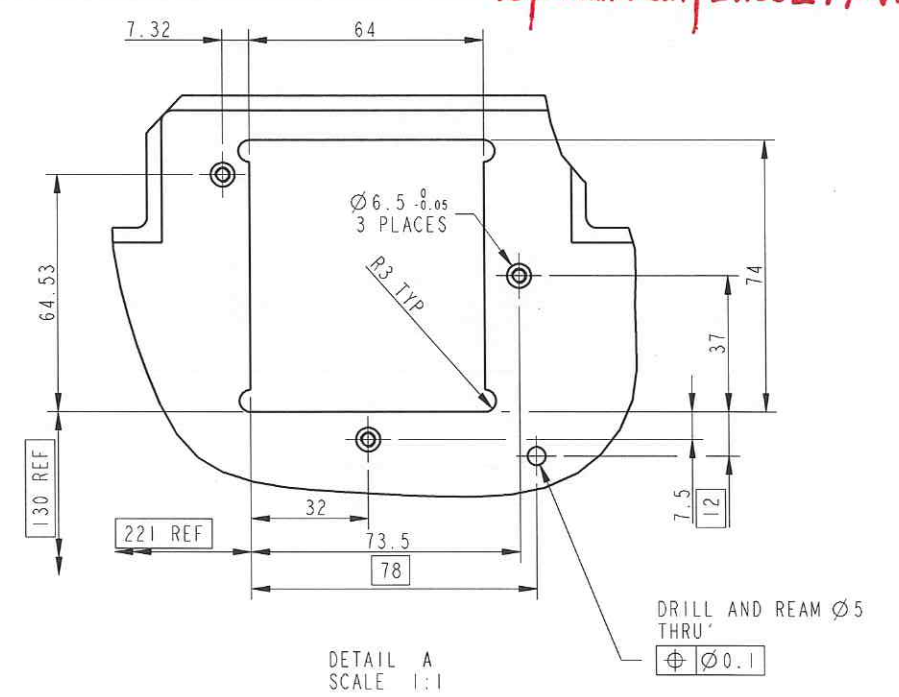
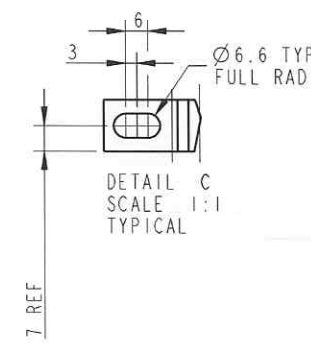
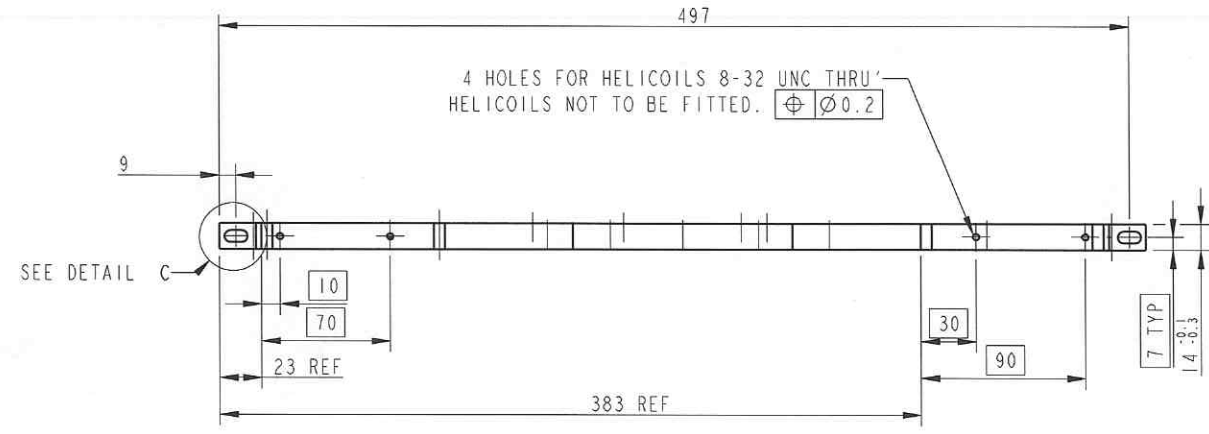


REV	DATE	DCN #	DRAWING TREE #
A	13/OCT/06	E060239	
B	15/DEC/07	E060239-B	

v3/30 MAR 2011 | E1100277-V1



5. REDLINE DIMENSIONS ARE IN INCHES.

6. MARK OUT OLD REVISION LABEL AND REPLACE WITH "v3".

ELIMINATE RADIUS MACHINE SHARP 2 PL ONLY

NOTES: (UNLESS OTHERWISE SPECIFIED)

- REMOVE ALL SHARP EDGES.
- DO NOT SCALE FROM DRAWING.
- ALL MACHINING FLUIDS SHALL BE WATER SOLUBLE AND FREE OF SULFUR, CHLORINE AND SILICONE, SUCH AS CINCINNATI MILBROUN 3 (MITECH #10 (STAINLESS STEEL)).
- SCHEMATIC: ENGINEER OR STAMP DRAWING PART NUMBER ON NOTED SURFACE OF PART AND A THREE DIGIT SERIAL NUMBER. SERIAL NUMBERS START AT 001 FOR THE FIRST PART AND PROCEED CONSECUTIVELY. USE "0" HIGH CHARACTERS. EXAMPLE: 000100 OR, A VIBRATORY TOOL MAY BE USED.

DIMENSIONS ARE IN mm (INCHES)

FINISH: CLEAN AND DEGREASE

NAME: DATE:

DRWN: I. WILLIAMS 03/10/11

CHECKED: J. WILSON 03/10/11

APPROVED: J. WILSON 03/10/11

SCALE: 1:1 PROJECTION: 1ST ANGLE

CALIFORNIA INSTITUTE OF TECHNOLOGY  
MASSACHUSETTS INSTITUTE OF TECHNOLOGY  
RPI, GLASGOW UNIVERSITY, QED GROUP  
ROUTLEDOR APPLITION LABORATORIES

SYSTEM: aLIGO

SUB-SYSTEM: SUJS

MATERIAL: AL ALLOY 5083 H4

FINISH: CLEAN AND DEGREASE

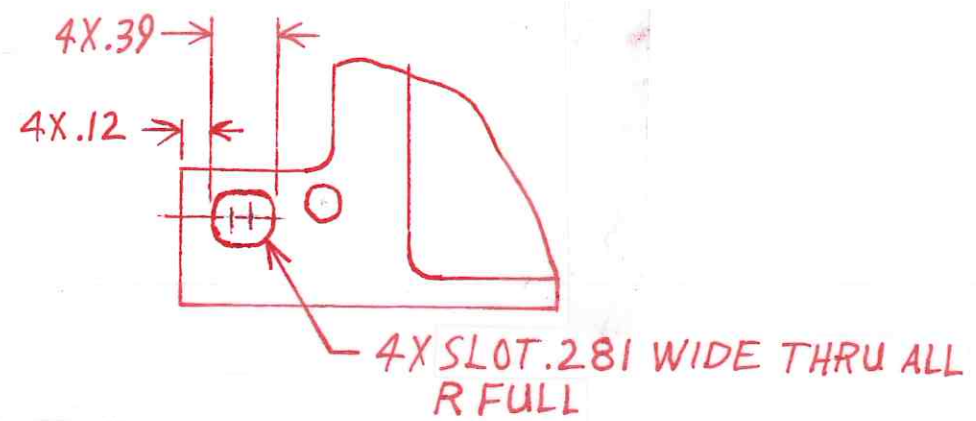
PART NAME: FRONT AND REAR PLATE NOISE TABLECLOTH

REV: D

REV. NO: D0603H

SHEET 1 OF 1

v3



DETAIL E  
DETAIL F OPPOSITE

D060311 v3  
SHEET 2