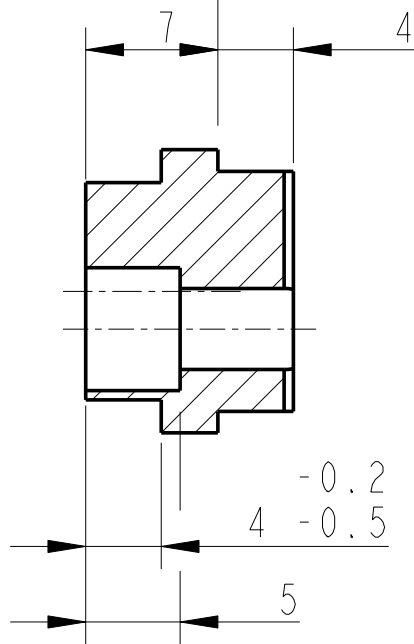
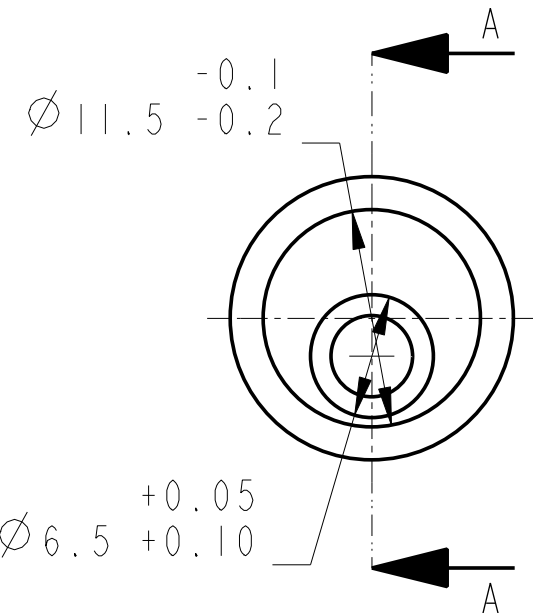
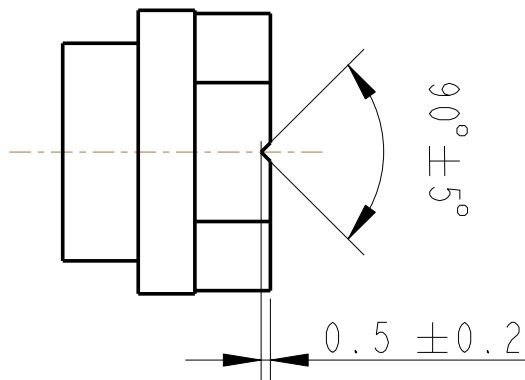
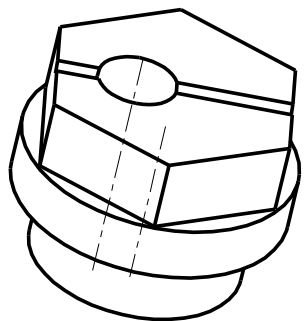
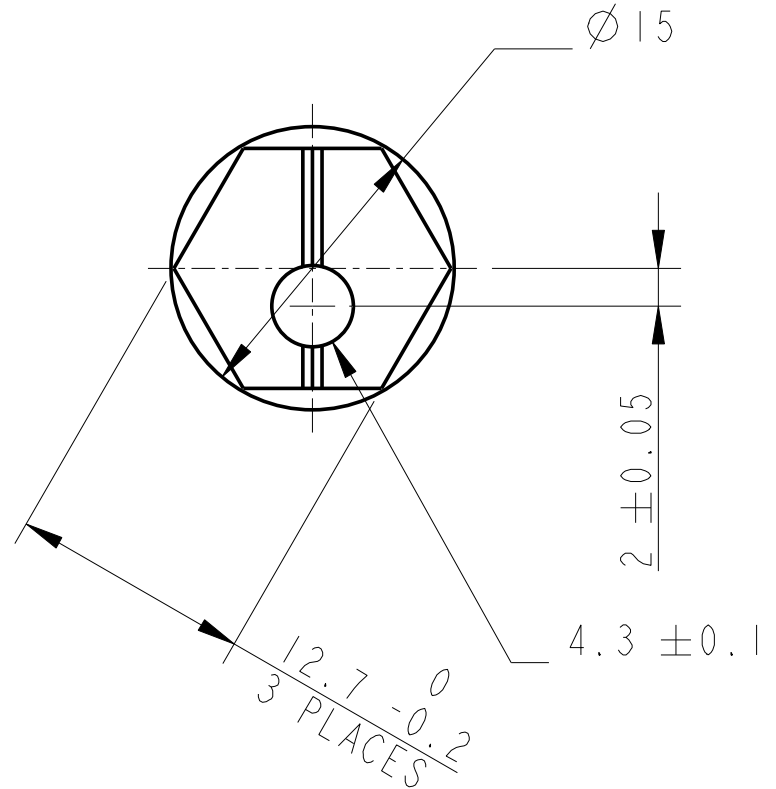


REV.	DATE	DCN #	DRAWING TREE #
A	18/OCT/06	E060247	
B	19/DEC/07	E060247-B	
H	21/JULY/08	E080371	



SECTION A-A



3-D VIEW

NOTES: (UNLESS OTHERWISE SPECIFIED)

- REMOVE ALL SHARP EDGES, R.02 MIN.
- DO NOT SCALE FROM DRAWING.
- ALL MACHINING FLUIDS SHALL BE WATER SOLUBLE AND FREE OF SULFUR, CHLORINE AND SILICONE, SUCH AS CINCINNATI MILACRON'S CIMTECH 410 (STAINLESS STEEL)
- SCRIBE, ENGRAVE OR STAMP DRAWING PART NUMBER ON NOTED SURFACE OF PART AND A THREE DIGIT SERIAL NUMBER. SERIAL NUMBERS START AT 001 FOR THE FIRST PART AND PROCEED CONSECUTIVELY. USE .07" HIGH CHARACTERS. EXAMPLE: D020188- 001. A VIBRATORY TOOL MAY BE USED.

DIMENSIONS ARE IN mm [INCHES] TOLERANCES:

X.XX ± 0.2 mm
ANGULAR ± 0.25 °

MATERIAL: PH BRONZE

FINISH: CLEAN AND DEGREASED
Ra = 1.6
√μm [μin]

	NAME	DATE
DRAWN	I WILMUT	28/OCT/05
CHECKED	AJB	5MAY08
APPROVED	AJB	21/JULY/08



SYSTEM **ADVANCED LIGO**

SUB-SYSTEM **SUS**

NEXT ASSY **PENRE MASS QUAD N-P-TYPE**

PART NAME **2MM CAM
OSEM ADJUSTER**

SIZE **A** DRG. NO. **D060336** REV **H.**

SCALE 5:2 PROJECTION: SHEET 1 OF 1