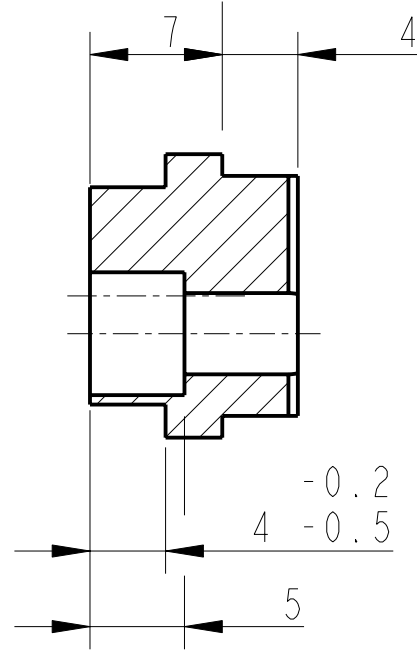
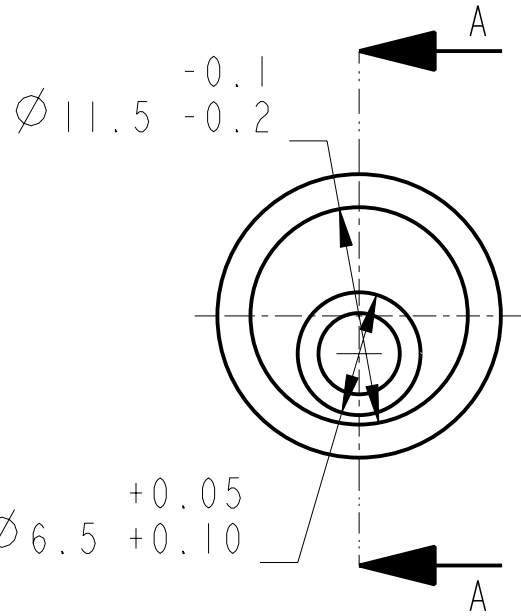
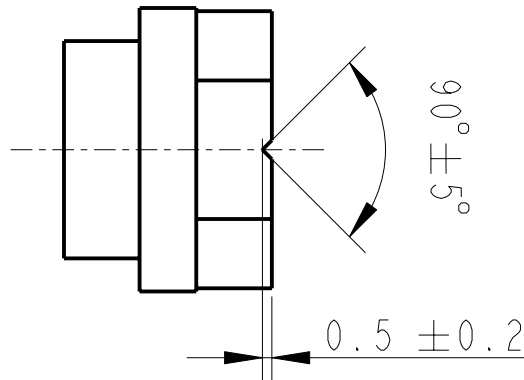
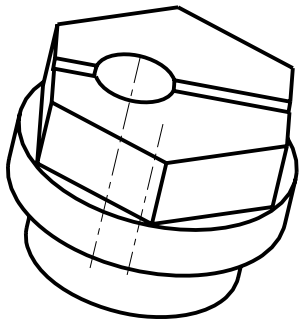
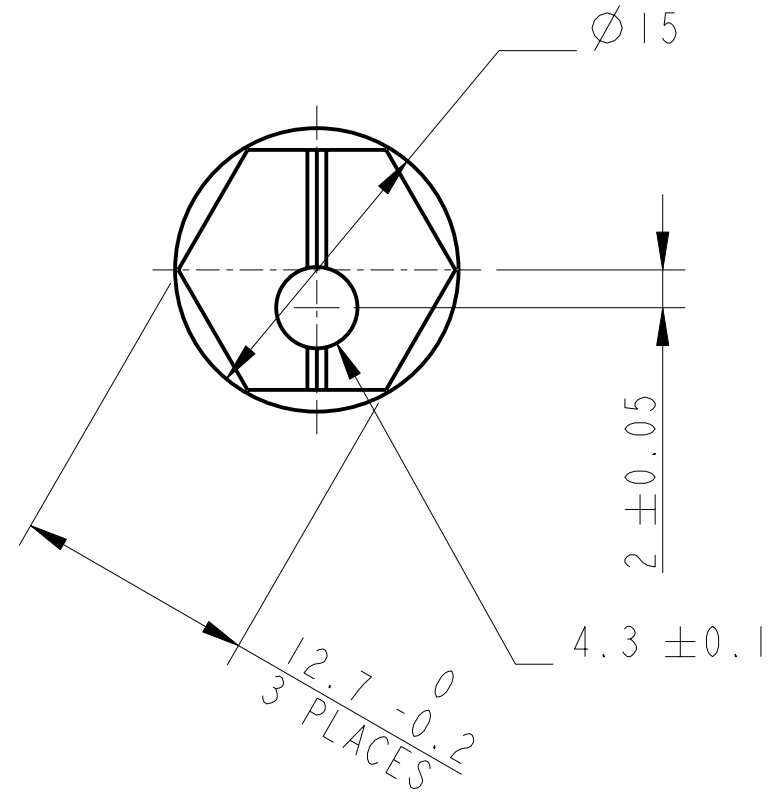


REV.	DATE	DCN #	DRAWING TREE #
A	18/OCT/06	E060247	
B	19/DEC/07	E060247-B	
H	21/JULY/08	E080371	



SECTION A-A



3-D VIEW

NOTES: (UNLESS OTHERWISE SPECIFIED)

- REMOVE ALL SHARP EDGES, R.02 MIN.
- DO NOT SCALE FROM DRAWING.
- ALL MACHINING FLUIDS SHALL BE WATER SOLUBLE AND FREE OF SULFUR, CHLORINE AND SILICONE, SUCH AS CINCINNATI MILACRON'S CIMTECH 410 (STAINLESS STEEL)
- SCRIBE, ENGRAVE OR STAMP DRAWING PARTNUMBER ON NOTED SURFACE OF PART AND A THREE DIGIT SERIAL NUMBER. SERIAL NUMBERS START AT 001 FOR THE FIRST PART AND PROCEED CONSECUTIVELY. USE .07" HIGH CHARACTERS. EXAMPLE: D020188- 001. A VIBRATORY TOOL MAY BE USED.

DIMENSIONS ARE IN mm [INCHES]		
TOLERANCES:		
X.XX ± 0.2 mm		
ANGULAR ± 0.25 °		
MATERIAL: PH BRONZE		
FINISH: CLEAN AND DEGREASED		
Ra = 1.6		
	NAME	DATE
DRAWN	I WILMUT	28/OCT/05
CHECKED	AJB	5MAY08
APPROVED	AJB	21/JULY/08

	CALIFORNIA INSTITUTE OF TECHNOLOGY MASSACHUSETTS INSTITUTE OF TECHNOLOGY 1GR, GLASGOW UNIVERSITY GEO 600 GROUP RUTHERFORD APPLETON LABORATORIES		
	SYSTEM	ADVANCED LIGO	
	SUB-SYSTEM	SUS	
	NEXT ASSY	PENRE MASS QUAD N-P-TYPE	
	PART NAME	2MM CAM OSEM ADJUSTER	
SIZE	DRG. NO.	D060336	REV
A			H.
SCALE 5:2   PROJECTION:    SHEET 1 OF			