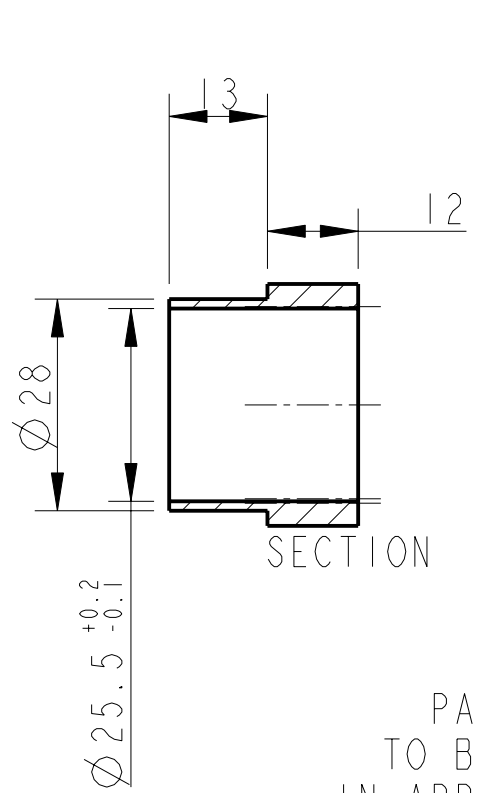
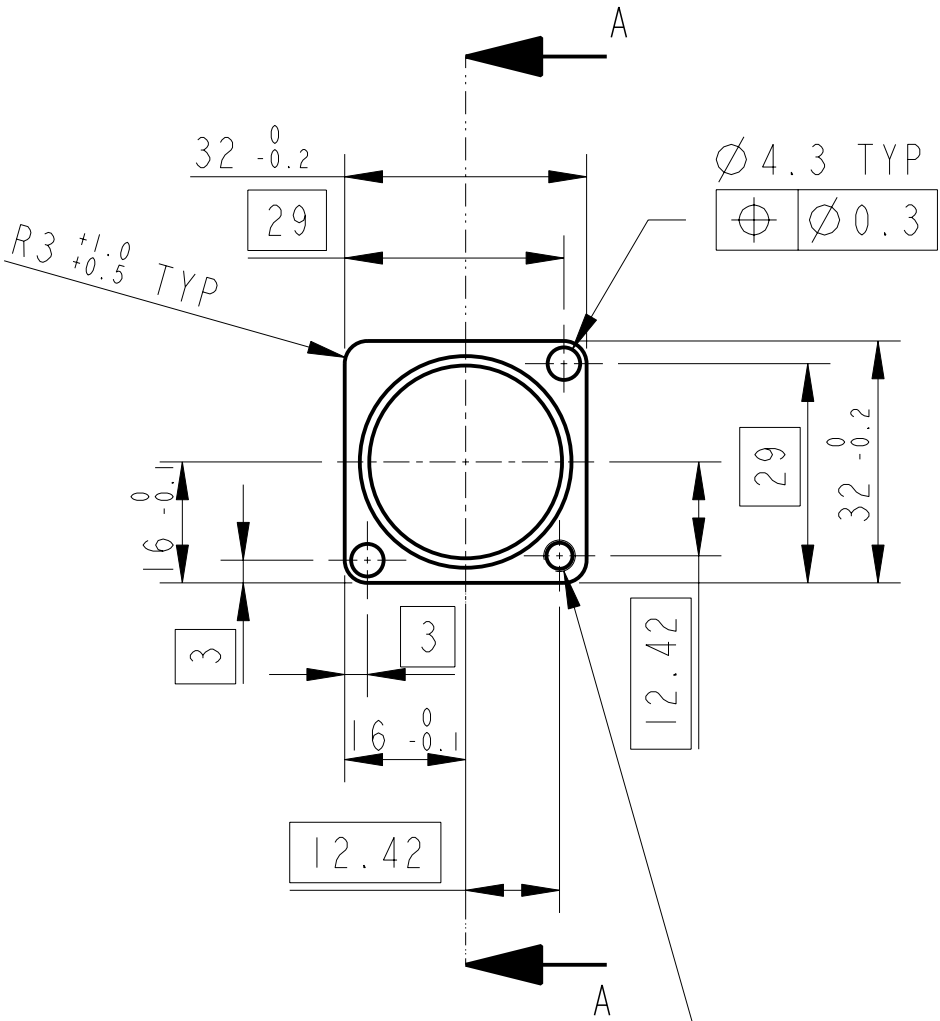
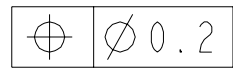


REV.	DATE	DCN #	DRAWING TREE #
A	15/OCT/06	E060240	



PART NO. (SEE NOTE 4)
TO BE ETCHED OR STAMPED
IN APPROX POSITION SHOWN.

HOLE THRO' FOR 8-32
UNC X 1.5D 1g HELICOIL
HELICOIL NOT TO BE FITTED



NOTES: (UNLESS OTHERWISE SPECIFIED)		CALIFORNIA INSTITUTE OF TECHNOLOGY MASSACHUSETTS INSTITUTE OF TECHNOLOGY IGR, GLASGOW UNIVERSITY GEO 600 GROUP RUTHERFORD APPLETON LABORATORIES												
1. REMOVE ALL SHARP EDGES, R.02 MIN. 2. DO NOT SCALE FROM DRAWING. 3. ALL MACHINING FLUIDS SHALL BE WATER SOLUBLE AND FREE OF SULFUR, CHLORINE AND SILICONE, SUCH AS CINCINNATI MILACRON'S CIMTECH 410 (STAINLESS STEEL) 4. SCRIBE, ENGRAVE OR STAMP DRAWING PARTNUMBER ON NOTED SURFACE OF PART AND A THREE DIGIT SERIAL NUMBER. SERIAL NUMBERS START AT 001 FOR THE FIRST PART AND PROCEED CONSECUTIVELY. USE .07" HIGH CHARACTERS. EXAMPLE: D020188- 001. A VIBRATORY TOOL MAY BE USED.	DIMENSIONS ARE IN mm [INCHES] TOLERANCES: X.XX ±0.2 mm ° ANGULAR ±0.25 °		SYSTEM ADVANCED LIGO											
	MATERIAL: AL ALLOY 5083		SUB-SYSTEM SUS											
	FINISH: CLEAN √μm [μin] Ra = 1.6		NEXT ASSY PENRE ETM QUAD N-PTYPE											
	<table border="1"> <thead> <tr> <th></th> <th>NAME</th> <th>DATE</th> </tr> </thead> <tbody> <tr> <td>DRAWN</td> <td>J O'DELL</td> <td>18/SEP/06</td> </tr> <tr> <td>CHECKED</td> <td>IW</td> <td>28/SEP/06</td> </tr> <tr> <td>APPROVED</td> <td>IW</td> <td>28/SEP/06</td> </tr> </tbody> </table>			NAME	DATE	DRAWN	J O'DELL	18/SEP/06	CHECKED	IW	28/SEP/06	APPROVED	IW	28/SEP/06
	NAME	DATE												
DRAWN	J O'DELL	18/SEP/06												
CHECKED	IW	28/SEP/06												
APPROVED	IW	28/SEP/06												
SIZE A DRG. NO. D060351		SCALE 1:1 PROJECTION: SHEET 1 OF 1												