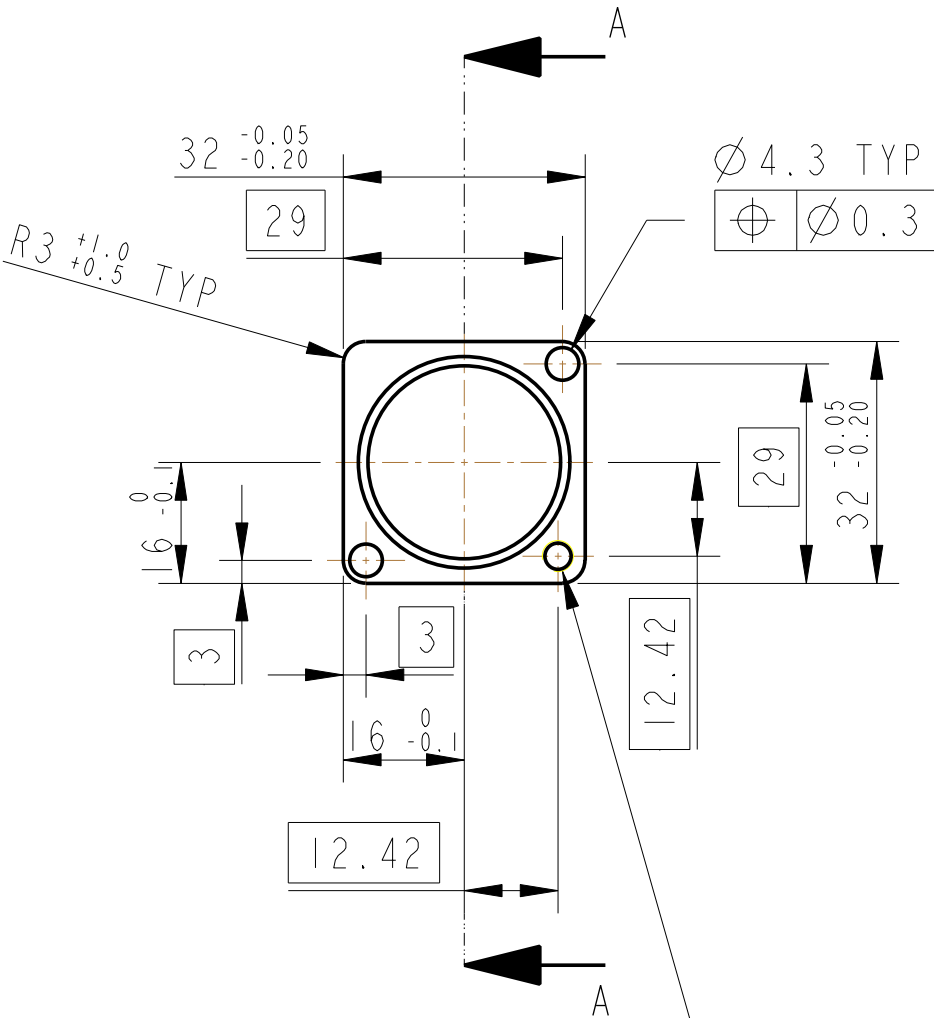
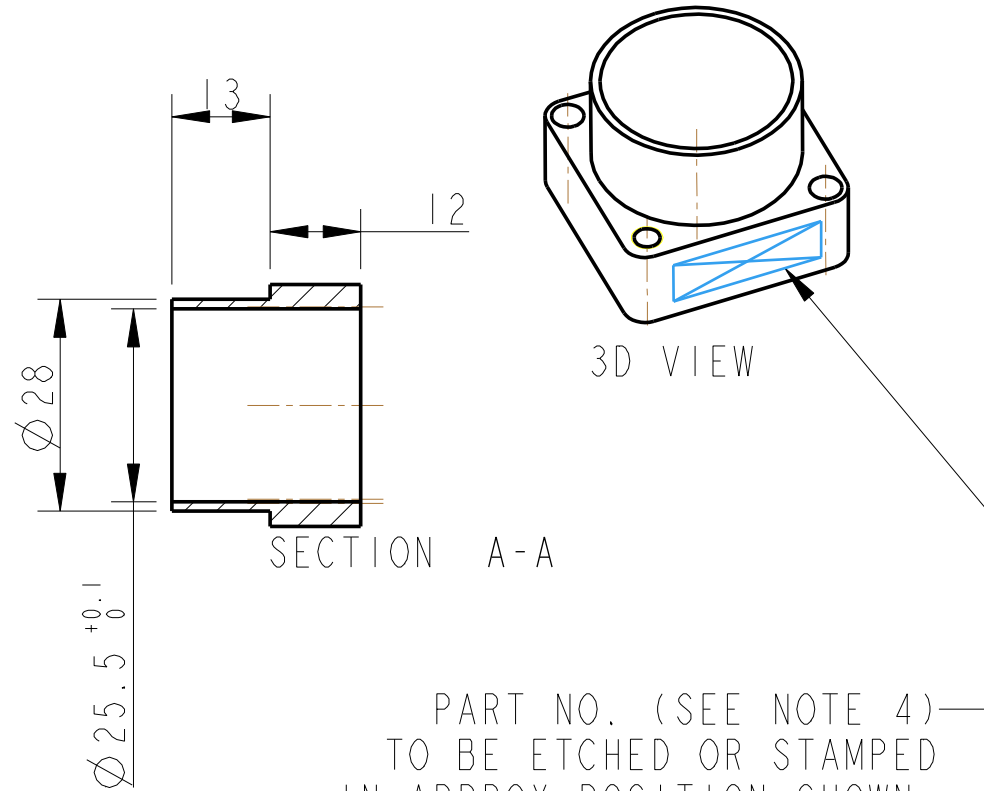
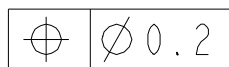


REV.	DATE	DCN #	DRAWING TREE #
A	15/OCT/06	E060240	.
B	20/DEC/07	E060240-B	.



HOLE THRO' FOR 8-32
UNC HELICOIL
HELICOIL NOT TO BE FITTED



PART NO. (SEE NOTE 4)
TO BE ETCHED OR STAMPED
IN APPROX POSITION SHOWN.

NOTES: (UNLESS OTHERWISE SPECIFIED)

- REMOVE ALL SHARP EDGES, R.02 MIN.
- DO NOT SCALE FROM DRAWING.
- ALL MACHINING FLUIDS SHALL BE WATER SOLUBLE AND FREE OF SULFUR, CHLORINE AND SILICONE, SUCH AS CINCINNATI MILACRON'S CIMTECH 410 (STAINLESS STEEL)
- SCRIBE, ENGRAVE OR STAMP DRAWING PARTNUMBER ON NOTED SURFACE OF PART AND A THREE DIGIT SERIAL NUMBER. SERIAL NUMBERS START AT 001 FOR THE FIRST PART AND PROCEED CONSECUTIVELY. USE .07" HIGH CHARACTERS. EXAMPLE: D020188- 001. A VIBRATORY TOOL MAY BE USED.

DIMENSIONS ARE IN mm [INCHES]
TOLERANCES:

X.XX ±0.2 mm
ANGULAR ±0.25 °

MATERIAL: AL ALLOY
5083

FINISH: CLEAN
Ra = 1.6

	NAME	DATE
DRAWN	J O'DELL	18/SEP/06
CHECKED	IW	28/SEP/06
APPROVED	IW	28/SEP/06



SYSTEM	ADVANCED LIGO
SUB-SYSTEM	SUS
NEXT ASSY	PENRE ETM QUAD N-PTYPE
PART NAME	BASE PLATE LIGO 1 OSEM MOUNT

SIZE	A	DRG. NO.	D060351	REV	E.
SCALE 1:1		PROJECTION:		SHEET 1 OF 1	