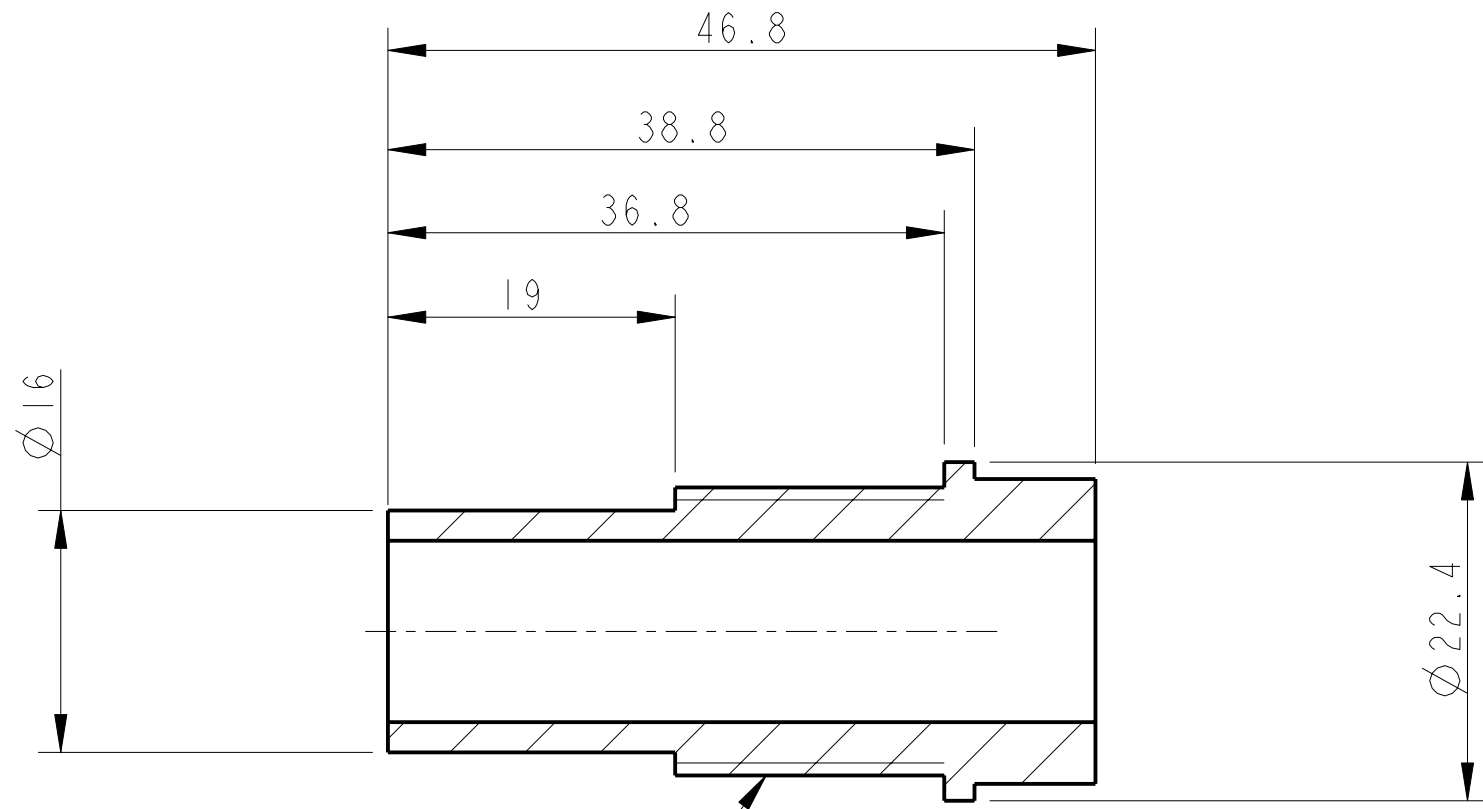
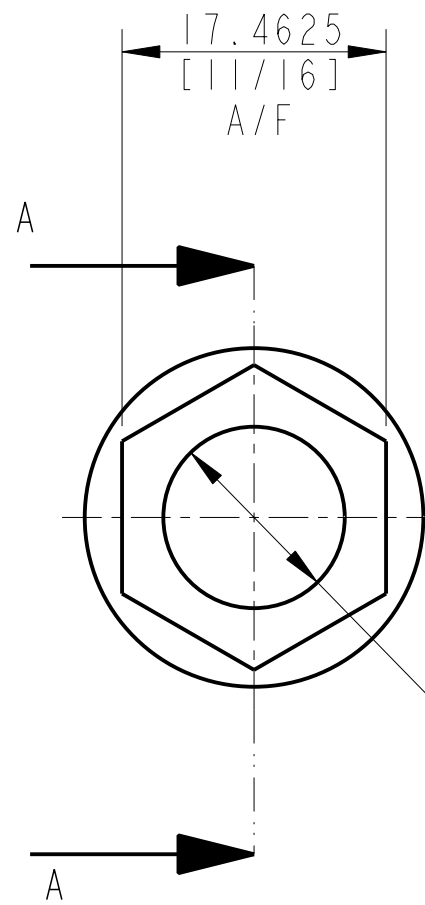


REV.	DATE	DCN #	DRAWING TREE #
A	18/OCT/06	E060247	



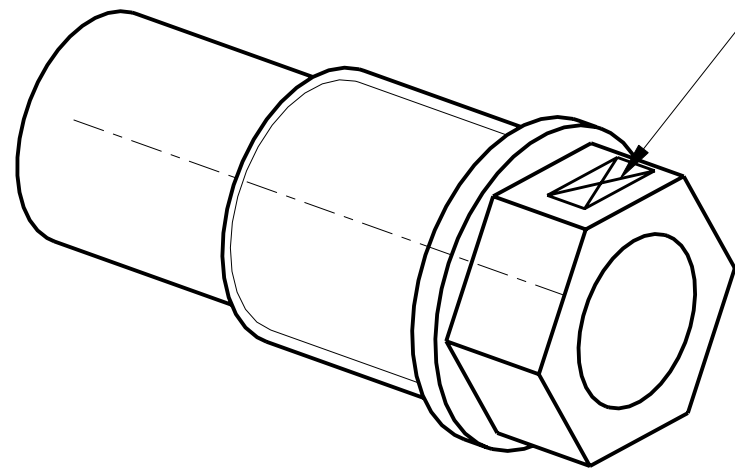
SECTION A-A

3/4-10 UNC THREAD



1-HOLE Ø 12 ^{+0.2}₀
THRU'

PART NO. (SEE NOTE 4) TO BE ETCHED OR STAMPED IN APPROX POSITION SHOWN.



NOTES: (UNLESS OTHERWISE SPECIFIED)		CALIFORNIA INSTITUTE OF TECHNOLOGY MASSACHUSETTS INSTITUTE OF TECHNOLOGY 1GR, GLASGOW UNIVERSITY GEO 600 GROUP RUTHERFORD APPLETON LABORATORIES								
<ol style="list-style-type: none"> REMOVE ALL SHARP EDGES, R.02 MIN. DO NOT SCALE FROM DRAWING. ALL MACHINING FLUIDS SHALL BE WATER SOLUBLE AND FREE OF SULFUR, CHLORINE AND SILICONE, SUCH AS CINCINNATI MILACRON'S CIMTECH 410 (STAINLESS STEEL) SCRIBE, ENGRAVE OR STAMP DRAWING PART NUMBER ON NOTED SURFACE OF PART AND A THREE DIGIT SERIAL NUMBER. SERIAL NUMBERS START AT 001 FOR THE FIRST PART AND PROCEED CONSECUTIVELY. USE .07" HIGH CHARACTERS. EXAMPLE: D020188- 001. A VIBRATORY TOOL MAY BE USED. 	DIMENSIONS ARE IN mm [INCHES] TOLERANCES: X.XX ±0.2 mm ANGULAR ±0.25 °		SYSTEM ADVANCED LIGO							
	MATERIAL: OFHC COPPER		SUB-SYSTEM SUS							
	FINISH: CLEAN & DE-GREASED √μm [μin] Ra = 1.6		NEXT ASSY UI MASS QUAD N-PTYPE							
	<table border="1"> <tr> <th>NAME</th> <th>DATE</th> </tr> <tr> <td>DRAWN FEL</td> <td>15/SEP/06</td> </tr> <tr> <td>CHECKED J'OD</td> <td>27/SEP/06</td> </tr> <tr> <td>APPROVED IW</td> <td>29/SEP/06</td> </tr> </table>		NAME	DATE	DRAWN FEL	15/SEP/06	CHECKED J'OD	27/SEP/06	APPROVED IW	29/SEP/06
NAME	DATE									
DRAWN FEL	15/SEP/06									
CHECKED J'OD	27/SEP/06									
APPROVED IW	29/SEP/06									
<table border="1"> <tr> <td>SIZE B</td> <td>DRG. NO. D060381</td> <td>REV F.</td> </tr> </table>		SIZE B	DRG. NO. D060381	REV F.	SCALE 2:1 PROJECTION: SHEET 1 OF 1					
SIZE B	DRG. NO. D060381	REV F.								