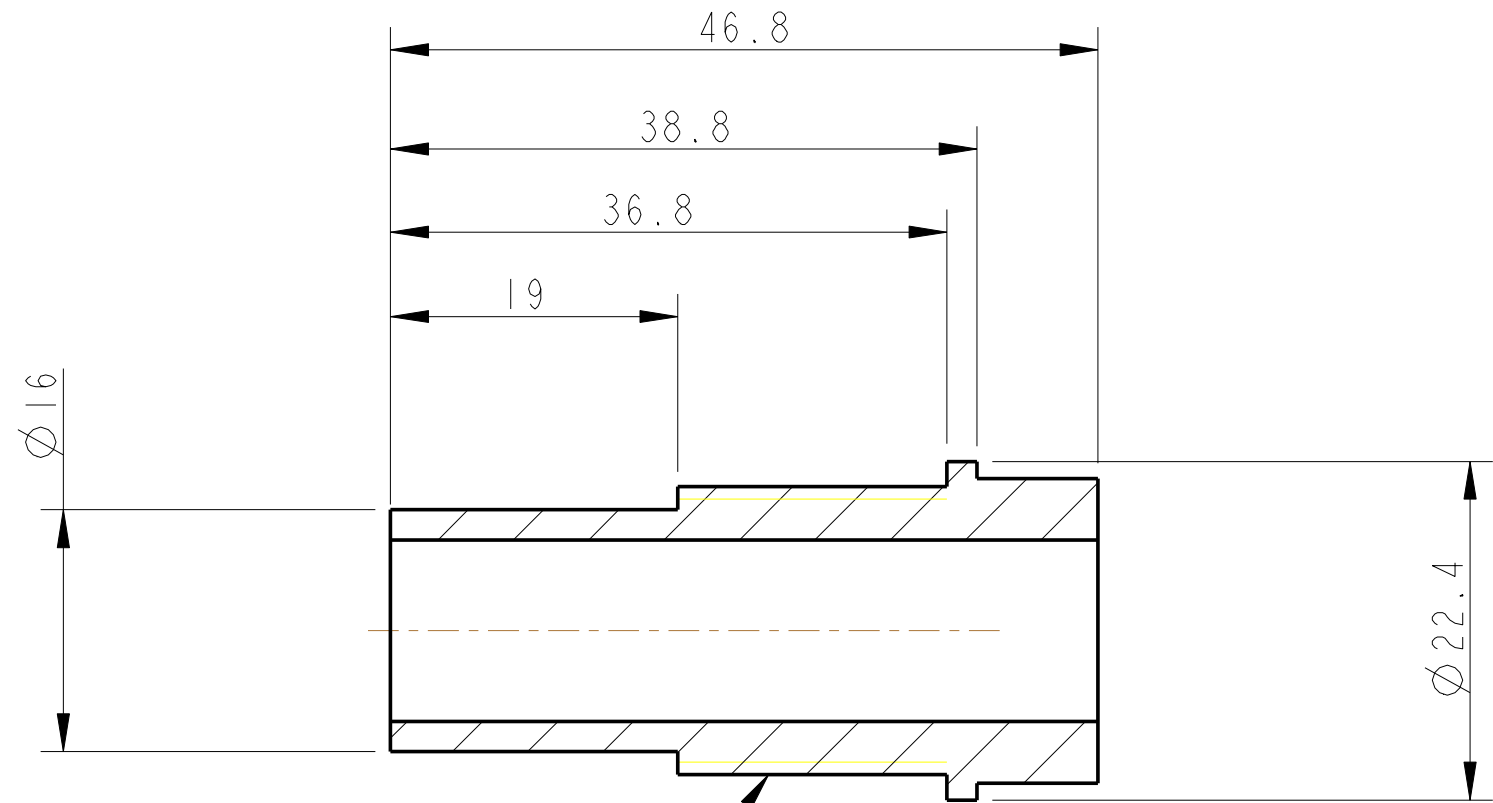
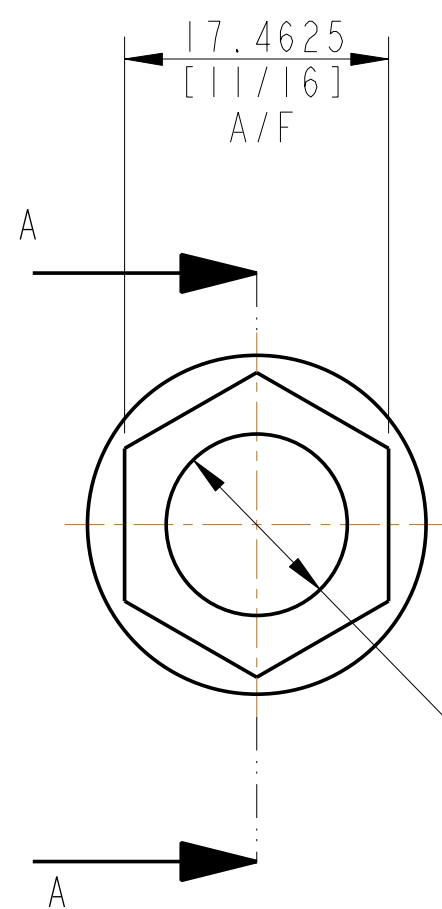


REV.	DATE	DCN #	DRAWING TREE #
A	18/OCT/06	E060247	.
B	19/DEC/07	E060247-B	.

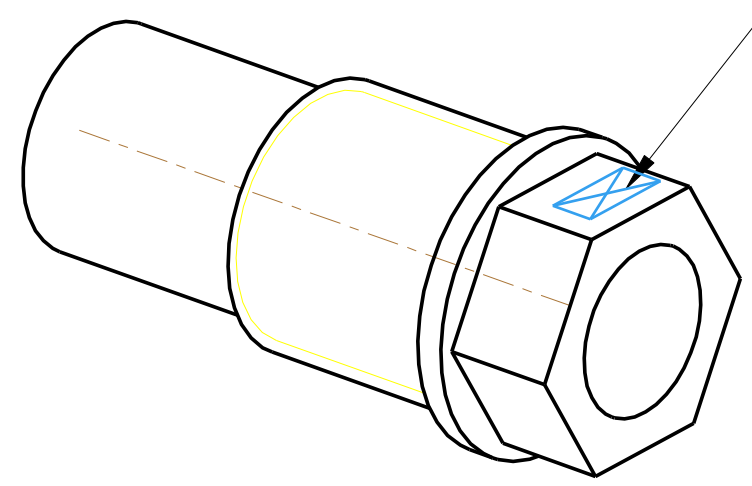


SECTION A-A

3/4-10 UNC THREAD



PART NO. (SEE NOTE 4) TO BE ETCHED OR STAMPED IN APPROX POSITION SHOWN.



NOTES: (UNLESS OTHERWISE SPECIFIED)

- REMOVE ALL SHARP EDGES, R.02 MIN.
- DO NOT SCALE FROM DRAWING.
- ALL MACHINING FLUIDS SHALL BE WATER SOLUBLE AND FREE OF SULFUR, CHLORINE AND SILICONE, SUCH AS CINCINNATI MILACRON'S CIMTECH 410 (STAINLESS STEEL)
- SCRIBE, ENGRAVE OR STAMP DRAWING PARTNUMBER ON NOTED SURFACE OF PART AND A THREE DIGIT SERIAL NUMBER. SERIAL NUMBERS START AT 001 FOR THE FIRST PART AND PROCEED CONSECUTIVELY. USE .07" HIGH CHARACTERS. EXAMPLE: D020188- 001. A VIBRATORY TOOL MAY BE USED.

DIMENSIONS ARE IN mm [INCHES]		
TOLERANCES:		
X.XX ± 0.2 mm		
ANGULAR $\pm 0.25^\circ$		
MATERIAL: OFHC COPPER		
FINISH: CLEAN & DE-GREASED		
$\sqrt{\mu m}$ [μin] Ra = 1.6		
	NAME	DATE
DRAWN	FEL	15/SEP/06
CHECKED	J'OD	27/SEP/06
APPROVED	IW	29/SEP/06

CALIFORNIA INSTITUTE OF TECHNOLOGY MASSACHUSETTS INSTITUTE OF TECHNOLOGY 1GR, GLASGOW UNIVERSITY GEO 600 GROUP RUTHERFORD APPLETON LABORATORIES	
SYSTEM	ADVANCED LIGO
SUB-SYSTEM	SUS
NEXT ASSY	UI MASS QUAD N-PTYPE
PART NAME	UI MASS BLADE ECD
DRG. NO.	D060381
SCALE 2:1	PROJECTION:
SHEET 1	OF 1