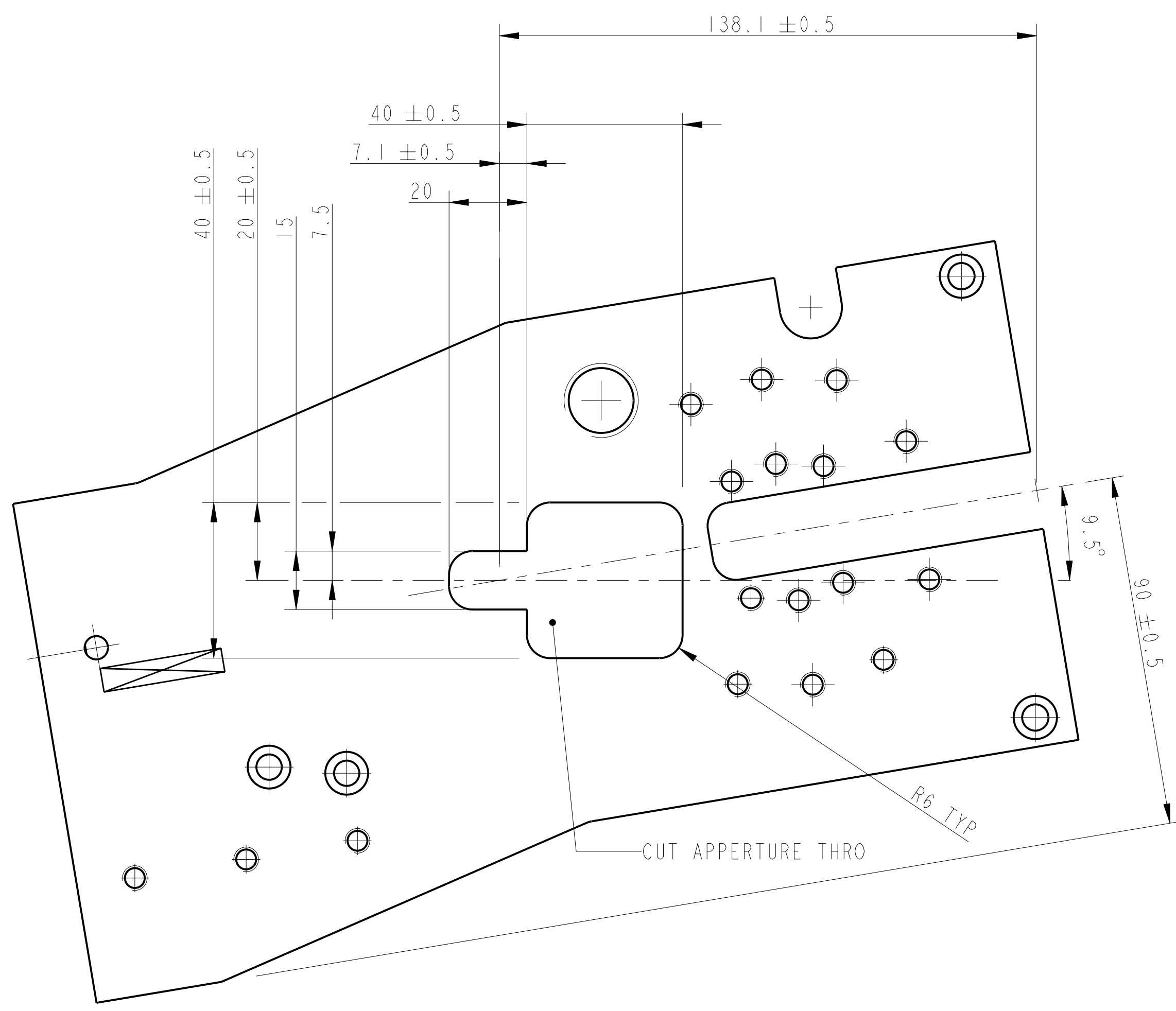
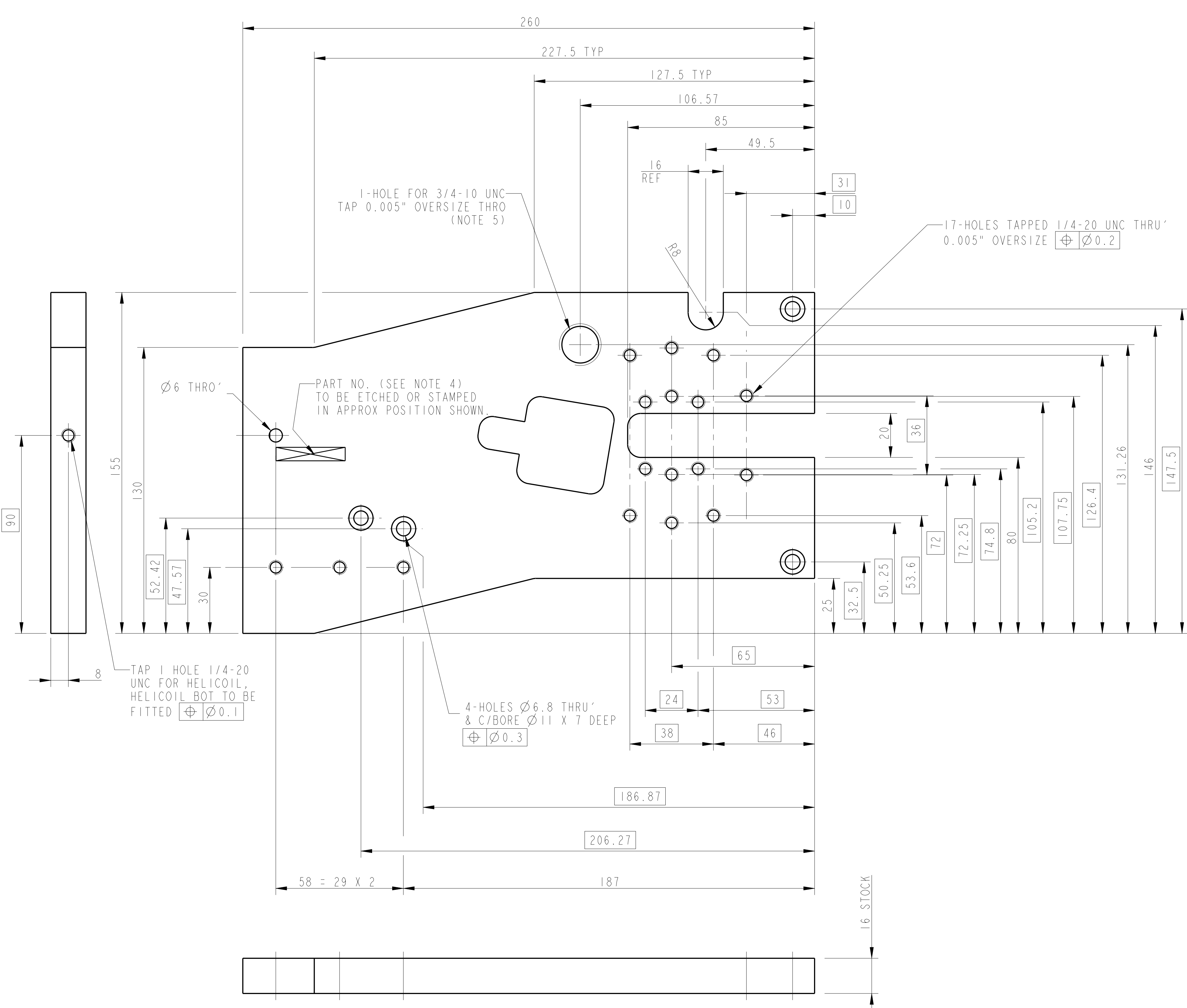


REV.	DATE	DCN #	DRAWING TREE #
A	18/OCT/06	ED60247	
B	19/DEC/07	ED60247-B	
H	21/JULY/08	ED60371	

INTERNAL NAME: 0060382-A



ADDITIONAL NOTES:
 5. OVERSIZE TAPS CAN BE BROUGHT FROM MCMASTER CARR (WWW.MCMASTER.COM) PART NO. 2612A17 OR 2535A14 FOR 1/4-20 UNC

NOTES: (UNLESS OTHERWISE SPECIFIED)		CALIFORNIA INSTITUTE OF TECHNOLOGY MASSACHUSETTS INSTITUTE OF TECHNOLOGY RUTHERFORD APPLIION LABORATORIES	
1. REMOVE ALL SHARP EDGES. R0.2 MIN.	2. DO NOT SCALE FROM DRAWING.	DIMENSIONS ARE IN mm (INCHES) TOLERANCES: X XX ±0.2 (11 ANGULAR ±0.25°	SYSTEM ADVANCED LIGO
3. ALL MACHINING FLUIDS SHALL BE WATER SOLUBLE AND FREE OF SULFUR, CHLORINE AND SILICONE, SUCH AS CINCINNATI MILACRON'S CIMTECH 410 (STAINLESS STEEL)	4. SCRIBE, ENGRAVE OR STAMP DRAWING PART NUMBER ON NOTED SURFACE OF PART AND A THREE DIGIT SERIAL NUMBER. SERIAL NUMBERS START AT 001 FOR THE FIRST PART AND PROCEED CONSECUTIVELY. USE 07* HIGH CHARACTERS. EXAMPLE: 000100-001 - A VIBRATOR TOOL MAY BE USED.	MATERIAL: ST-STEEL 304/316 FINISH: CLEAN AND DEGREASED √μm (1μm) Ra = 1.6	SUB-SYSTEM SUS
		NAME DATE DRAWN CHECKED APPROVED	NEXT ASSY QUAD N-PTYPE UI MASS
		DATE 1/15/2008 10/JUN/08 21/JULY/08	PART NAME UI MASS TOP PLATE
		SCALE: 1:1 PROJECTION:	DRG. NO. D060382
			SHEET 1 OF 1