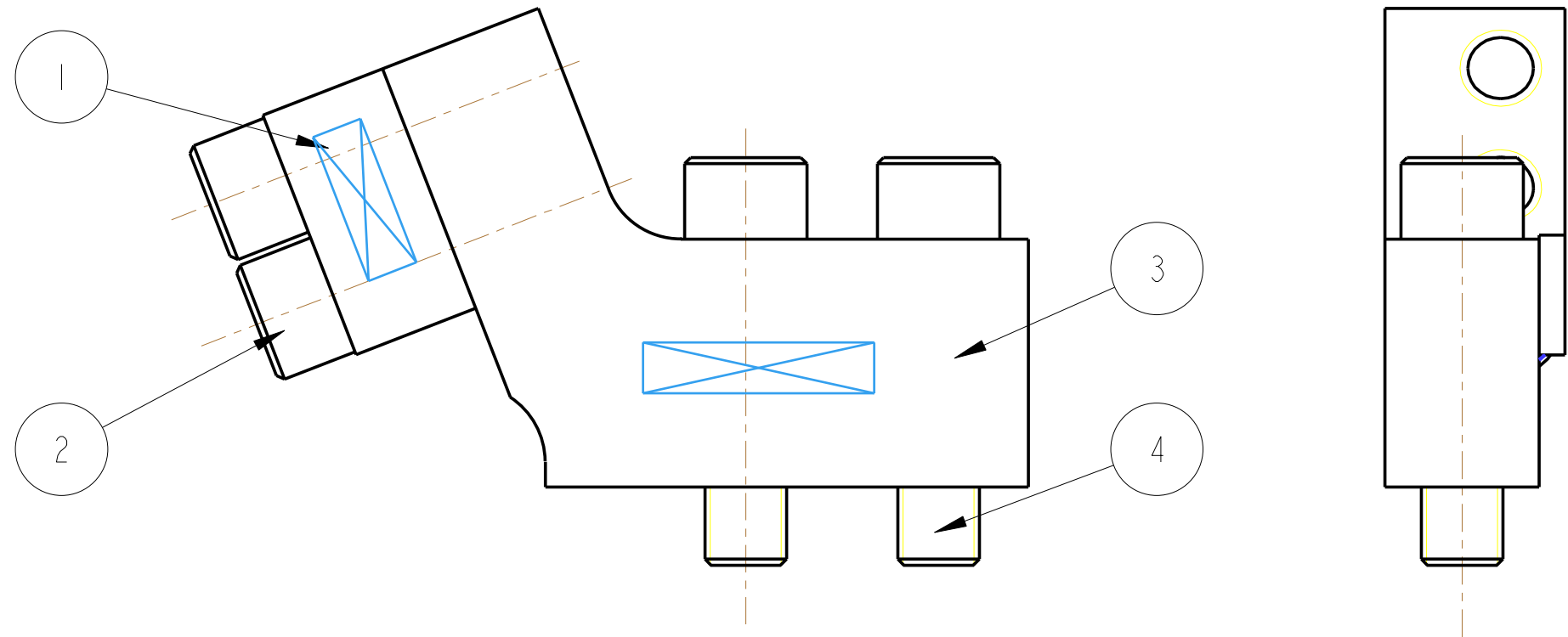


REV.	DATE	DCN #	DRAWING TREE #
A	19/OCT/06.	E060248	.
B	17/DEC/07	E060248-B	.
H	15/JULY/08	E080368	.



ITEM	QTY	SPARE	TOTAL	PART NUMBER	DESCRIPTION	MATERIALS
1	1			D060334	WIRE CLAMP JAW; ALL MASSES	ST STEEL: 304/316
2	2			D060335	RECESSED 1/4" 20 UNC; X 0.75" CAP HEAD	ST STEEL: 304/316
3	1			D060390	WIRE CLAMP BODY; MIDDLE WIRE	ST STEEL: 304/316
4	2				1/4" 20 UNC X 1" CAP HEAD; .	ST STEEL 316. SILVER PLATED

PARTS LIST

NOTES: (UNLESS OTHERWISE SPECIFIED)

- REMOVE ALL SHARP EDGES, R.02 MIN.
- DO NOT SCALE FROM DRAWING.
- ALL MACHINING FLUIDS SHALL BE WATER SOLUBLE AND FREE OF SULFUR, CHLORINE AND SILICONE, SUCH AS CINCINNATI MILACRON'S CIMTECH 410 (STAINLESS STEEL)
- SCRIBE, ENGRAVE OR STAMP DRAWING PARTNUMBER ON NOTED SURFACE OF PART AND A THREE DIGIT SERIAL NUMBER. SERIAL NUMBERS START AT 001 FOR THE FIRST PART AND PROCEED CONSECUTIVELY. USE .07" HIGH CHARACTERS. EXAMPLE: D020188- 001. A VIBRATORY TOOL MAY BE USED.

DIMENSIONS ARE IN mm [INCHES]

TOLERANCES:
 X.XX ± mm °
 ANGULAR ± °

MATERIAL: SEE ITEMS LIST

FINISH: CLEAN
 Ra = --

	NAME	DATE
DRAWN	NJS/FEL	10/AUG/06
CHECKED	AJB	5MAY08
APPROVED	AJB	15/JULY/08

SCALE 2:1 | PROJECTION: | SHEET 1 OF 1

CALIFORNIA INSTITUTE OF TECHNOLOGY
 MASSACHUSETTS INSTITUTE OF TECHNOLOGY
 1GR, GLASGOW UNIVERSITY GEO 600 GROUP
 RUTHERFORD APPLETON LABORATORIES

SYSTEM **ADVANCED LIGO**
 SUB-SYSTEM **SUS**
 NEXT ASSY **QUAD N-P-TYPE TOP MASS**
 PART NAME **TOP WIRE CLAMP (TOP MASS)**

STZE	DRG. NO.	REV
B	D060391	H.