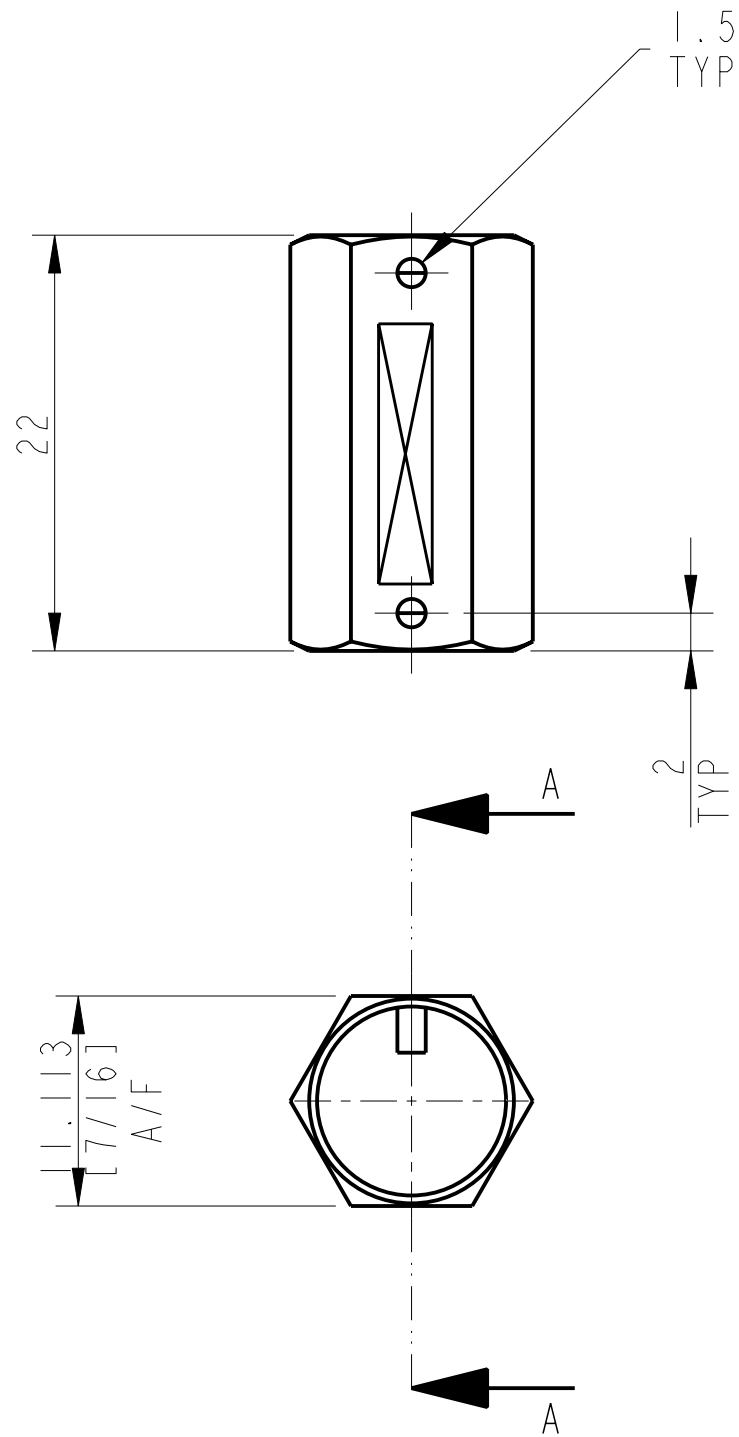
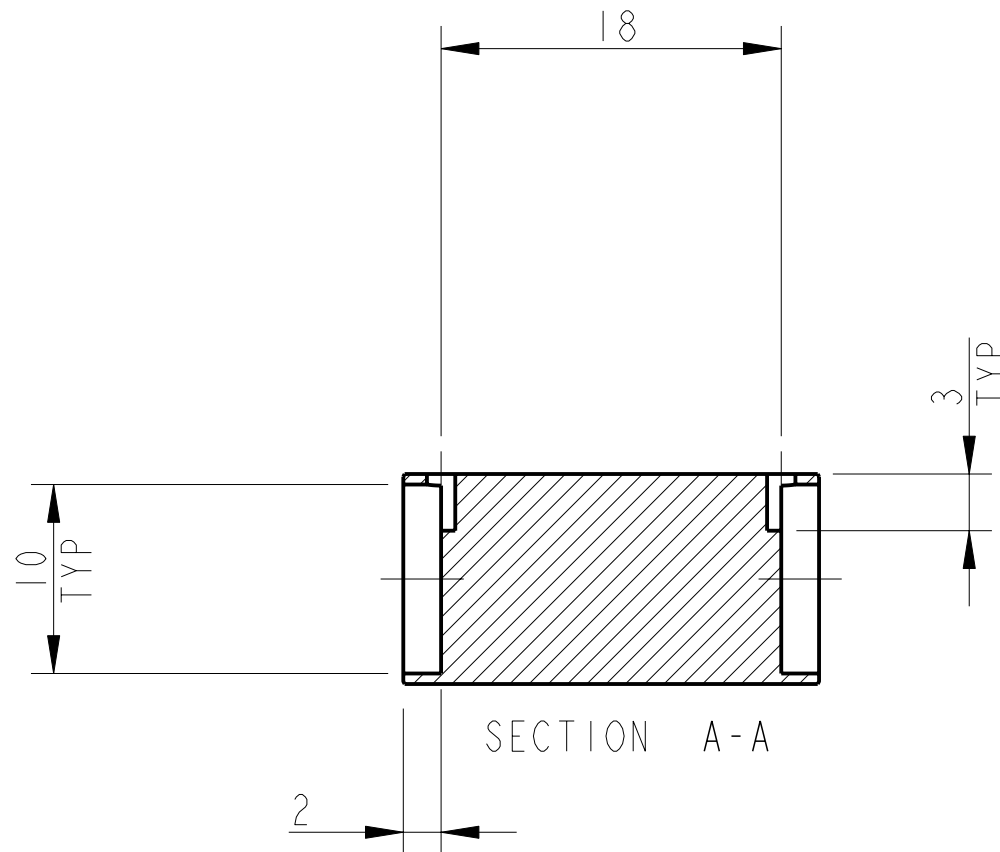
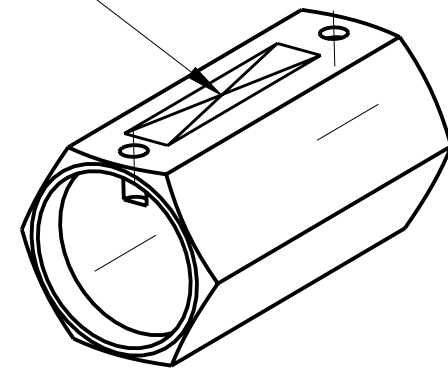


REV.	DATE	DCN #	DRAWING TREE #
A	18/OCT/06	E060247	



PART NO. (SEE NOTE 4) TO BE ETCHED OR STAMPED IN APPROX POSITION SHOWN.



NOTES: (UNLESS OTHERWISE SPECIFIED)

- REMOVE ALL SHARP EDGES, R.02 MIN.
- DO NOT SCALE FROM DRAWING.
- ALL MACHINING FLUIDS SHALL BE WATER SOLUBLE AND FREE OF SULFUR, CHLORINE AND SILICONE, SUCH AS CINCINNATI MILACRON'S CIMTECH 410 (STAINLESS STEEL)
- SCRIBE, ENGRAVE OR STAMP DRAWING PART NUMBER ON NOTED SURFACE OF PART AND A THREE DIGIT SERIAL NUMBER. SERIAL NUMBERS START AT 001 FOR THE FIRST PART AND PROCEED CONSECUTIVELY. USE .07" HIGH CHARACTERS. EXAMPLE: D020188- 001. A VIBRATORY TOOL MAY BE USED.

DIMENSIONS ARE IN mm [INCHES]
TOLERANCES:
X.XX ±0.2 mm
ANGULAR ±0.25 °

MATERIAL: AL ALLOY 5082 OR 6061
FINISH: CLEAN & DE-GREASED
√μm [μin] Ra = 1.6

NAME	DATE
DRAWN NJS/FEL	15/09/06
CHECKED IW	17/OCT/06
APPROVED IW	20/OCT/06

SYSTEM **ADVANCED LIGO**
SUB-SYSTEM **SUS**
NEXT ASSY **QUAD N-PTYPE UI MASS**
PART NAME **SPACER**
UI MASS MAGNET AND FLAG

SIZE **B** DRG. NO. **D060394** REV **F.**
SCALE 5:2 PROJECTION: SHEET 1 OF 1