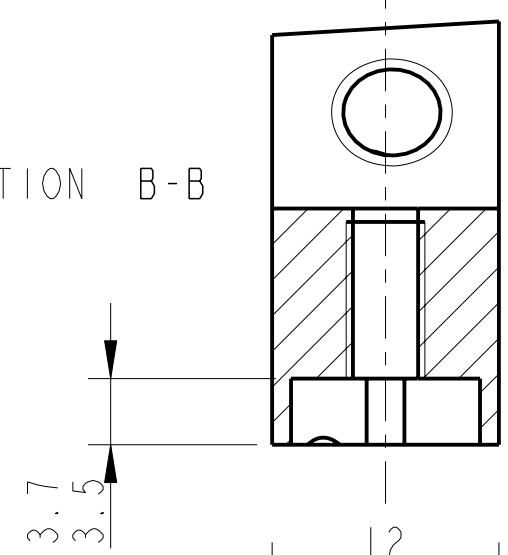


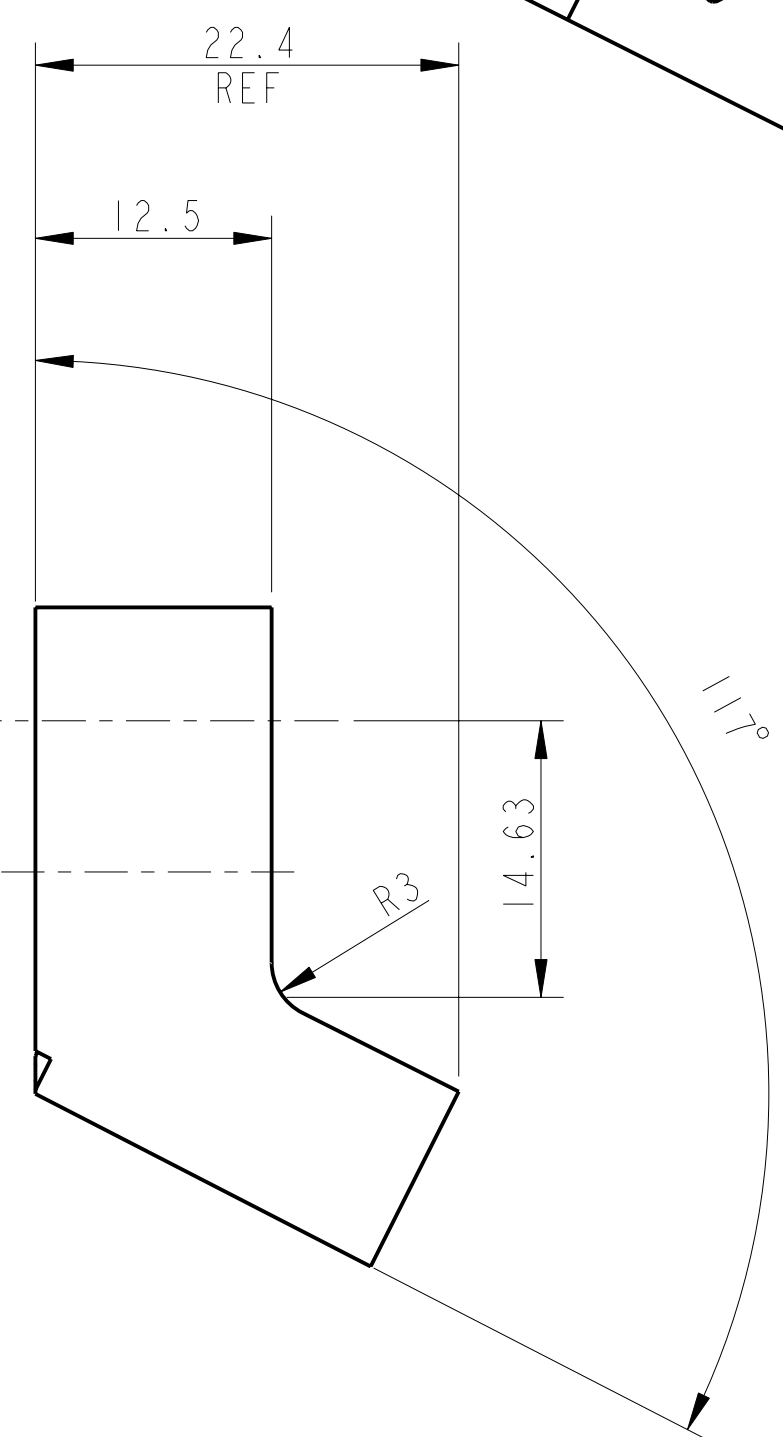
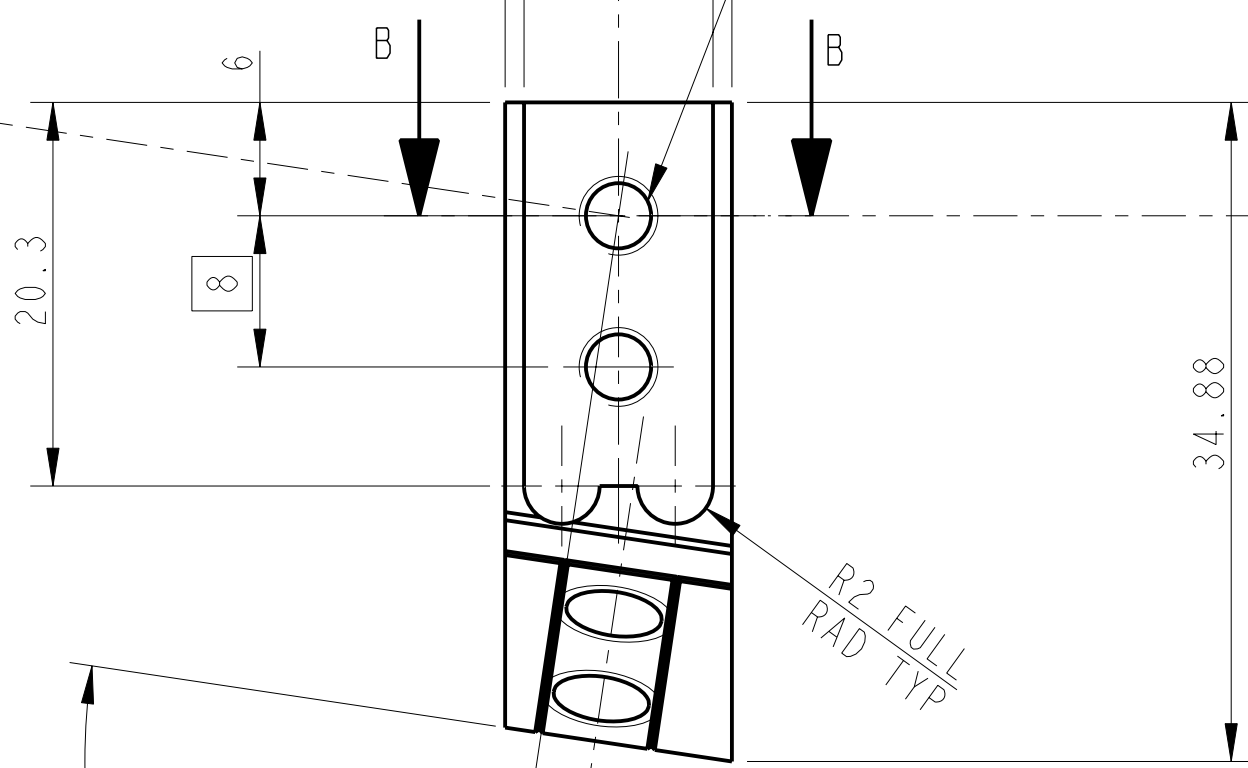
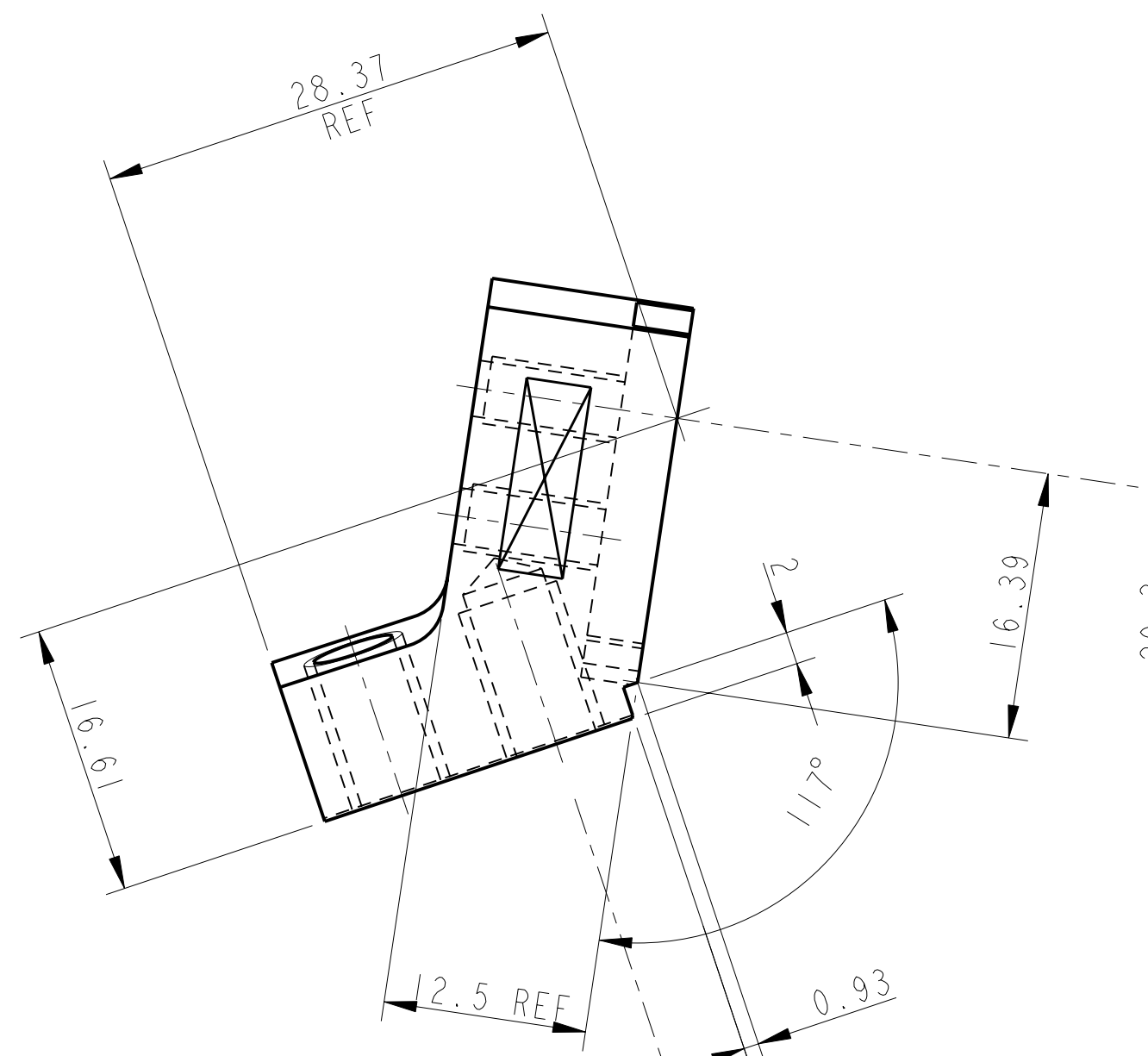
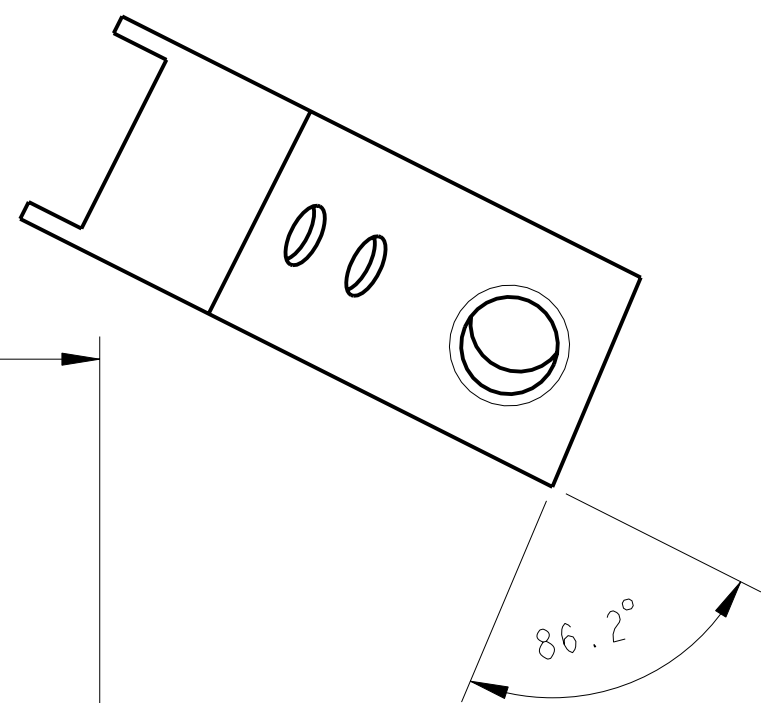
REV.	DATE	DCN #	DRAWING TREE #
A	19/OCT/06.	E060248	
B	17/DEC/07	E060248-B	
H	15/JULY/08	E080368	

SECTION B-B

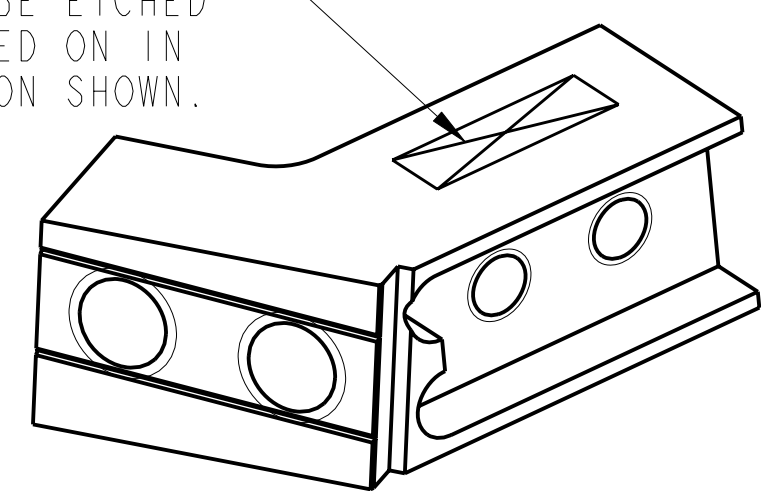


2-HOLES FOR 8-32 UNC X 1.5 D lg HELICOILS. HELICOILS NOT TO BE FITTED.

$\varnothing \varnothing 0.2$



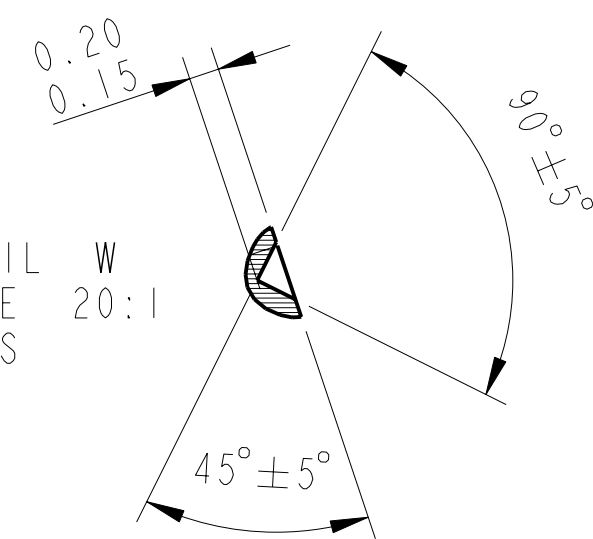
PART NO. (SEE NOTE 4) NUMBER TO BE ETCHED OR STAMPED ON IN APPROX POSITION SHOWN.



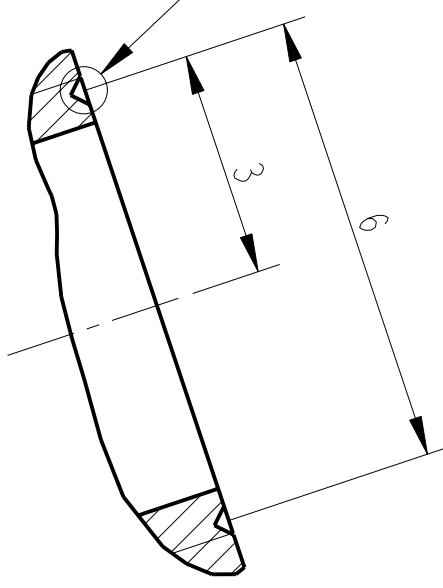
2-HOLES DRILL FOR 1/4-20 UNC X 1.5 D lg HELICOILS. HELICOILS NOT TO BE FITTED.

$\varnothing \varnothing 0.2$

DETAIL SCALE 20:1



SEE DETAIL W



SECTION D-D SCALE 10:1

NOTES: (UNLESS OTHERWISE SPECIFIED)		DIMENSIONS ARE IN mm (INCHES)		TOLERANCES:	
1.	REMOVE ALL SHARP EDGES, R.02 MIN.	X.XX ± 0.25 mm		ANGULAR ± 0.25°	
2.	DO NOT SCALE FROM DRAWING.	MATERIAL: ST STEEL 304/316		FINISH: CLEAN, GREASE FREE	Ro = 1.6
3.	ALL MACHINING FLUIDS SHALL BE WATER SOLUBLE AND FREE OF SULFUR, CHLORINE AND SILICONE, SUCH AS CINCINNATI MILACRON'S CIMTECH 410 (STAINLESS STEEL)	DRAWN: NJS/FEL 11/JULY/06	NAME: DATE	CHECKED: AJB 5MAY08	APPROVED: AJB 15/JULY/08
4.	SCRIBE, ENGRAVE OR STAMP DRAWING PART NUMBER ON NOTED SURFACE OF PART AND A THREE DIGIT SERIAL NUMBER. SERIAL NUMBERS START AT 001 FOR THE FIRST PART AND PROCEED CONSECUTIVELY. USE .07" HIGH CHARACTERS. EXAMPLE: D020188-001. A VIBRATORY TOOL MAY BE USED.	SCALE: 5:2	PROJECTION:	CALIFORNIA INSTITUTE OF TECHNOLOGY MASSACHUSETTS INSTITUTE OF TECHNOLOGY IGR, GLASGOW UNIVERSITY GEO 600 GROUP RUTHERFORD APPLETON LABORATORIES	
		SYSTEM: ADVANCED LIGO		SUB-SYSTEM: SUS	
		NEXT ASSY: QUAD N-PTYPE TOP MASS		PART NAME: WIRE CLAMP BODY (TOP MASS WIRE CLAMP)	
		DRG. NO. D060395		REV. H.	
		SCALE: 5:2		PROJECTION: 1 OF 1	