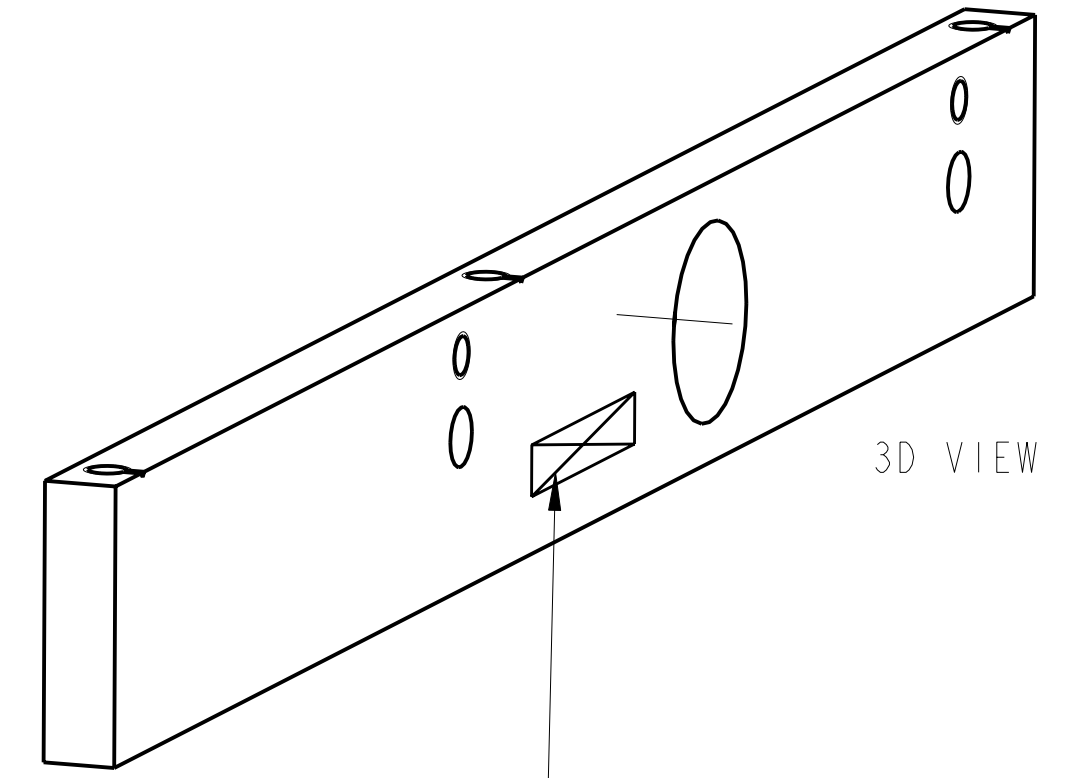
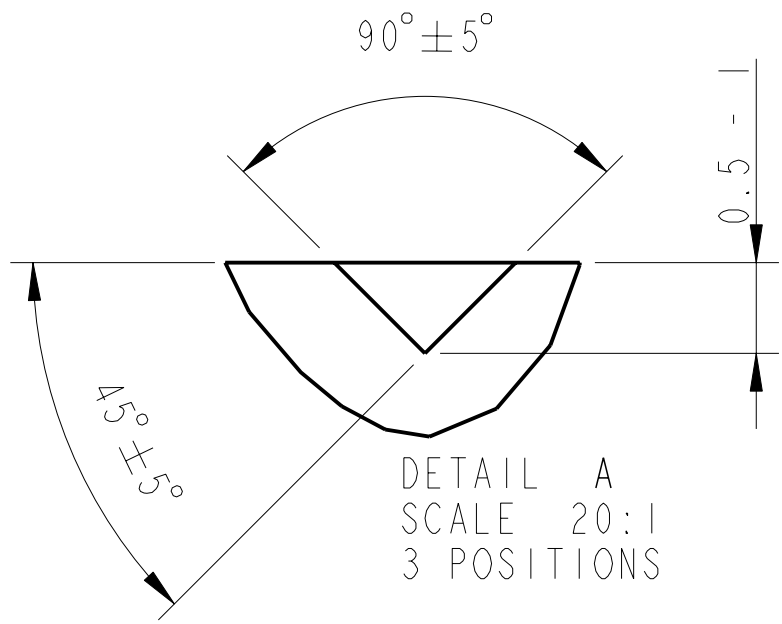
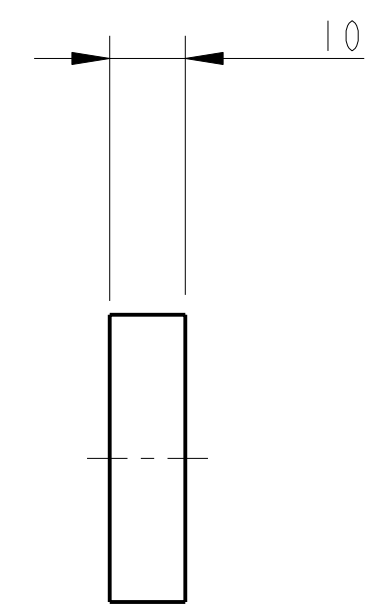
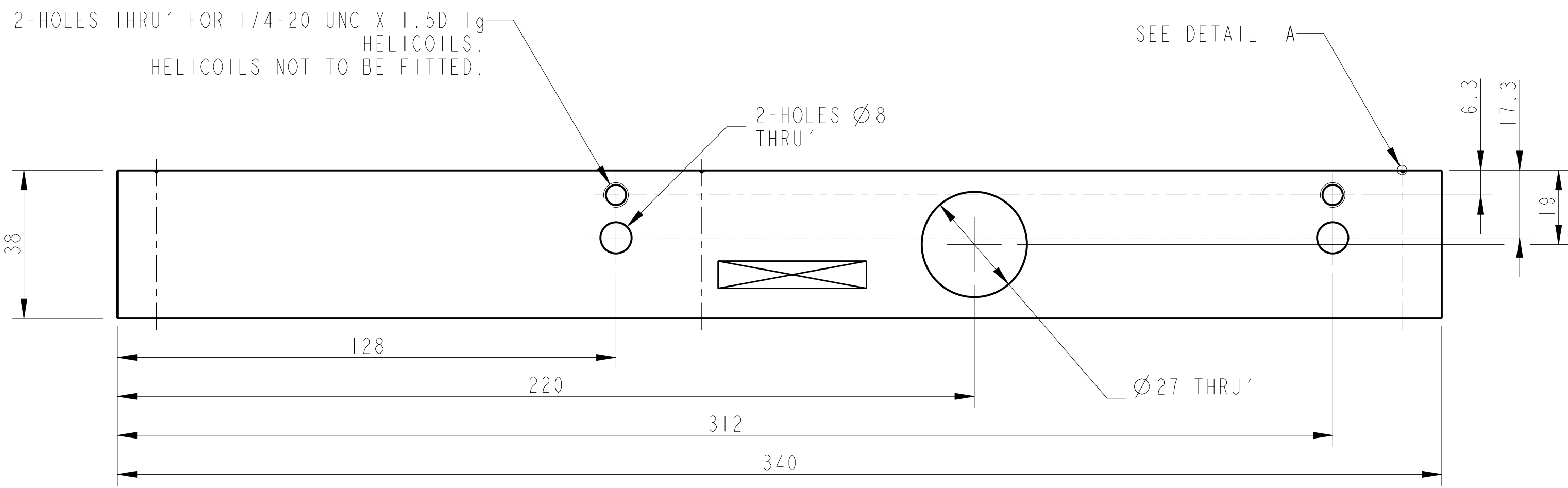
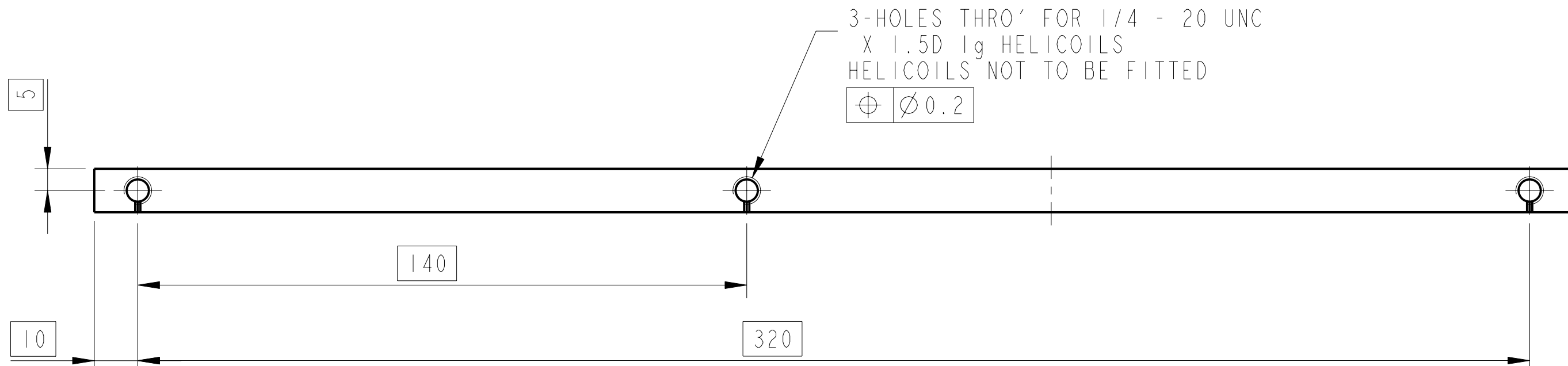


REV.	DATE	DCN #	DRAWING TREE #
A	9/OCT/06	E060248	



PART NO. (SEE NOTE 4) TO BE ETCHED OR STAMPED IN APPROX POSITION SHOWN.



NOTES: (UNLESS OTHERWISE SPECIFIED)

- REMOVE ALL SHARP EDGES, R.02 MIN.
- DO NOT SCALE FROM DRAWING.
- ALL MACHINING FLUIDS SHALL BE WATER SOLUBLE AND FREE OF SULFUR, CHLORINE AND SILICONE, SUCH AS CINCINNATI MILACRON'S CIMTECH 410 (STAINLESS STEEL)
- SCRIBE, ENGRAVE OR STAMP DRAWING PART NUMBER ON NOTED SURFACE OF PART AND A THREE DIGIT SERIAL NUMBER. SERIAL NUMBERS START AT 001 FOR THE FIRST PART AND PROCEED CONSECUTIVELY. USE .07" HIGH CHARACTERS. EXAMPLE: D020188-001. A VIBRATORY TOOL MAY BE USED.

DIMENSIONS ARE IN mm (INCHES)
TOLERANCES:
X.XX ± 0.2mm (INCHES)
ANGULAR ± 0.2°

MATERIAL: AL ALLOY 5083

FINISH: CLEAN, GREASE FREE
Ra = 1.6

DRAWN	J O'DELL	10/OCT/06
CHECKED	IW	20/OCT/06
APPROVED	IW	20/OCT/06

SCALE 1:1 PROJECTION

CALIFORNIA INSTITUTE OF TECHNOLOGY GLASGOW UNIVERSITY GEO 600 GROUP RUTHERFORD APPLETON LABORATORIES	
SYSTEM	ADVANCED LIGO
SUB-SYSTEM	SUS
NEXT ASSY	QUAD N-PTYPE TOP MASS
PART NAME	BASE PLATE STIFFENER
DRG. NO.	D060406

REV. F. SHEET 1 OF 1