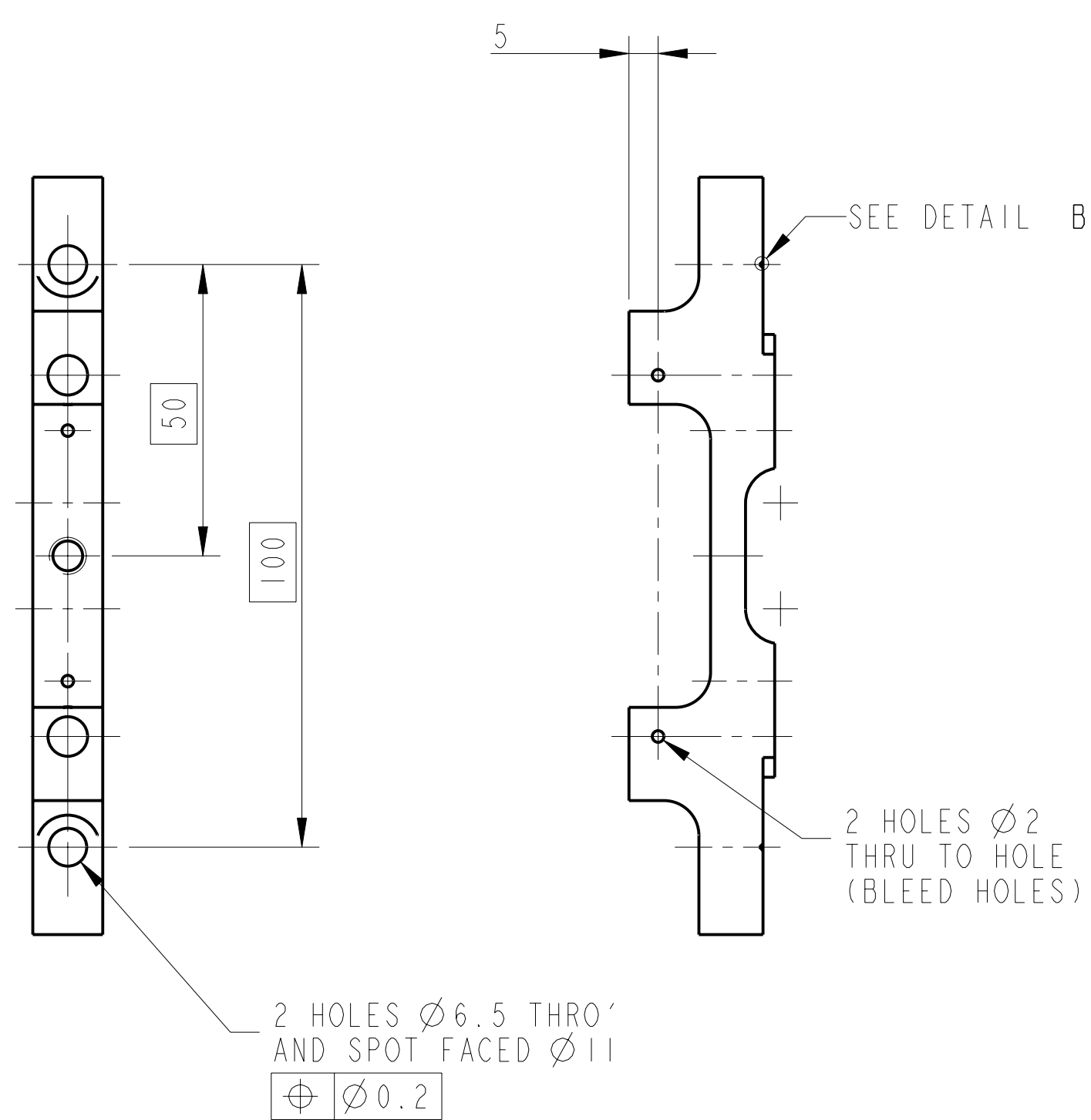
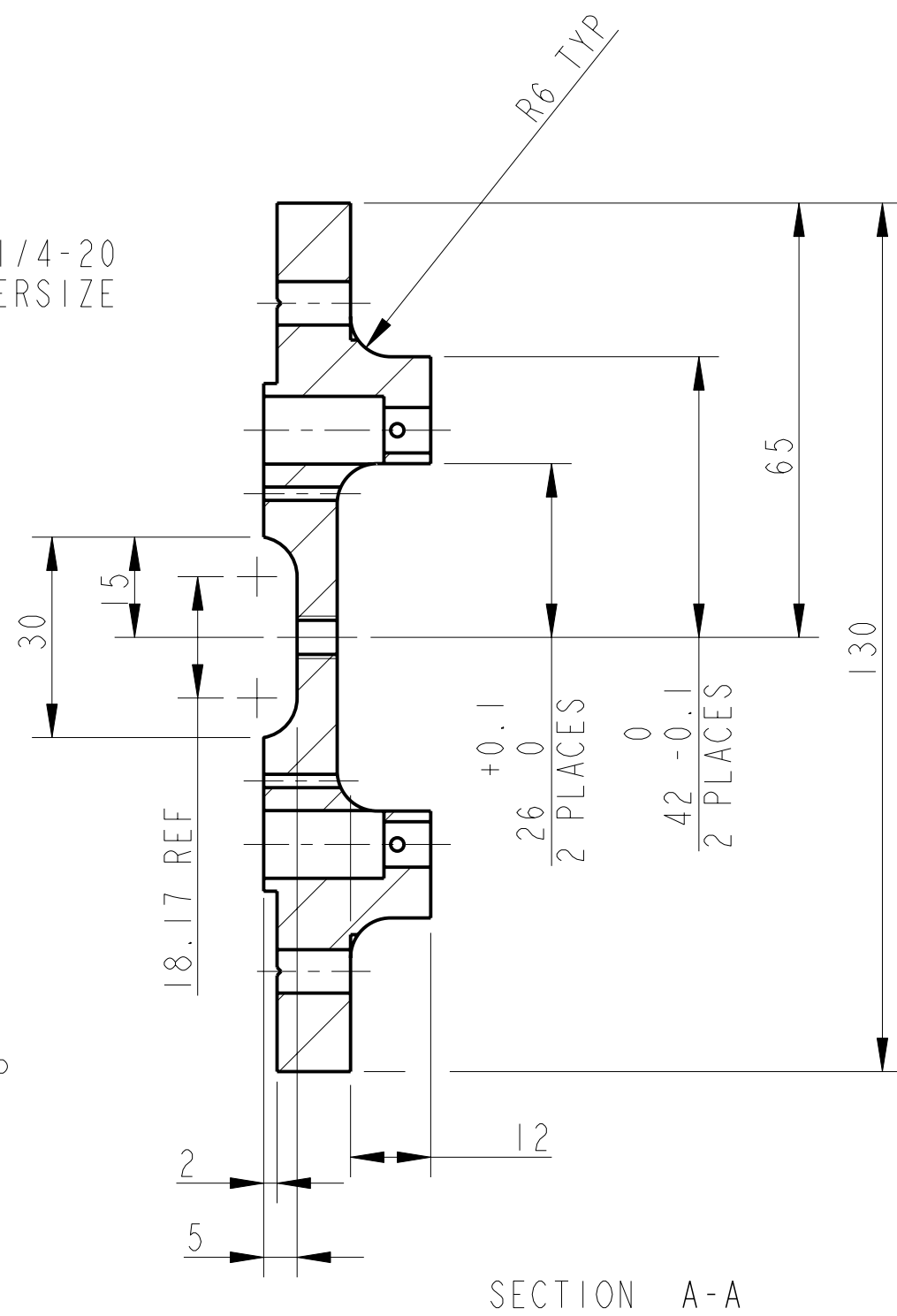
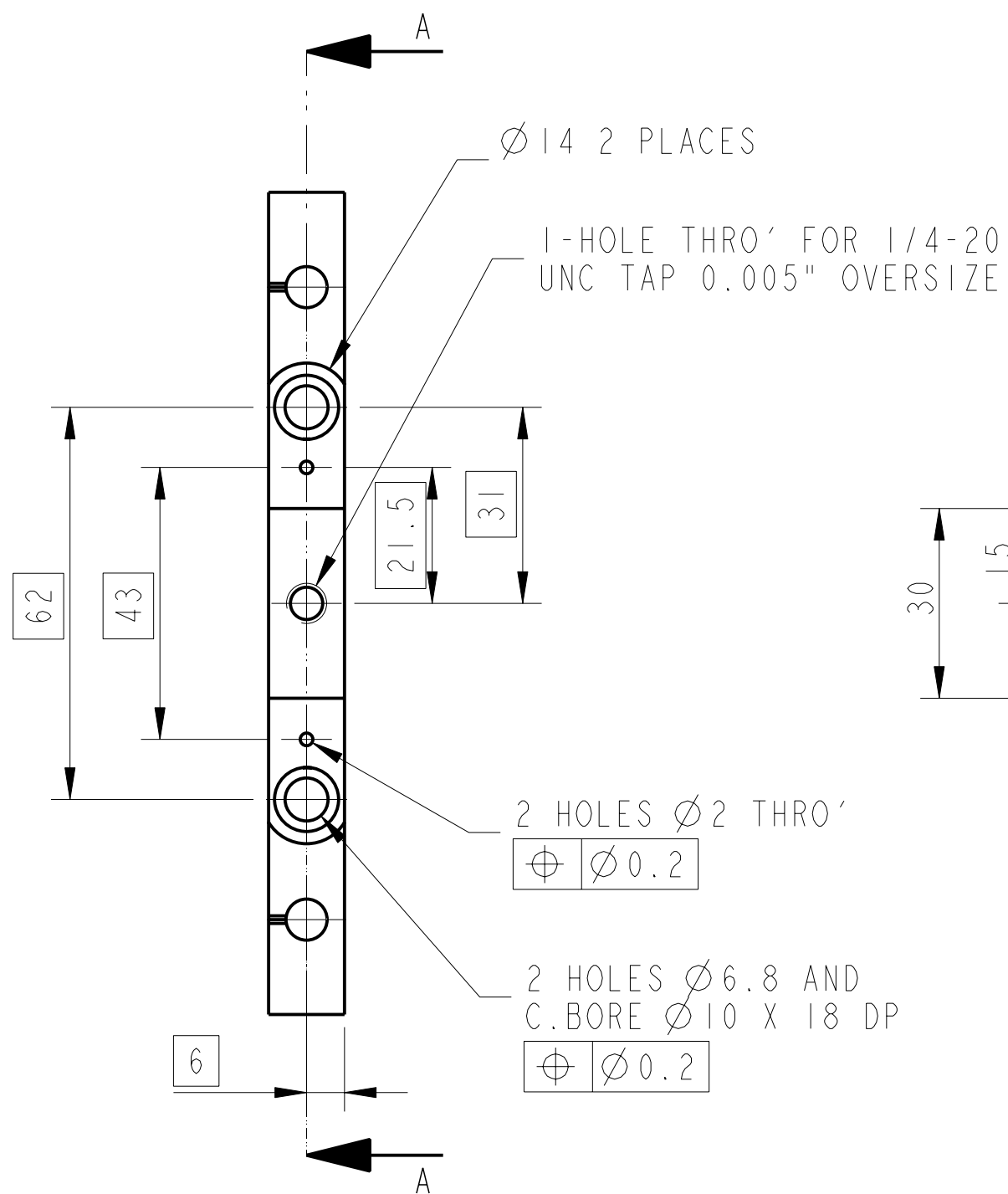
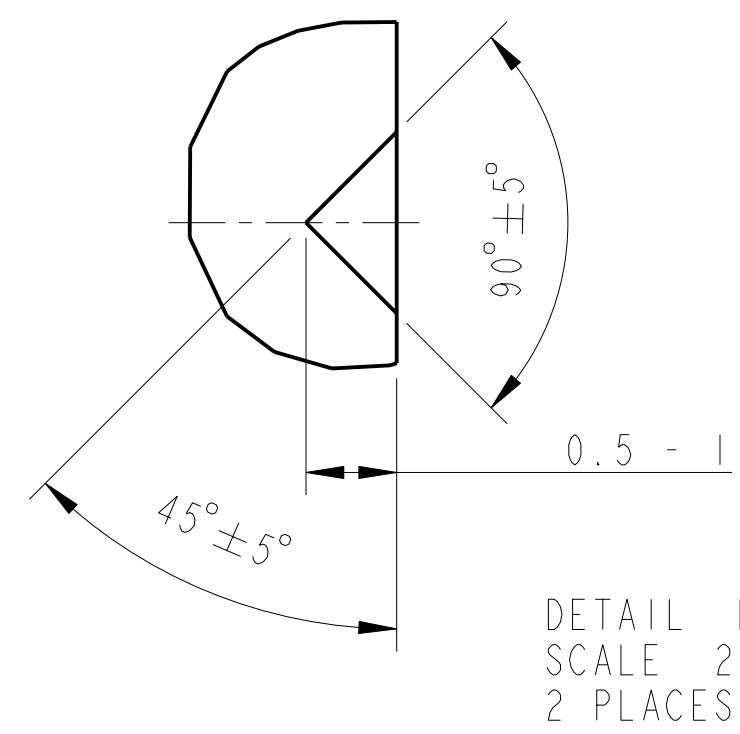
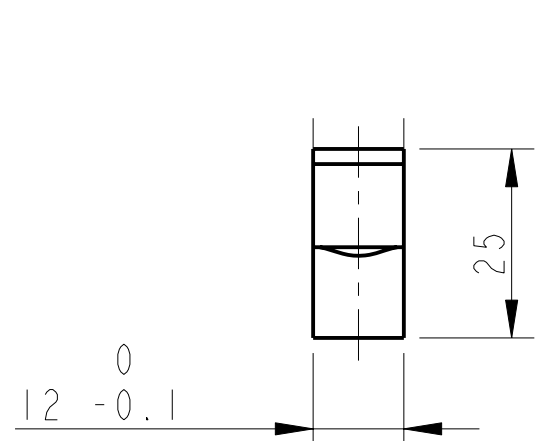
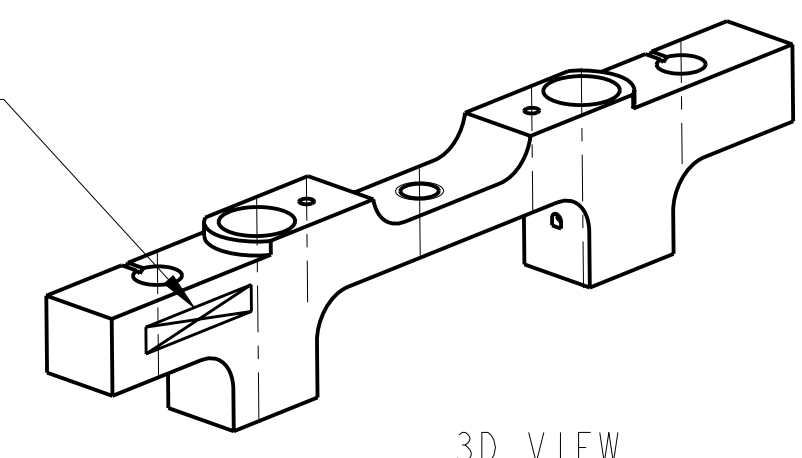


REV.	DATE	DCN #	DRAWING TREE #
A	9/OCT/06	E060248	
B	17/DEC/07	E060248-B	



PART NO. (SEE NOTE 4) TO BE ETCHED OR STAMPED IN APPROX POSITION SHOWN.



DETAIL B
SCALE 20:1
2 PLACES

NOTES: (UNLESS OTHERWISE SPECIFIED)				CALIFORNIA INSTITUTE OF TECHNOLOGY	
1. REMOVE ALL SHARP EDGES, R.02 MIN.	DIMENSIONS ARE IN mm (INCHES)		GLASGOW UNIVERSITY GEO 600 GROUP		
2. DO NOT SCALE FROM DRAWING.	TOLERANCES:		RUTHERFORD APPLETON LABORATORIES		
3. ALL MACHINING FLUIDS SHALL BE WATER SOLUBLE AND FREE OF SULFUR, CHLORINE AND SILICONE, SUCH AS CINCINNATI MILACRON'S CIMTECH 410 (STAINLESS STEEL).	X.XX ± 0.2 mm		SYSTEM ADVANCED LIGO		
4. SCRIBE, ENGRAVE OR STAMP DRAWING PART NUMBER ON NOTED SURFACE OF PART AND A THREE DIGIT SERIAL NUMBER. SERIAL NUMBERS START AT 001 FOR THE FIRST PART AND PROCEED CONSECUTIVELY. USE .07" HIGH CHARACTERS. EXAMPLE: D020188-001. A VIBRATORY TOOL MAY BE USED.	ANGULAR $\pm 0.25^\circ$		SUB-SYSTEM SUS		
	MATERIAL: AL ALLOY 5083		NEXT ASSY TOP MASS QUAD N-PTYPE		
	FINISH: CLEAN, GREASE FREE $\sqrt{\mu m}$ (min) Ra = 1.6		PART NAME OSEM & ECD UNIT BACKBONE		
	DRAWN: J O'DELL 27/OCT/05		SIZE OSEM & ECD UNIT		
	CHECKED: IW 07/DEC/05		DRG. NO. D060407		
	APPROVED: IW 08/DEC/05		SCALE 1:1 PROJECTION		