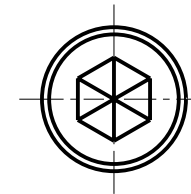
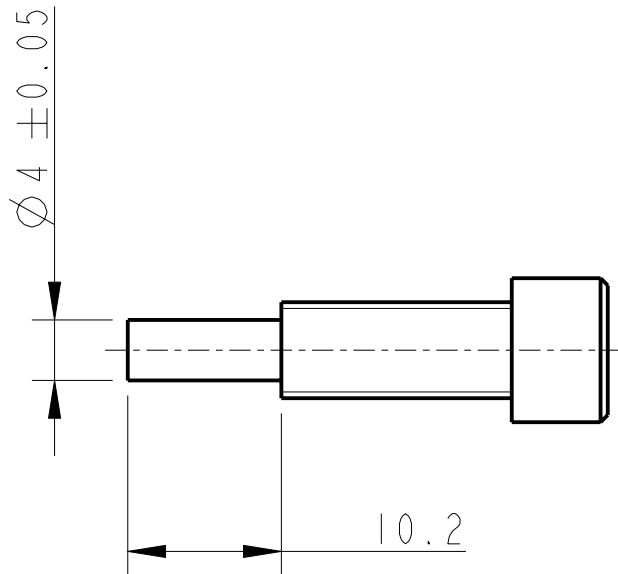
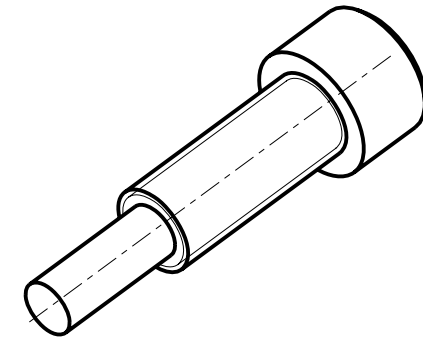




REV.	DATE	DCN #	DRAWING TREE #
A	19/OCT/06.	E060248	
B	17/DEC/07	E060248-B	
H	15/JULY/08	E080368	



SCALE 2:1

ADDITIONAL NOTES:

5. MODIFY A STANDARD 1/4-20 X 1" LONG UNC CAPHEAD SCREW

NOTES: (UNLESS OTHERWISE SPECIFIED)			CALIFORNIA INSTITUTE OF TECHNOLOGY MASSACHUSETTS INSTITUTE OF TECHNOLOGY IGR, GLASGOW UNIVERSITY GEO 600 GROUP RUTHERFORD APPLETON LABORATORIES												
1. REMOVE ALL SHARP EDGES, R.02 MIN. 2. DO NOT SCALE FROM DRAWING. 3. ALL MACHINING FLUIDS SHALL BE WATER SOLUBLE AND FREE OF SULFUR, CHLORINE AND SILICONE, SUCH AS CINCINNATI MILACRON'S CIMTECH 410 (STAINLESS STEEL) 4. SCRIBE, ENGRAVE OR STAMP DRAWING PARTNUMBER ON NOTED SURFACE OF PART AND A THREE DIGIT SERIAL NUMBER. SERIAL NUMBERS START AT 001 FOR THE FIRST PART AND PROCEED CONSECUTIVELY. USE .07" HIGH CHARACTERS. EXAMPLE: D020188- 001. A VIBRATORY TOOL MAY BE USED.	DIMENSIONS ARE IN mm [INCHES] TOLERANCES: X.XX ±0.2 mm ANGULAR ±0.25 °														
	MATERIAL: ST. STEEL 304/316		SYSTEM ADVANCED LIGO												
	FINISH: CLEAN, GREASE FREE √μm [μin] Ra = 1.6		SUB-SYSTEM SUS												
	<table border="1"> <thead> <tr> <th></th> <th>NAME</th> <th>DATE</th> </tr> </thead> <tbody> <tr> <td>DRAWN</td> <td>J O'DELL</td> <td>27/OCT/05</td> </tr> <tr> <td>CHECKED</td> <td>AJB</td> <td>5MAY08</td> </tr> <tr> <td>APPROVED</td> <td>AJB</td> <td>15/JULY/08</td> </tr> </tbody> </table>			NAME	DATE	DRAWN	J O'DELL	27/OCT/05	CHECKED	AJB	5MAY08	APPROVED	AJB	15/JULY/08	NEXT ASSY TOP MASS QUAD N-P-TYPE
	NAME	DATE													
DRAWN	J O'DELL	27/OCT/05													
CHECKED	AJB	5MAY08													
APPROVED	AJB	15/JULY/08													
PART NAME 1/4" 20 UNC X 1" CAP HEAD OSEM & ECD UNIT			SIZE A	DRG. NO. D060413											
SCALE 1:1			PROJECTION: 	SHEET 1 OF 1											