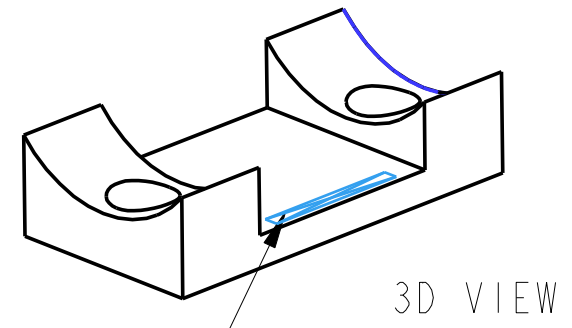
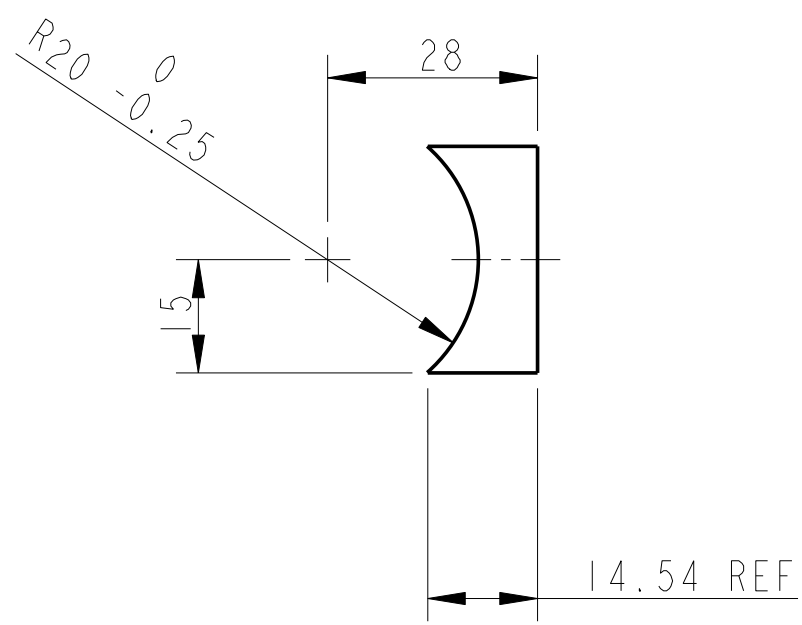
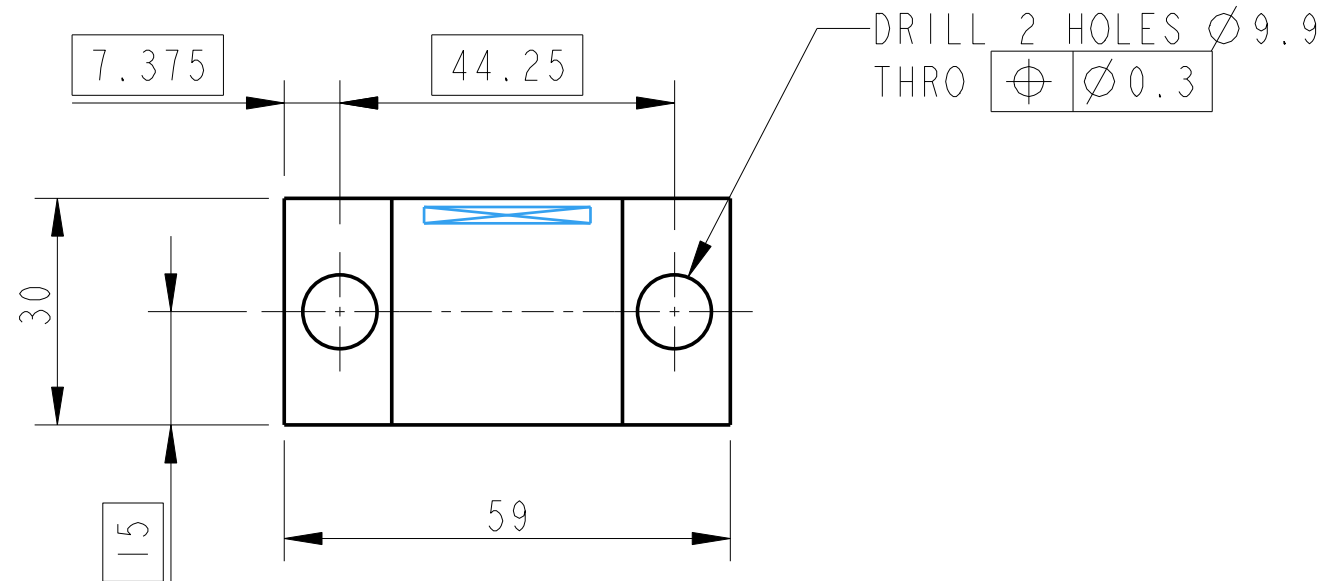
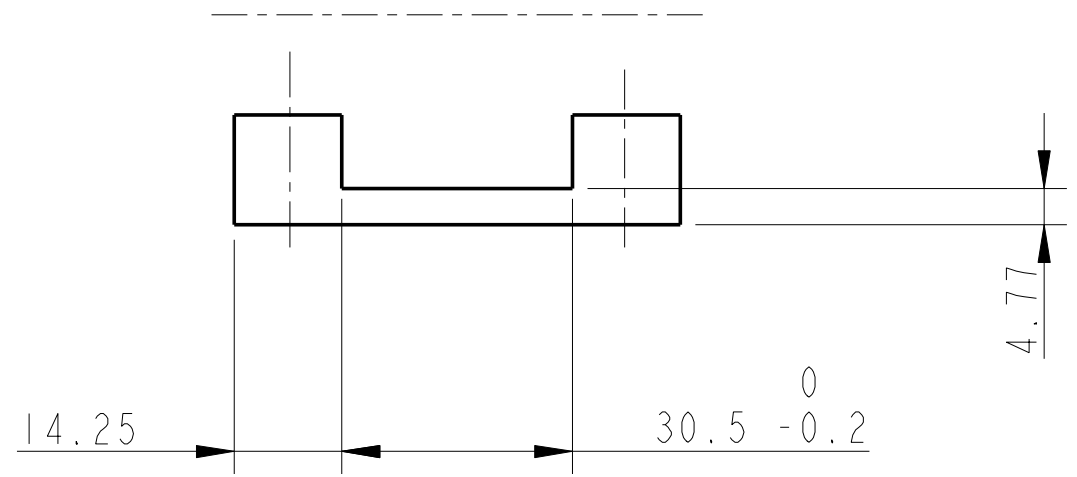


REV.	DATE	DCN #	DRAWING TREE #
A	9/OCT/06	E060248	.
B	17/DEC/07	E060248-B	.



PART NO. (SEE NOTE 4) TO BE ETCHED OR STAMPED IN APPROX POSITION SHOWN.



NOTES: (UNLESS OTHERWISE SPECIFIED)			CALIFORNIA INSTITUTE OF TECHNOLOGY MASSACHUSETTS INSTITUTE OF TECHNOLOGY 1GR, GLASGOW UNIVERSITY GEO 600 GROUP RUTHERFORD APPLETON LABORATORIES	
1. REMOVE ALL SHARP EDGES, R.02 MIN. 2. DO NOT SCALE FROM DRAWING. 3. ALL MACHINING FLUIDS SHALL BE WATER SOLUBLE AND FREE OF SULFUR, CHLORINE AND SILICONE, SUCH AS CINCINNATI MILACRON'S CIMTECH 410 (STAINLESS STEEL) 4. SCRIBE, ENGRAVE OR STAMP DRAWING PARTNUMBER ON NOTED SURFACE OF PART AND A THREE DIGIT SERIAL NUMBER. SERIAL NUMBERS START AT 001 FOR THE FIRST PART AND PROCEED CONSECUTIVELY. USE .07" HIGH CHARACTERS. EXAMPLE: D020188- 001. A VIBRATORY TOOL MAY BE USED.	DIMENSIONS ARE IN mm [INCHES]			
	TOLERANCES: X.XX ± 0.1 mm ANGULAR $\pm 0.25^\circ$		SYSTEM ADVANCED LIGO	
	MATERIAL: AL ALLOY 5083		SUB-SYSTEM SUS	
	FINISH: CLEAN, GREASE FREE $\sqrt{\mu m}$ [μin] Ra = 1.6		NEXT ASSY TOP MASS QUAD N-PTYPE	
DRAWN J O'DELL 19/Oct/06		PART NAME BLADE TIP Z POSITION ADJ (BTM HALF PART 2)		
CHECKED IW 07/DEC/05		PART NO. D060414		
APPROVED IW 08/DEC/05		SCALE 1:1 PROJECTION:		
		SHEET 1 OF 1		