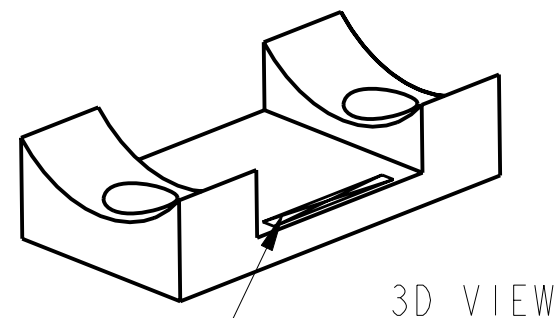
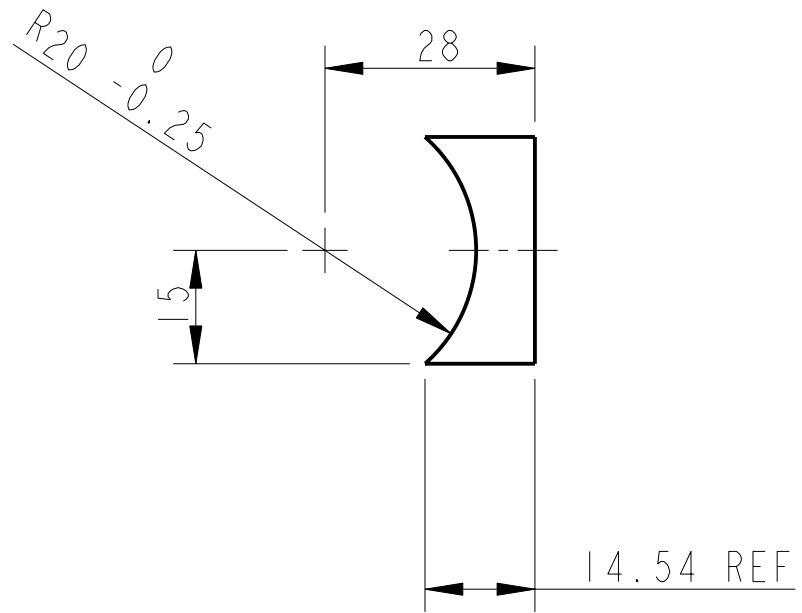
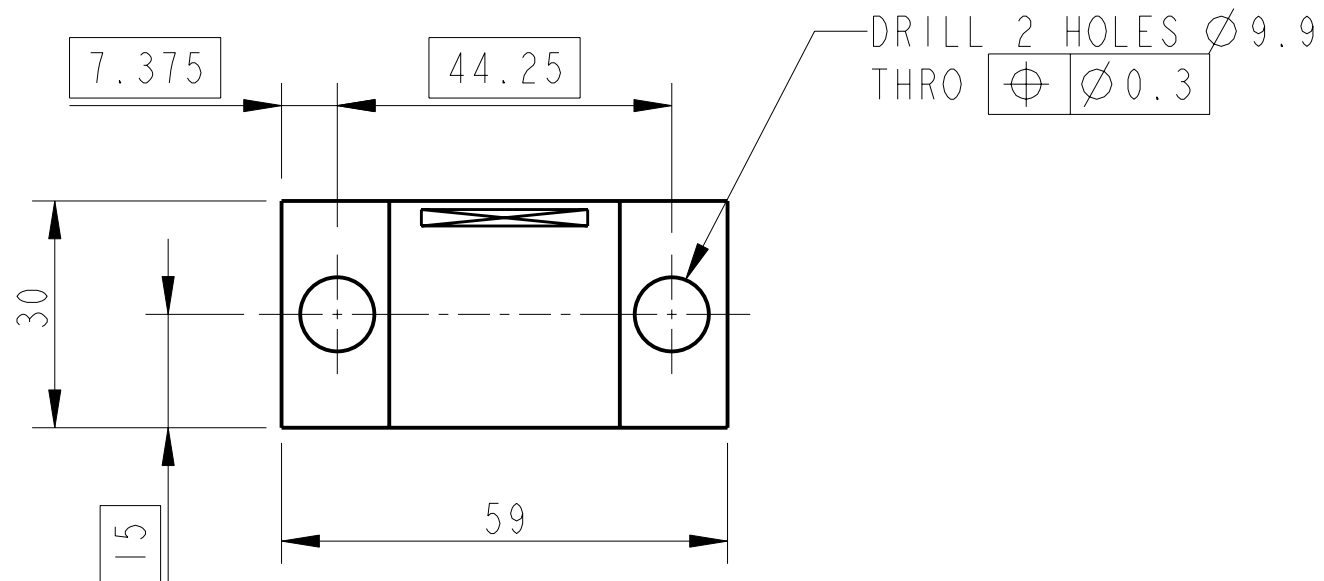
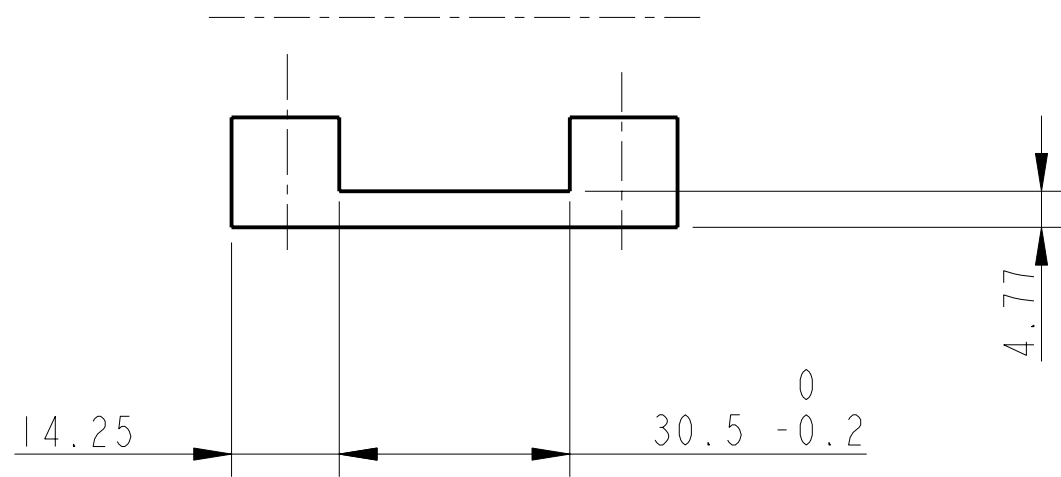


REV.	DATE	DCN #	DRAWING TREE #
A	9/OCT/06	E060248	
B	17/DEC/07	E060248-B	



PART NO. (SEE NOTE 4) TO BE ETCHED OR STAMPED IN APPROX POSITION SHOWN.



NOTES: (UNLESS OTHERWISE SPECIFIED)				CALIFORNIA INSTITUTE OF TECHNOLOGY MASSACHUSETTS INSTITUTE OF TECHNOLOGY 1GR, GLASGOW UNIVERSITY GEO 600 GROUP RUTHERFORD APPLETON LABORATORIES												
1. REMOVE ALL SHARP EDGES, R.02 MIN. 2. DO NOT SCALE FROM DRAWING. 3. ALL MACHINING FLUIDS SHALL BE WATER SOLUBLE AND FREE OF SULFUR, CHLORINE AND SILICONE, SUCH AS CINCINNATI MILACRON'S CIMTECH 410 (STAINLESS STEEL) 4. SCRIBE, ENGRAVE OR STAMP DRAWING PARTNUMBER ON NOTED SURFACE OF PART AND A THREE DIGIT SERIAL NUMBER. SERIAL NUMBERS START AT 001 FOR THE FIRST PART AND PROCEED CONSECUTIVELY. USE .07" HIGH CHARACTERS. EXAMPLE: D020188- 001. A VIBRATORY TOOL MAY BE USED.				DIMENSIONS ARE IN mm [INCHES] TOLERANCES: X.XX $\pm 0.1$ mm ANGULAR $\pm 0.25^\circ$												
				MATERIAL: AL ALLOY 5083												
				FINISH: CLEAN, GREASE FREE $\sqrt{\mu\text{m}}$ [ $\mu\text{in}$ ] $R_a = 1.6$												
				<table border="1"> <thead> <tr> <th>NAME</th> <th>DATE</th> </tr> </thead> <tbody> <tr> <td>DRAWN J O'DELL</td> <td>19/Oct/06</td> </tr> <tr> <td>CHECKED IW</td> <td>07/DEC/05</td> </tr> <tr> <td>APPROVED IW</td> <td>08/DEC/05</td> </tr> </tbody> </table>		NAME	DATE	DRAWN J O'DELL	19/Oct/06	CHECKED IW	07/DEC/05	APPROVED IW	08/DEC/05			
NAME	DATE															
DRAWN J O'DELL	19/Oct/06															
CHECKED IW	07/DEC/05															
APPROVED IW	08/DEC/05															
<table border="1"> <tr> <td>SYSTEM</td> <td>ADVANCED LIGO</td> </tr> <tr> <td>SUB-SYSTEM</td> <td>SUS</td> </tr> <tr> <td>NEXT ASSY</td> <td>TOP MASS QUAD N-PTYPE</td> </tr> <tr> <td>PART NAME</td> <td>BLADE TIP Z POSITION ADJ (BTM HALF PART 2)</td> </tr> </table>		SYSTEM	ADVANCED LIGO	SUB-SYSTEM	SUS	NEXT ASSY	TOP MASS QUAD N-PTYPE	PART NAME	BLADE TIP Z POSITION ADJ (BTM HALF PART 2)	<table border="1"> <tr> <td>SIZE</td> <td>B</td> </tr> <tr> <td>DRG. NO.</td> <td>D060414</td> </tr> <tr> <td>REV</td> <td>G.</td> </tr> </table>	SIZE	B	DRG. NO.	D060414	REV	G.
SYSTEM	ADVANCED LIGO															
SUB-SYSTEM	SUS															
NEXT ASSY	TOP MASS QUAD N-PTYPE															
PART NAME	BLADE TIP Z POSITION ADJ (BTM HALF PART 2)															
SIZE	B															
DRG. NO.	D060414															
REV	G.															
SCALE 1:1				PROJECTION:												
				SHEET 1 OF 1												