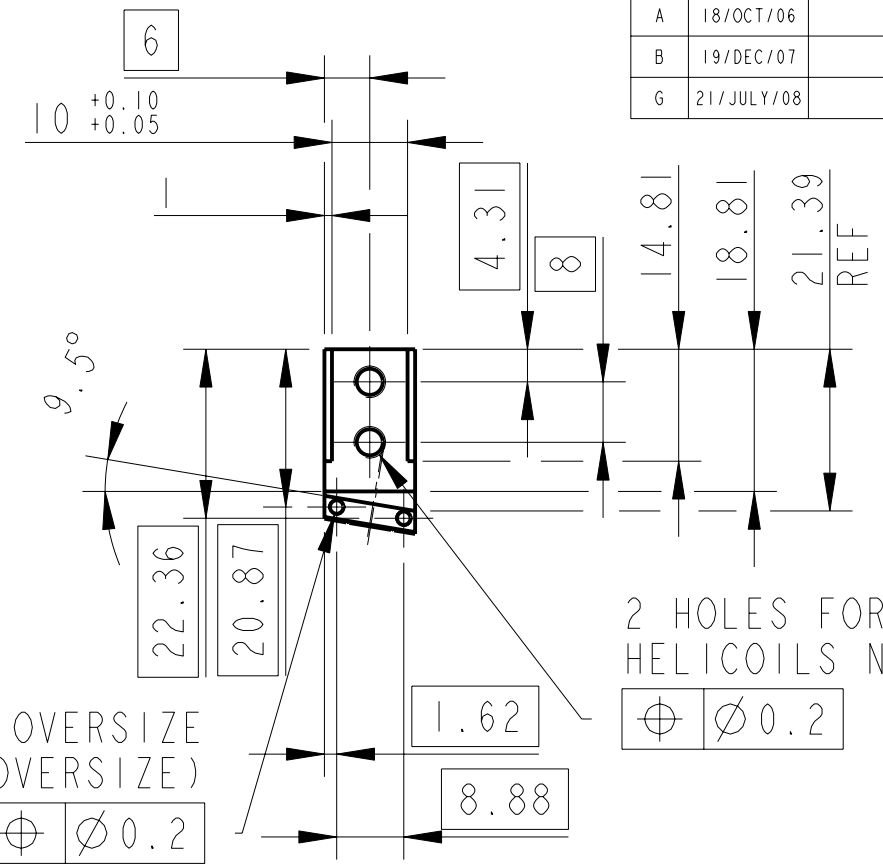
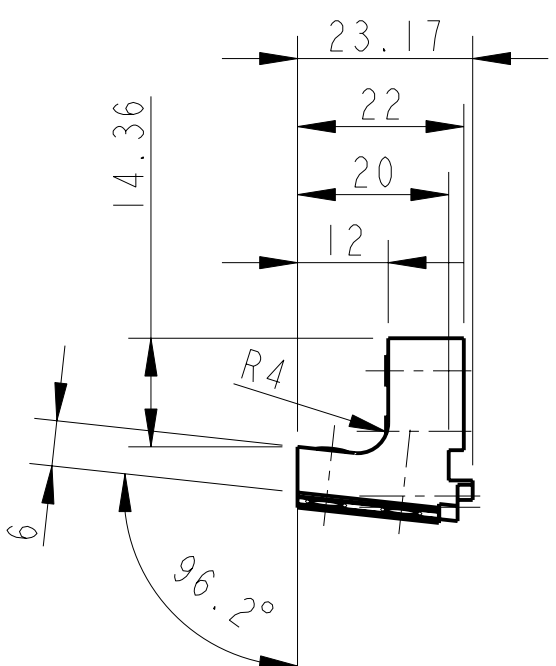
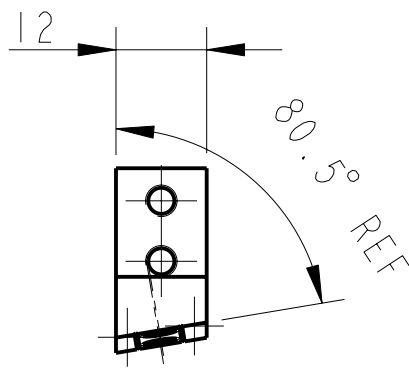
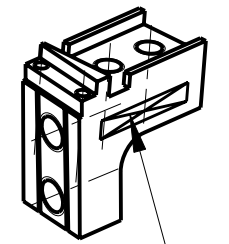


REV.	DATE	DCN #	DRAWING TREE #
A	18/OCT/06	E060247	
B	19/DEC/07	E060247-B	
G	21/JULY/08	E080371	

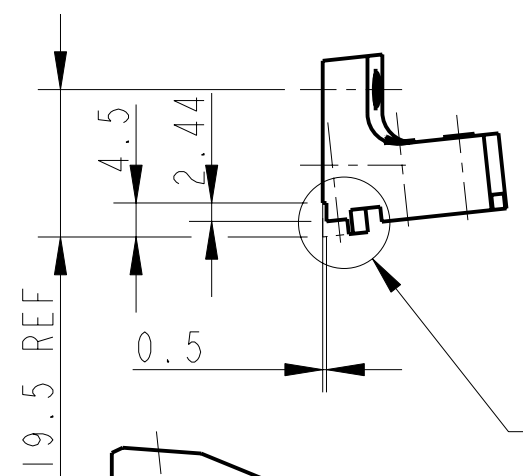
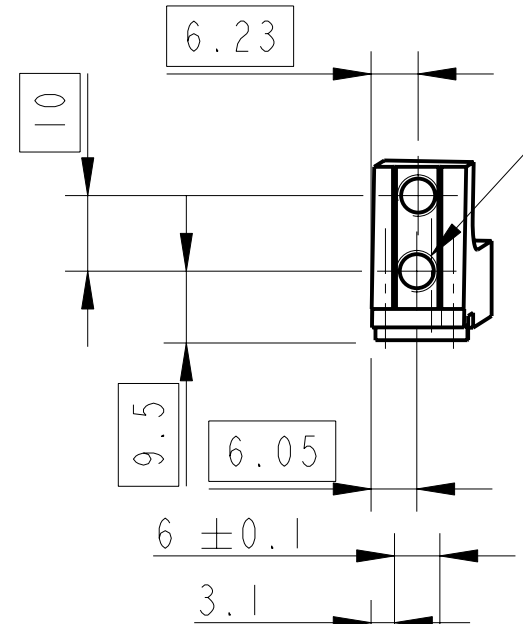


2 HOLES TAPPED 2-56 UNC X 10DP 0.005 OVERSIZE (ALL RADIAL DIMS OVERSIZE)

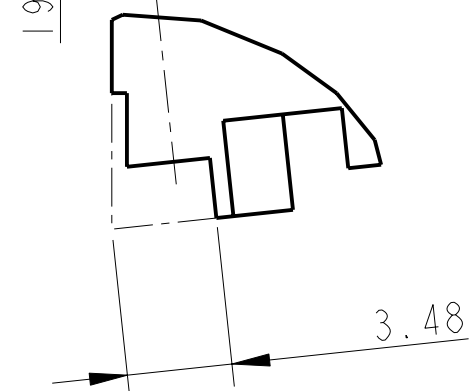
2 HOLES FOR 1/4-20 UNC HELICOILS 8 DP, HELICOILS NOT TO BE FITTED



3D VIEW



DETAIL A SCALE 20:1 2 PLACES



DETAIL B SCALE 4:1

PART NO. (SEE NOTE 4) TO BE ETCHED OR STAMPED IN APPROX POSITION SHOWN.

SEE DETAIL A

SEE DETAIL B

NOTES: (UNLESS OTHERWISE SPECIFIED)		DIMENSIONS ARE IN mm [INCHES]		TOLERANCES:	
1. REMOVE ALL SHARP EDGES, R.02 MIN.		X.XX ± 0.2 mm		ANGULAR ± 0.25 °	
2. DO NOT SCALE FROM DRAWING.		MATERIAL: ST. STEEL 304/316		FINISH: CLEAN, GREASE FREE	
3. ALL MACHINING FLUIDS SHALL BE WATER SOLUBLE AND FREE OF SULFUR, CHLORINE AND SILICONE, SUCH AS CINCINNATI MILACRON'S CIMTECH 410 (STAINLESS STEEL)		DRAWN J O'DELL 20/Oct/06		CHECKED AJB 11JUNE08	
4. SCRIBE, ENGRAVE OR STAMP DRAWING PARTNUMBER ON NOTED SURFACE OF PART AND A THREE DIGIT SERIAL NUMBER. SERIAL NUMBERS START AT 001 FOR THE FIRST PART AND PROCEED CONSECUTIVELY. USE .07" HIGH CHARACTERS. EXAMPLE: D020188- 001. A VIBRATORY TOOL MAY BE USED.		APPROVED AJB 21/JULY/08		SCALE 1:1	
		CALIFORNIA INSTITUTE OF TECHNOLOGY MASSACHUSETTS INSTITUTE OF TECHNOLOGY IGR, GLASGOW UNIVERSITY GEO 600 GROUP RUTHERFORD APPLETON LABORATORIES		SYSTEM ADVANCED LIGO	
				SUB-SYSTEM SUS	
				NEXT ASSY QUAD N-PTYPE UI MASS	
				PART NAME UI MASS WIRE CLAMP BODY	
		DRG. NO. D060426		REV. G.	
		SCALE 1:1		PROJECTION: 1st ANGLE	
				SHEET 1 OF 1	