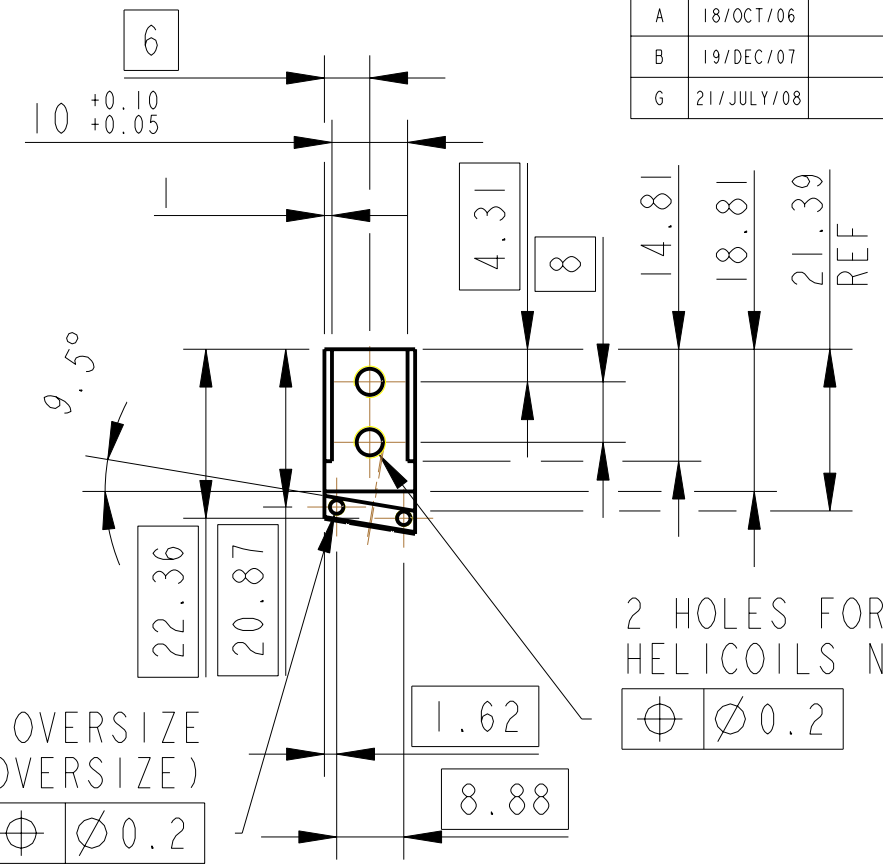
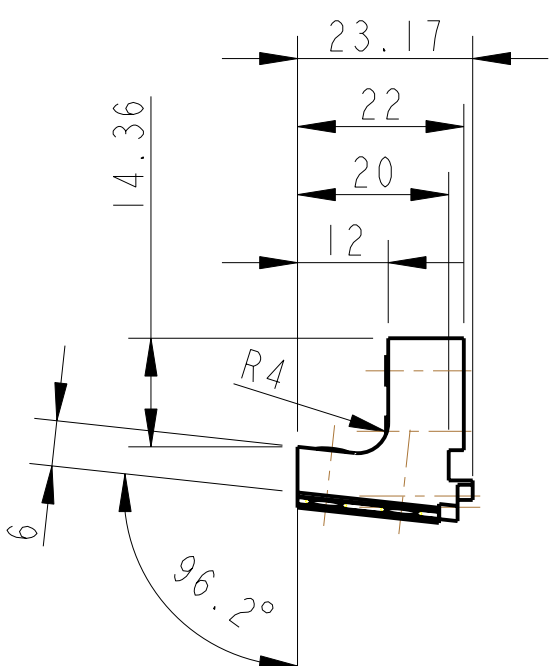
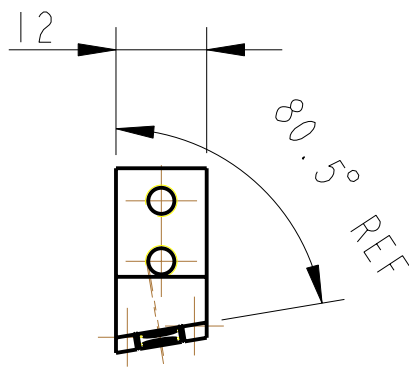


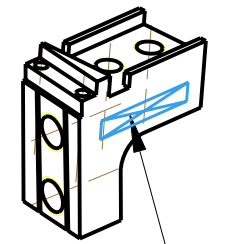
REV.	DATE	DCN #	DRAWING TREE #
A	18/OCT/06	E060247	
B	19/DEC/07	E060247-B	
G	21/JULY/08	E080371	



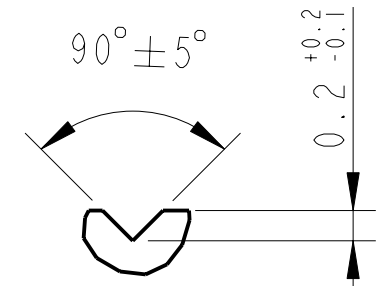
2 HOLES FOR 8-32 UNC HELICOILS THRO' HELICOILS NOT TO BE FITTED

2 HOLES TAPPED 2-56 UNC X 10DP 0.005 OVERSIZE (ALL RADIAL DIMS OVERSIZE)

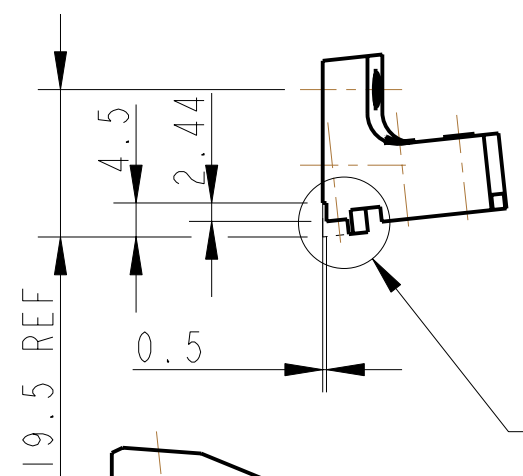
2 HOLES FOR 1/4-20 UNC HELICOILS 8 DP, HELICOILS NOT TO BE FITTED



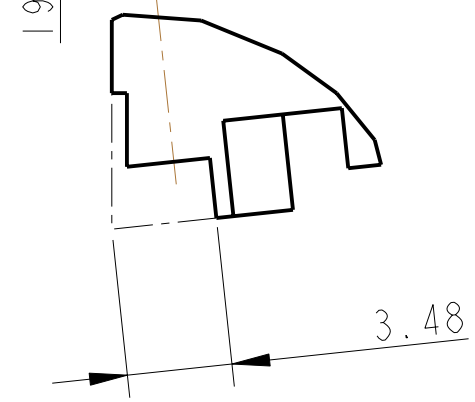
3D VIEW



DETAIL A
SCALE 20:1
2 PLACES

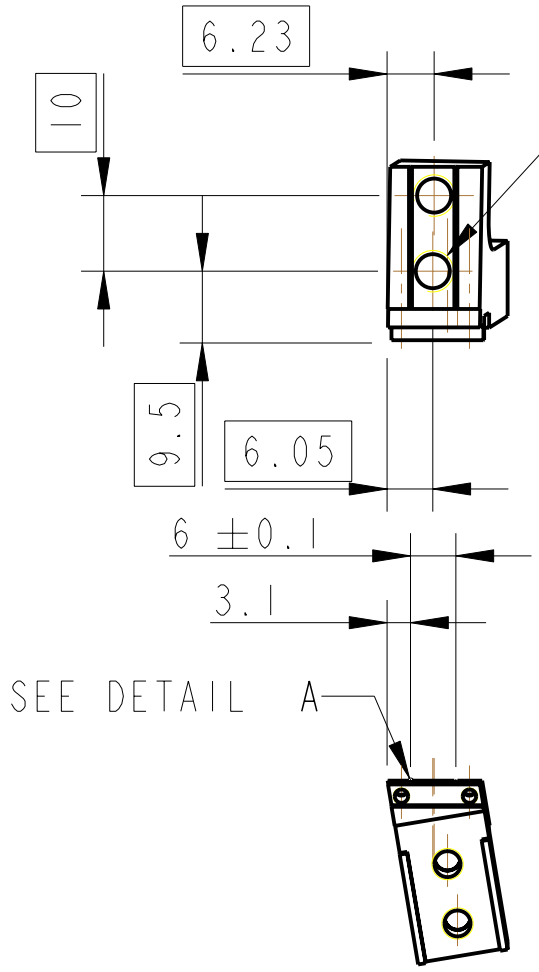


SEE DETAIL B



DETAIL B
SCALE 4:1

PART NO. (SEE NOTE 4) TO BE ETCHED OR STAMPED IN APPROX POSITION SHOWN.



SEE DETAIL A

NOTES: (UNLESS OTHERWISE SPECIFIED)		DIMENSIONS ARE IN mm [INCHES]		TOLERANCES:	
1. REMOVE ALL SHARP EDGES, R.02 MIN.		X.XX ± 0.2 mm		ANGULAR ± 0.25 °	
2. DO NOT SCALE FROM DRAWING.		MATERIAL: ST. STEEL 304/316		FINISH: CLEAN, GREASE FREE	
3. ALL MACHINING FLUIDS SHALL BE WATER SOLUBLE AND FREE OF SULFUR, CHLORINE AND SILICONE, SUCH AS CINCINNATI MILACRON'S CIMTECH 410 (STAINLESS STEEL)		R _a = 1.6		√μm [μin]	
4. SCRIBE, ENGRAVE OR STAMP DRAWING PARTNUMBER ON NOTED SURFACE OF PART AND A THREE DIGIT SERIAL NUMBER. SERIAL NUMBERS START AT 001 FOR THE FIRST PART AND PROCEED CONSECUTIVELY. USE .07" HIGH CHARACTERS. EXAMPLE: D020188- 001. A VIBRATORY TOOL MAY BE USED.		DRAWN J O'DELL 20/Oct/06		CHECKED MB 15/MAR/10	
		APPROVED JOD 15/MAR/10		SCALE 1:1	
		PROJECTION:		SHEET 1 OF 1	

CALIFORNIA INSTITUTE OF TECHNOLOGY MASSACHUSETTS INSTITUTE OF TECHNOLOGY IGR, GLASGOW UNIVERSITY GEO 600 GROUP RUTHERFORD APPLETON LABORATORIES	
SYSTEM	aLIGO
SUB-SYSTEM	SUS
NEXT ASSY	QUAD UI MASS
PART NAME	UI MASS WIRE CLAMP BODY
DRG. NO.	D060426
REV	H.