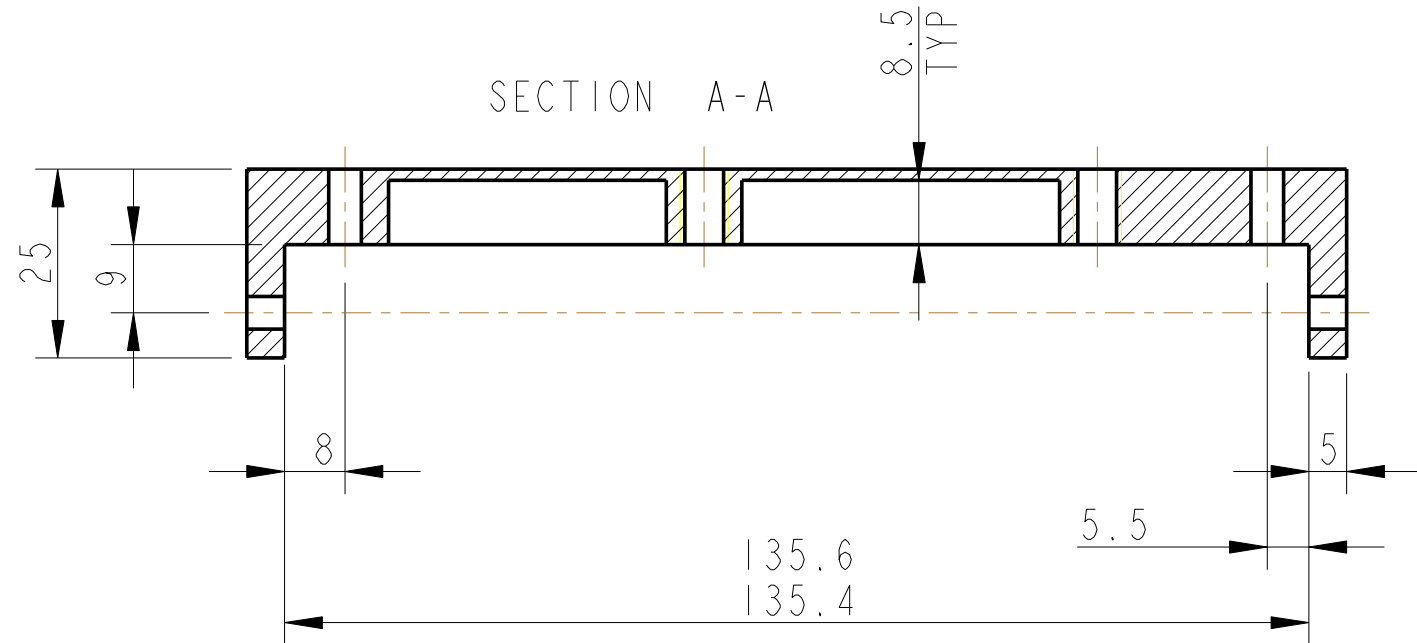


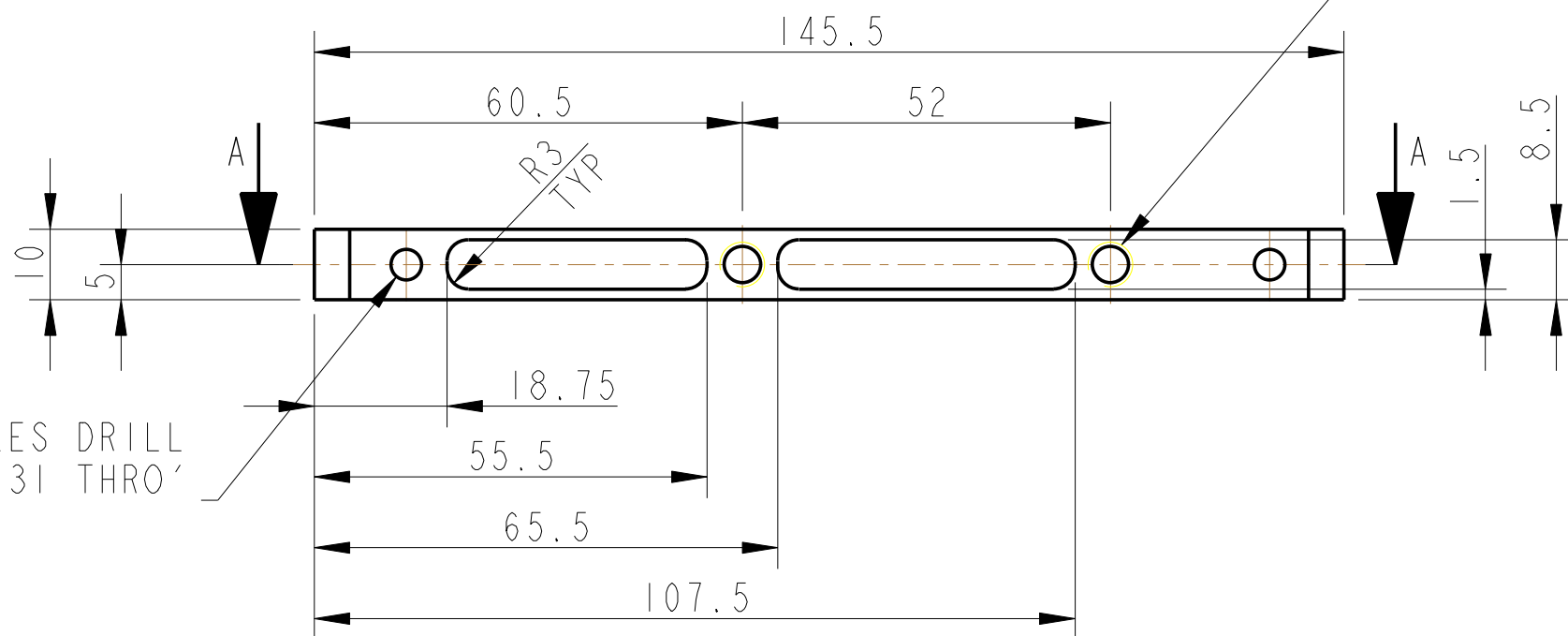
REV.	DATE	DCN #	DRAWING TREE #
A	30-OCT-06	E060260-00	
B	21/DEC/07	E060260-B	
C	22/JULY/08	E080372	

SECTION A-A

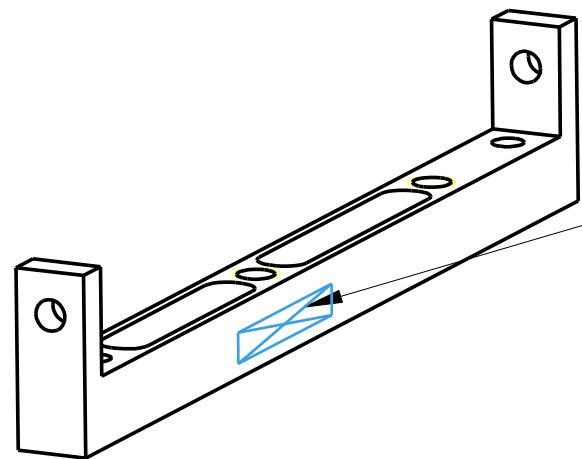
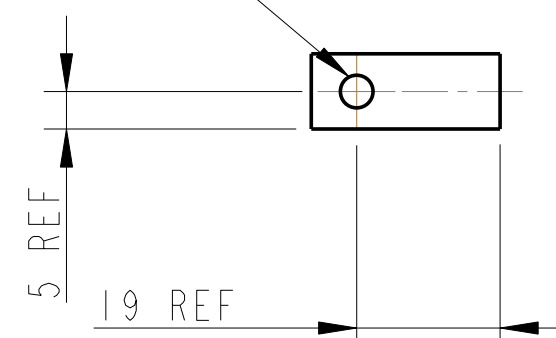


2-THRU' HOLES FOR 1/4-20 UNC X 1.5 D 1g HELICOILS. HELICOILS NOT TO BE FITTED.

2-THRU' HOLES FOR 8-32 UNC X 1.5 D 1g HELICOILS. HELICOILS NOT TO BE FITTED.



2 HOLES DRILL Ø4.31 THRO'



PART NO. (SEE NOTE 4) TO BE ETCHED OR STAMPED IN APPROX POSITION SHOWN.

NOTES: (UNLESS OTHERWISE SPECIFIED)

- REMOVE ALL SHARP EDGES, R.02 MIN.
- DO NOT SCALE FROM DRAWING.
- ALL MACHINING FLUIDS SHALL BE WATER SOLUBLE AND FREE OF SULFUR, CHLORINE AND SILICONE, SUCH AS CINCINNATI MILACRON'S CIMTECH 410 (STAINLESS STEEL)
- SCRIBE, ENGRAVE OR STAMP DRAWING PARTNUMBER ON NOTED SURFACE OF PART AND A THREE DIGIT SERIAL NUMBER. SERIAL NUMBERS START AT 001 FOR THE FIRST PART AND PROCEED CONSECUTIVELY. USE .07" HIGH CHARACTERS. EXAMPLE: D020188- 001. A VIBRATORY TOOL MAY BE USED.

DIMENSIONS ARE IN mm (INCHES) TOLERANCES:

X.XX ±0.2 mm ANGULAR ±0.25 °

MATERIAL: AL ALLOY 5083 H4 OR 6061

FINISH: CLEAN Ra = 1.6

	NAME	DATE
DRAWN	NJS/FEL	13/ JULY/06
CHECKED	AJB	9JUNE08
APPROVED	AJB	22/ JULY/08

CALIFORNIA INSTITUTE OF TECHNOLOGY MASSACHUSETTS INSTITUTE OF TECHNOLOGY IGR, GLASGOW UNIVERSITY GEO 600 GROUP RUTHERFORD APPLETON LABORATORIES

SYSTEM	ADVANCED LIGO
SUB-SYSTEM	SUS
NEXT ASSY	QUAD N-PTYPE LOWER STRUCTURE
PART NAME	EARTHQUAKE-STOP MOUNTS-SHORT LOWER STRUCTURE
DRG. NO.	D060476
SCALE	1:1
PROJECTION	1st Angle
SHEET	1 OF 1