

NOTES CONTINUED:

5. SCRIBE, ENGRAVE, LASER MARK OR MECHANICALLY STAMP (NO DYES OR INKS) A UNIQUE THREE DIGIT SERIAL NUMBER & REVISION NUMBER ON EACH PART. SERIAL NUMBERS START AT 001 FOR THE FIRST ARTICLE AND PROCEED CONSECUTIVELY. BAG AND TAG PARTS WITH THEIR DRAWING PART NUMBER, REVISION, VARIANT OR "TYPE" (IF APPLICABLE), AND QUANTITY. IF PARTS ARE TOO SMALL TO SCRIBE, BAGGING AND TAGGING ALONE IS SUFFICIENT.
 EXAMPLE (PART): 001-v1
 EXAMPLE (TAG): DXXXXXX-VY, TYPE-XX, QTY: TBD

6. MACHINE ALL SURFACES TO REMOVE OXIDES AND MILL FINISH. USE OF ABRASIVE REMOVAL TECHNIQUES IS NOT ALLOWED. REFER TO LIGO-E0900364

7. ALL PARTS SHALL BE MANUFACTURED IN ACCORDANCE WITH LIGO SPECIFICATION E0900364.

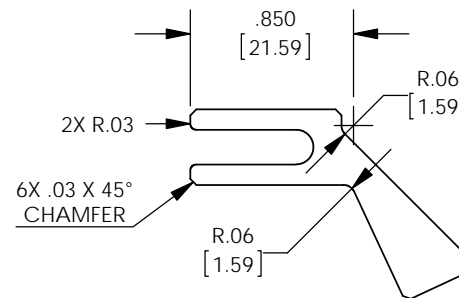
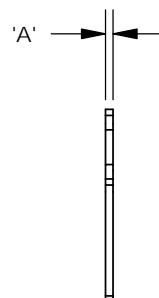
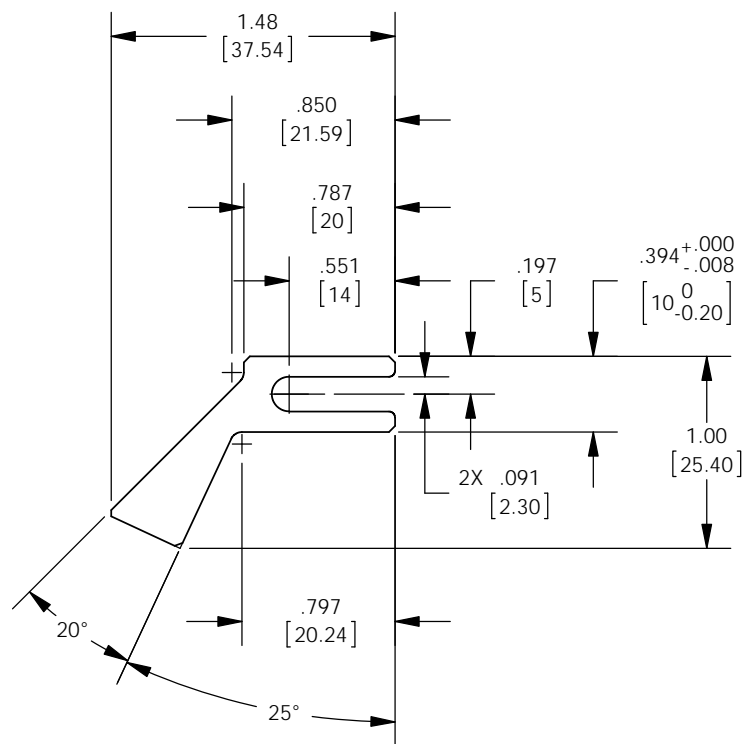
8. ALL MATERIAL IS TO BE VIRGIN MATERIAL (i.e. NO WELD REPAIRS, PLUGS OR RECYCLED MATERIAL). NO REPAIRS SHALL BE MADE UNLESS APPROVED IN ADVANCE, AND IN WRITING, BY LIGO LABORATORY. REFER TO LIGO-E0900364.

| PART NO. | 'A' (mm) | APPROX. WEIGHT (LB.) |
|------------|----------|----------------------|
| D070140-05 | .5 | - |
| D070140-1 | 1 | .001 |
| D070140-2 | 2 | .003 |
| D070140-3 | 3 | .004 |
| D070140-4 | 4 | .006 |
| D070140-5 | 5 | .007 |
| D070140-6 | 6 | .009 |

| REV. | DATE | DCN # | DRAWING TREE # |
|------|-------------|-------------|----------------|
| v1 | 11 AUG 2009 | - | - |
| v3 | 20 JAN 2012 | E1200066-x0 | - |
| - | - | - | - |



ISO VIEW



NOTES AND TOLERANCES: (UNLESS OTHERWISE SPECIFIED)

DIMENSIONS ARE IN INCHES [MM]
 TOLERANCES:
 XX ± .01
 XXX ± .005
 ANGULAR ± 0.5°

1. INTERPRET DRAWING PER ASME Y14.5-1994.
 2. REMOVE ALL SHARP EDGES: .005-.015. FOR MACHINED PARTS. ROUND ALL EDGES APPROXIMATELY R.02 FOR SHEET METAL PARTS.
 3. DO NOT SCALE FROM DRAWING.
 4. ALL MACHINING FLUIDS MUST BE FULLY SYNTHETIC, FULLY WATER SOLUBLE AND FREE OF SULFUR, SILICONE, AND CHLORINE.
MATERIAL 6061-T6 Al
FINISH 63 μinch

LIGO CALIFORNIA INSTITUTE OF TECHNOLOGY
 MASSACHUSETTS INSTITUTE OF TECHNOLOGY

SYSTEM **ADVANCED LIGO** SUB-SYSTEM **SUS**

NEXT ASSY **D060324**

PART NAME **ALIGO, SUS, Quad N-Ptype Top Stage, top stage blade wire clamp shim**

| | | | | | |
|----------|-----------|-------------|------------|----------------|--------------|
| DESIGNER | I.WILMUT | 27 APR 2007 | SIZE | DWG. NO. | REV. |
| DRAFTER | E.SANCHEZ | 20 JAN 2012 | A | D070140 | v3 |
| CHECKER | SEE DCC | SEE DCC | SCALE: 1:1 | PROJECTION: | SHEET 1 OF 1 |
| APPROVAL | SEE DCC | SEE DCC | | | |