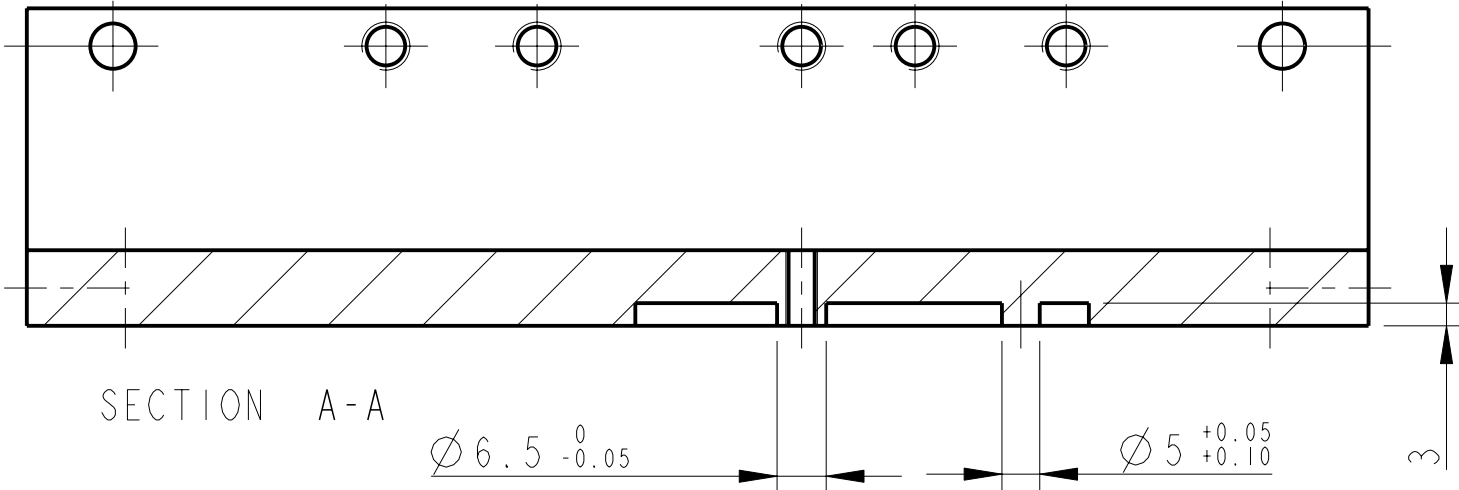
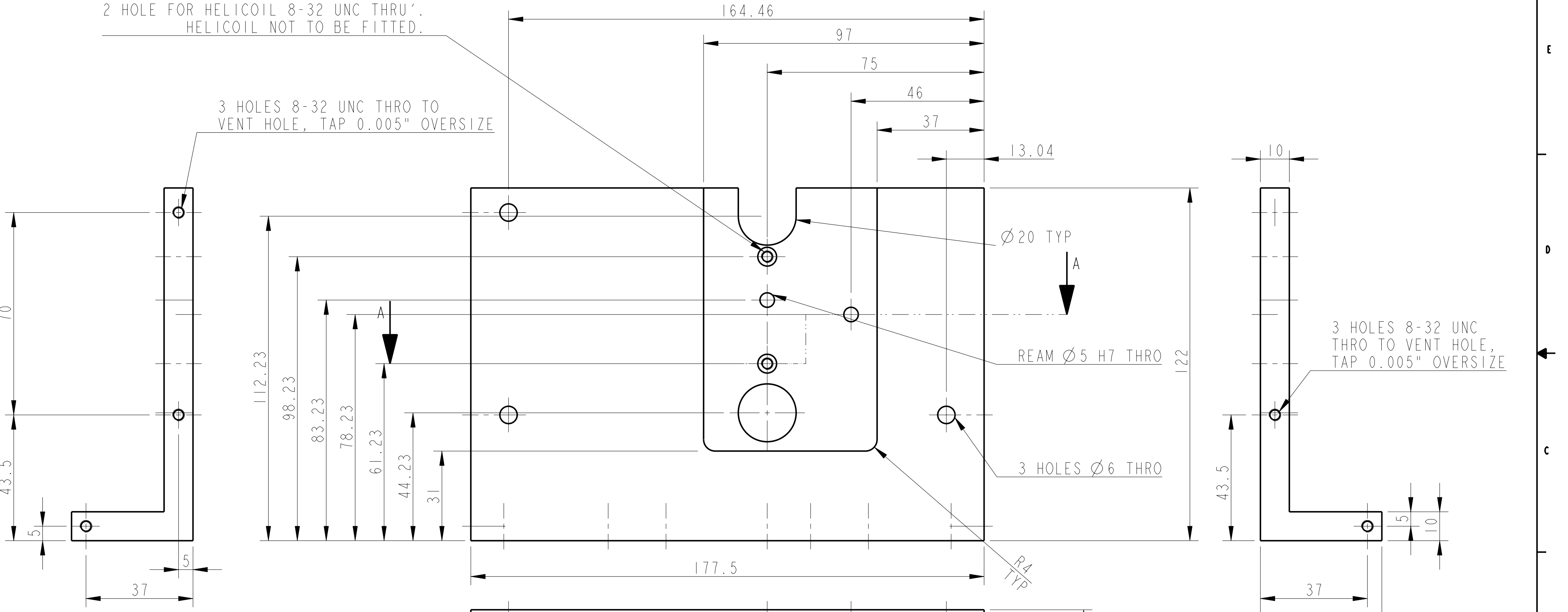


| REV. | DATE | DCN # | DRAWING TREE # |
|------|------------|-----------|----------------|
| B | 21/DEC/07 | E060260-B | |
| C | 22/JULY/08 | E080372 | |



2 HOLE FOR HELICOIL 8-32 UNC THRU'.
HELICOIL NOT TO BE FITTED.

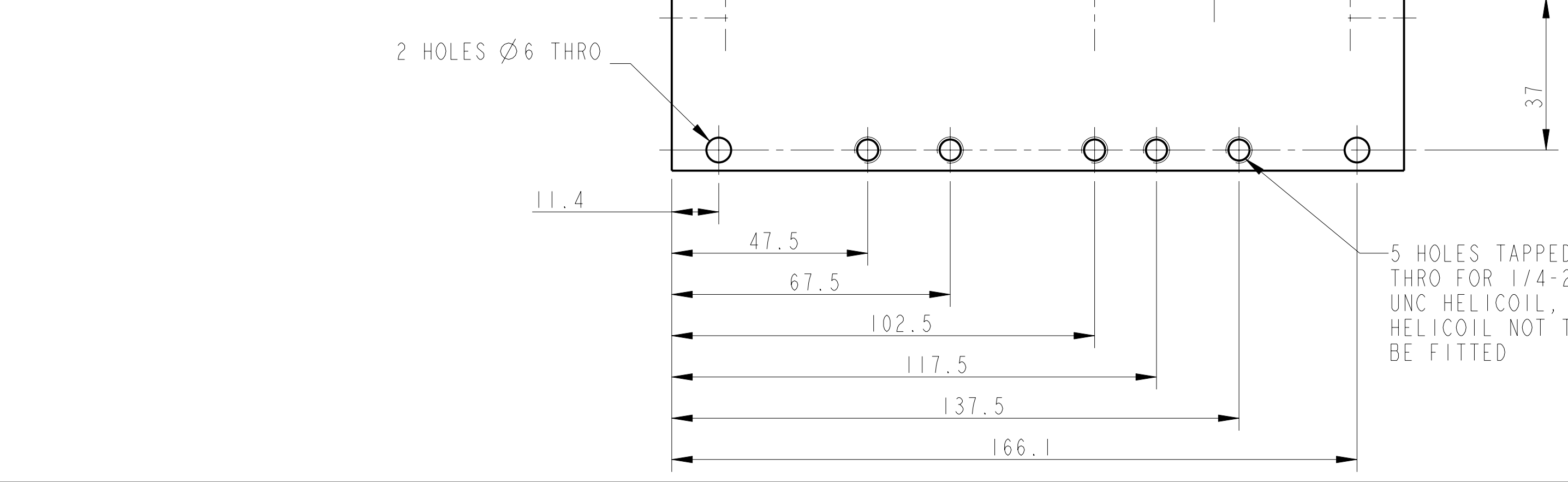
3 HOLES 8-32 UNC THRO TO
VENT HOLE, TAP 0.005" OVERSIZE



3 HOLES 8-32 UNC
THRO TO VENT HOLE,
TAP 0.005" OVERSIZE

2 HOLES Ø6 THRO

5 HOLES TAPPED
THRO FOR 1/4-20
UNC HELICOIL,
HELICOIL NOT TO
BE FITTED



| NOTES: (UNLESS OTHERWISE SPECIFIED) | | | | CALIFORNIA INSTITUTE OF TECHNOLOGY | | | |
|---|-------------------------------|---|---|--|--|--|--|
| 1. REMOVE ALL SHARP EDGES, R.02 MIN. | 2. DO NOT SCALE FROM DRAWING. | 3. ALL MACHINING FLUIDS SHALL BE WATER SOLUBLE AND FREE OF SULFUR, CHLORINE AND SILICONE, SUCH AS CINCINNATI MILACRON'S CIMTECH 410 (STAINLESS STEEL) | 4. SCRIBE, ENGRAVE OR STAMP DRAWING PART NUMBER ON NOTED SURFACE OF PART AND A THREE DIGIT SERIAL NUMBER. SERIAL NUMBERS START AT 001 FOR THE FIRST PART AND PROCEED CONSECUTIVELY. USE .07" HIGH CHARACTERS. EXAMPLE: D020188-001. A VIBRATORY TOOL MAY BE USED. | MASSACHUSETTS INSTITUTE OF TECHNOLOGY IGR, GLASGOW UNIVERSITY GEO 600 GROUP RUTHERFORD APPLETON LABORATORIES | | | |
| DIMENSIONS ARE IN mm (INCHES) | | | | SYSTEM ADVANCED LIGO | | | |
| TOLERANCES: X.XX ± mm [INCHES] ANGULAR ±0.25° | | | | SUB-SYSTEM SUS | | | |
| MATERIAL: AL ALLOY 6061 | | | | NEXT ASSY D060454 | | | |
| FINISH: CLEAN AND DEGREASED √µm [µin] Ra = 1.6 | | | | PART NAME TEST CHAIN UIM STOP | | | |
| DRAWN: I WILMUT 29/NOV/07 | | | | RIGHT HAND | | | |
| CHECKED: AJB 19MAY08 | | | | DRG. NO. D070544 | | | |
| APPROVED: AJB 22/JULY/08 | | | | SCALE 1:1 PROJECTION 1 OF 1 | | | |