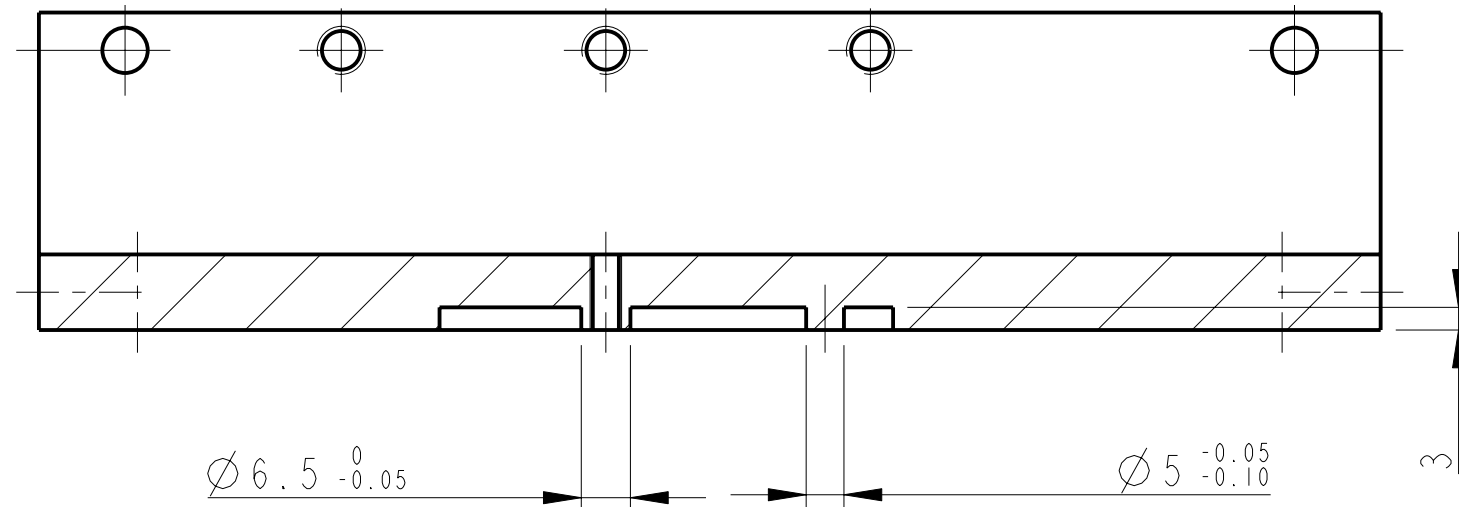
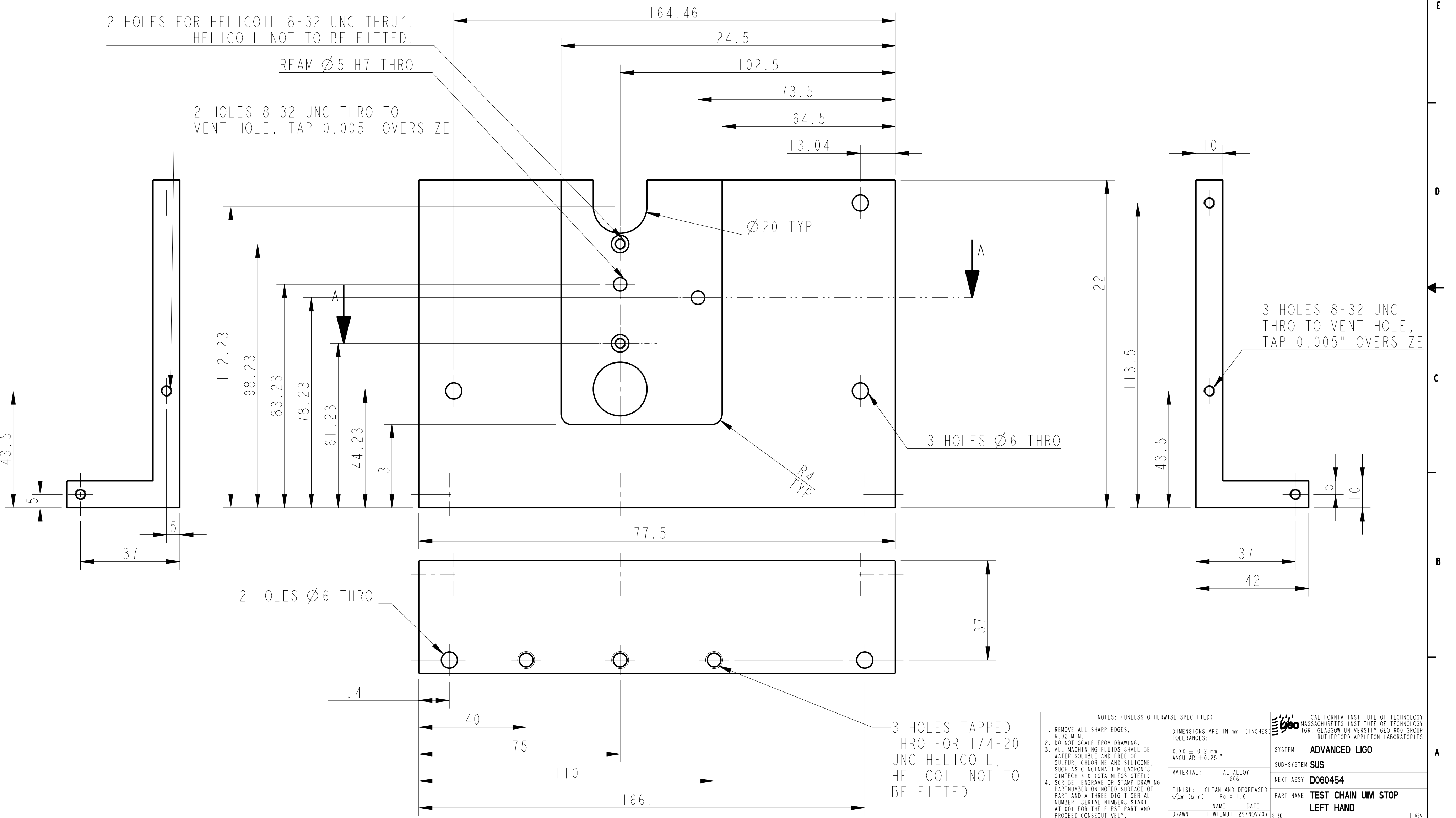


REV.	DATE	DCN #	DRAWING TREE #
B	21/DEC/07	E060260-B	
C	22/JULY/08	E080372	



SECTION A-A



2 HOLES FOR HELICOIL 8-32 UNC THRU',
HELICOIL NOT TO BE FITTED.
REAM $\varnothing 5$ H7 THRO
2 HOLES 8-32 UNC THRO TO
VENT HOLE, TAP 0.005" OVERSIZE

3 HOLES 8-32 UNC
THRO TO VENT HOLE,
TAP 0.005" OVERSIZE

3 HOLES TAPPED
THRO FOR 1/4-20
UNC HELICOIL,
HELICOIL NOT TO
BE FITTED

NOTES: (UNLESS OTHERWISE SPECIFIED)

- REMOVE ALL SHARP EDGES, R.02 MIN.
- DO NOT SCALE FROM DRAWING.
- ALL MACHINING FLUIDS SHALL BE WATER SOLUBLE AND FREE OF SULFUR, CHLORINE AND SILICONE, SUCH AS CINCINNATI MILACRON'S CIMTECH 410 (STAINLESS STEEL).
- SCRIBE, ENGRAVE OR STAMP DRAWING PART NUMBER ON NOTED SURFACE OF PART AND A THREE DIGIT SERIAL NUMBER. SERIAL NUMBERS START AT 001 FOR THE FIRST PART AND PROCEED CONSECUTIVELY. USE .07" HIGH CHARACTERS. EXAMPLE: D020188-001. A VIBRATORY TOOL MAY BE USED.

DIMENSIONS ARE IN mm (INCHES) TOLERANCES:
X.XX ± 0.2 mm
ANGULAR $\pm 0.25^\circ$

MATERIAL: AL ALLOY 6061

FINISH: CLEAN AND DEGREASED
 $\sqrt{\mu m}$ (min) Ra = 1.6

NAME	DATE
DRAWN I WILMUT	29/NOV/07
CHECKED AJB	16MAY08
APPROVED AJB	22/JULY/08

CALIFORNIA INSTITUTE OF TECHNOLOGY
GLASGOW UNIVERSITY GEO 600 GROUP
RUTHERFORD APPLETON LABORATORIES

SYSTEM **ADVANCED LIGO**
SUB-SYSTEM **SUS**
NEXT ASSY **D060454**
PART NAME **TEST CHAIN UIM STOP**
LEFT HAND
DRG. NO. **D070545**
SCALE 1:1 PROJECTION 1 OF 1