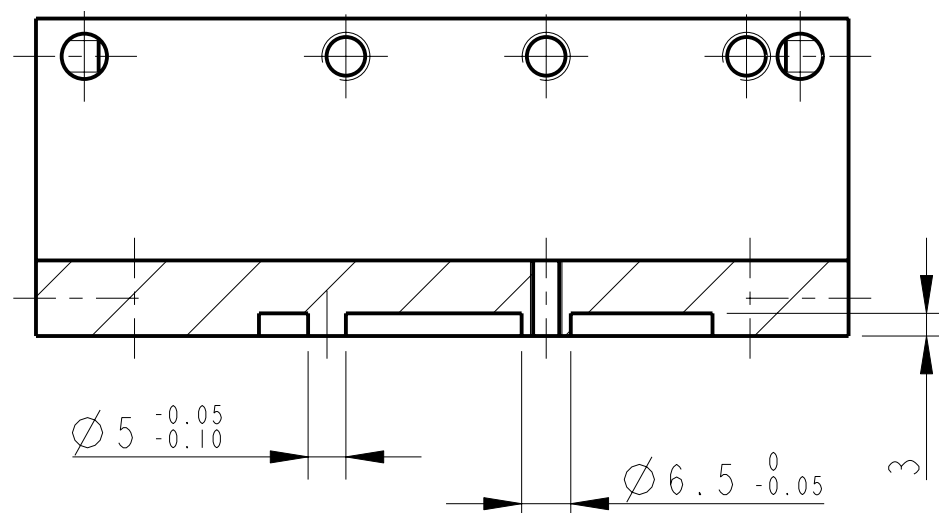
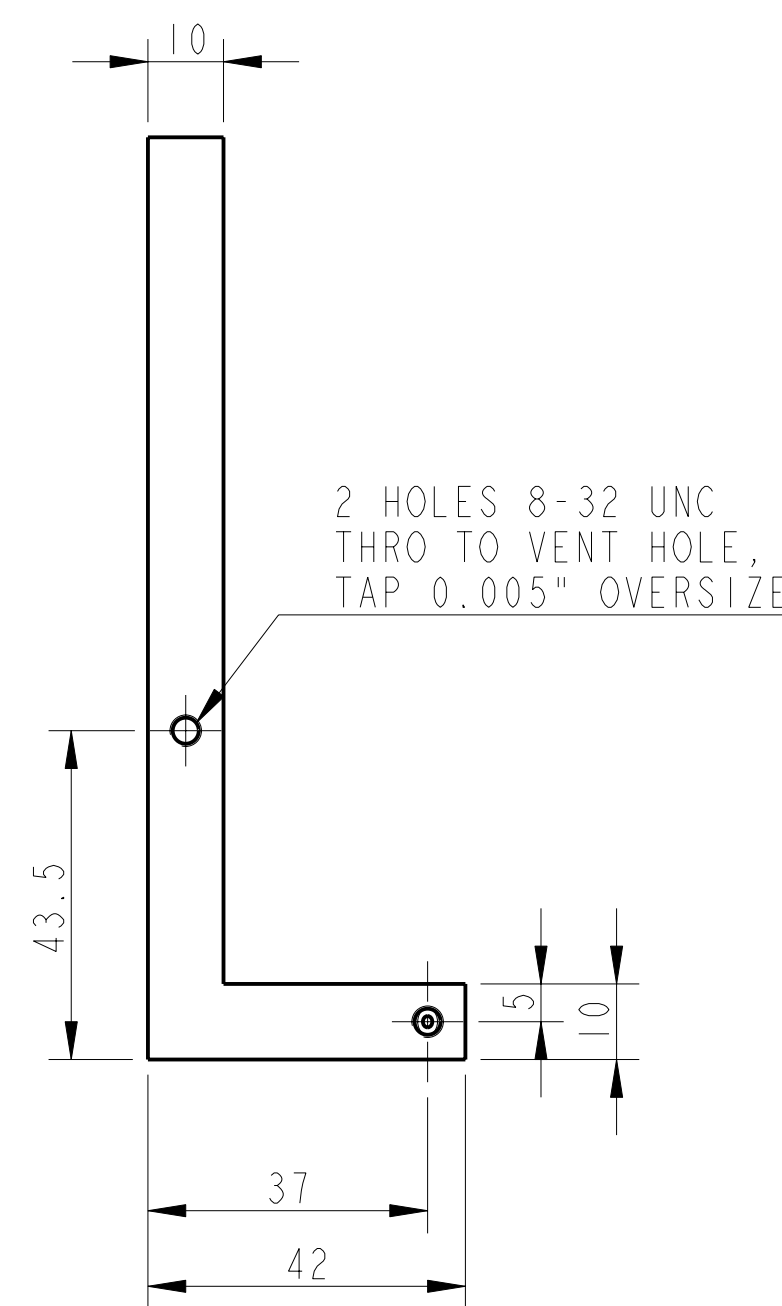
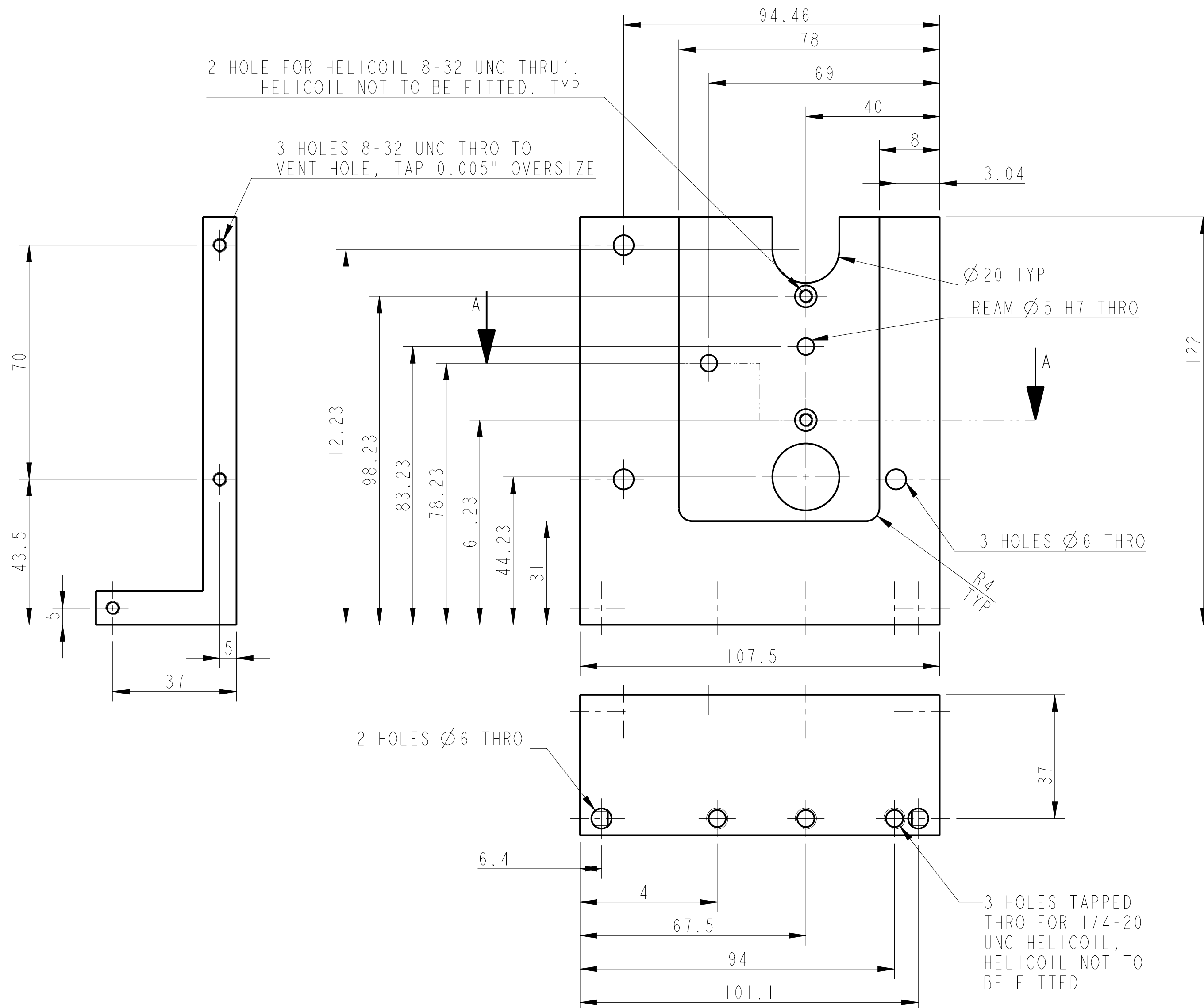


REV.	DATE	DCN #	DRAWING TREE #
B	21/DEC/07	E060260-B	
C	22/JULY/08	E080372	



SECTION A-A



NOTES: (UNLESS OTHERWISE SPECIFIED)

- REMOVE ALL SHARP EDGES, R. 02 MIN.
- DO NOT SCALE FROM DRAWING.
- ALL MACHINING FLUIDS SHALL BE WATER SOLUBLE AND FREE OF SULFUR, CHLORINE AND SILICONE, SUCH AS CINCINNATI MILACRON'S CIMTECH 410 (STAINLESS STEEL).
- SCRIBE, ENGRAVE OR STAMP DRAWING PART NUMBER ON NOTED SURFACE OF PART AND A THREE DIGIT SERIAL NUMBER. SERIAL NUMBERS START AT 001 FOR THE FIRST PART AND PROCEED CONSECUTIVELY. USE .07" HIGH CHARACTERS. EXAMPLE: D020188-001. A VIBRATORY TOOL MAY BE USED.

DIMENSIONS ARE IN mm (INCHES) TOLERANCES:
X.XX ± mm (INCHES)
ANGULAR ± 0.25°

MATERIAL: AL ALLOY 6061

FINISH: CLEAN AND DEGREASED
√μm (μin) Ra = 1.6

NAME	DATE
DRAWN I WILMUT	29/NOV/07
CHECKED AJB	19MAY08
APPROVED AJB	22/JULY/08

SCALE 1:1 PROJECTION

SYSTEM	ADVANCED LIGO
SUB-SYSTEM	SUS
NEXT ASSY	D060454
PART NAME	REACTION CHAIN UIM STOP
DRG. NO.	D070546

REV. C. SHEET 1 OF 1