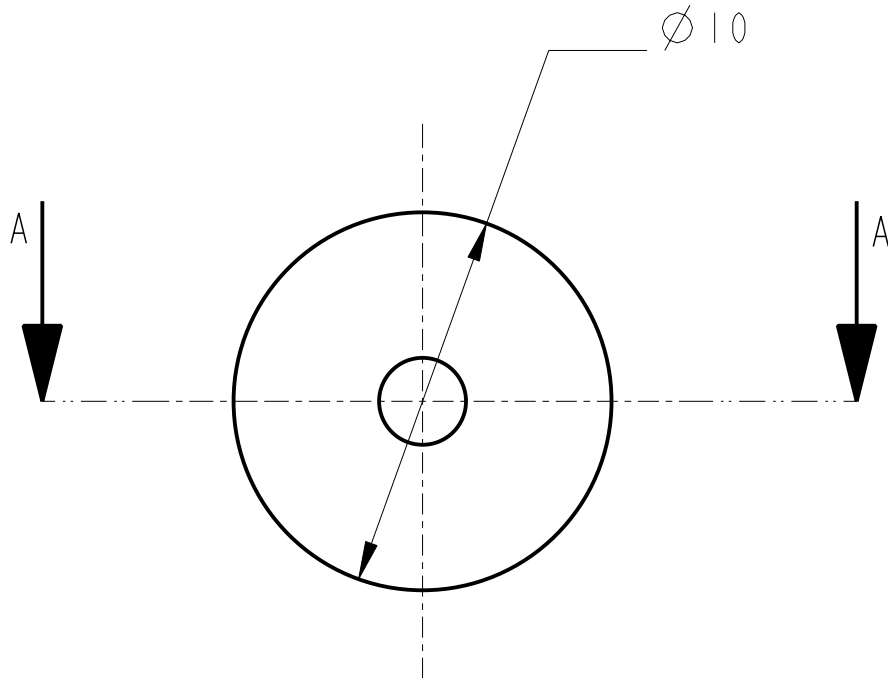


SECTION A-A



ADDITIONAL NOTES:

- PART TO BE INJECTION MOLDED
- FLOUREL COMPOUND TO CONSIST OR
 100 PARTS FLOUREL FC2180 OR FE5641
 20 PARTS MT BLACK (N990)
 3 PARTS MAGLITE (MgO)
 6 PARTS Ca(OH)2
 3 PARTS CaO
- WATER SOLUABLE RELEASE AGENT
 TO BE USED IF REQUIRED
- MOLDED PARTS MUST BE KEPT FREE
 FROM HYDROCARBONS, AND BE HANDLED
 WITH CLEAN TOOLS OR CLEAN NITRILE GLOVES
- FLASH REMOVLE TO BE DONE WITH BLADE
 NOT ABRASIVE
- PARTS TO BE FOIL WRAPPED

NOTES: (UNLESS OTHERWISE SPECIFIED)

- REMOVE ALL SHARP EDGES, R.02 MIN.
- DO NOT SCALE FROM DRAWING.
- ALL MACHINING FLUIDS SHALL BE WATER SOLUBLE AND FREE OF SULFUR, CHLORINE AND SILICONE, SUCH AS CINCINNATI MILACRON'S CIMTECH 410 (STAINLESS STEEL)
- SCRIBE, ENGRAVE OR STAMP DRAWING PARTNUMBER ON NOTED SURFACE OF PART AND A THREE DIGIT SERIAL NUMBER. SERIAL NUMBERS START AT 001 FOR THE FIRST PART AND PROCEED CONSECUTIVELY. USE .07" HIGH CHARACTERS. EXAMPLE: D020188- 001. A VIBRATORY TOOL MAY BE USED.

DIMENSIONS ARE IN mm [INCHES]
 TOLERANCES:

X.XX ±0.2 mm
 ANGULAR ±0.25 °

MATERIAL: FLOUREL
 SEE NOTES

FINISH: AS MOULDED
 √μm [μin] Ra = -----

	NAME	DATE
DRAWN	I WILMUT	11/Dec/06
CHECKED	---	--/--/--
APPROVED	---	--/--/--

 CALIFORNIA INSTITUTE OF TECHNOLOGY
 MASSACHUSETTS INSTITUTE OF TECHNOLOGY
 IGR, GLASGOW UNIVERSITY GEO 600 GROUP
 RUTHERFORD APPLETON LABORATORIES

SYSTEM **ADVANCED LIGO**

SUB-SYSTEM **SUS**

NEXT ASSY **QUAD N-PTYPE LOWER STRUCTURE**

PART NAME **EARTHQUAKE STOP
 PEN RE MASS BUMP STOPS**

SIZE **A** DRG. NO. **D080245**