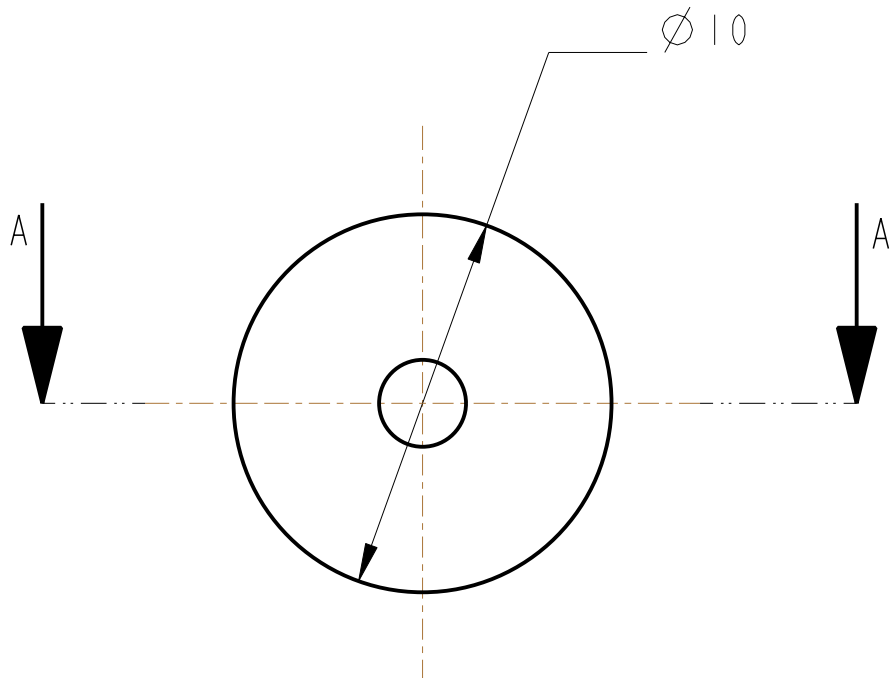


SECTION A-A



## ADDITIONAL NOTES:

- PART TO BE INJECTION MOLDED
- FLOUREL COMPOUND TO CONSIST OR  
100 PARTS FLOUREL FC2180 OR FE5641  
20 PARTS MT BLACK (N990)  
3 PARTS MAGLITE (MgO)  
6 PARTS Ca(OH)<sub>2</sub>  
3 PARTS CaO
- WATER SOLUABLE RELEASE AGENT  
TO BE USED IF REQUIRED
- MOLDED PARTS MUST BE KEPT FREE  
FROM HYDROCARBONS, AND BE HANDLED  
WITH CLEAN TOOLS OR CLEAN NITRILE GLOVES
- FLASH REMOVLE TO BE DONE WITH BLADE  
NOT ABRASIVE
- PARTS TO BE FOIL WRAPPED
- START WITH PART D060546, AND TRIM  
TO LENGTH USING TRIMMING TOOL D080246

## NOTES: (UNLESS OTHERWISE SPECIFIED)

- REMOVE ALL SHARP EDGES,  
R.02 MIN.
- DO NOT SCALE FROM DRAWING.
- ALL MACHINING FLUIDS SHALL BE  
WATER SOLUBLE AND FREE OF  
SULFUR, CHLORINE AND SILICONE,  
SUCH AS CINCINNATI MILACRON'S  
CIMTECH 410 (STAINLESS STEEL)
- SCRIBE, ENGRAVE OR STAMP DRAWING  
PARTNUMBER ON NOTED SURFACE OF  
PART AND A THREE DIGIT SERIAL  
NUMBER. SERIAL NUMBERS START  
AT 001 FOR THE FIRST PART AND  
PROCEED CONSECUTIVELY.  
USE .07" HIGH CHARACTERS.  
EXAMPLE: D020188- 001. A VIBRATORY  
TOOL MAY BE USED.

DIMENSIONS ARE IN mm [INCHES]  
TOLERANCES:X.XX ±0.2 mm  
ANGULAR ±0.25°MATERIAL: FLOUREL  
SEE NOTESFINISH: AS MOULDED  
√μm [μin] Ra = -----

	NAME	DATE
DRAWN	I WILMUT	11/Dec/06
CHECKED	MB	15/MAR/10
APPROVED	JOD	15/MAR/10

CALIFORNIA INSTITUTE OF TECHNOLOGY  
MASSACHUSETTS INSTITUTE OF TECHNOLOGY  
IGR, GLASGOW UNIVERSITY GEO 600 GROUP  
RUTHERFORD APPLETON LABORATORIESSYSTEM **aLIGO**SUB-SYSTEM **SUS**NEXT ASSY **QUAD STOPS**PART NAME **EARTHQUAKE STOP  
PEN RE MASS BUMP STOPS**

SIZE	DRG. NO.	REV
<b>A</b>	<b>D080245</b>	<b>E</b>

SCALE 5:1 PROJECTION: SHEET 1 OF