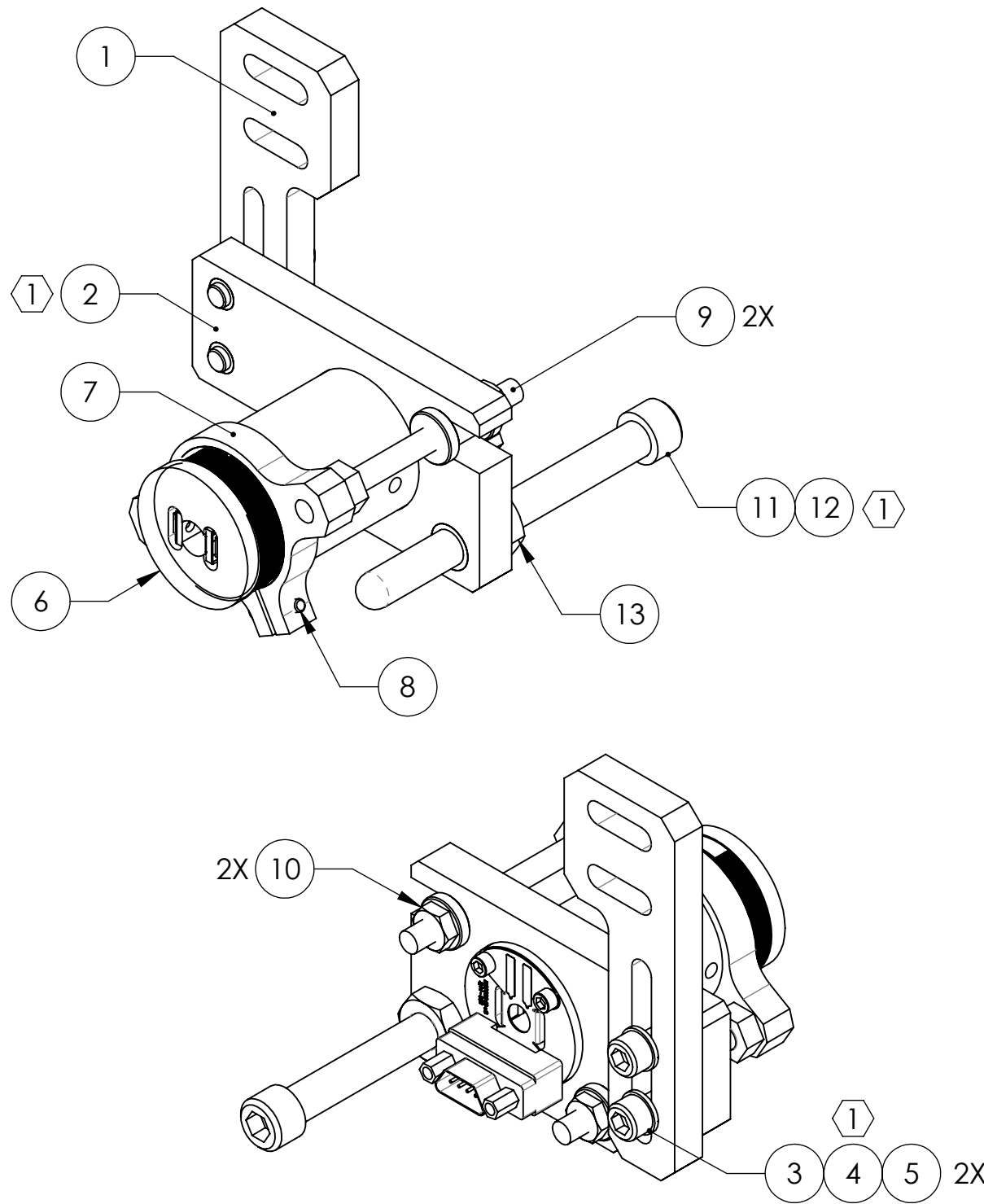


D0901551_Advanced_LIGO_SUS_HLTS_Lower_AOSEM_Alignment_Assembly_Mass_PART PDM REV: V2-001, DRAWING PDM REV: V2-000

REV.	DATE	DCN #	DRAWING TREE #
v1	17 AUG 2009	E0900243	E080191
v2	02 DEC 2009	E0900446	E080191
v3	09 DEC 2010	E1000849	E080191



ITEM NO.	PART NUMBER	DESCRIPTION	MATERIAL	REQ	SPARE	TOTAL
13	-	JAM NUT, 1/4-20	300 SSSL	1	1	2
12	1185-4EN250	HELICOIL, 1/4-20 X 0.25 LONG (1)	NITRONIC 60	1	1	2
11	D030021	SCREW, SOCKET HEAD CAP, 1/4-20 UNC-3A X 2.5 LONG, FULLY THREADED, ROUNDED END	300 SSSL	1	1	2
10	D1002865	ADJUSTMENT NUT, THICK	PEEK	2	0	2
9	D1000659	ADJUSTER SHAFT	304, 316 OR 302 SSSL	2	0	2
8	-	SCREW, SOCKET HEAD CAP, #2-56 UNC-2A X 0.375 LONG	300 SSSL	1	1	2
7	D1002858	AOSEM ADJUSTMENT COLLAR (REVERSE SIDE)	6061-T6 Al	1	0	1
6	D0901065	AOSEM ASSEMBLY	N/A	1	0	1
5	-	WASHER, FLAT, VENTED, #8 (U-C COMPONENTS P/N WFV-08 OR EQUIVALENT)	300 SSSL	2	1	3
4	1185-2EN246	HELICOIL, #8-32 X 0.246 LONG (1)	NITRONIC 60	2	1	3
3	-	SCREW, SOCKET HEAD CAP, #8-32 UNC-2A X 0.625 LONG	300 SSSL	2	1	3
2	D0901492	AOSEM ALIGNMENT BRACKET, INT. MASS (1)	6061-T6 Al	1	0	1
1	D0901493	LOWER AOSEM MOUNTING BRACKET, INT. MASS	6061-T6 Al	1	0	1

PARTS LIST

NOTES AND TOLERANCES: (UNLESS OTHERWISE SPECIFIED)

(1) HELICOILS TO BE INSTALLED INTO ITEM NO. 2 BY LIGO AFTER ALL PARTS ARE CLEANED AND BAKED.

MATERIAL	N/A	FINISH	N/A μinch
----------	-----	--------	-----------

CALIFORNIA INSTITUTE OF TECHNOLOGY MASSACHUSETTS INSTITUTE OF TECHNOLOGY		PART NAME LOWER AOSEM ALIGNMENT ASSY, INT. MASS	
SYSTEM ADVANCED LIGO	SUB-SYSTEM SUS	DESIGNER D. BRIDGES 13 DEC 2010	SIZE DWG. NO. B D0901551
DRAFTER D. BRIDGES 13 DEC 2010	CHECKER B. MOORE 14 DEC 2010	APPROVAL	REV. v3
NEXT ASSY HLTS OVERALL ASSY		SCALE: 1:1	PROJECTION: SHEET 1 OF 1