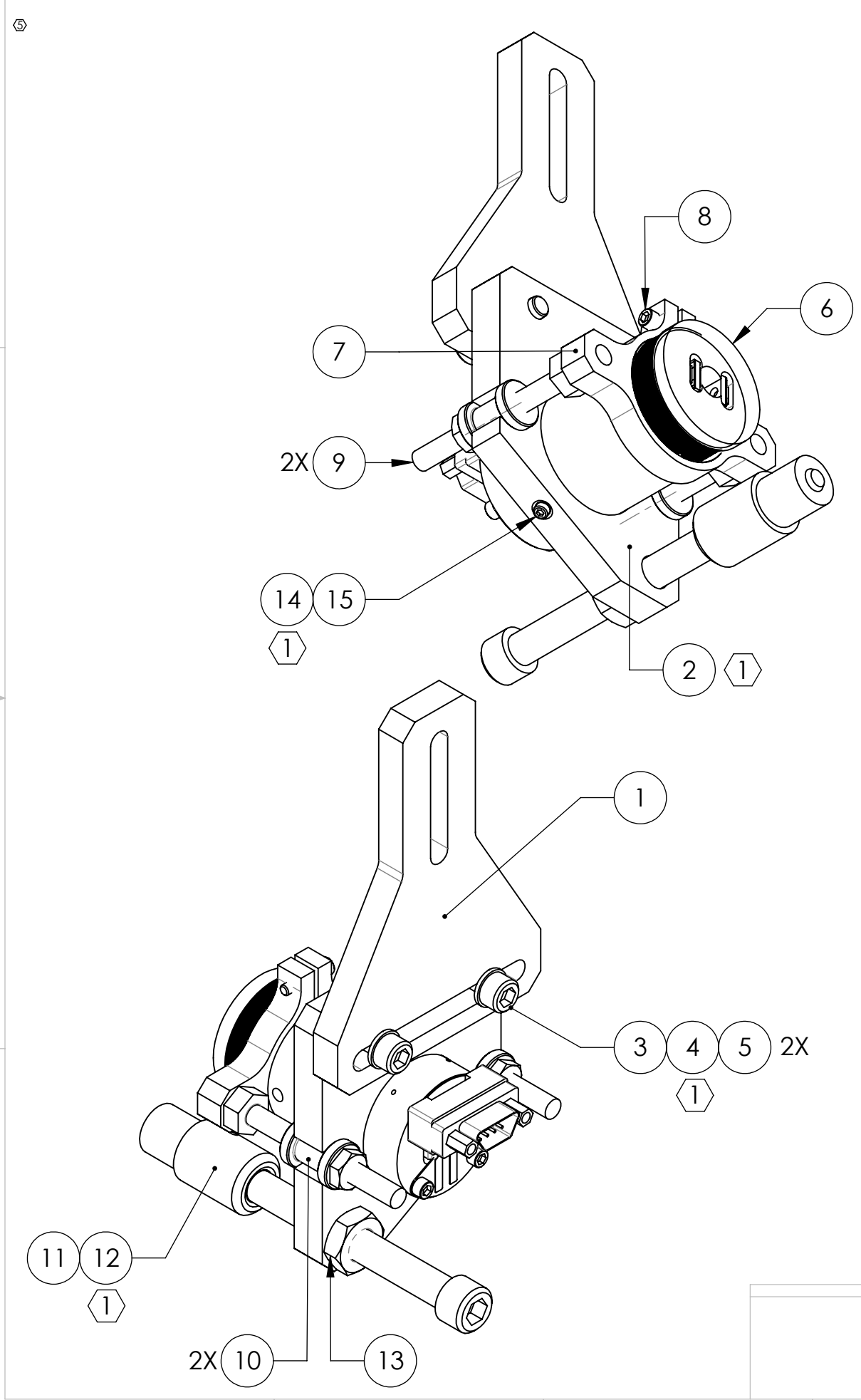


D0901552\_Advanced\_LIGO\_SUS\_HLTS\_Upper\_AOSEM\_Alignment\_Assembly\_Test\_Mass\_PART PDM REV: V3-002\_DRAWING PDM REV: V3

REV.	DATE	DCN #	DRAWING TREE #
v1	17 AUG 2009	E0900243	E080191
v2	02 DEC 2009	E0900446	E080191
v3	09 DEC 2010	E1000849	E080191
v4	05 MAR 2011	E1100228	E080191



ITEM NO.	PART NUMBER	DESCRIPTION	MATERIAL	REQ	SPARE	TOTAL
15	-	SCREW, SOCKET SET, #4-40 UNC-2A X 0.25 LONG, OVAL POINT	300 SSSL	1	1	2
14	1185-04EN168	HELICOIL, #4-40 X 0.168 LONG (1)	NITRONIC 60	1	1	2
13	-	JAM NUT, 1/4-20	300 SSSL	1	1	2
12	1185-4EN250	HELICOIL, 1/4-20 X 0.25 LONG (1)	NITRONIC 60	1	1	2
11	D080725	EARTHQUAKE STOP FOR METAL OR GLASS	N/A	1	0	1
10	D1002865	ADJUSTMENT NUT, THICK	PEEK	2	0	2
9	D1000659	ADJUSTER SHAFT	304, 316 OR 302 SSSL	2	0	2
8	-	SCREW, SOCKET HEAD CAP, #2-56 UNC-2A X 0.375 LONG	300 SSSL	1	1	2
7	D1002858	AOSEM ADJUSTMENT COLLAR (REVERSE SIDE)	6061-T6 Al	1	0	1
6	D0901065	AOSEM ASSEMBLY	N/A	1	0	1
5	-	WASHER, FLAT, VENTED, #8 (U-C COMPONENTS P/N WFV-08 OR EQUIVALENT)	300 SSSL	2	1	3
4	1185-2EN246	HELICOIL, #8-32 X 0.246 LONG (1)	NITRONIC 60	2	1	3
3	-	SCREW, SOCKET HEAD CAP, #8-32 UNC-2A X 0.625 LONG	300 SSSL	2	1	3
2	D0901549	AOSEM ALIGNMENT BRACKET, BOTTOM MASS (1)	6061-T6 Al	1	0	1
1	D0901550	UPPER AOSEM MOUNTING BRACKET, BOTTOM MASS	6061-T6 Al	1	0	1

PARTS LIST

**NOTES AND TOLERANCES: (UNLESS OTHERWISE SPECIFIED)**  
 (1) HELICOILS TO BE INSTALLED INTO ITEM NO. 2 BY LIGO AFTER ALL PARTS ARE CLEANED AND BAKED.

MATERIAL	N/A	FINISH	N/A μinch	CALIFORNIA INSTITUTE OF TECHNOLOGY MASSACHUSETTS INSTITUTE OF TECHNOLOGY	PART NAME UPPER AOSEM ALIGNMENT ASSY, BOTTOM MASS
				SYSTEM ADVANCED LIGO	SUB-SYSTEM SUS
				DESIGNER D. BRIDGES	14 JUN 2011
				DRAFTER D. BRIDGES	15 JUN 2011
				CHECKER B. MOORE	15 JUN 2011
				APPROVAL	SCALE: 1:1 PROJECTION:

NEXT ASSY: HLTS OVERALL ASSY  
 SIZE DWG. NO.: B  
**D0901552**  
 REV: v4  
 SHEET 1 OF 1