

8

7

6

5

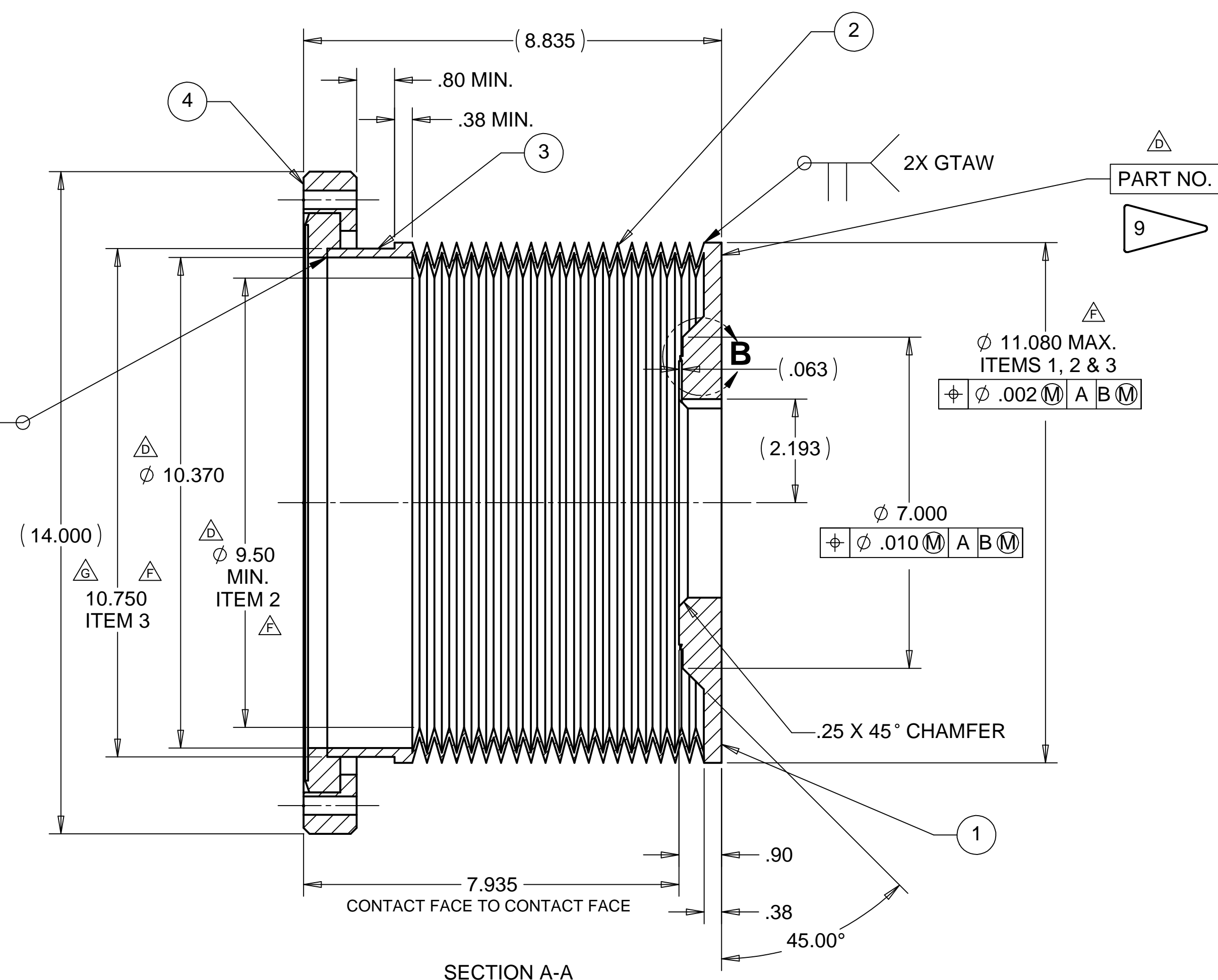
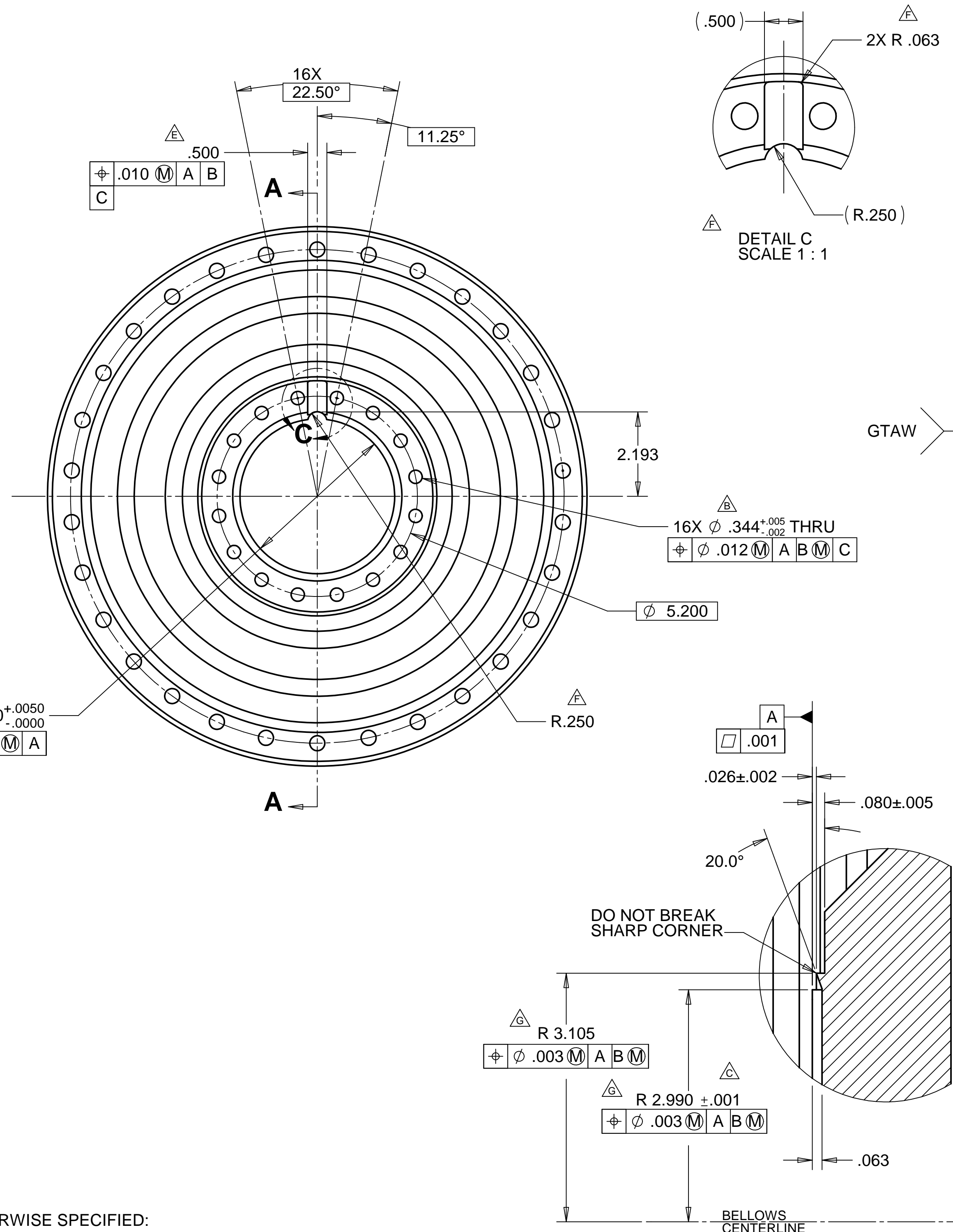
4

3

2

1

Revisions			
REV	DESCRIPTION	DATE	APPROVED
A	SEE ECN# D972611-A FOR CHANGE LIST	11/03/98	T. THOMPSON
B	SEE ECN# D972611-B FOR CHANGE LIST	01/07/98	T. THOMPSON
C	SEE ECN# D972611-C FOR CHANGE LIST	04/15/98	T. THOMPSON
D	SEE ECN# D972611-D FOR CHANGE LIST	04/15/98	T. THOMPSON
E	SEE ECN# D972611-E FOR CHANGE LIST	06/25/98	T. THOMPSON
F	SEE ECN# D972611-F FOR CHANGE LIST	07/24/98	T. THOMPSON
G	SEE ECN# D972611-G FOR CHANGE LIST	09/27/99	T. THOMPSON



WEIGHT: 48.8 lbs.

ITEM NO.	QTY.	DESCRIPTION	MATERIAL
1	1	END FITTING	304 VACUUM REMELT SST
2	1	CAPSULE	AM-350
3	1	FLANGE SUB ASSEMBLY	304 VACUUM REMELT SST
4	1	MDC ROTATABLE DEL-SEAL FLANGE, 14in. NOM. O.D.	

PARTS LIST

UNLESS OTHERWISE SPECIFIED: DIMENSIONS ARE IN INCHES -TOLERANCES-		CAD GENERATED DRAWING, DO NOT MANUALLY UPDATE DO NOT SCALE DRAWING		<p>HYTEC, INC</p> <p>TITLE LIGO HAM EXPANSION BELLOWS</p>	
DECIMALS .XX = +/- .03 .XXX = +/- .010	ANGULAR = +/- .30° SURFACE FINISH = 250	SIGNATURE	DATE		
FINISH ALL MACHINED SURFACES 32 RMS	DESIGNED ROGER L. SMITH	DATE 5-28-97	DRAWN ROGER L. SMITH	DATE 5-28-97	D972611 D 1 of 1
PART NO. D972611-1	CHECKED HARRY SALAZAR	DATE 8-5-97	ENGR. T. THOMPSON	DATE 8-11-97	
	APPROVED T. THOMPSON	DATE 8-11-97		SCALE 1/2	

NOTES: UNLESS OTHERWISE SPECIFIED:

- ALL DIMENSIONS IN INCHES
- DIMENSIONS AND TOLERANCING PER ASME Y14.5M-1994
- SURFACE TEXTURE PER ANSI/ASME B 46.1-1985
- REMOVE ALL BURRS AND BREAK SHARP EDGES TO A MAXIMUM OF .015
- ALL INSIDE CORNERS TO BE .015 RADIUS MAX
- COUNTERSINK 82 DEGREES ALL TAPPED HOLES TO MAJOR DIAMETER
- COUNTERSINK 82 DEGREES APPROXIMATELY .03/.06 DEEP ALL DRILLED HOLES
- PARTS TO BE THOROUGHLY CLEANED TO REMOVE ALL OIL, GREASE, DIRT AND CHIPS
- PART NUMBER (DRAWING NO., DASH NO., REVISION NO., SERIAL NO.) TO BE CLEARLY MARKED ON THE PART OUTSIDE OF A ϕ 10.0.
- ALL FABRICATION, CLEANING, AND HANDLING MAINTAINED TO HYTEC SPECIFICATION: HYTEC-TS-LIGO-04.

8

7

6

5

4

3

2

1