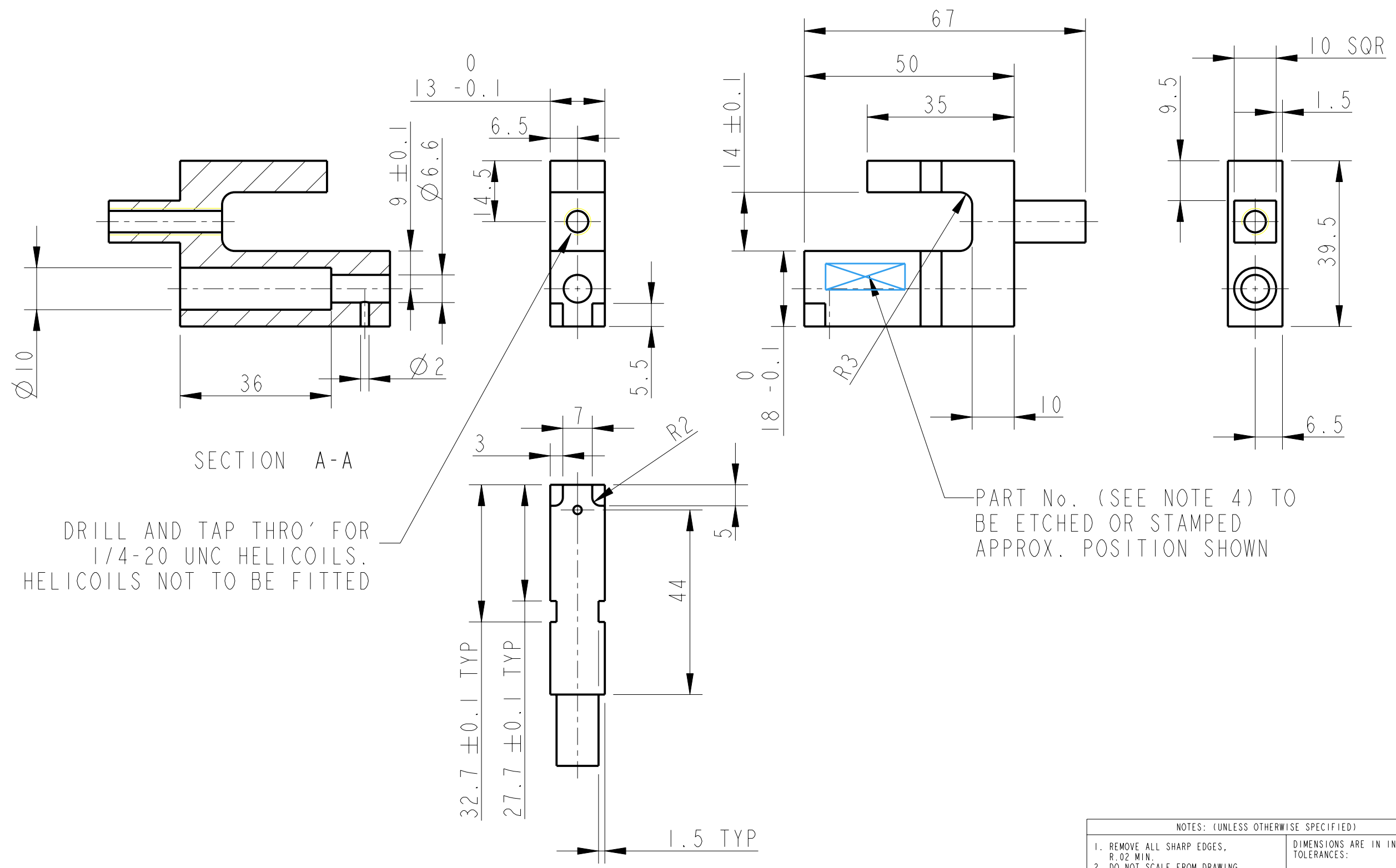


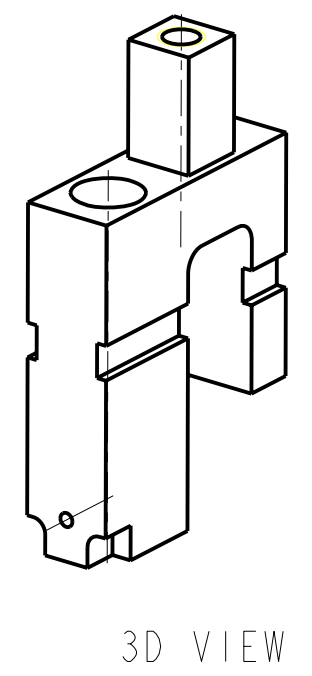
REV.	DATE	DCN #	DRAWING TREE #


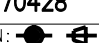


SECTION A-A

DRILL AND TAP THRO' FOR
1/4-20 UNC HELICOILS.
HELICOILS NOT TO BE FITTED

PART No. (SEE NOTE 4) TO
BE ETCHED OR STAMPED
APPROX. POSITION SHOWN



NOTES: (UNLESS OTHERWISE SPECIFIED)			 CALIFORNIA INSTITUTE OF TECHNOLOGY MASSACHUSETTS INSTITUTE OF TECHNOLOGY 1GR, GLASGOW UNIVERSITY GEO 600 GROUP RUTHERFORD APPLETON LABORATORIES	
1. REMOVE ALL SHARP EDGES, R.02 MIN. 2. DO NOT SCALE FROM DRAWING. 3. ALL MACHINING FLUIDS SHALL BE WATER SOLUBLE AND FREE OF SULFUR, CHLORINE AND SILICONE, SUCH AS CINCINNATI MILACRON'S CIMTECH 410 (STAINLESS STEEL) 4. SCRIBE, ENGRAVE OR STAMP DRAWING PARTNUMBER ON NOTED SURFACE OF PART AND A THREE DIGIT SERIAL NUMBER. SERIAL NUMBERS START AT 001 FOR THE FIRST PART AND PROCEED CONSECUTIVELY. USE .07" HIGH CHARACTERS. EXAMPLE: D020188- 001. A VIBRATORY TOOL MAY BE USED.	DIMENSIONS ARE IN INCHES [mm]		SYSTEM ADVANCED LIGO	
	X.XX ± 0.2		SUB-SYSTEM SUS	
	ANGULAR ±0.25 °		NEXT ASSY TOP MASS N-P TYPE	
	MATERIAL: AL ALLOY 5083		PART NAME STOP BRIDGE BS TOP MASS	
FINISH: CLEAN, GREASE FREE √μm [μin] Ra = 1.6		DRAWN: J'OD 27/OCT/07		SIZE B
CHECKED: J'OD JAN 08		APPROVED: IW JAN 08		DRG. NO. D070428
SCALE 1:1		PROJECTION: 		SHEET 1 OF 1