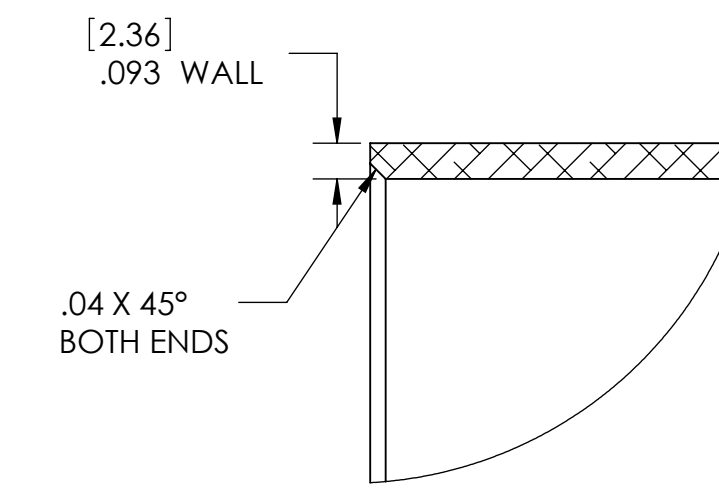
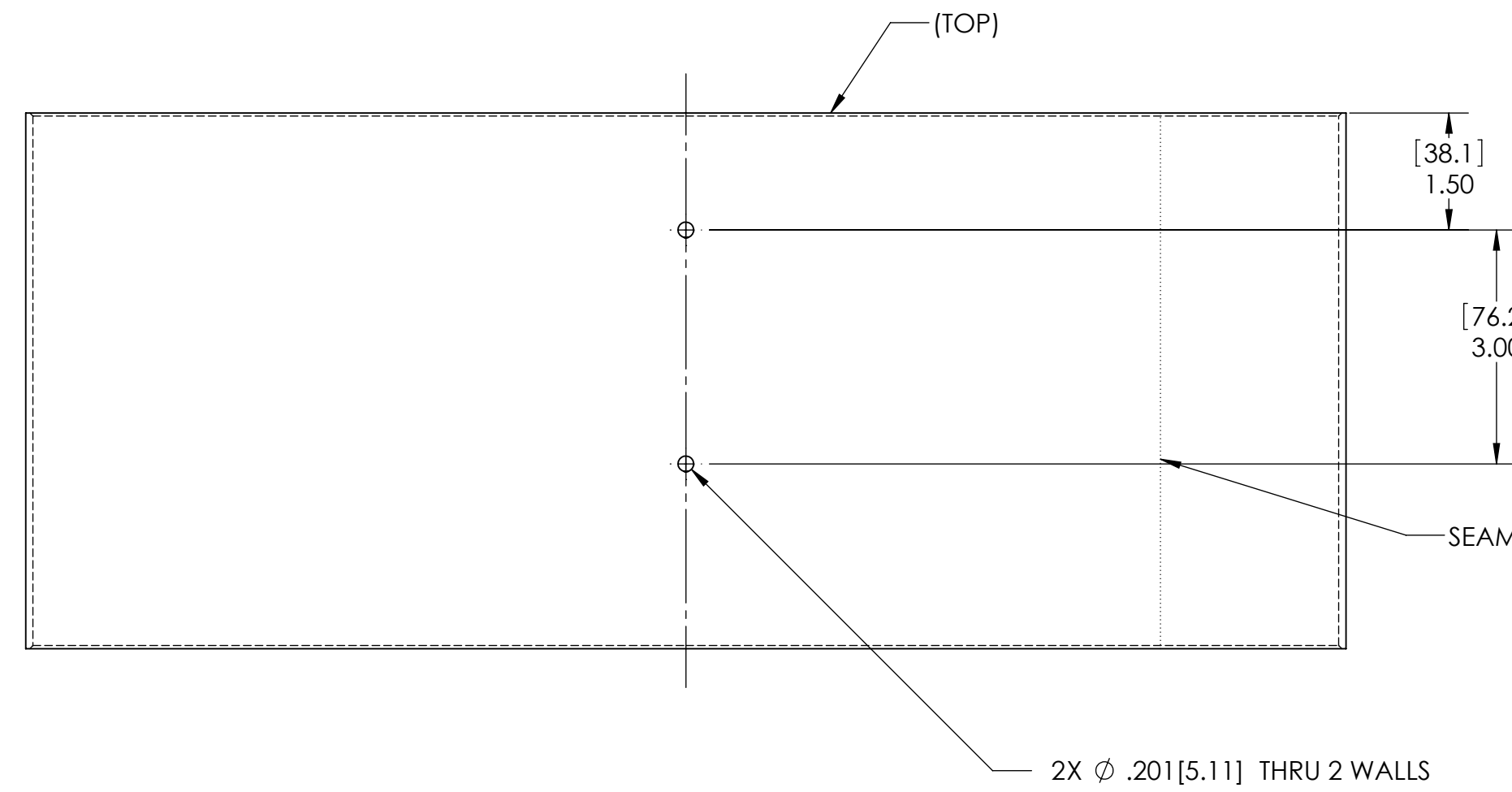


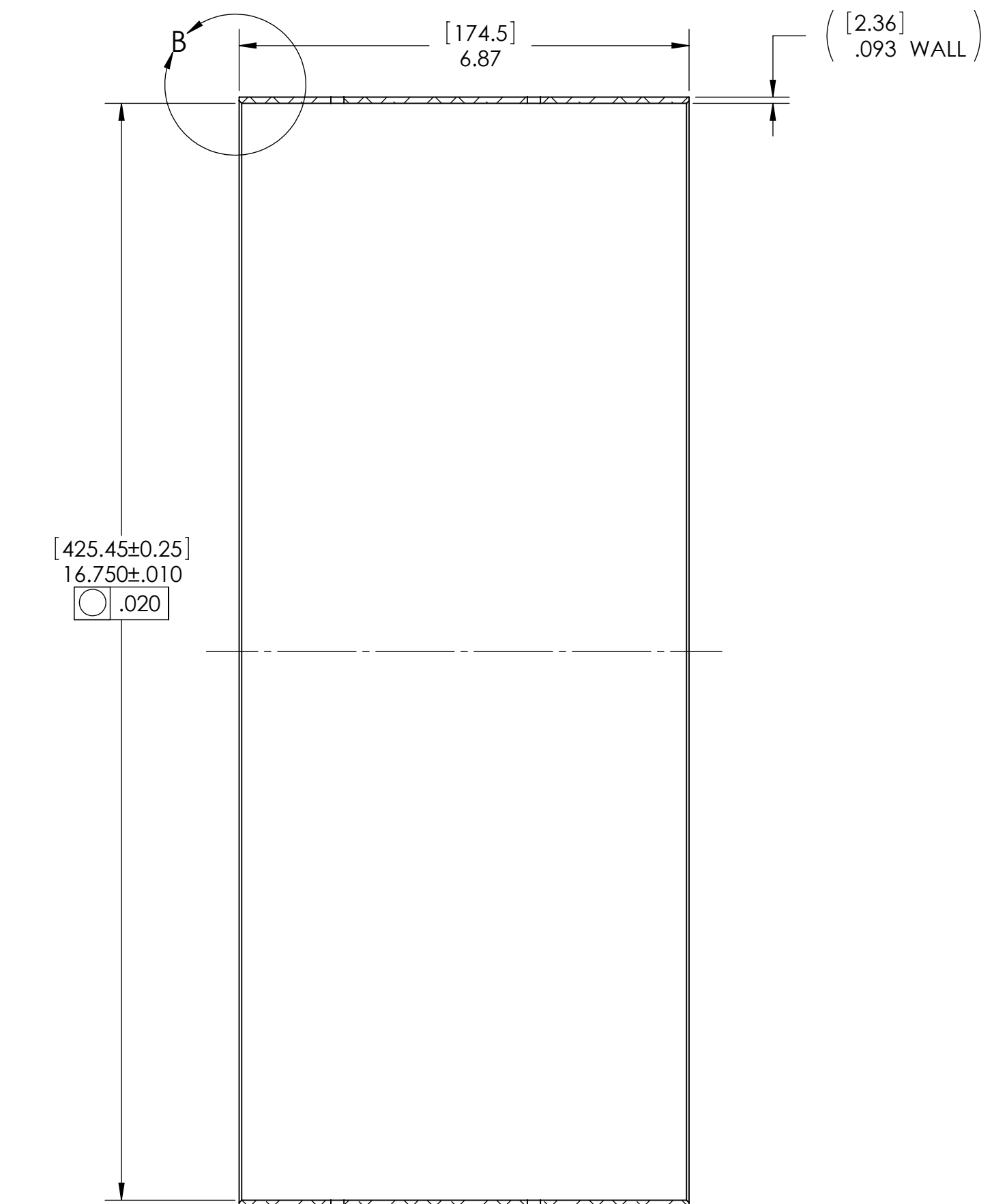
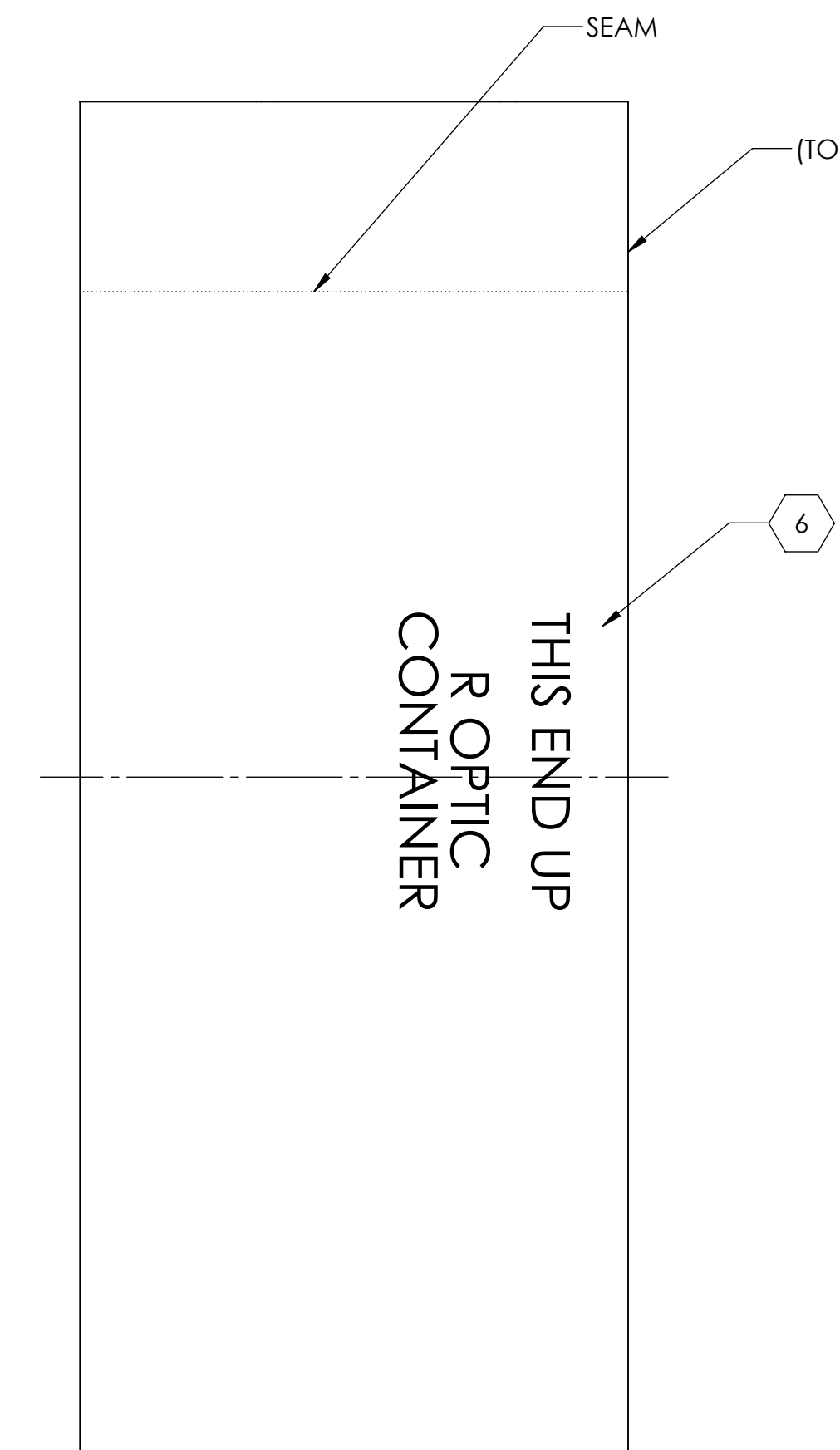
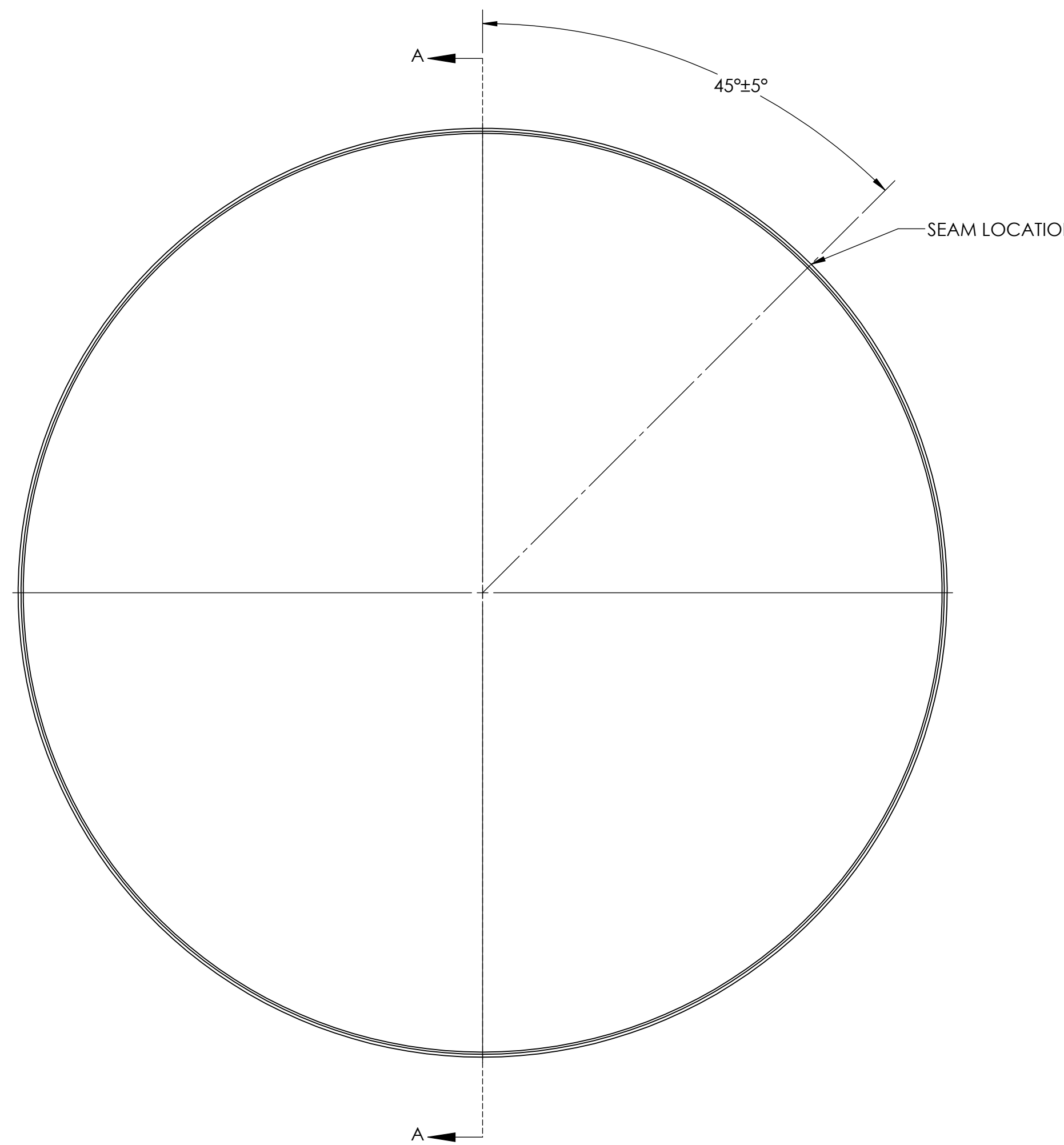
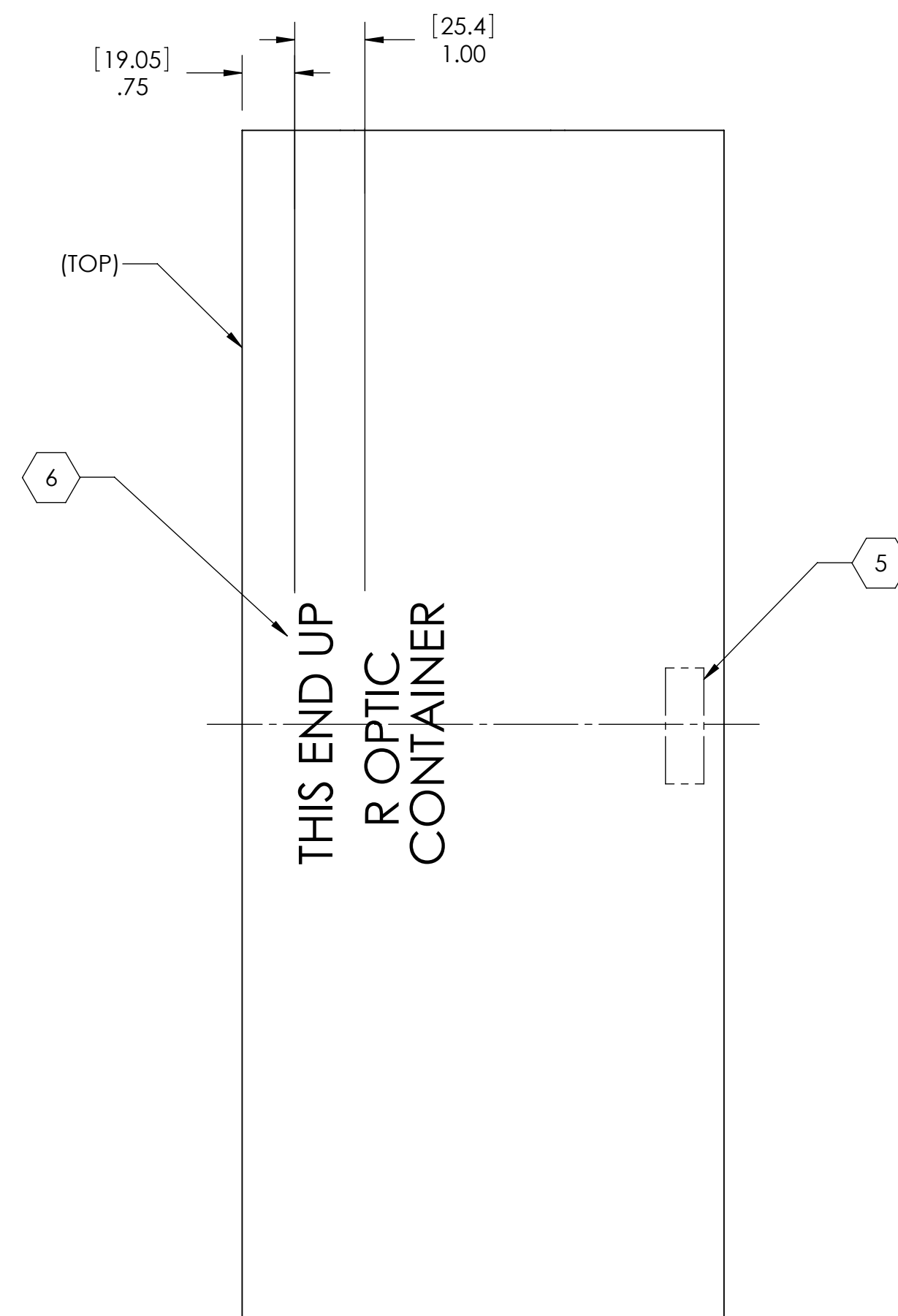
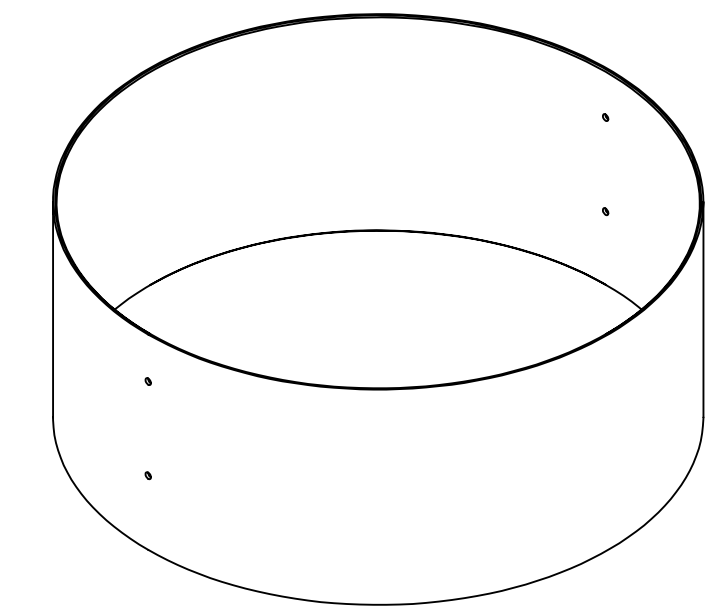
NOTES CONTINUED:
 ⑤ SCRIBE, ENGRAVE, OR MECHANICALLY STAMP (NO INKS OR DYES) DRAWING PART NUMBER AND REVISION ON NOTED SURFACE FOLLOWED ON THE NEXT LINE BY A THREE DIGIT SERIAL NUMBER. SERIAL NUMBERS START AT 001 FOR THE FIRST ARTICLE AND PROCEED CONSECUTIVELY. USE .07" HIGH CHARACTERS. EXAMPLE: DXXXXXX-VY, S/N 001. A VIBRATORY TOOL MAY BE USED.

④ SCRIBE, ENGRAVE, OR MECHANICALLY STAMP TEXT (NO INKS OR DYES) APPROX. WHERE SHOWN. LETTERING APPROX. .50 HIGH.

REV.	DATE	DCN #	DRAWING TREE #
v1	21 OCT 2009	E0900366	



DETAIL B
SCALE 2 : 1



SECTION A-A

NOTES AND TOLERANCES: (UNLESS OTHERWISE SPECIFIED)	
DIMENSIONS ARE IN INCHES [MM]	
TOLERANCES: .XX ± .01 .XXX ± .005	
ANGULAR ± 0.5°	
MATERIAL	304 S316L ROLLED AND FUSION WELDED
FINISH	ELECTROPOLISH

CALIFORNIA INSTITUTE OF TECHNOLOGY MASSACHUSETTS INSTITUTE OF TECHNOLOGY	
SYSTEM	ADVANCED LIGO
SUB-SYSTEM	COC
NEXT ASSY	D0902138

PART NAME			
OUTER SLEEVE, R OPTIC, COC CONTAINER			
DESIGNER	K. BUCKLAND	23 SEPT 2009	SIZE DWG. NO.
DRAFTER	K. BUCKLAND	23 SEPT 2009	D D0902144
CHECKER	K. MAILAND	8 OCT 2009	
APPROVAL	C. TORRIE	8 OCT 2009	REV. v1
SCALE: 1:2		PROJECTION:	SHEET 1 OF 1

D0902144 OUTER SLEEVE, R OPTIC, COC CONTAINER, ADVANCED LIGO, PART FDM REV: X-004, DRAWING FDM REV: X-009