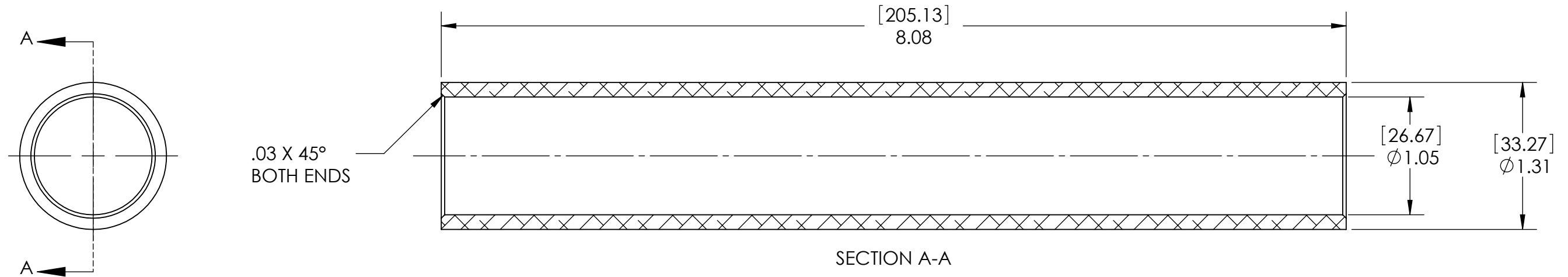


D0902152 SHIPPING SLEEVE, ETM, COC CONTAINER, ADVANCED LIGO, PART PDM REV: X-001, DRAWING PDM REV: X-002

8 7 6 5 4 3 2 1

NOTES CONTINUED:
 ⑤ BAG ALL ITEMS AND MARK OR TAG EACH BAG WITH DRAWING NUMBER, REVISION, AND QUANTITY. EXAMPLE: DXXXXXX-VY, QTY: TBD
 ⑥ CAN BE MADE FROM McMASTER #4481T113 TUBING

REV.	DATE	DCN #	DRAWING TREE #
v1	21 OCT 2009	E0900367	



NOTES AND TOLERANCES: (UNLESS OTHERWISE SPECIFIED)	
DIMENSIONS ARE IN INCHES [MM]	
TOLERANCES: .XX ± .01 .XXX ± .005 ANGULAR ± 0.5°	
1. INTERPRET DRAWING PER ASME Y14.5-1994. 2. REMOVE ALL SHARP EDGES, R.02 MIN. 3. DO NOT SCALE FROM DRAWING. 4. ALL MACHINING FLUIDS MUST BE FULLY SYNTHETIC, FULLY WATER SOLUBLE AND FREE OF SULFUR, SILICONE, AND CHLORINE.	
MATERIAL	6061-T6 Al
FINISH	63 µinch

CALIFORNIA INSTITUTE OF TECHNOLOGY MASSACHUSETTS INSTITUTE OF TECHNOLOGY		PART NAME SHIPPING SLEEVE, ETM, COC CONTAINER	
SYSTEM	ADVANCED LIGO	SUB-SYSTEM	COC
DESIGNER	K. BUCKLAND	29 SEPT 2009	SIZE DWG. NO.
DRAFTER	K. BUCKLAND	29 SEPT 2009	B
CHECKER	K. MAILAND	21 OCT 2009	D0902152
APPROVAL	C. TORRIE	21 OCT 2009	REV. v1
NEXT ASSY D0902146		SCALE: 1:1	PROJECTION:
		SHEET 1 OF 1	

8 7 6 5 4 3 2 1