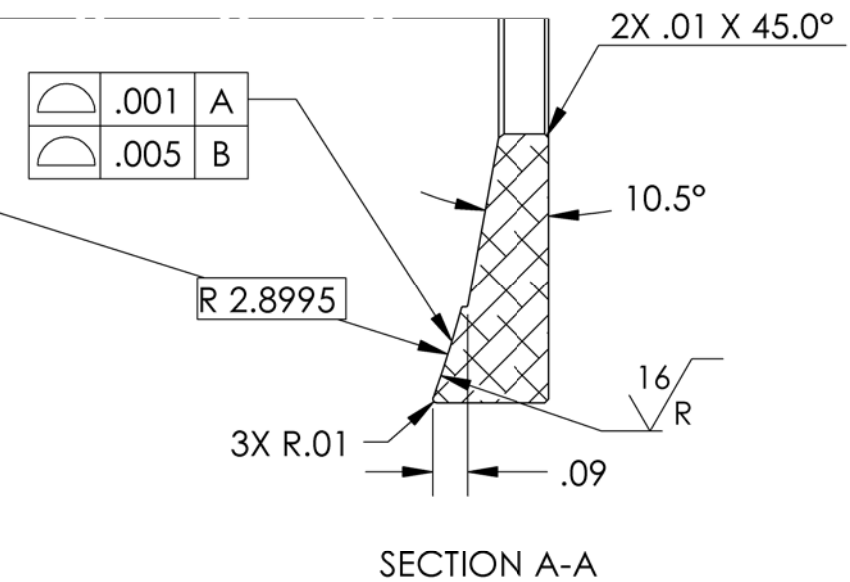
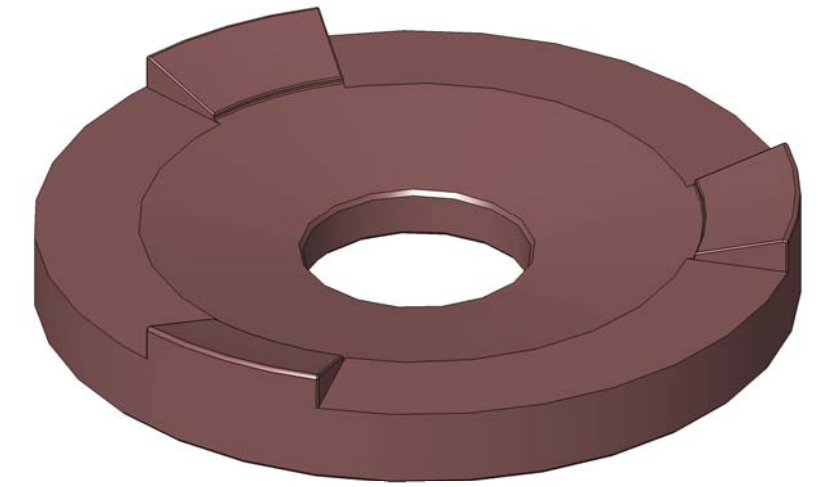
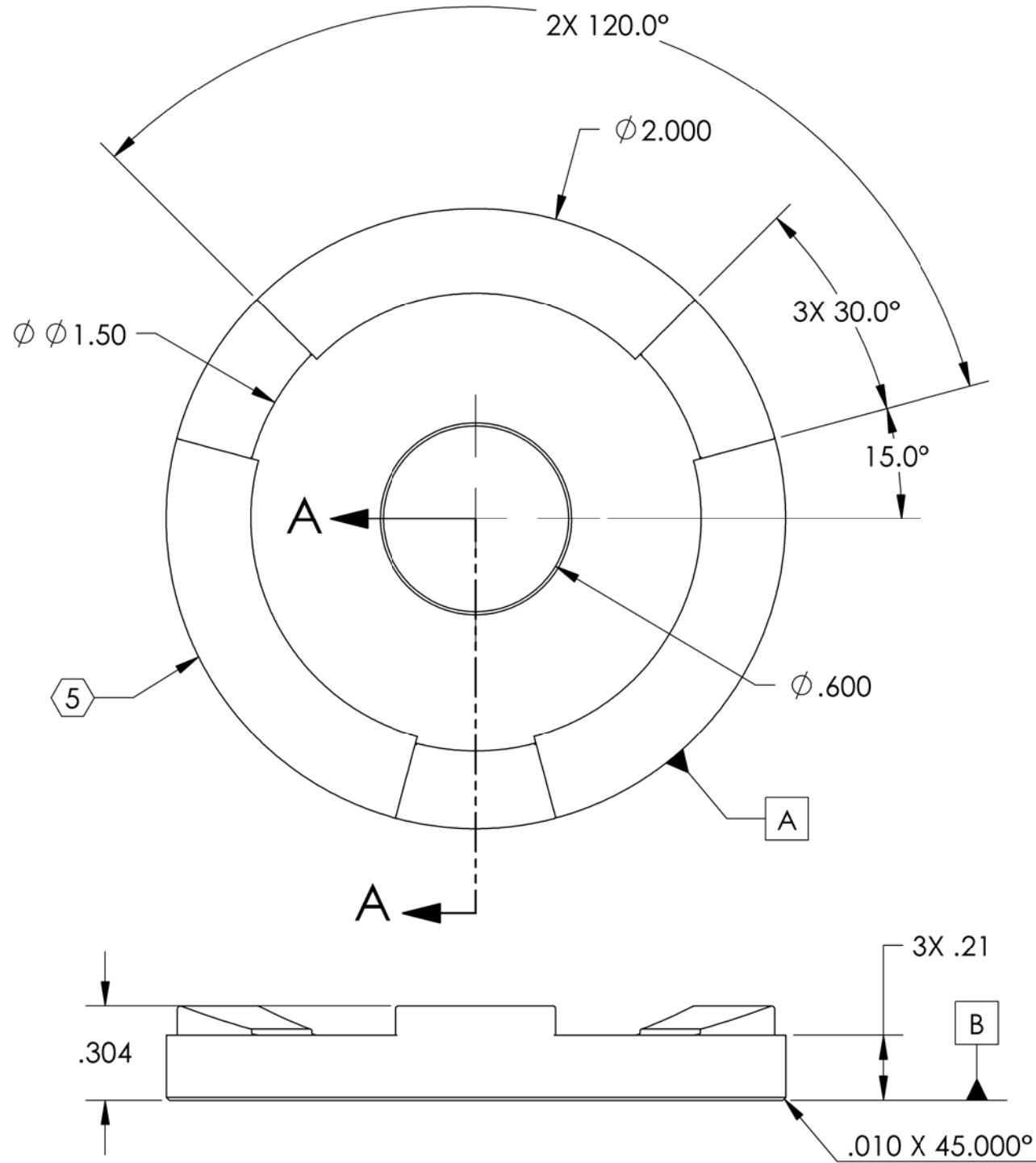


D0902156 Spherical Washer, 2 in OD Concave, aLIGO BSC ISI, PART PDM REV: X-006, DRAWING PDM REV: X-004

- NOTES CONTINUED:**
- 5. SCRIBE, ENGRAVE, OR MECHANICALLY STAMP (NO INKS OR DYES) DRAWING PART NUMBER, REVISION (AND VARIANT OR "TYPE" IF APPLICABLE ON NOTED SURFACE OF PART FOLLOWED ON THE NEXT LINE WITH A THREE DIGIT SERIAL NUMBER. SERIAL NUMBERS START AT 001 FOR THE FIRST ARTICLE AND PROCEED CONSECUTIVELY. USE MINIMUM 0.12 HIGH CHARACTERS, UNLESS THE SIZE OF THE PART DICTATES SMALLER CHARACTERS. A VIBRATORY TOOL MAY BE USED.
EXAMPLE DXXXXXX-VY, TYPE-XX, S/N XXX.
 - 6. APPROXIMATE WEIGHT = 0.075 LB.
 - 7. MACHINE ALL SURFACES TO REMOVE OXIDES AND MILL FINISH. USE OF ABRASIVE REMOVAL TECHNIQUES IS NOT ALLOWED.
 - 8. ALL PARTS SHALL BE MANUFACTURED IN ACCORDANCE WITH LIGO SPECIFICATION E0900364.
 - 9. FINISH: ELECTROPOLISH ALL DIMS APPLY AFTER FINISHING.

REV.	DATE	DCN #	DRAWING TREE #
v1	19 Mar. 2010	E1000049	E1000025



NOTES AND TOLERANCES: (UNLESS OTHERWISE SPECIFIED)				LIGO CALIFORNIA INSTITUTE OF TECHNOLOGY MASSACHUSETTS INSTITUTE OF TECHNOLOGY		PART NAME						
DIMENSIONS ARE IN INCHES				1. INTERPRET DRAWING PER ASME Y14.5-1994, 2. BREAK ALL EDGES AND CORNERS $.03 X 45^\circ$.		SPHERICAL WASHER, 2 IN. OD CONCAVE, aLIGO BSC ISI						
TOLERANCES: .XX $\pm .015$.XXX $\pm .005$				3. DO NOT SCALE FROM DRAWING.		SYSTEM	SUB-SYSTEM	DESIGNER	DATE	SIZE	DWG. NO.	REV.
ANGULAR $\pm .5^\circ$				4. ALL MACHINING FLUIDS MUST BE FULLY SYNTHETIC, FULLY WATER SOLUBLE AND FREE OF SULFUR, SILICONE, AND CHLORINE.		ADVANCED LIGO	SEI	S.BARNUM	19 Mar. 2010	B	D0902156	v1
MATERIAL				FINISH		NEXT ASSY		CHECKER	DATE	SCALE	PROJECTION	SHEET 1 OF 1
304 SSSL				32 μ inch		D0902530, D0902531		F.MATICHARD	19 Mar. 2010	2:1		
								APPROVAL	DATE			
								K.MASON	19 Mar. 2010			