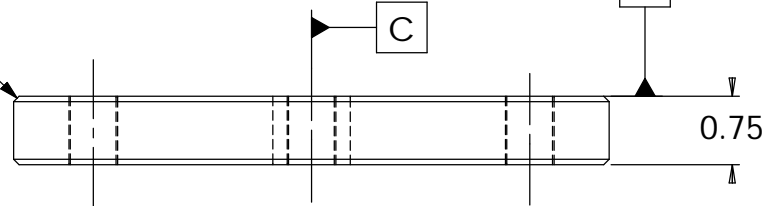


REVISIONS				
REV.	DCN	DESCRIPTION	DATE	APPR.

2X
.06 X 45°

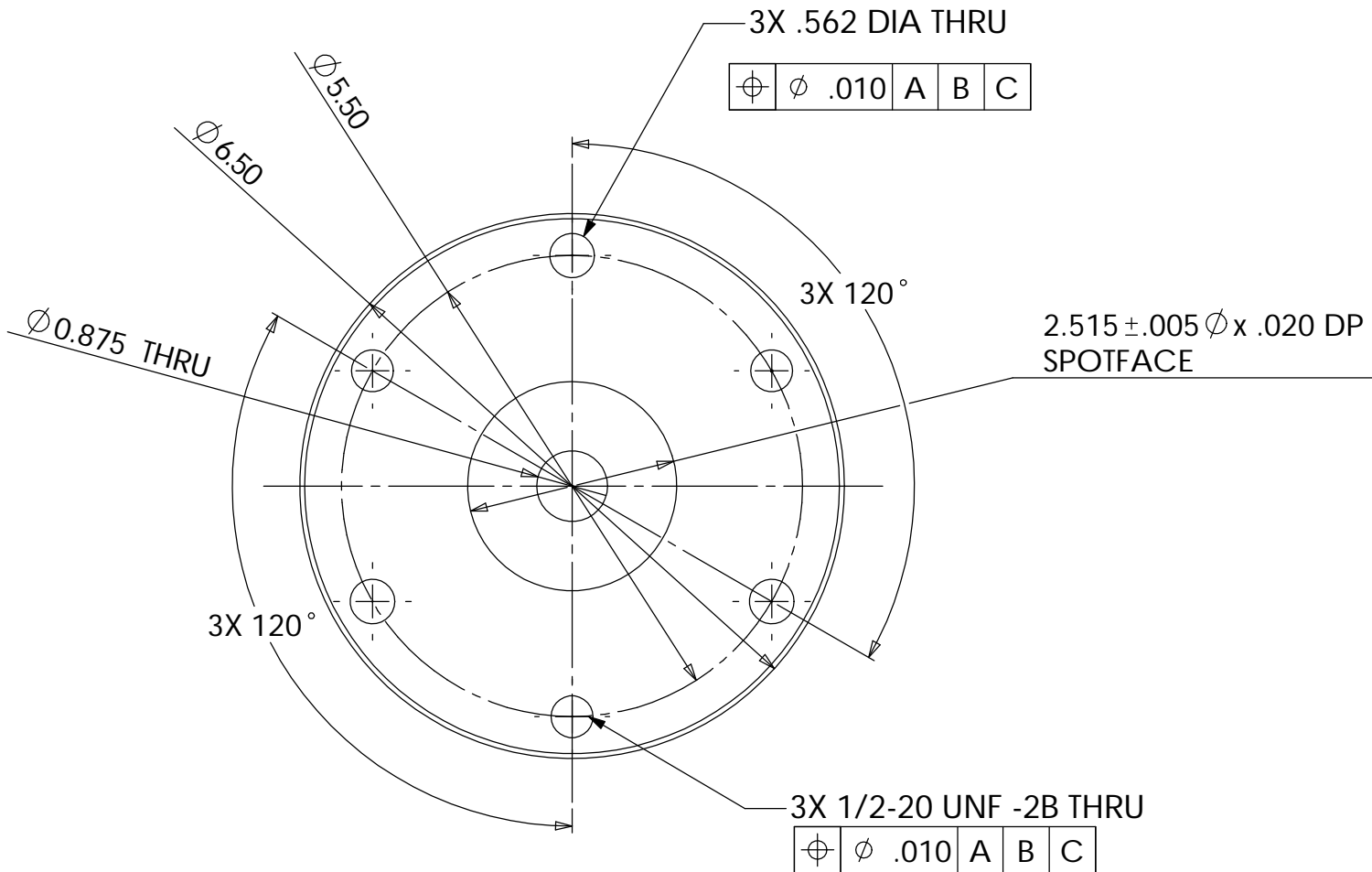


A

0.75

3X .562 DIA THRU

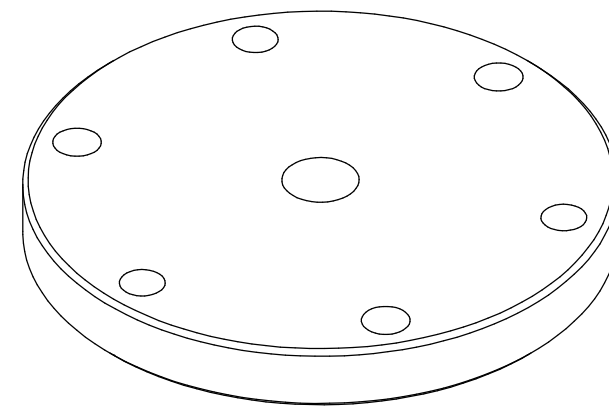
\varnothing	\varnothing	.010	A	B	C
---------------	---------------	------	---	---	---



2.515 ± .005 \varnothing x .020 DP
SPOTFACE

3X 1/2-20 UNF -2B THRU

\varnothing	\varnothing	.010	A	B	C
---------------	---------------	------	---	---	---



- NOTES: UNLESS OTHERWISE SPECIFIED
1. REMOVE ALL BURRS AND BREAK SHARP EDGES TO A MAXIMUM OF .015
 2. PART NUMBER (DRAWING NO., DASH NO., REVISION NO., SERIAL NO.) TO BE CLEARLY MARKED ON THE PART ITSELF
 3. PAINT:
ALL VISIBLE SURFACES
MEDIUM BLUE SHERWIN WILLIAMS (POLANE (R) T-PLUS POLYURETHANE ENAMEL) #SW-F63TX-L-2822-5864
PRIME WITH SHERWIN WILLIAMS INDUSTRIAL WASH PRIMER P60G2
 4. BOTH TAPPED AND THRU HOLES WILL BE PLUGGED DURING APPLICATION.
MASK 2.415 DIA SPOTFACE

UNLESS OTHERWISE SPECIFIED
DIMENSIONS ARE IN INCHES
TOLERANCES ARE:
DECIMALS ANGLES
.X±.06
.XX±.01
.XXX±.005



CALIFORNIA INSTITUTE OF TECHNOLOGY
MASSACHUSETTS INSTITUTE OF TECHNOLOGY

MATERIAL	1018 CRS	APPROVALS	DATE	SPRING MOUNTING PLATE PRE- ISOLATOR
FINISH	SEE NOTE 5	DRAWN	1/3/02	
		CHECKED	1/3/02	
		K. MASON		
	DO NOT SCALE DRAWING	SCALE	1:2	DWG. NO. D020002A-D
		SIZE	B	CAD FILE: D020002-A.SLDRW
				SHEET 1 OF 1

REV. A