

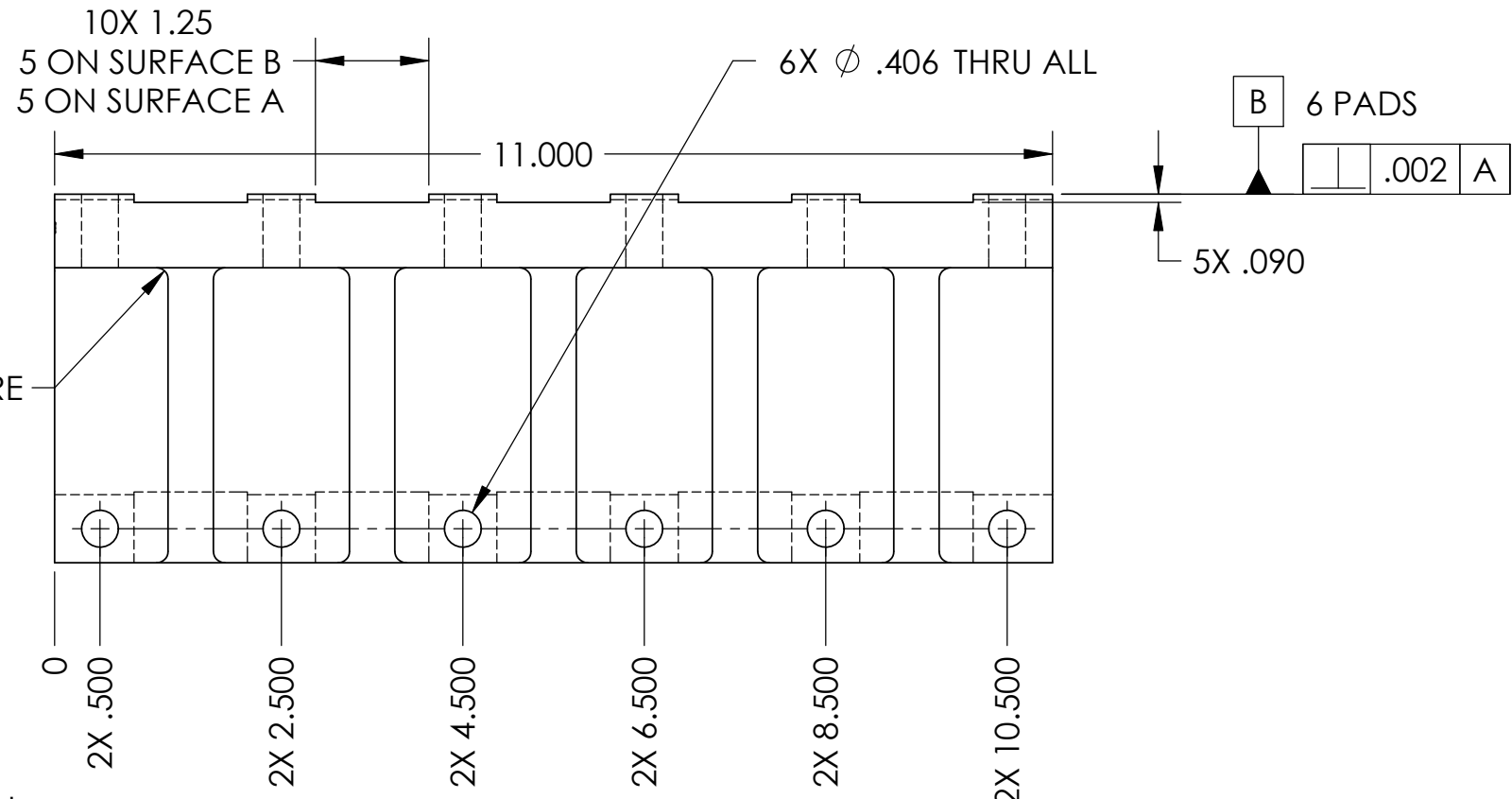
D0902443, Back Ribs, Stage 1, BSC ISI, PART PDM REV: X-009, DRAWING PDM REV: X-007

NOTES CONTINUED:
 5. SCRIBE, ENGRAVE, OR MECHANICALLY STAMP (NO INKS OR DYES) DRAWING PART NUMBER, REVISION (AND VARIANT OR "TYPE" IF APPLICABLE ON NOTED SURFACE OF PART FOLLOWED ON THE NEXT LINE WITH A THREE DIGIT SERIAL NUMBER. SERIAL NUMBERS START AT 001 FOR THE FIRST ARTICLE AND PROCEED CONSECUTIVELY. USE MINIMUM 0.12 HIGH CHARACTERS, UNLESS THE SIZE OF THE PART DICTATES SMALLER CHARACTERS. A VIBRATORY TOOL MAY BE USED. EXAMPLE DXXXXXX-VY, TYPE-XX, S/N XXX.
 6. APPROXIMATE WEIGHT = 3.9 LB.
 7. MACHINE ALL SURFACES TO REMOVE OXIDES AND MILL FINISH. USE OF ABRASIVE REMOVAL TECHNIQUES IS NOT ALLOWED.
 8. ALL PARTS SHALL BE MANUFACTURED IN ACCORDANCE WITH LIGO SPECIFICATION E0900364.

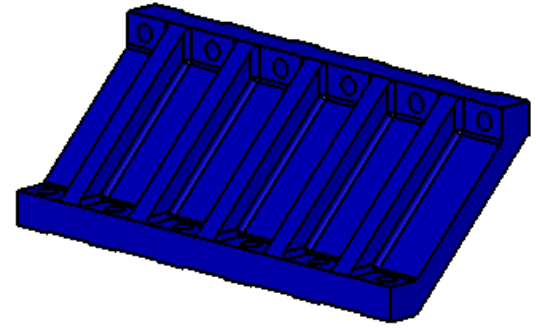
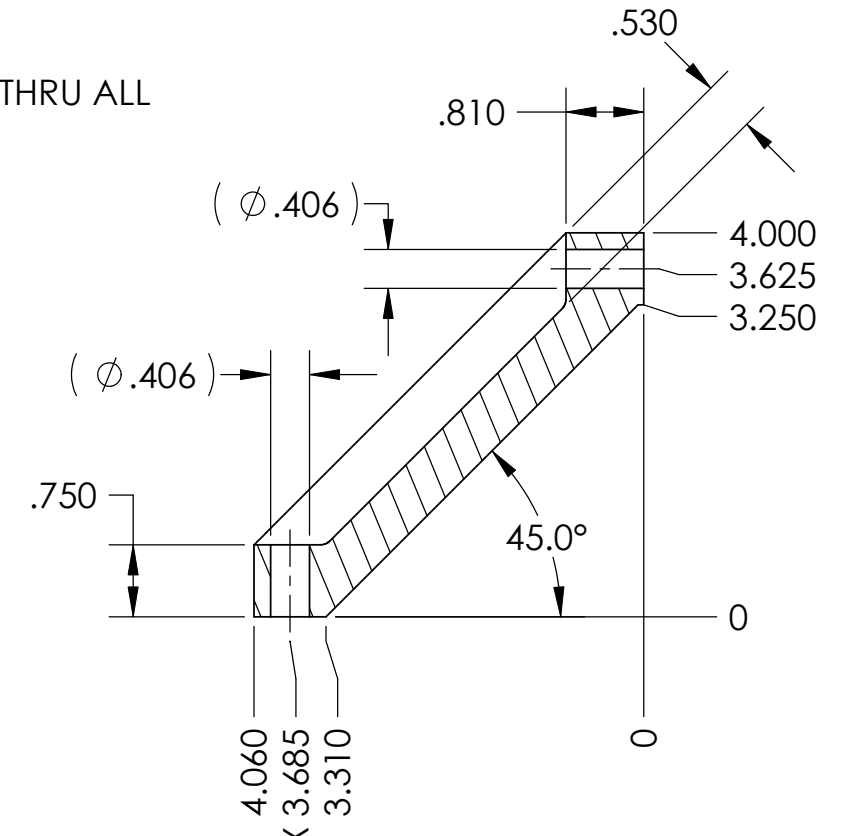
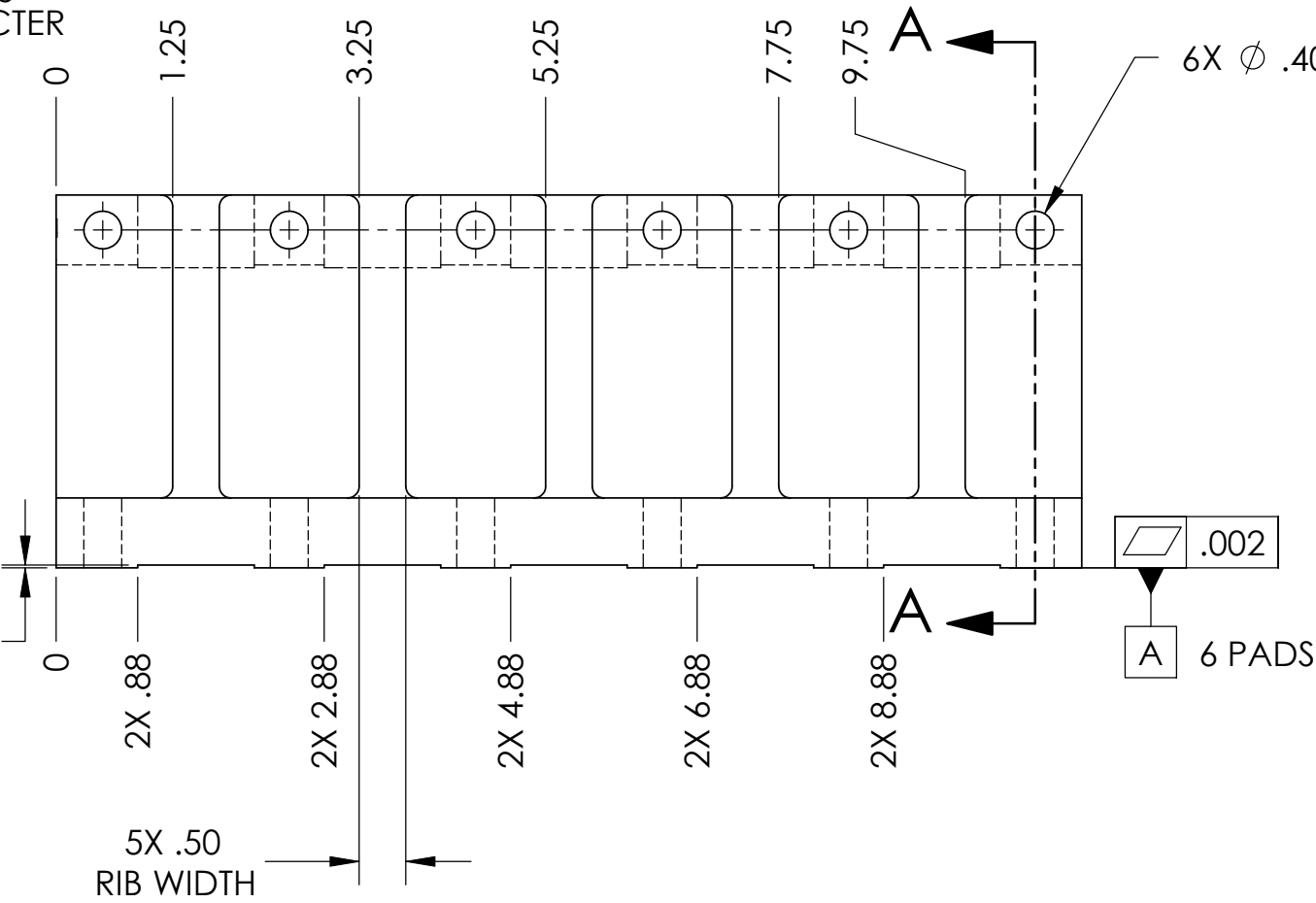
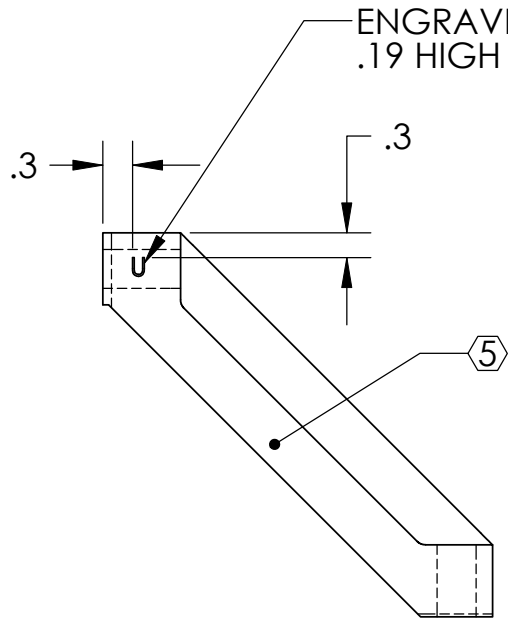
REV.	DATE	DCN #	DRAWING TREE #
v1	12 Mar. 2010	E0900495	E1000025

D
C
B
A

D
C
B
A



6X R.125
AROUND ENTIRE
PROFILE



NOTES AND TOLERANCES: (UNLESS OTHERWISE SPECIFIED)				LIGO CALIFORNIA INSTITUTE OF TECHNOLOGY MASSACHUSETTS INSTITUTE OF TECHNOLOGY		PART NAME	
DIMENSIONS ARE IN INCHES				ADVANCED LIGO		BACK RIBS, STAGE 1, αLIGO BSC ISI	
TOLERANCES: .XX ± .015 .XXX ± .005				SEI		DESIGNER	F.MATICHARD 15 Jan. 2010
ANGULAR ± .5°				NEXT ASSY		DRAWER	M.HILLARD 15 Jan. 2010
MATERIAL		FINISH		SCALE		DWG. NO.	
6061-T6 Al		63 μinch		1:2		B D0902443	
				PROJECTION		REV.	
						v1	
				SHEET 1 OF 1			

8 7 6 5 4 3 2 1