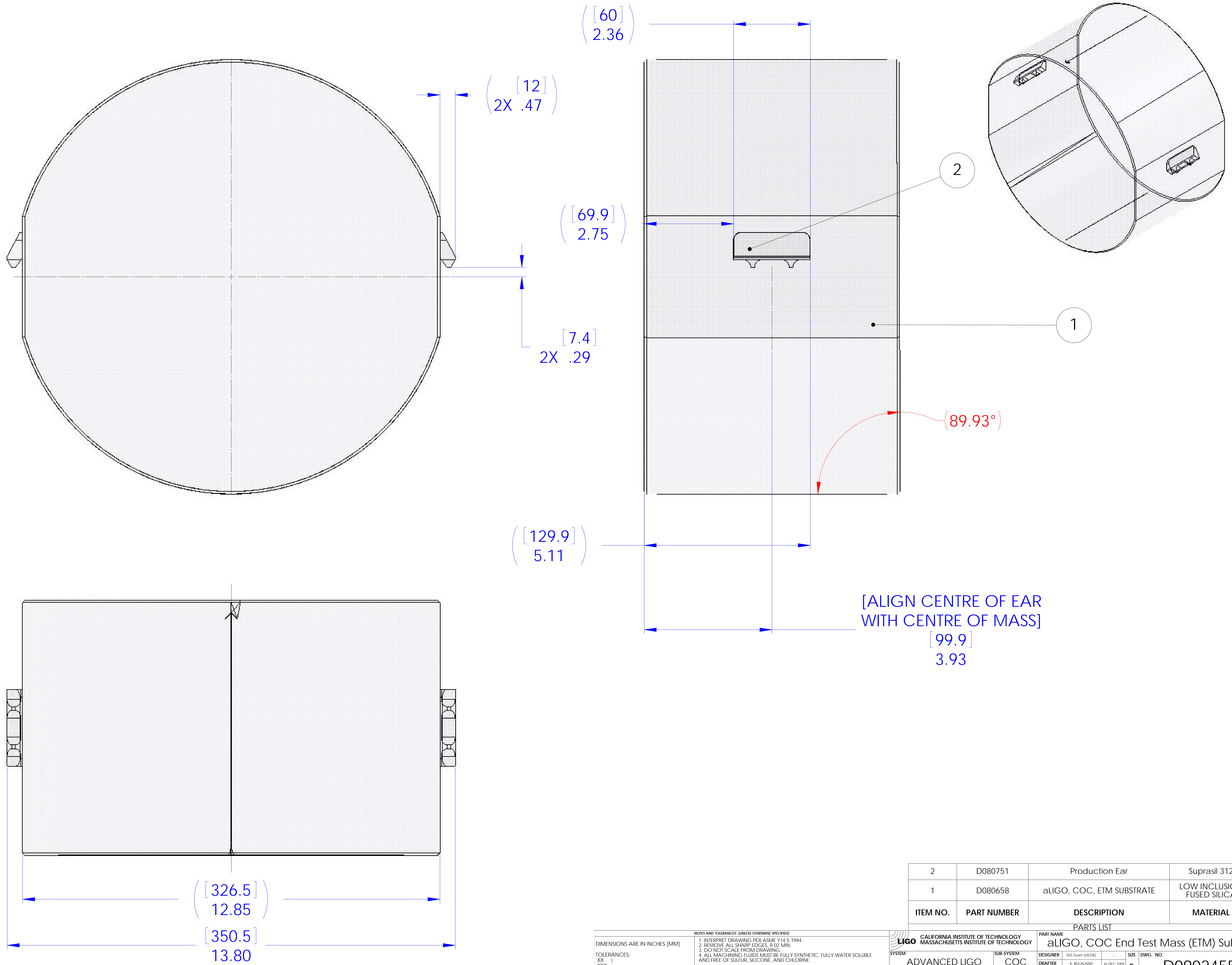


NOTES CONTINUED:  
 © BAG ALL ITEMS AND MARK OR TAG EACH  
 BAG WITH DRAWING NUMBER, REVISION, AND QUANTITY.  
 EXAMPLE: DXXXXXX-VY, QTY:1BD

REV.	DATE	DCN #	DRAWING TREE #
X-000	DEC 09	(K BUCKLAND)	-
v3	07 MAY 2019	E1900136-x0	-
-	-	-	-



ITEM NO.	PART NUMBER	DESCRIPTION	MATERIAL	QTY.
2	D080751	Production Ear	Suprasil 312	2
1	D080658	aLIGO, COC, ETM SUBSTRATE	LOW INCLUSION FUSED SILICA	1

NOTES AND TOLERANCES: (UNLESS OTHERWISE SPECIFIED)		PART NAME	
1. INTERPRET DRAWING PER ASME Y14.5-1994. 2. REMOVE ALL SHARP EDGES, R.02 MIN. 3. DO NOT SCALE FROM DRAWING. 4. ALL MACHINING FLUIDS MUST BE FULLY SYNTHETIC, FULLY WATER SOLUBLE AND FREE OF SULFUR, SILICONE, AND CHLORINE.		CALIFORNIA INSTITUTE OF TECHNOLOGY MASSACHUSETTS INSTITUTE OF TECHNOLOGY aLIGO, COC End Test Mass (ETM) Substrate	
DIMENSIONS ARE IN INCHES [MM] TOLERANCES: XX ± .XXX ± ANGULAR ± °		PART NAME: aLIGO, COC End Test Mass (ETM) Substrate DESIGNER: SUS Team (D/SJK) DRAFTER: K. BUCKLAND CHECKER: R. JONES APPROVAL:	
MATERIAL: N/A FINISH: N/A µinch		SYSTEM: ADVANCED LIGO SUB-SYSTEM: COC NEXT ASSY: D1000759 (& D0902823)	
		SIZE: E DWG. NO.: D0902455 SCALE: 1:1 PROJECTION:	