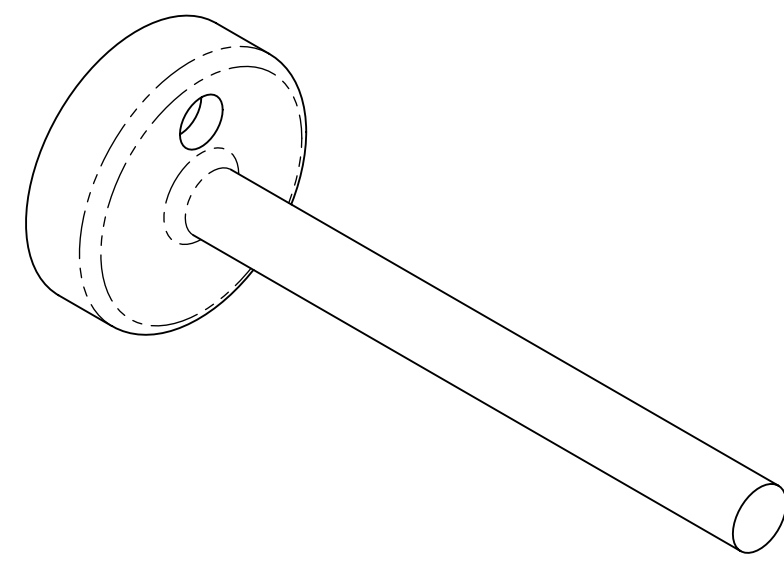
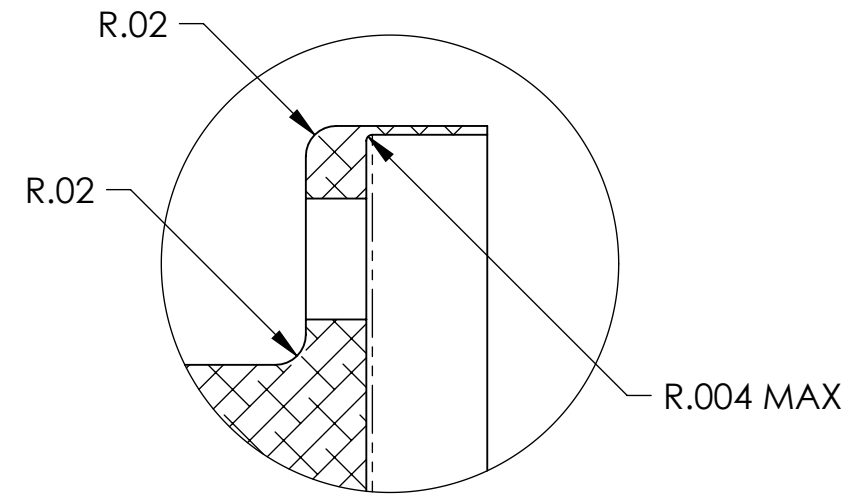


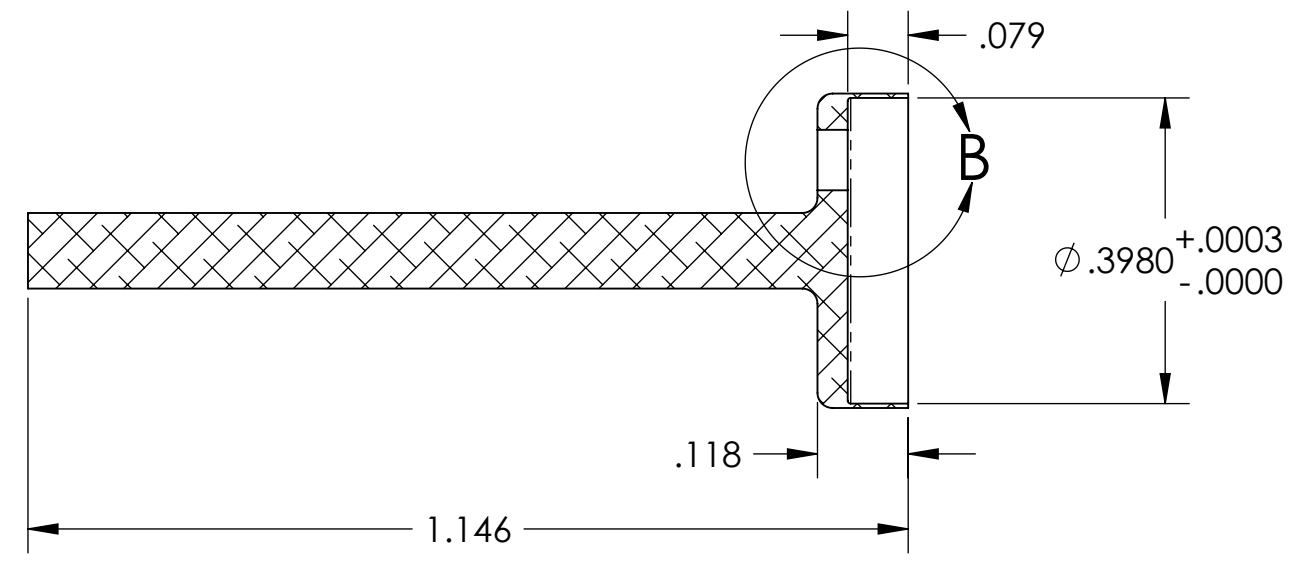
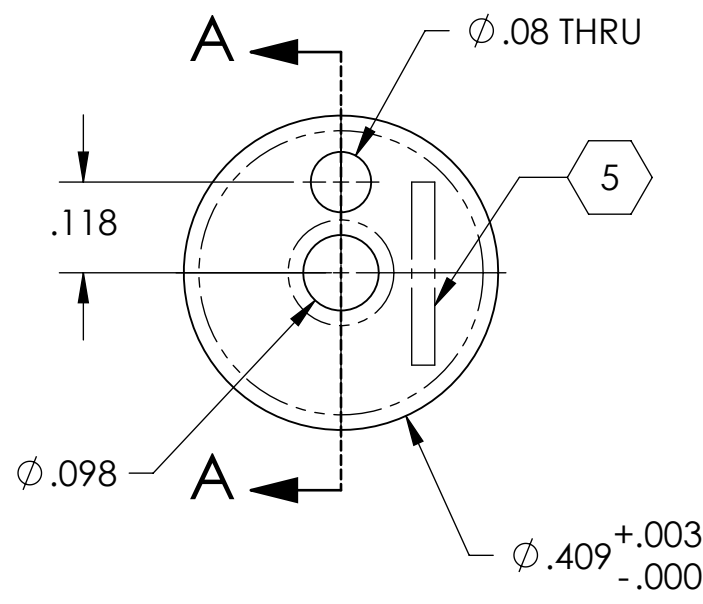
D0902491_AdvLIGO_SUS_HSTS_Magnet Flag, Upper Mass, PART PDM REV: X-004, DRAWING PDM REV: X-006

NOTES CONTINUED:
 5. SCRIBE, ENGRAVE, OR MECHANICALLY STAMP (NO DYES OR INKS) A UNIQUE THREE DIGIT SERIAL NUMBER & REVISION NUMBER ON EACH PART. SERIAL NUMBERS START AT 101 FOR THE FIRST ARTICLE AND PROCEED CONSECUTIVELY. BAG AND TAG PARTS WITH THEIR DRAWING PART NUMBER, REVISION, VARIANT OR "TYPE" (IF APPLICABLE), AND QUANTITY. IF PARTS ARE TOO SMALL TO SCRIBE, BAGGING AND TAGGING ALONE IS SUFFICIENT.
 EXAMPLE (PART): XXX-v1
 EXAMPLE (TAG): DXXXXXX-vy, TYPE-xx, QTY: TBD
 6. APPROXIMATE WEIGHT = 0.589g
 7. MACHINE ALL SURFACES TO REMOVE OXIDES AND MILL FINISH. USE OF ABRASIVE REMOVAL TECHNIQUES IS NOT ALLOWED.
 8. ALL PARTS SHALL BE MANUFACTURED IN ACCORDANCE WITH LIGO SPECIFICATION E0900364.

REV.	DATE	DCN #	DRAWING TREE #
v1	09 JUL 2010	E0900501	E0900353
-	-	-	-
-	-	-	-



ISOMETRIC VIEW



SECTION A-A

NOTES AND TOLERANCES: (UNLESS OTHERWISE SPECIFIED)				LIGO CALIFORNIA INSTITUTE OF TECHNOLOGY MASSACHUSETTS INSTITUTE OF TECHNOLOGY		PART NAME	
DIMENSIONS ARE IN INCHES		1. INTERPRET DRAWING PER ASME Y14.5-1994. 2. REMOVE ALL SHARP EDGES, R.02 MIN. 3. DO NOT SCALE FROM DRAWING. 4. ALL MACHINING FLUIDS MUST BE FULLY SYNTHETIC, FULLY WATER SOLUBLE AND FREE OF SULFUR, SILICONE, AND CHLORINE.		SYSTEM ADVANCED LIGO		SUB-SYSTEM SUS	
TOLERANCES: .XX ± .01 .XXX ± .005		MATERIAL 6061-T6 Al		FINISH 32 μinch		NEXT ASSY MULTIPLE ASSY	
ANGULAR ± 0.5°				DESIGNER M. MEYER 27 OCT 2009		SIZE DWG. NO. B D0902491	
				DRAFTER B. MOORE 17 NOV 2009		REV. v1	
				CHECKER M. MEYER 28 NOV 2009		SCALE: 4:1 PROJECTION:	
				APPROVAL		SHEET 1 OF 1	