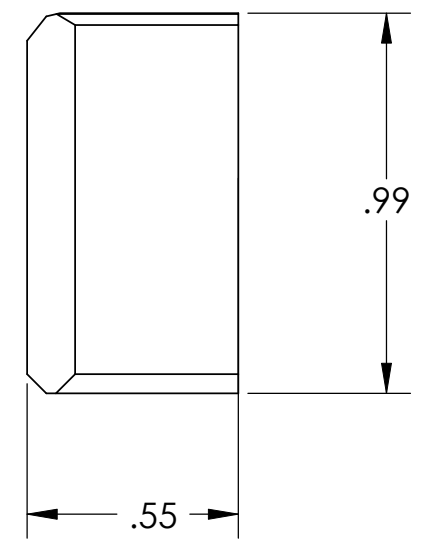
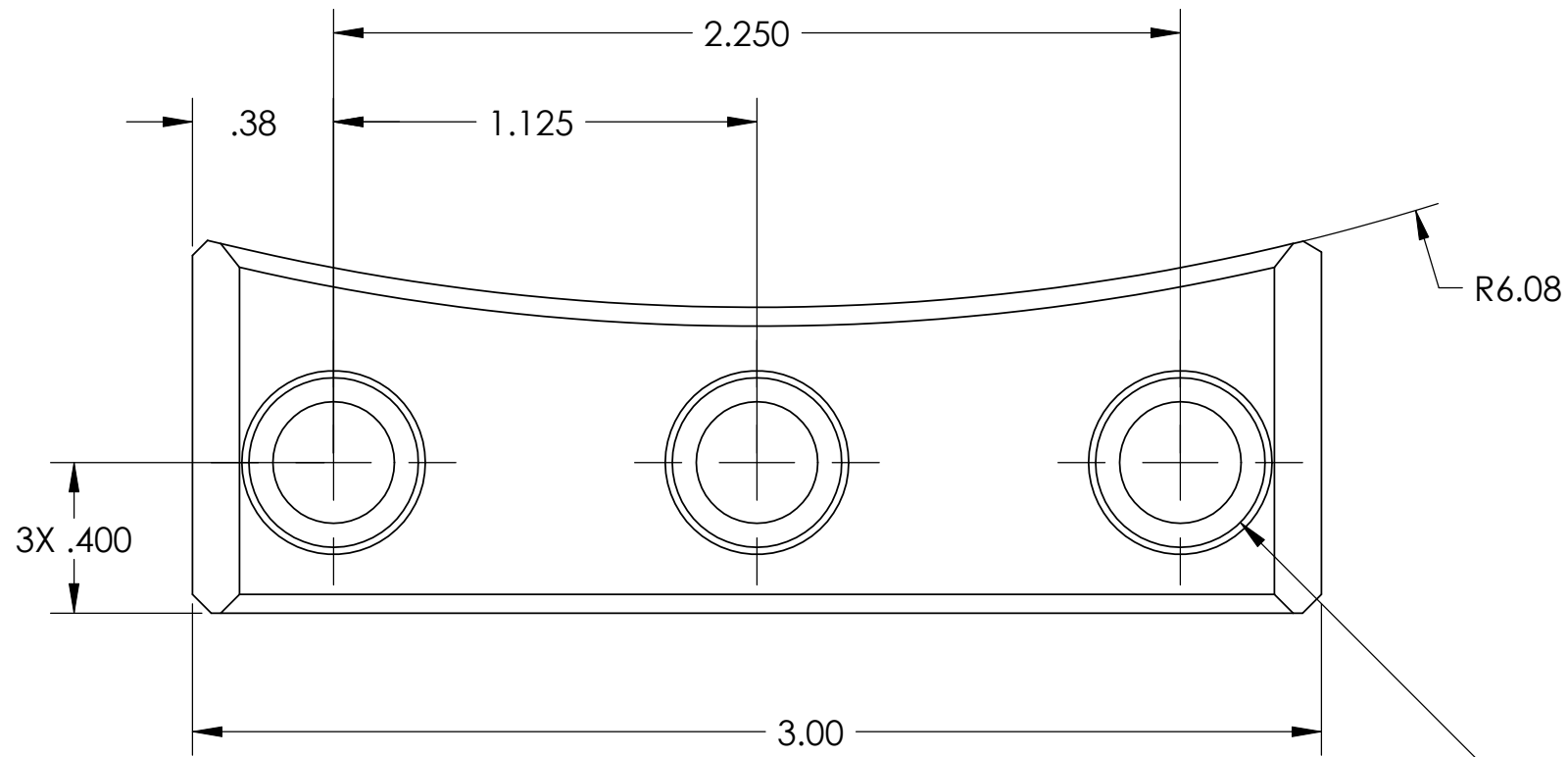


D0902548 Trillium Pod Loading Slider Foot Slider, PART PDM REV: X-005, DRAWING PDM REV: X-003

NOTES CONTINUED:
 5. SCRIBE, ENGRAVE, OR MECHANICALLY STAMP (NO INKS OR DYES) DRAWING PART NUMBER, REVISION (AND VARIANT OR "TYPE" IF APPLICABLE) ON NOTED SURFACE OF PART FOLLOWED ON THE NEXT LINE WITH A THREE DIGIT SERIAL NUMBER. SERIAL NUMBERS START AT 001 FOR THE FIRST ARTICLE AND PROCEED CONSECUTIVELY. USE MINIMUM 0.12" HIGH CHARACTERS, UNLESS THE SIZE OF THE PART DICTATES SMALLER CHARACTERS. A VIBRATORY TOOL MAY BE USED.
 EXAMPLE: DXXXXXX-VY, TYPE-XX, S/N XXX
 6. ALL PARTS SHALL BE MANUFACTURED IN ACCORDANCE WITH LIGO SPECIFICATION E0900364.
 7. MACHINE ALL SURFACES TO REMOVE OXIDES AND MILL FINISH. ABRASIVE REMOVAL TECHNIQUES ARE NOT ACCEPTABLE.

REV.	DATE	DCN #	DRAWING TREE #
V1	18 Dec. 2009	E0900443-X0	E1000025
V2	22 Mar 2010	E0900443-V1	E1000025



3X ϕ .32 THRU ALL
 \square ϕ .45 ∇ .31
 \checkmark ϕ .49 X 90°, NEAR SIDE
 \checkmark ϕ .37 X 90°, FAR SIDE

2X .13X 45°

DO NOT BREAK BOTTOM EDGE

5

NOTES AND TOLERANCES: (UNLESS OTHERWISE SPECIFIED)				LIGO CALIFORNIA INSTITUTE OF TECHNOLOGY MASSACHUSETTS INSTITUTE OF TECHNOLOGY		PART NAME					
DIMENSIONS ARE IN INCHES		1. INTERPRET DRAWING PER ASME Y14.5-1994. 2. BREAK ALL EDGES AND CORNERS .06 X 45°. 3. DO NOT SCALE FROM DRAWING. 4. ALL MACHINING FLUIDS MUST BE FULLY SYNTHETIC, FULLY WATER SOLUBLE AND FREE OF SULFUR, SILICONE, AND CHLORINE.		ADVANCED LIGO		SUB-SYSTEM		SEI		Trillium Pod, Loading, Slider Foot, Slider	
TOLERANCES: .XX ± .015 .XXX ± .005		MATERIAL		FINISH		NEXT ASSY		DESIGNER		REV.	
ANGULAR ± .5°		PFA440		63 μ inch		D0902547		S.BARNUM 1 Dec. 2009		V2	
								CHECKER		SCALE: 2:1	
								F.MATICHARD 18 Dec. 2009		PROJECTION:	
								APPROVAL		SHEET 1 OF 1	
								K.MASON 18 Dec. 2009		DWG. NO. D0902548	