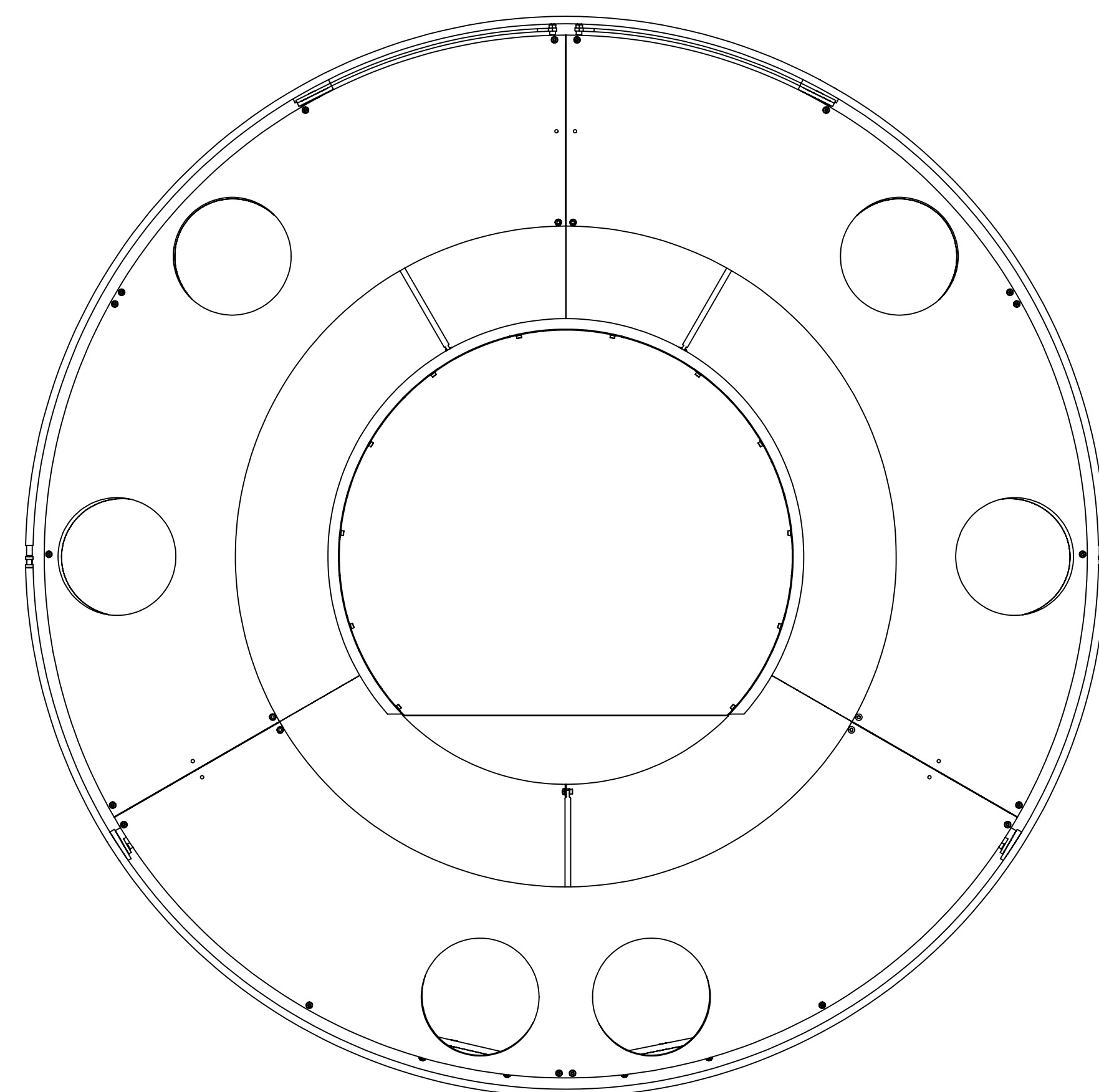
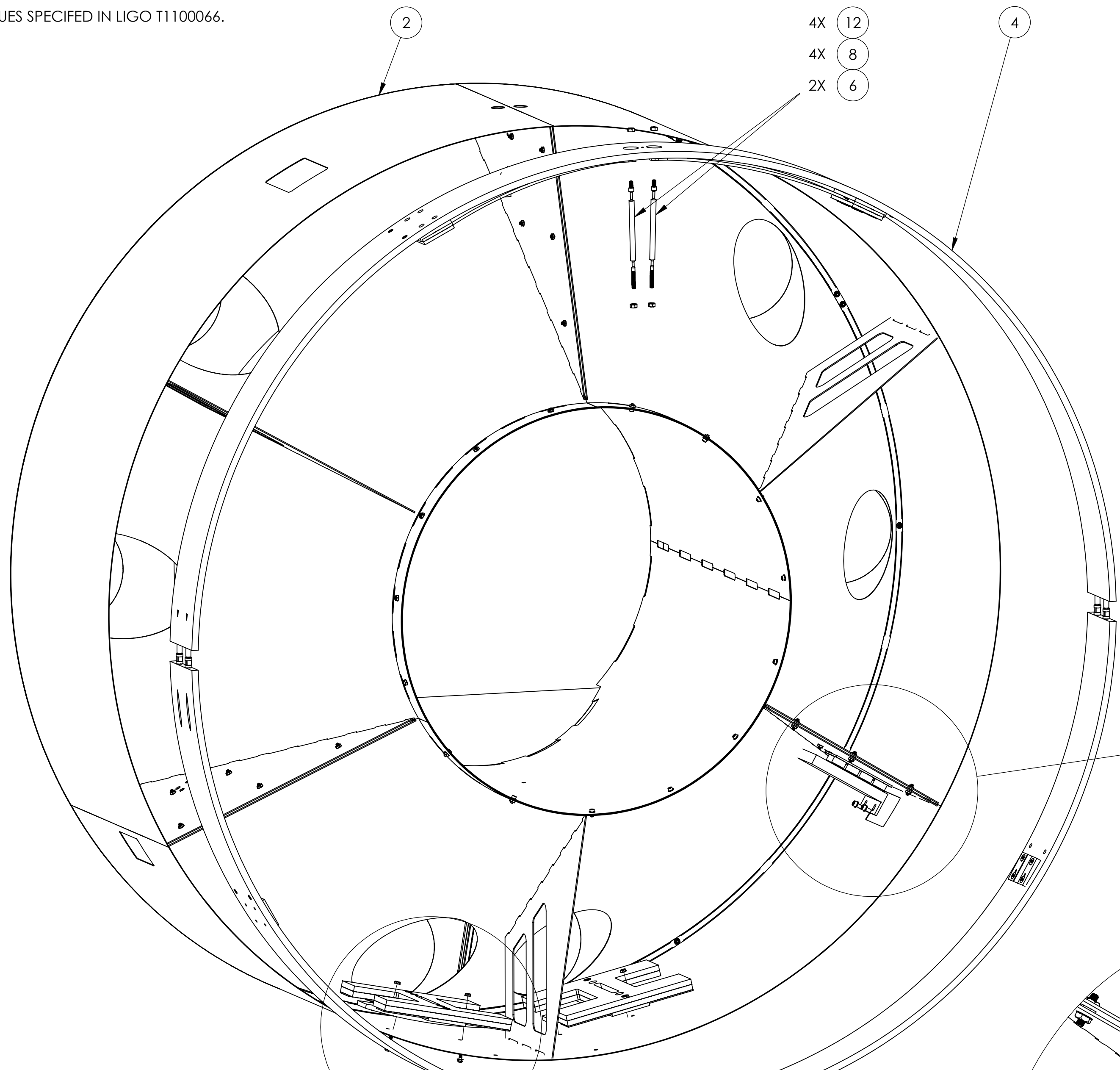


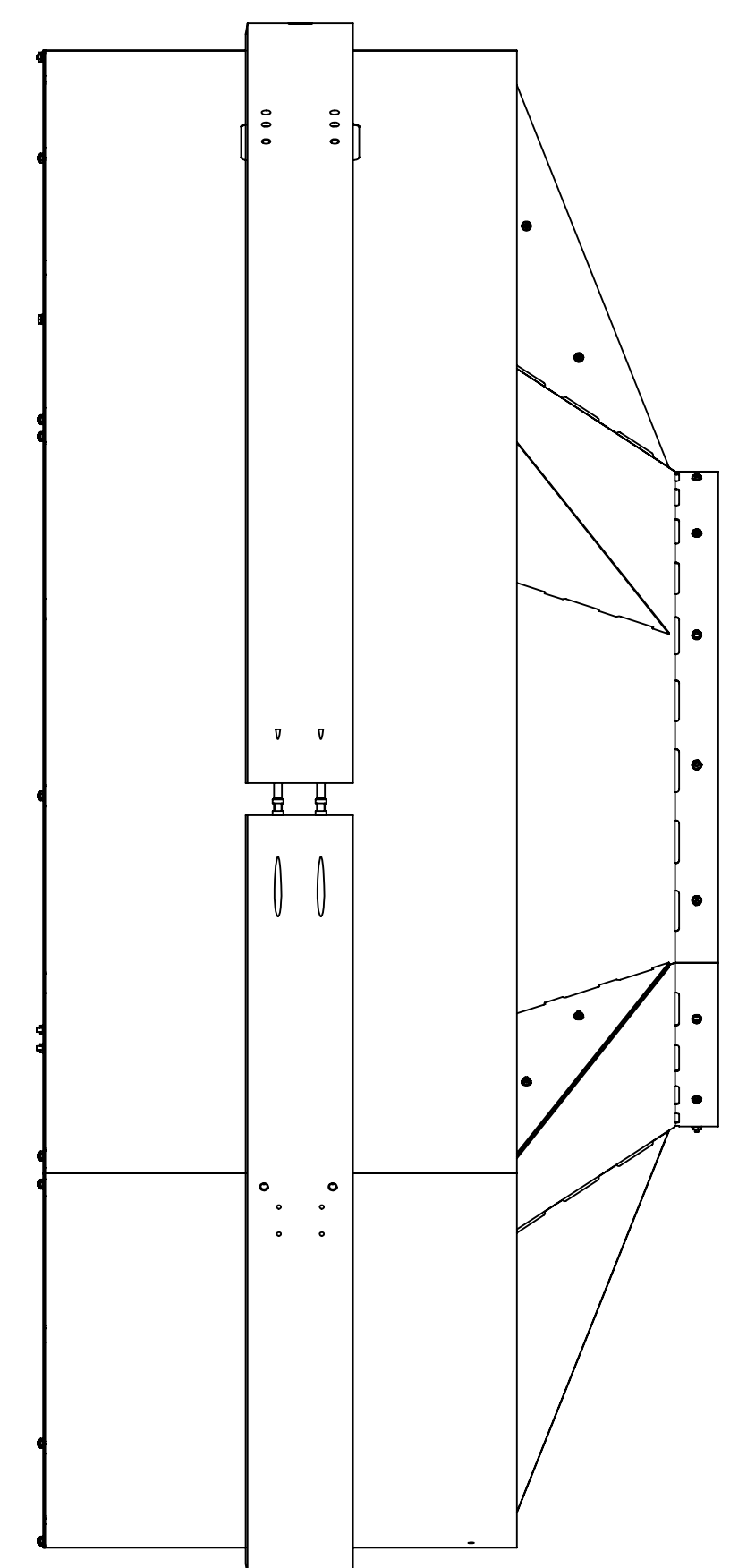
NOTES CONTINUED:

1. TWO BALANCED WEIGHT ASSEMBLIES (D1002402) TO BE INSTALLED BEFORE ATTACH BAFFLE TO SUSPENSION RING.
2. TORQUE SHCS TO VALUES SPECIFIED IN LIGO T1100066.

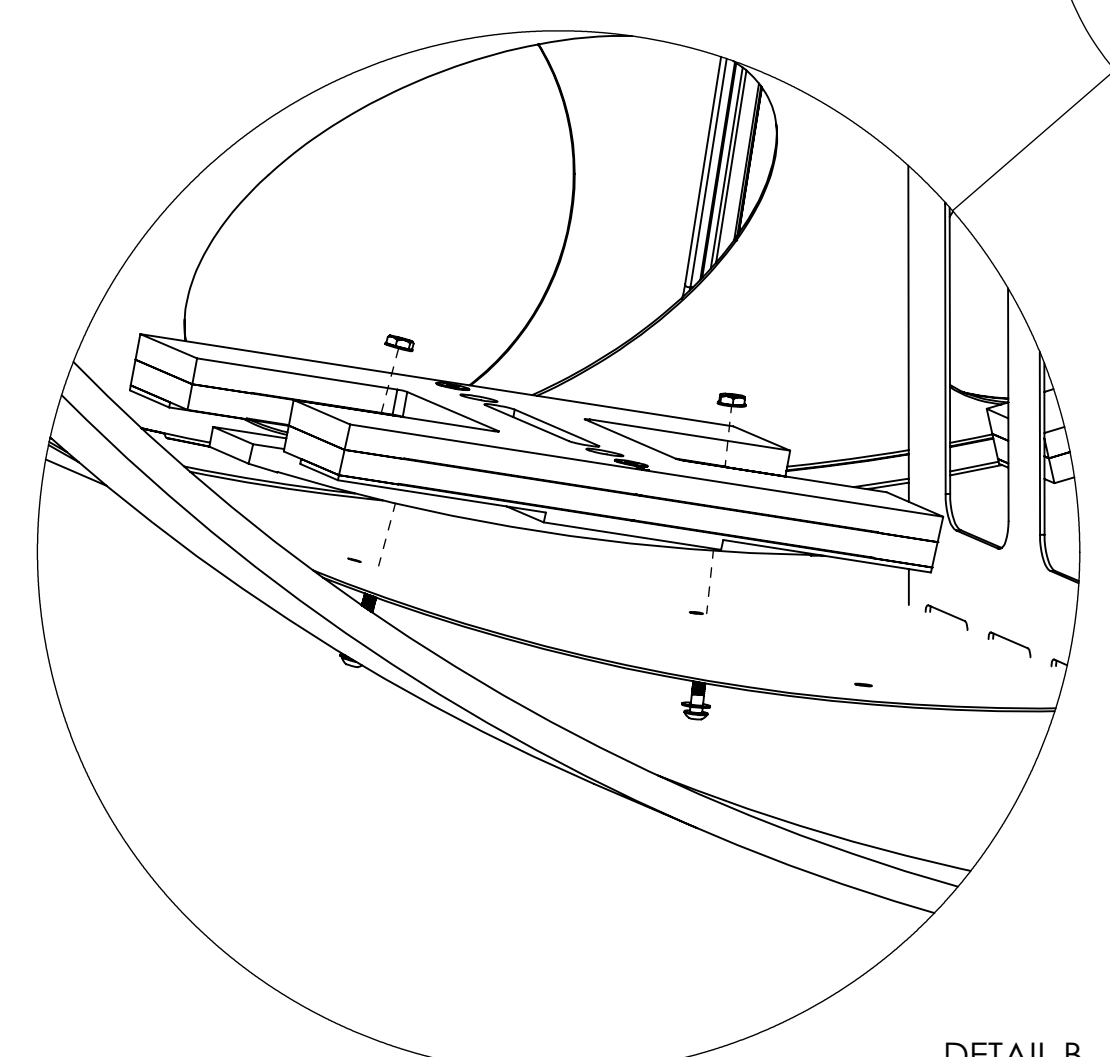
REV.	DATE	DCN #	DRAWING TREE #
v1	12 OCT 2010	E1000360-v1	-
v2	9 MAY 2011	E1000360-v2	-
v3	19 AUG 2011	E1000360-v3	-



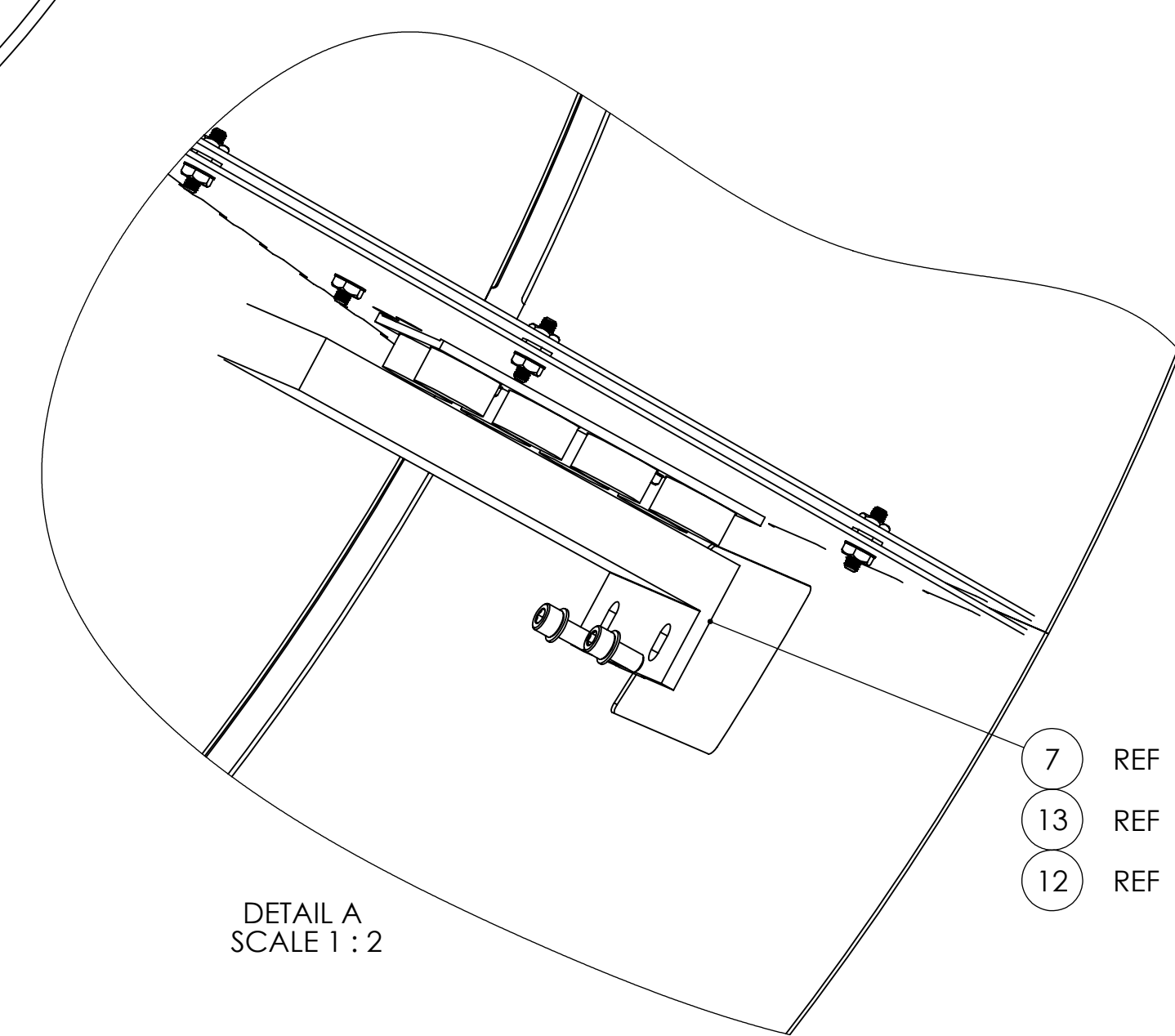
FRONT VIEW



SIDE VIEW



DETAIL B
SCALE 1 : 3



DETAIL A
SCALE 1 : 2

- 7 REF
- 13 REF
- 12 REF

QTY	QTY	QTY	QTY	ITEM NO.	PART NUMBER	DESCRIPTION	MATERIAL
4	4	4	13	C-2008-N	SOCKET HEAD CAP SCREW, SHC, 1/4-20 x 1/2" L	18-8 SSSL	
4	4	4	12	WF-25	FLAT WASHER 1/4 SCREW SIZE	18-8 SSSL	
4	4	4	11	BU-1016-N	BUTTON HEAD SOCKET CAP SCREW, #10-32 x 1" L	18-8 SSSL	
4	4	4	10	N-1032-NA	HEX NUT, 10-32 THRD SIZE	Ag-PLATED 300 SSSL	
8	8	8	9	WF-10	FLAT WASHER, #10 SCREW SIZE	18-8 SSSL	
4	4	4	8	N-2520-A	HEX NUT, 1/4-20 THRD SIZE	Ag-PLATED 300 SSSL	
2	2	2	7	D1100821	LOWER COPPER PLATE	COPPER 99.9%	
2	2	2	6	D1001970	SUSPENSION ROD	304, 316 OR 302 SSSL	
2	2	2	5	D1002402	BALANCE WEIGHT ASSEMBLY	N/A	
1	1	1	4	D1002084	OUTER RING ASSY	N/A	
1	0	0	3	D1101398	WELDMENT ASSY_3 FP	N/A	
0	1	0	2	D1101397	RADIAL SEGMENT ASSY	N/A	
0	0	1	1	D1002061	WELDMENT ASSY_2 FP	N/A	
-03	-02	-01					

NOTES AND TOLERANCES: (UNLESS OTHERWISE SPECIFIED)	
DIMENSIONS ARE IN INCHES	
TOLERANCES: .XX ± .03 .XXX ± .010	
ANGULAR ± 1.0°	
MATERIAL	N/A
FINISH	N/A μinch

LIGO CALIFORNIA INSTITUTE OF TECHNOLOGY
MASSACHUSETTS INSTITUTE OF TECHNOLOGY

SYSTEM: **ADVANCED LIGO** SUB-SYSTEM: **AOS**

PART NAME: **MANIFOLD CRYO BAFFLE TOP ASSY, ITM**

DESIGNER: H. KELMAN 3 FEB 2010
DRAFTER: TQ. NGUYEN 12 OCT 2010
CHECKER: M. SMITH
APPROVAL: D. COYNE

SIZE: **D** DWG. NO.: **D0902617** REV.: **v3**

SCALE: 1:6 PROJECTION:

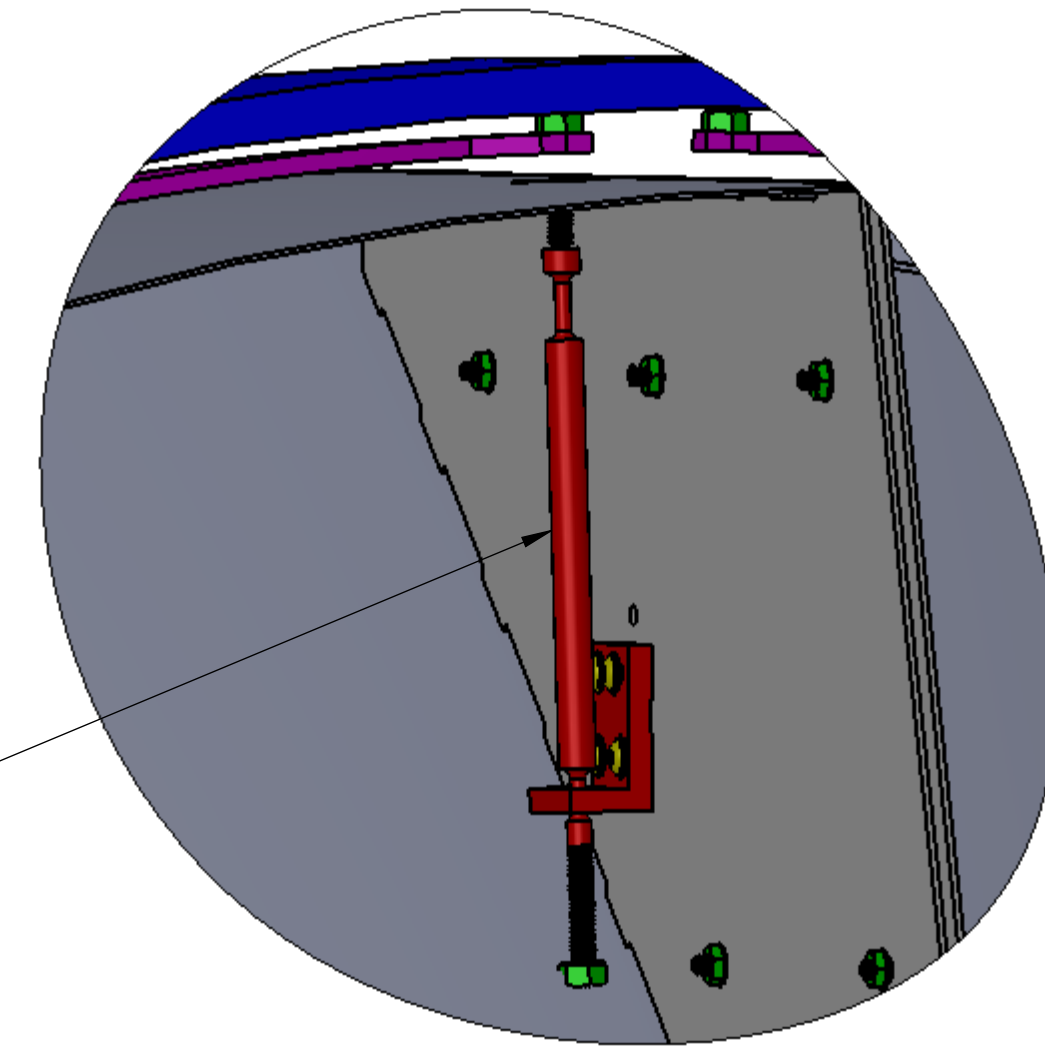
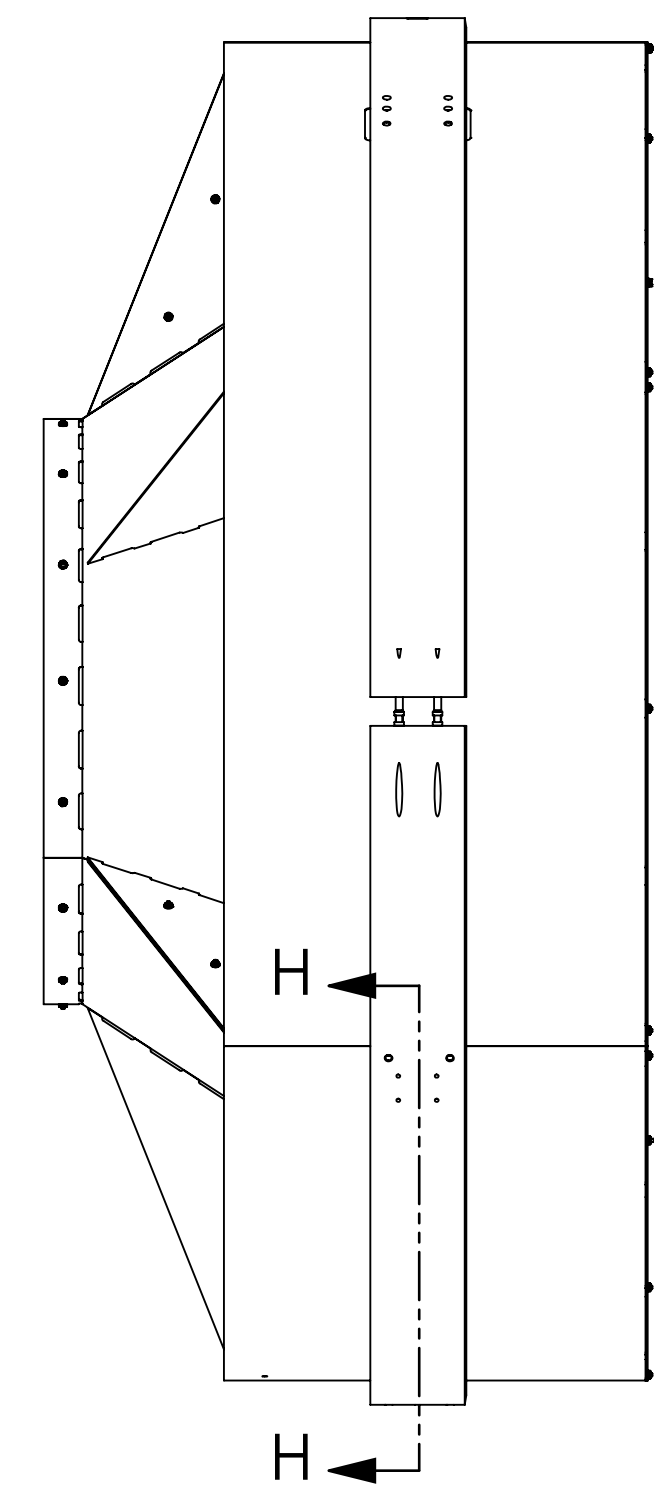
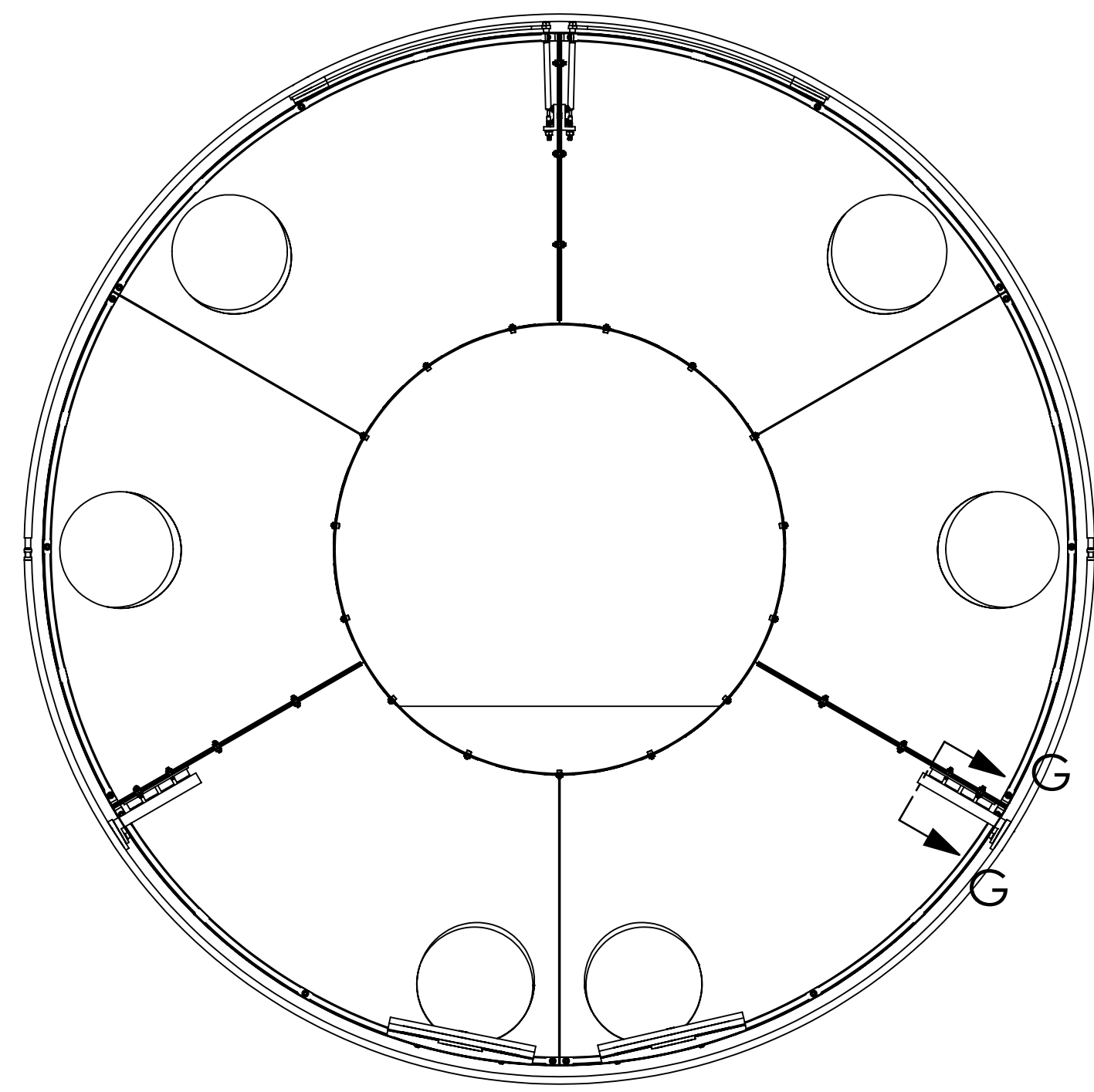
SHEET 1 OF 2

D0902617.dwg; Manifold_Cryo_Baffle_Assembly; ITM; H1H2; PART PDM; REV: X.115; DRAWING PDM; REV: X.024

8 7 6 5 4 3 2 1

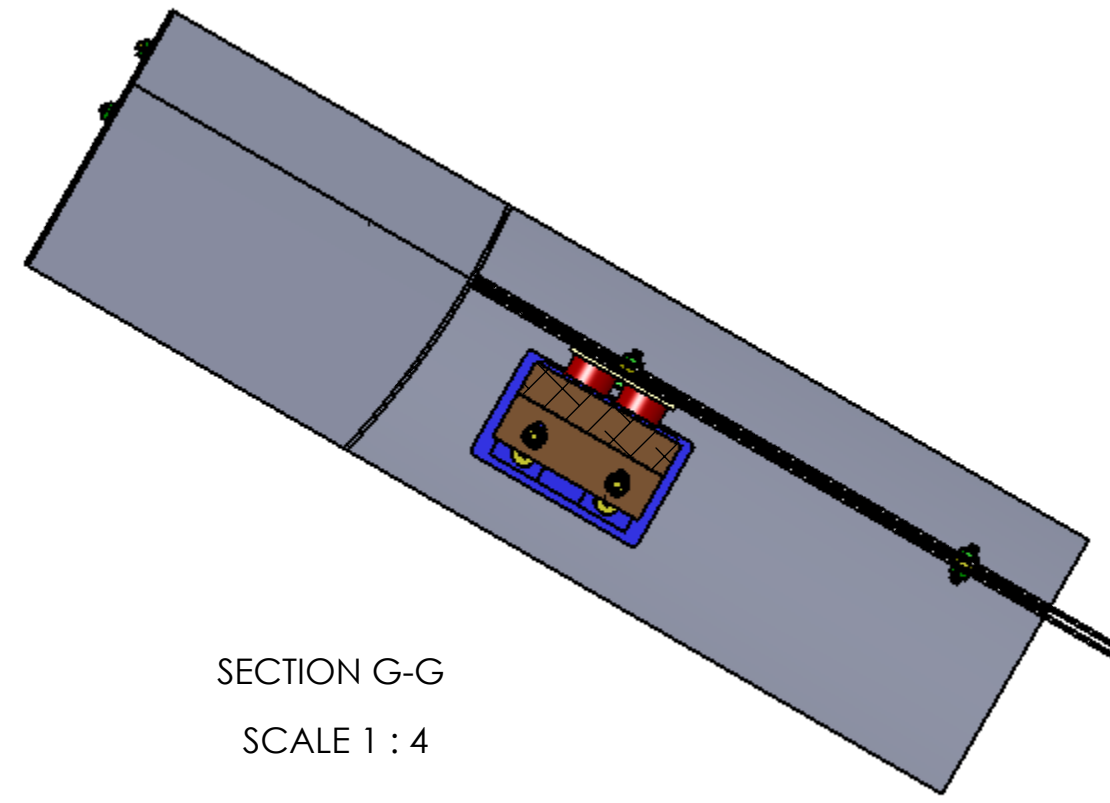
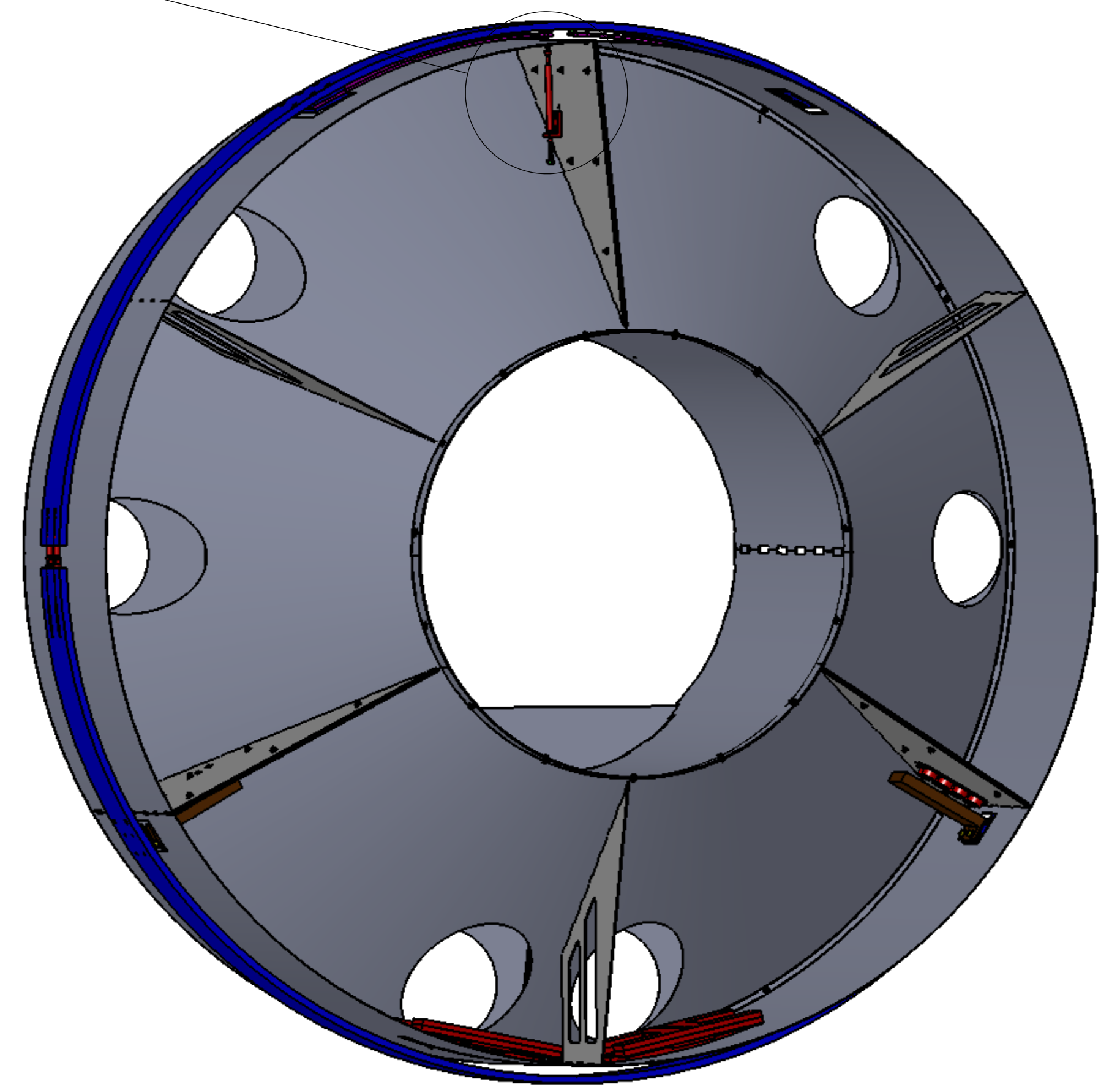
H
G
F
E
D
C
B
A

H
G
F
E
D
C
B
A

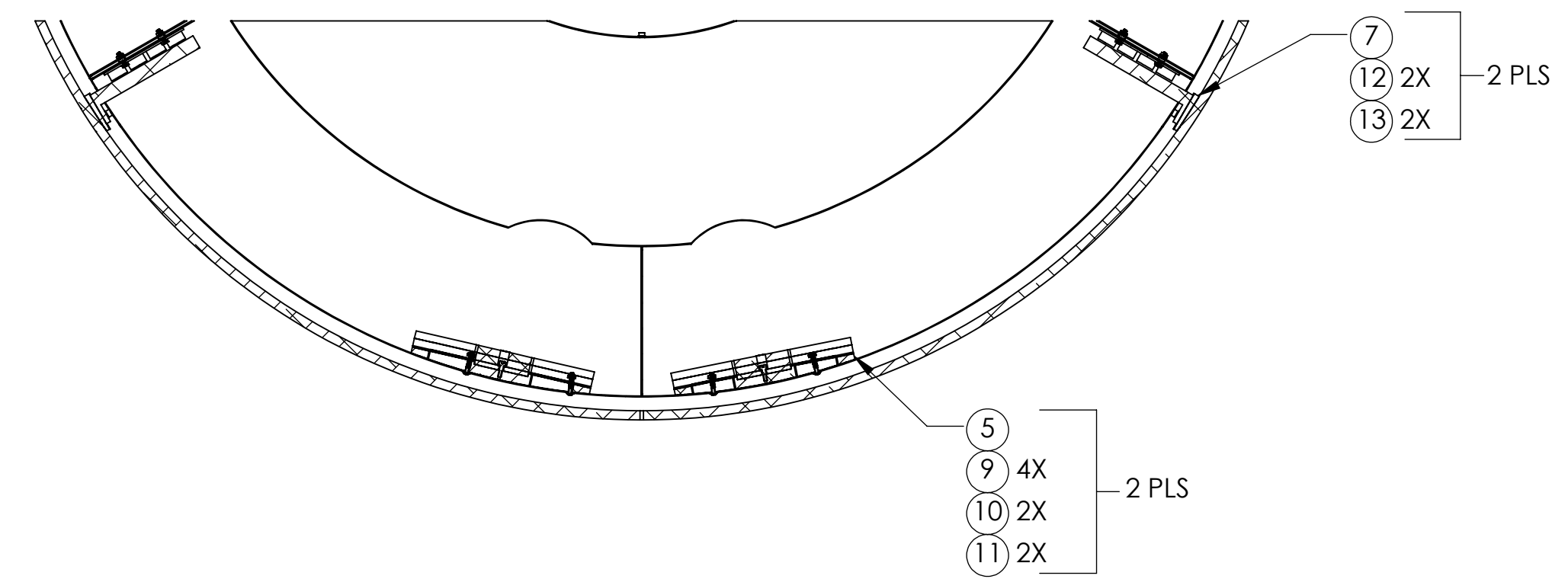


INSERT SUSPENSION ROD AND SECURE IT WITH WASHER & NUT BEFORE BRING THE BAFFLE IN TO MOUNT ON SUSPEN SPRING PLATES.

DETAIL C
SCALE 1 : 2



SECTION G-G
SCALE 1 : 4



SECTION H-H
SCALE 1 : 8

LIGO CALIFORNIA INSTITUTE OF TECHNOLOGY MASSACHUSETTS INSTITUTE OF TECHNOLOGY	
SIZE DWG. NO.	REV.
D D0902617	v3
SCALE: 1:10	PROJECTION:
SHEET 2 OF 2	

8 7 6 5 4 3 2 1

D:\020617\ligo_Merfield_Cryo_Baffle_Assembly_10X\112_PART_PDM\REV-X-115_DRAWING_PDM_REV-X-024