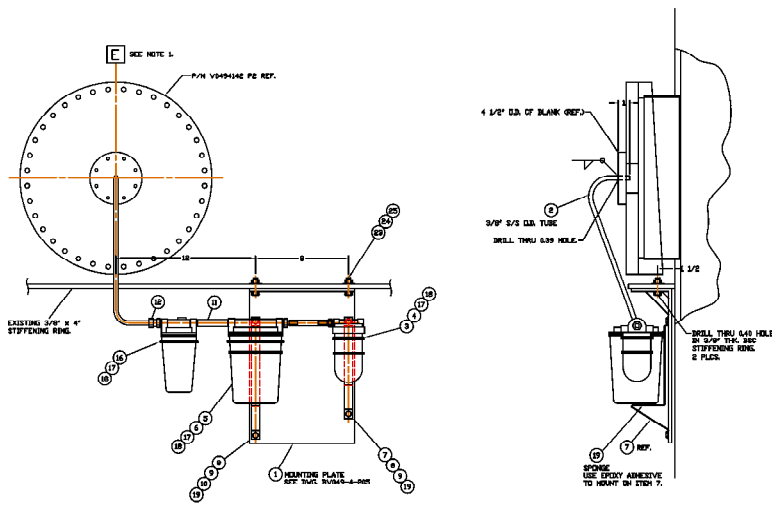


TYPICAL SHIPPING COVER FILTER SYSTEM (WATER, HYDROCARBON & PARTICLE FILTERS) ADVANCED LIGO D0902636-v1



**NOTE:**  
 1. FILTER LOCATION; SEE SHIPPING ASSEMBLY  
 DWGS. V049-4-302, 303, 304 & 305.

<p><b>REVISIONS:</b></p> <p>THIS DRAWING CONTAINS REVISIONS TO THE ORIGINAL DRAWING. REVISIONS ARE SHOWN BY CIRCLED NUMBERS AND LETTERS. REVISIONS ARE TO BE MADE BY THE DESIGNER OR HIS AUTHORIZED REPRESENTATIVE. REVISIONS ARE TO BE MADE IN ACCORDANCE WITH THE LATEST EDITION OF THE ISO 9000 SERIES OF STANDARDS. REVISIONS ARE TO BE MADE IN ACCORDANCE WITH THE LATEST EDITION OF THE ISO 9000 SERIES OF STANDARDS. REVISIONS ARE TO BE MADE IN ACCORDANCE WITH THE LATEST EDITION OF THE ISO 9000 SERIES OF STANDARDS.</p>				<p><b>UNLESS OTHERWISE SPECIFIED:</b></p> <p>STANDARDS ARE TO BE USED UNLESS OTHERWISE SPECIFIED.</p> <p>ALL DIMENSIONS ARE TO BE IN INCHES UNLESS OTHERWISE SPECIFIED.</p> <p>ALL DIMENSIONS ARE TO BE IN INCHES UNLESS OTHERWISE SPECIFIED.</p> <p>ALL DIMENSIONS ARE TO BE IN INCHES UNLESS OTHERWISE SPECIFIED.</p>				<p><b>PROCESS SYSTEMS INTERNATIONAL, INC.</b></p> <p>3000 W. 10TH AVENUE, SUITE 100</p> <p>BOULDER, CO 80502</p> <p>TEL: 303-440-1000</p> <p>FAX: 303-440-1001</p> <p>WWW.PSI-USA.COM</p>			
<p><b>DO NOT SCALE THIS DRAWING</b></p> <p>UNLESS OTHERWISE SPECIFIED</p>				<p><b>REV 0 ISSUED FOR FABRICATION</b></p> <p>DATE: 2/29/97</p> <p>BY: [Signature]</p>				<p><b>B.S.C. AIR FILTER ASSEMBLY FOR SHIPPING ONLY</b></p> <p><b>LIGO VACUUM EQUIPMENT</b></p> <p>DWG NO: V049-4-204</p> <p>REV: 0</p>			
<p><b>REV</b></p> <p>DATE</p> <p>DESCRIPTION</p>				<p><b>REV</b></p> <p>DATE</p> <p>DESCRIPTION</p>				<p><b>REV</b></p> <p>DATE</p> <p>DESCRIPTION</p>			
<p><b>REV</b></p> <p>DATE</p> <p>DESCRIPTION</p>				<p><b>REV</b></p> <p>DATE</p> <p>DESCRIPTION</p>				<p><b>REV</b></p> <p>DATE</p> <p>DESCRIPTION</p>			

NOTE:  
 INSTALL ADHESIVE SIDE ON ALUMINUM COVER.  
 LOCATE THE EDGE OF ITEM 26 ON THE INSIDE  
 EDGE OF BOLT HOLES, AND LOCATE THE EDGE  
 OF ITEM 25 ON THE OUTER EDGE OF THE BOLT  
 HOLES.

