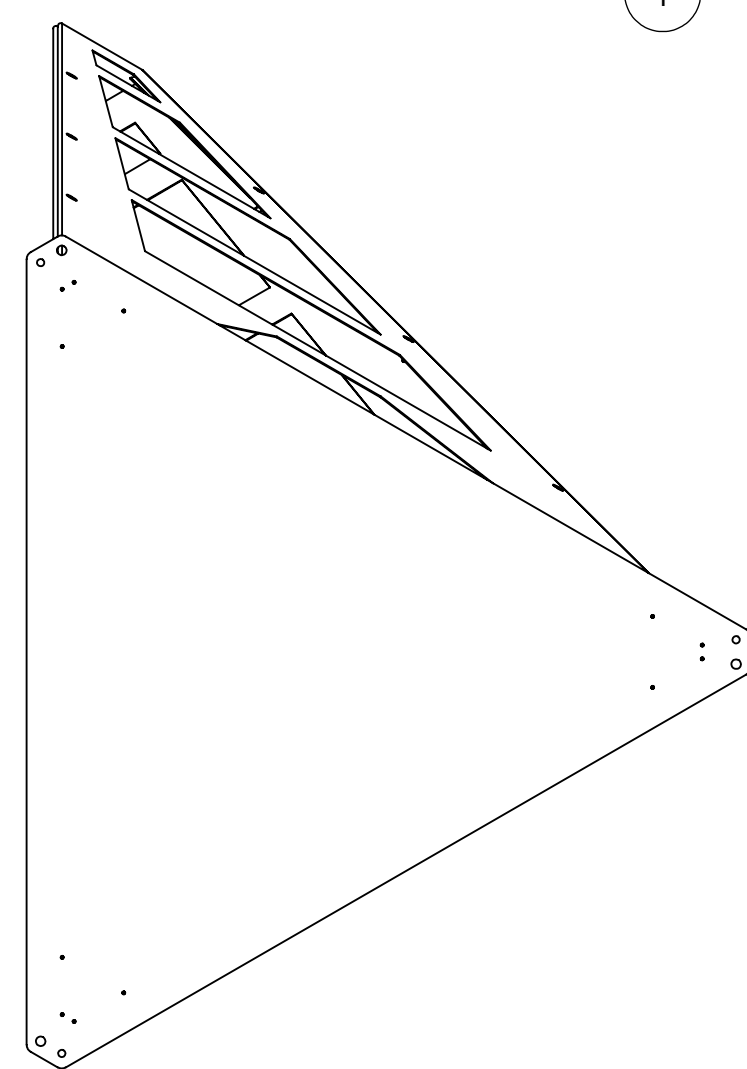
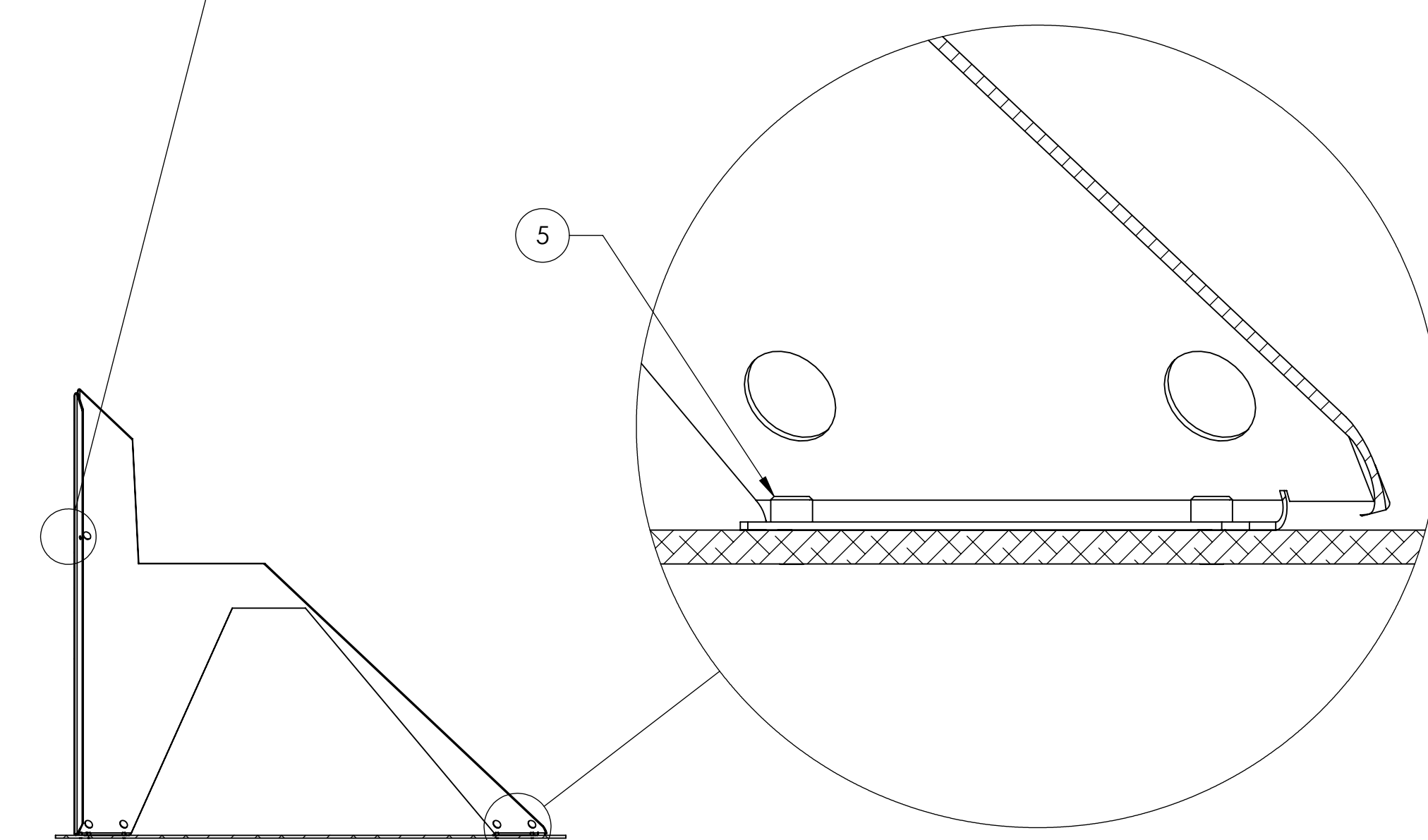
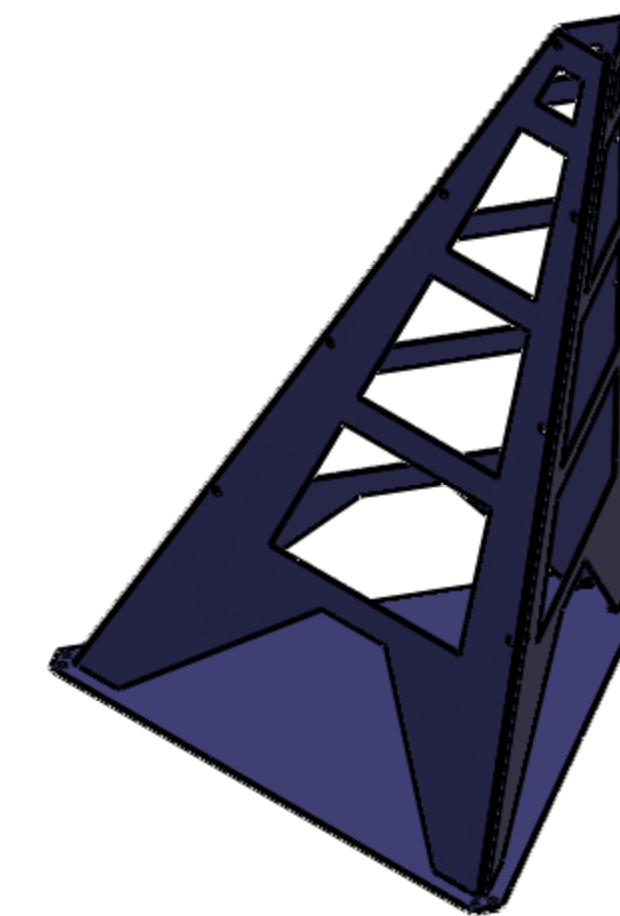
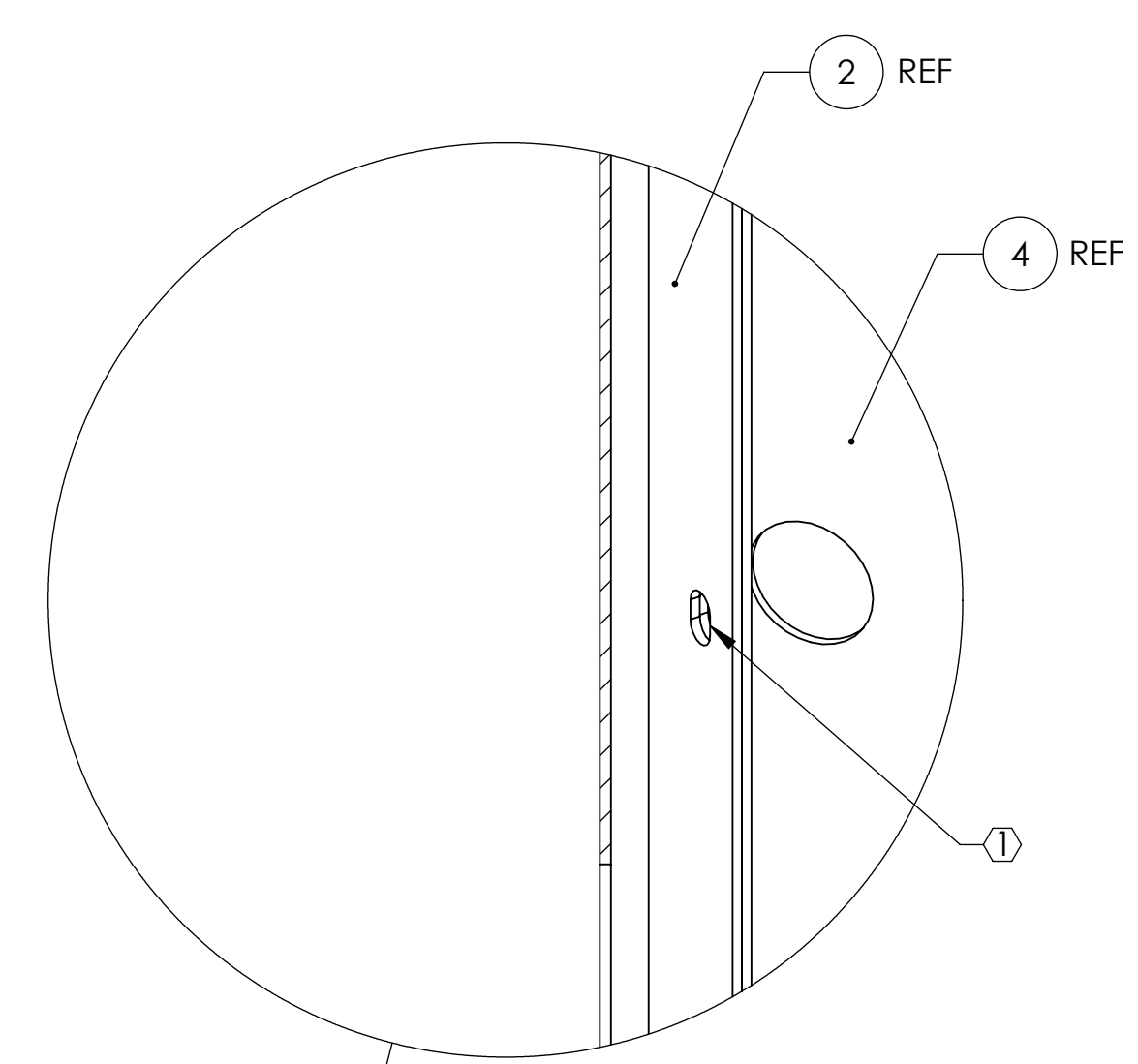
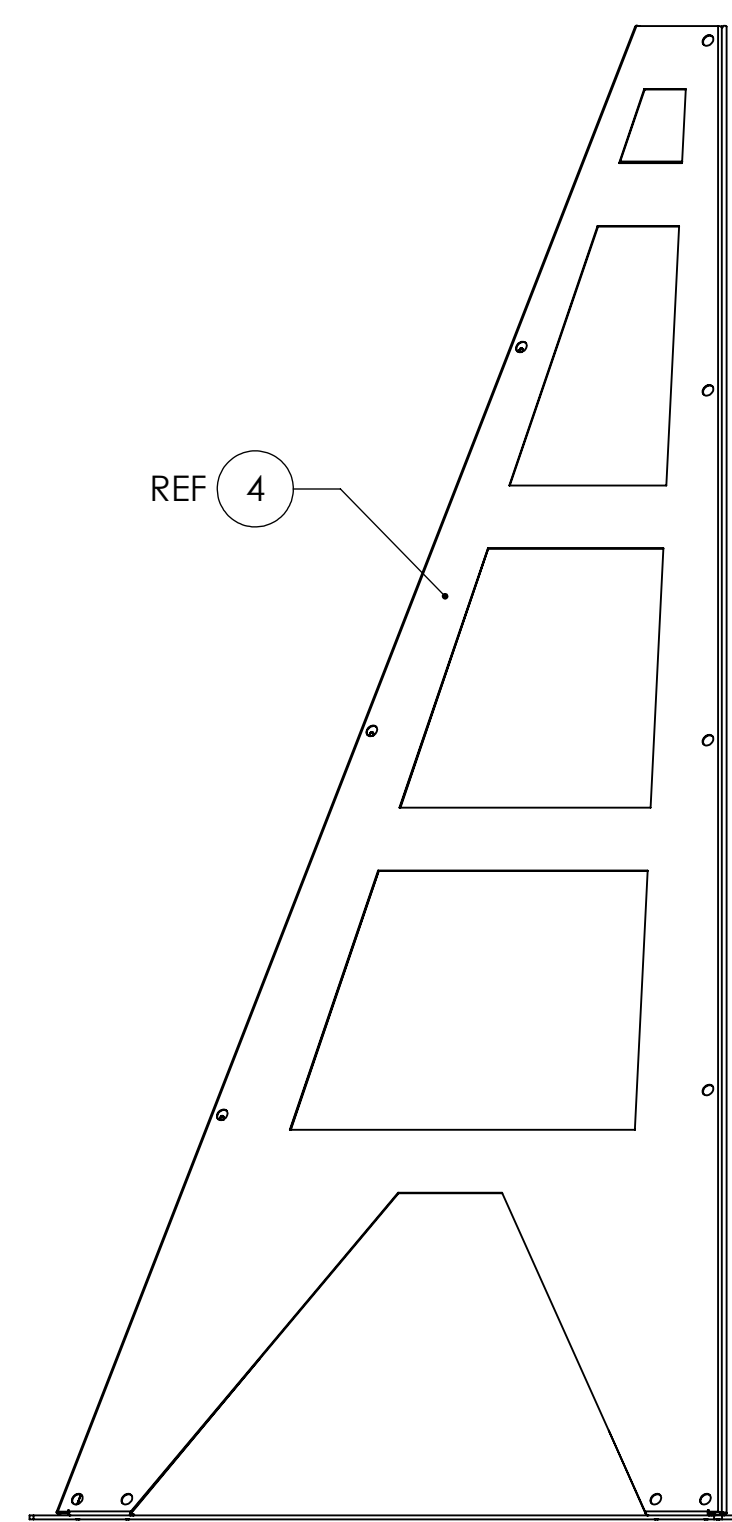
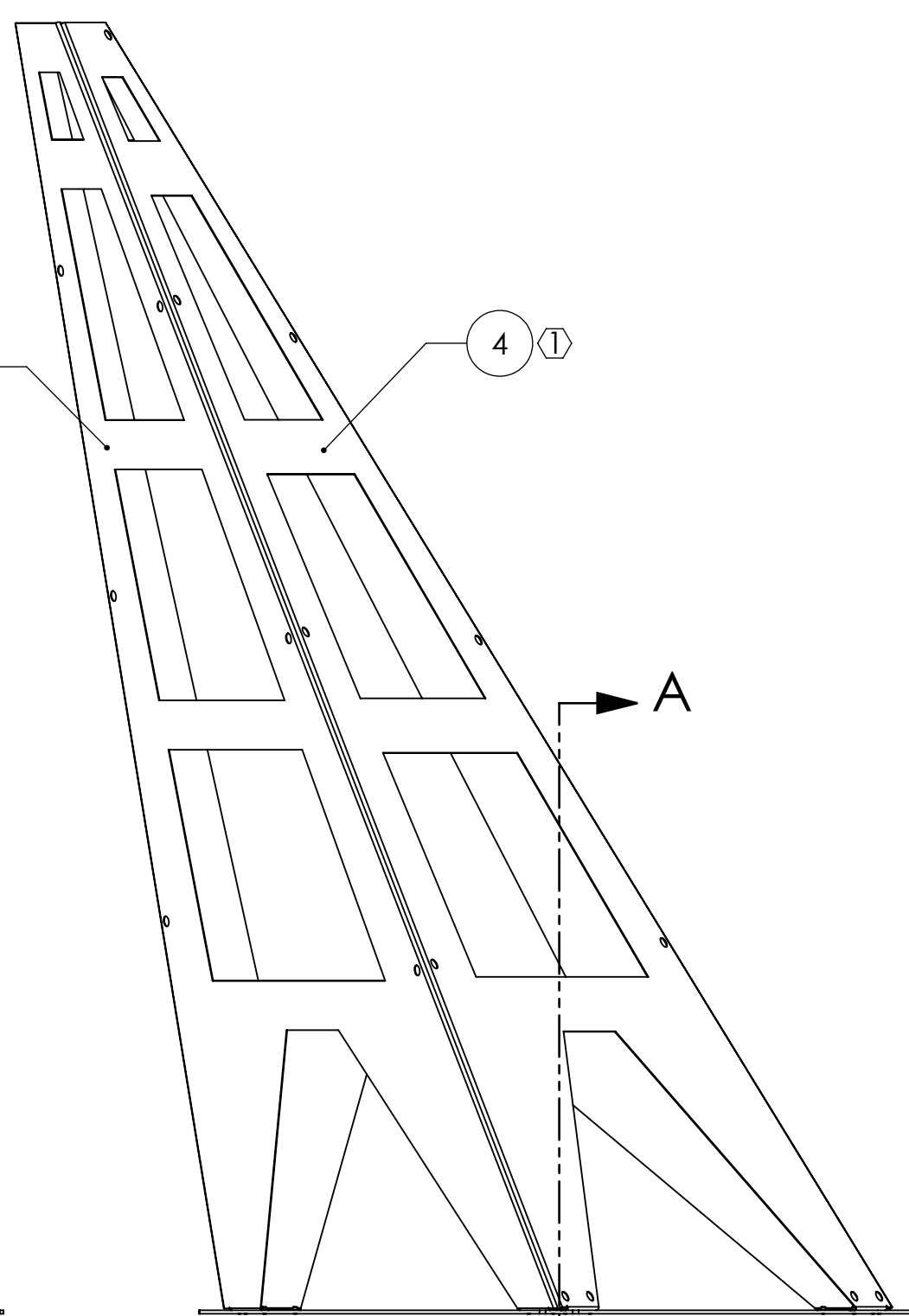
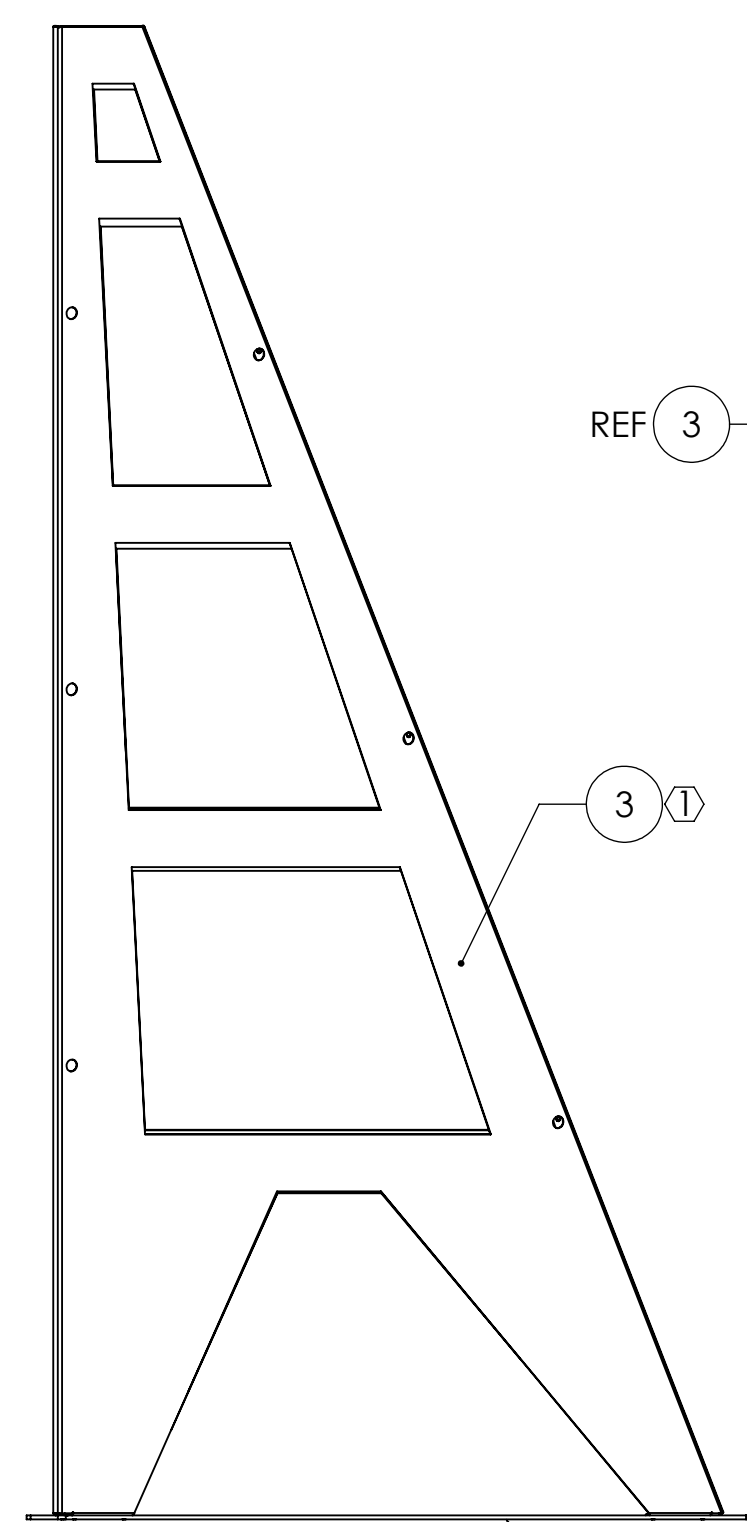
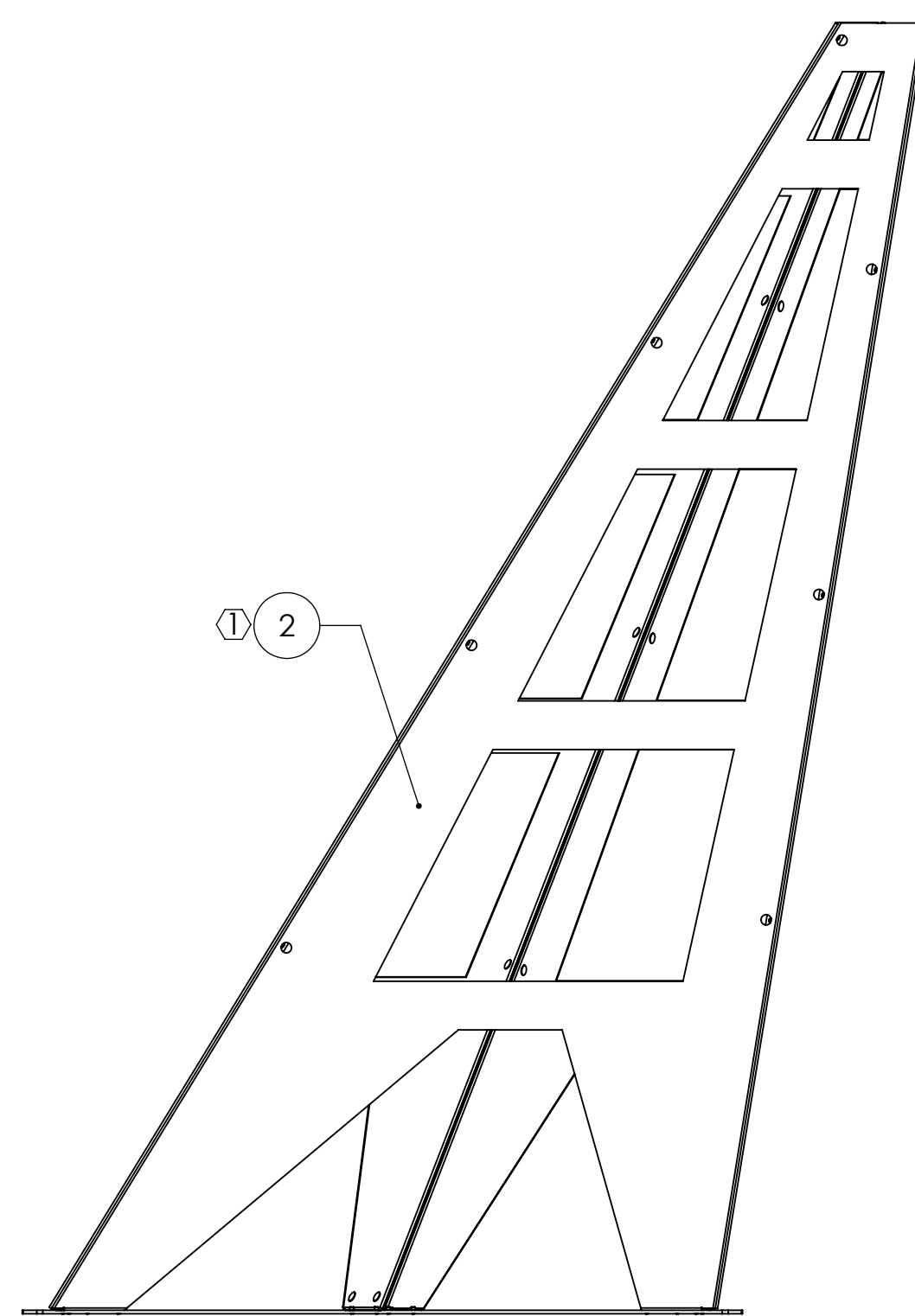
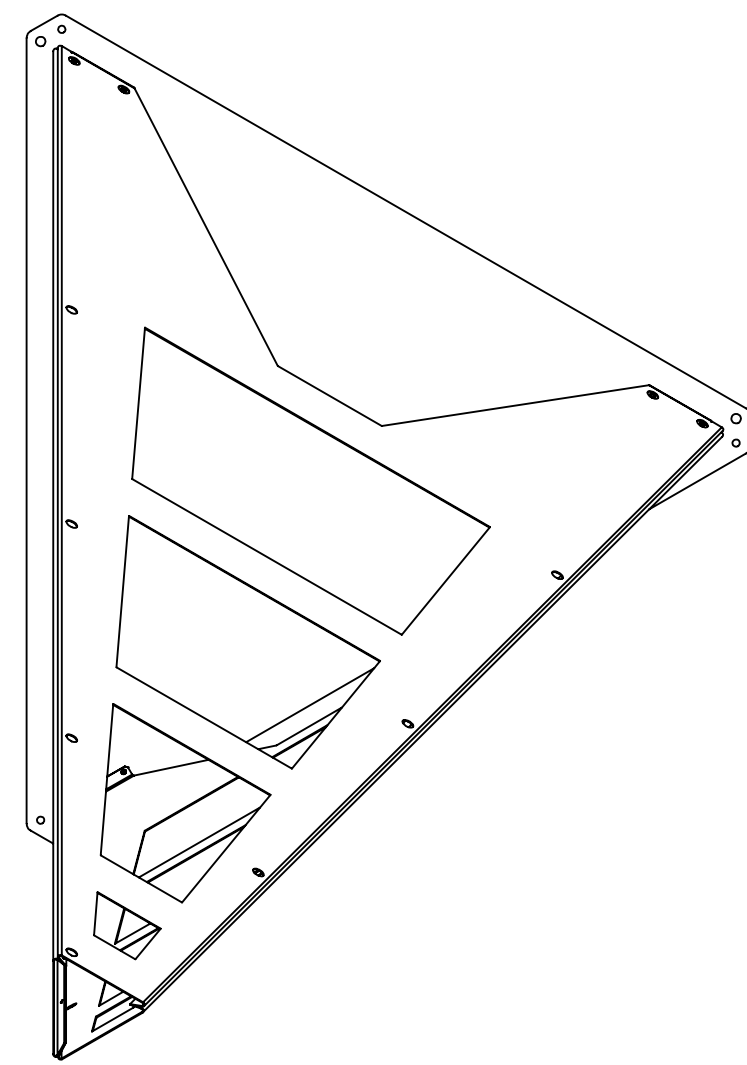


NOTES CONTINUED:
 ① CLAMP ITEMS 2, 3, & 4 TO EACH OTHER USING ITEMS 5 & 6 (NOT SHOWN), 13 PLACES.

REV.	DATE	DCN #	DRAWING TREE #
v1	06 NOV 2009	E0900399-v1	-
-	-	-	-
-	-	-	-



ITEM NO.	PART NUMBER	DESCRIPTION	MATERIAL	REQ	SPARE	TOTAL
6	-	HEX NUT, #10-24	STEEL	10	2	12
5	-	SCREW, SOCKET HEAD CAP, #10-24 UNC-2A X 0.3125 LONG	STEEL	22	2	24
4	D0902642	ALIGO AOS OPLEV & PHOTCAL RX PIER SIDE PANEL3 RH MOCK-UP	6061 Alloy	1		1
3	D0902641	ALIGO AOS OPLEV & PHOTCAL RX PIER SIDE PANEL2 RH MOCK-UP	6061 Alloy	1		1
2	D0902640	ALIGO AOS OPLEV & PHOTCAL RX PIER SIDE PANEL1 RH MOCK-UP	6061 Alloy	1		1
1	D0902324	ALIGO AOS PIER BASE MOCK-UP, 42 in	6061 Alloy	1		1

NOTES AND TOLERANCES: (UNLESS OTHERWISE SPECIFIED)	
DIMENSIONS ARE IN	
TOLERANCES:	
.XX ±	
.XXX ±	
ANGULAR ± °	
MATERIAL	N/A
FINISH	N/A μinch

LIGO CALIFORNIA INSTITUTE OF TECHNOLOGY
 MASSACHUSETTS INSTITUTE OF TECHNOLOGY

SYSTEM: ADVANCED LIGO SUB-SYSTEM: AOS

NEXT ASSY: N/A

PART NAME: aLIGO AOS OpLev & PhotCal RX Pier RH Mock-Up

DESIGNER	C. CONLEY	06 NOV 2009	SIZE	DWG. NO.	REV.
DRAFTER	C. CONLEY	06 NOV 2009	D	D0902639	v1
CHECKER					
APPROVAL					

SCALE: NONE PROJECTION:

SHEET 1 OF 1

D0902639 aLIGO AOS OpLev & PhotCal RX Pier RH Mock-Up PART PDM REV: X-005 DRAWING PDM REV: X-004