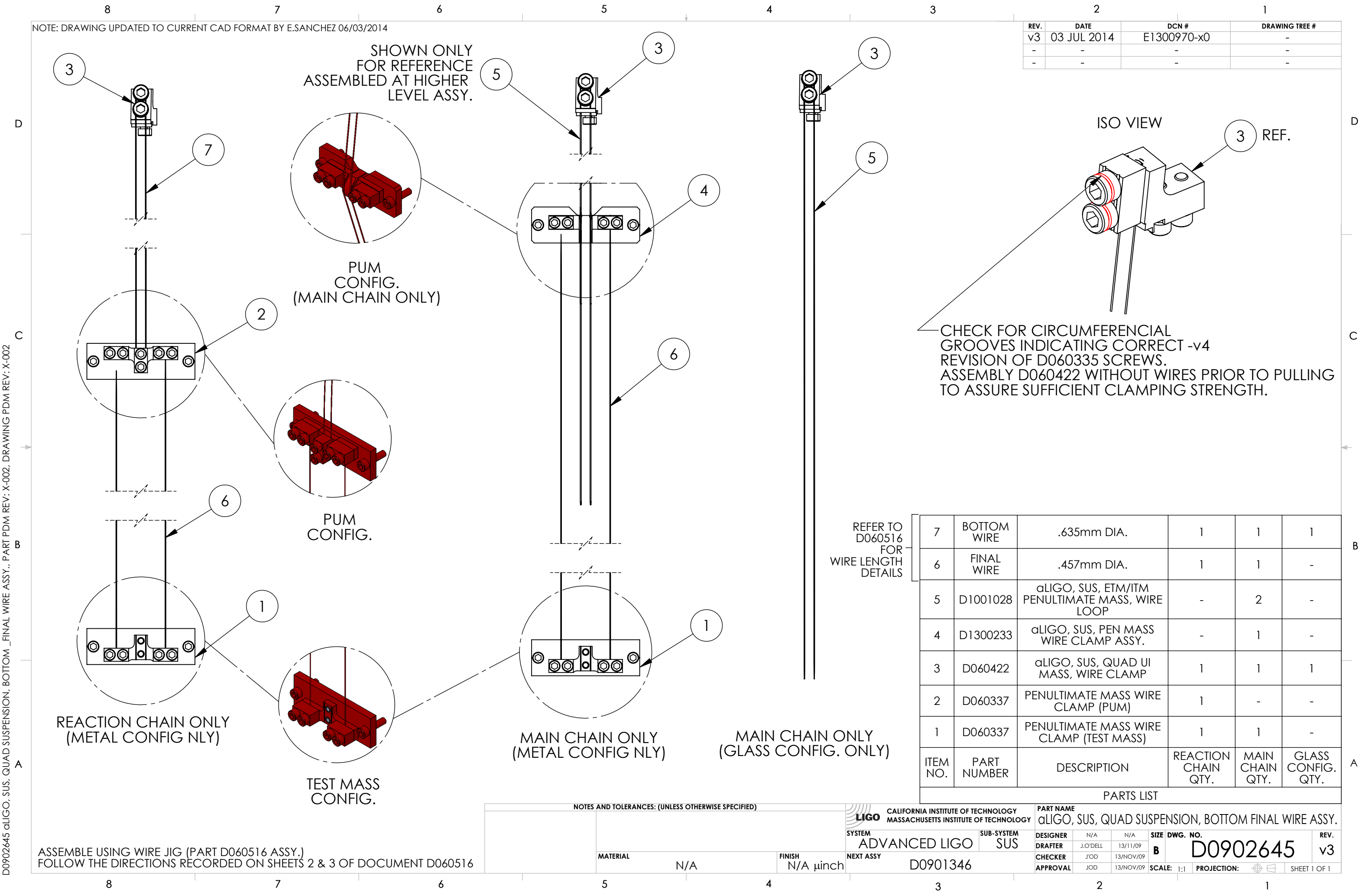


NOTE: DRAWING UPDATED TO CURRENT CAD FORMAT BY E.SANCHEZ 06/03/2014

REV.	DATE	DCN #	DRAWING TREE #
v3	03 JUL 2014	E1300970-x0	-
-	-	-	-
-	-	-	-



REFER TO D060516 FOR WIRE LENGTH DETAILS

ITEM NO.	PART NUMBER	DESCRIPTION	REACTION CHAIN QTY.	MAIN CHAIN QTY.	GLASS CONFIG. QTY.
7	BOTTOM WIRE	.635mm DIA.	1	1	1
6	FINAL WIRE	.457mm DIA.	1	1	-
5	D1001028	αLIGO, SUS, ETM/ITM PENULTIMATE MASS, WIRE LOOP	-	2	-
4	D1300233	αLIGO, SUS, PEN MASS WIRE CLAMP ASSY.	-	1	-
3	D060422	αLIGO, SUS, QUAD UI MASS, WIRE CLAMP	1	1	1
2	D060337	PENULTIMATE MASS WIRE CLAMP (PUM)	1	-	-
1	D060337	PENULTIMATE MASS WIRE CLAMP (TEST MASS)	1	1	-

PARTS LIST

ASSEMBLE USING WIRE JIG (PART D060516 ASSY.) FOLLOW THE DIRECTIONS RECORDED ON SHEETS 2 & 3 OF DOCUMENT D060516

NOTES AND TOLERANCES: (UNLESS OTHERWISE SPECIFIED)

MATERIAL		FINISH		NEXT ASSY		PART NAME		REV.	
N/A		N/A μinch		D0901346		αLIGO, SUS, QUAD SUSPENSION, BOTTOM FINAL WIRE ASSY.		v3	
LIGO CALIFORNIA INSTITUTE OF TECHNOLOGY MASSACHUSETTS INSTITUTE OF TECHNOLOGY SYSTEM ADVANCED LIGO SUB-SYSTEM SUS DESIGNER N/A N/A DRAFTER J.O'DELL 13/11/09 CHECKER J'OD 13/NOV/09 APPROVAL JOD 13/NOV/09				SIZE DWG. NO. B D0902645		SCALE: 1:1 PROJECTION:		SHEET 1 OF 1	

D0902645 αLIGO, SUS, QUAD SUSPENSION, BOTTOM_FINAL WIRE ASSY., PART PDM REV: X-002, DRAWING PDM REV: X-002