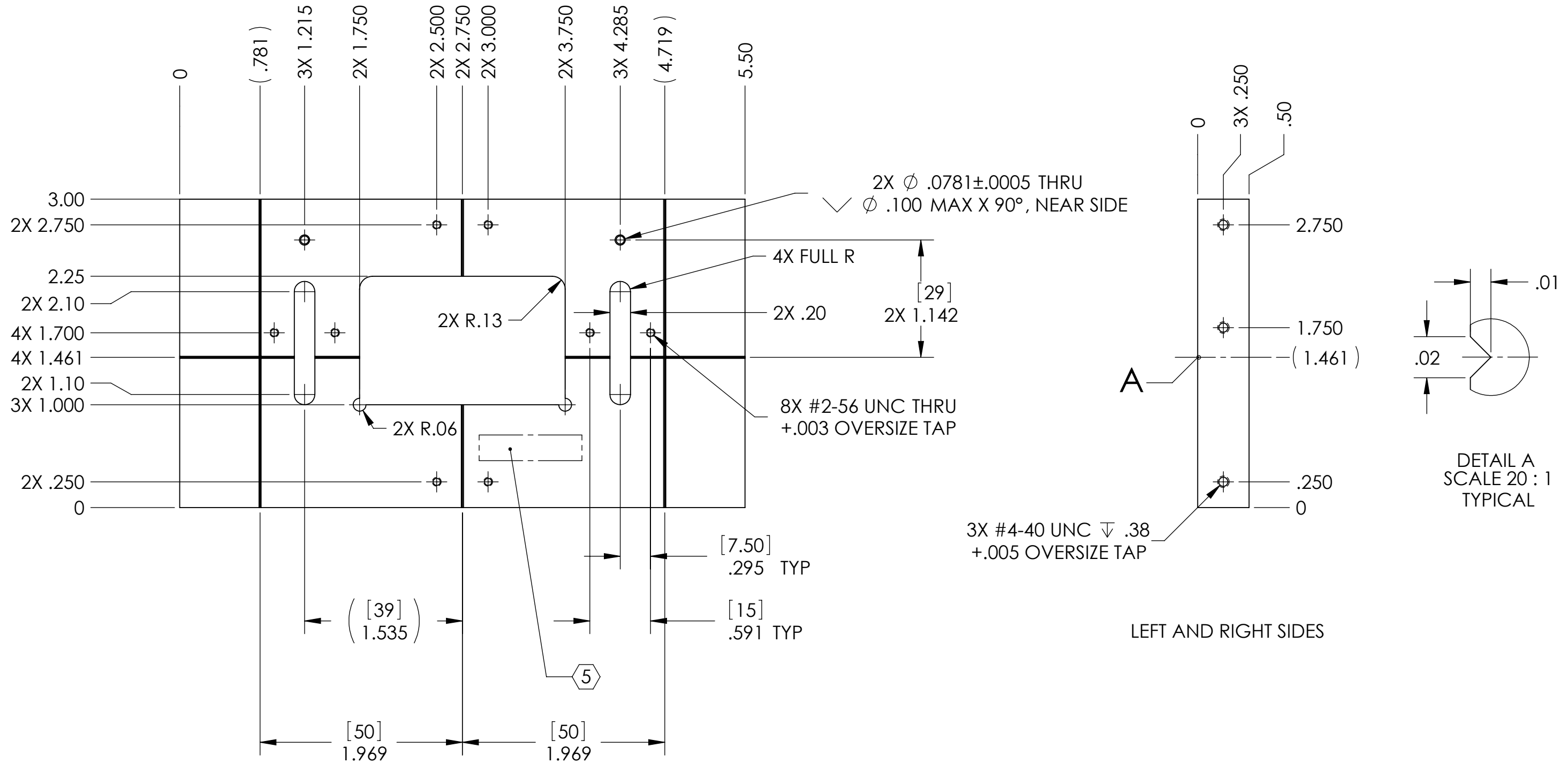


D0902665_Advanced_LIGO_SUS_HLTS_Bonding_Template_Front_Sapphire_Prism_PART PDM REV: V2-000, DRAWING PDM REV: V2-003

NOTES CONTINUED:
 5. SCRIBE, ENGRAVE, OR MECHANICALLY STAMP (NO INKS OR DYES) DRAWING PART NUMBER, REVISION (AND VARIANT OR "TYPE" IF APPLICABLE) ON NOTED SURFACE OF PART FOLLOWED ON THE NEXT LINE WITH A THREE DIGIT SERIAL NUMBER. SERIAL NUMBERS START AT 001 FOR THE FIRST ARTICLE AND PROCEED CONSECUTIVELY. USE MINIMUM 0.12" HIGH CHARACTERS, UNLESS THE SIZE OF THE PART DICTATES SMALLER CHARACTERS. A VIBRATORY TOOL MAY BE USED.
 EXAMPLE: DXXXXXX-VY, TYPE-XX, S/N XXX
 6. MACHINE ALL SURFACES TO REMOVE OXIDES AND MILL FINISH. USE OF ABRASIVE REMOVAL TECHNIQUES IS NOT ALLOWED.
 7. ALL PARTS SHALL BE MANUFACTURED IN ACCORDANCE WITH LIGO SPECIFICATION E0900364.

REV.	DATE	DCN #	DRAWING TREE #
v1	22 OCT 2009	E0900369	E080191
v2	02 SEP 2011	E1100826	E080191
v3	14 DEC 2011	E1101195	E080191



DIMENSIONS ARE IN INCHES [MM]	
TOLERANCES:	.XX ± .01
	.XXX ± .005
ANGULAR ± 0.5°	

NOTES AND TOLERANCES: (UNLESS OTHERWISE SPECIFIED)	
1. INTERPRET DRAWING PER ASME Y14.5-1994.	
2. REMOVE ALL SHARP EDGES, R.02 MIN.	
3. DO NOT SCALE FROM DRAWING.	
4. ALL MACHINING FLUIDS MUST BE FULLY SYNTHETIC, FULLY WATER SOLUBLE AND FREE OF SULFUR, SILICONE, AND CHLORINE.	

MATERIAL	FINISH
6061-T6 Al	63 μinch

CALIFORNIA INSTITUTE OF TECHNOLOGY MASSACHUSETTS INSTITUTE OF TECHNOLOGY		PART NAME	
SYSTEM ADVANCED LIGO		SUB-SYSTEM SUS	
DESIGNER	D. BRIDGES	02 SEP 2011	SIZE DWG. NO.
DRAFTER	D. BRIDGES	15 DEC 2011	B
CHECKER	B. MOORE	15 DEC 2011	D0902665
APPROVAL			REV. v3
SCALE: 1:1		PROJECTION:	SHEET 1 OF 2

DETAIL A
 SCALE 20 : 1
 TYPICAL

LEFT AND RIGHT SIDES

D0902665_Advanced_LIGO_SUS_HLIS_Bonding_Template_Front_Sapphire_Prism_PART PDM REV: V2-000, DRAWING PDM REV: V2-003

8 7 6 5 4 3 2 1

D

D

C

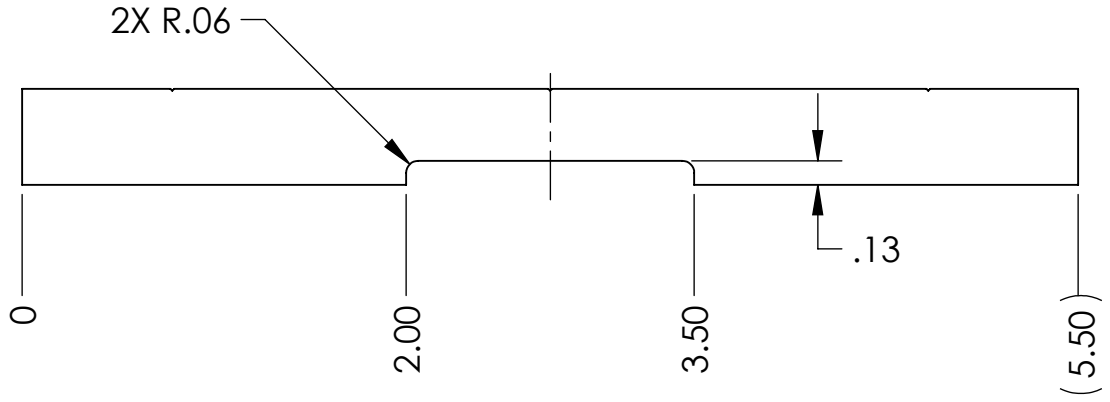
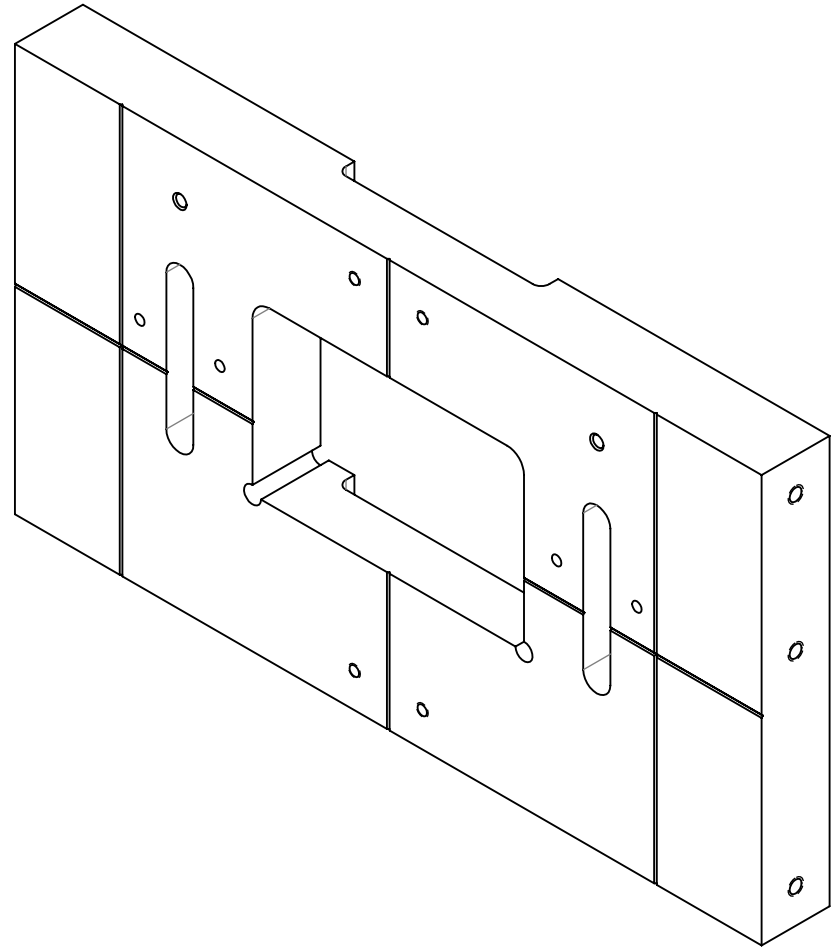
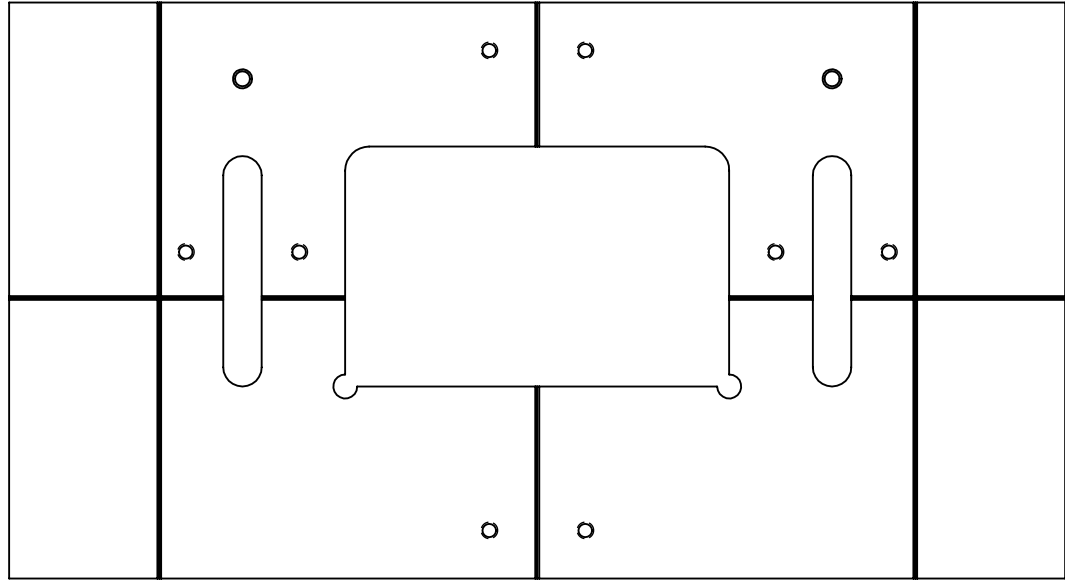
C

B

B

A

A



 CALIFORNIA INSTITUTE OF TECHNOLOGY MASSACHUSETTS INSTITUTE OF TECHNOLOGY		
SIZE	DWG. NO.	REV.
B	D0902665	v3
SCALE: 1:1	PROJECTION:	SHEET 2 OF 2

8 7 6 5 4 3 2 1