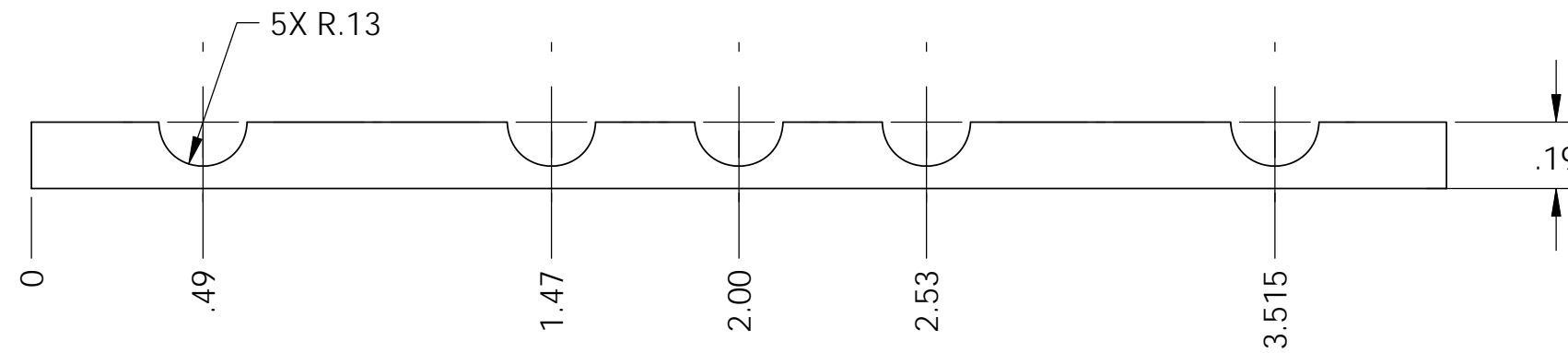
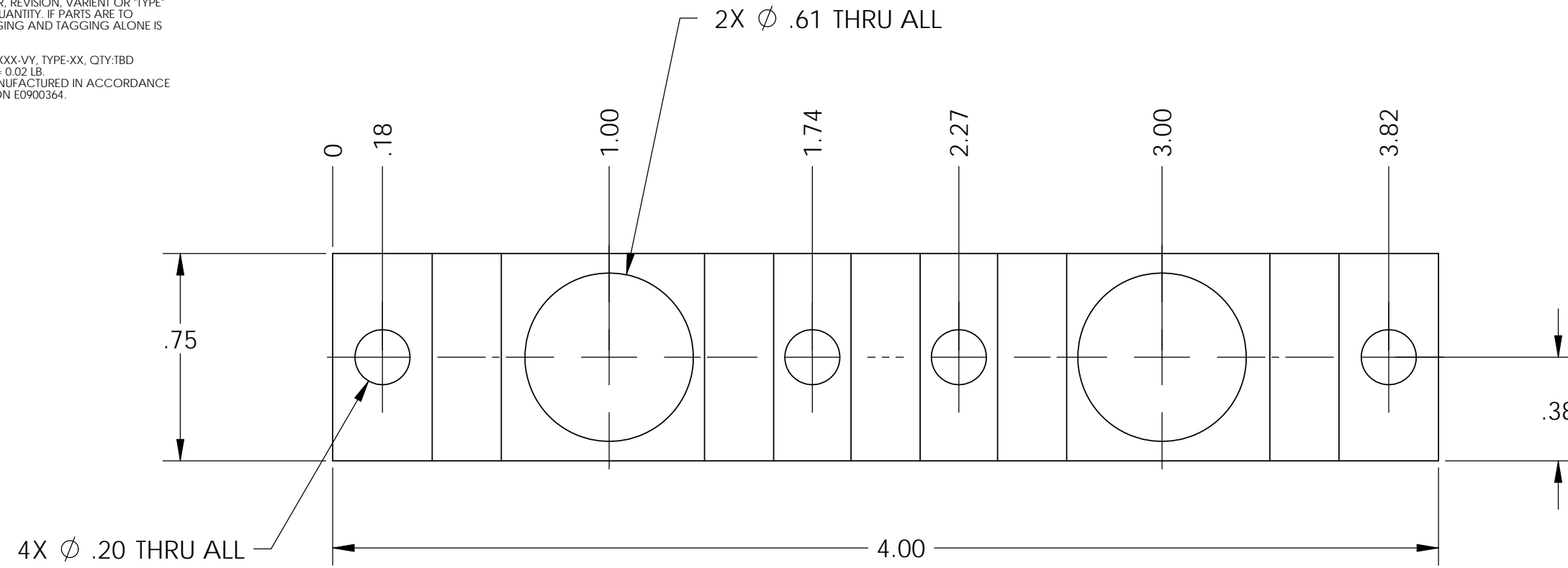


D0902673 Joint Cable Tie, aLIGO BSC-ISI, PART PDM REV: X-006, DRAWING PDM REV: X-009

NOTES CONTINUED:
 5. SCRIBE, ENGRAVE, OR MECHANICALLY STAMP (NO DYES OR INKS) A UNIQUE THREE DIGIT SERIAL NUMBER & REVISION NUMBER ON EACH PART. SERIAL NUMBERS START AT 001 FOR THE FIRST ARTICLE AND PROCEED CONSECUTIVELY. BAG AND TAG PARTS WITH THEIR DRAWING PART NUMBER, REVISION, VARIANT OR "TYPE" (IF APPLICABLE), AND QUANTITY. IF PARTS ARE TOO SMALL TO SCRIBE, BAGGING AND TAGGING ALONE IS SUFFICIENT.
 EXAMPLE (PART): 001-V1
 EXAMPLE (TAG): DXXXXXXX-VY, TYPE-XX, QTY:TBD
 6. APPROXIMATE WEIGHT = 0.02 LB.
 7. ALL PARTS SHALL BE MANUFACTURED IN ACCORDANCE WITH LIGO SPECIFICATION E0900364.

REV.	DATE	DCN #	DRAWING TREE #
v1	10 May 2010	E1000157	E1000025



NOTES AND TOLERANCES: (UNLESS OTHERWISE SPECIFIED)				LIGO CALIFORNIA INSTITUTE OF TECHNOLOGY MASSACHUSETTS INSTITUTE OF TECHNOLOGY		PART NAME	
DIMENSIONS ARE IN INCHES		1. INTERPRET DRAWING PER ASME Y14.5-1994. 2. REMOVE ALL SHARP EDGES, R.02 MIN.		SYSTEM		ADVANCED LIGO SEI	
TOLERANCES: .XX ± .015 .XXX ± .005		3. DO NOT SCALE FROM DRAWING. 4. ALL MACHINING FLUIDS MUST BE FULLY SYNTHETIC, FULLY WATER SOLUBLE AND FREE OF SULFUR, SILICONE, AND CHLORINE.		SUB-SYSTEM		DESIGNER A.LEROUX 01 Mar. 2010	
ANGULAR ± .5°		MATERIAL FLUOROELASTOMER		NEXT ASSY		D0902670	
FINISH 32 μinch		APPROVAL K.MASON 01 Mar. 2010		CHECKER F.MATICHARD 01 Mar. 2010		DRAFT M.HILLARD 01 Mar. 2010	
SCALE: 2:1		PROJECTION:		SIZE DWG. NO.		REV.	
				B D0902673		v1	
				SHEET 1 OF 1			