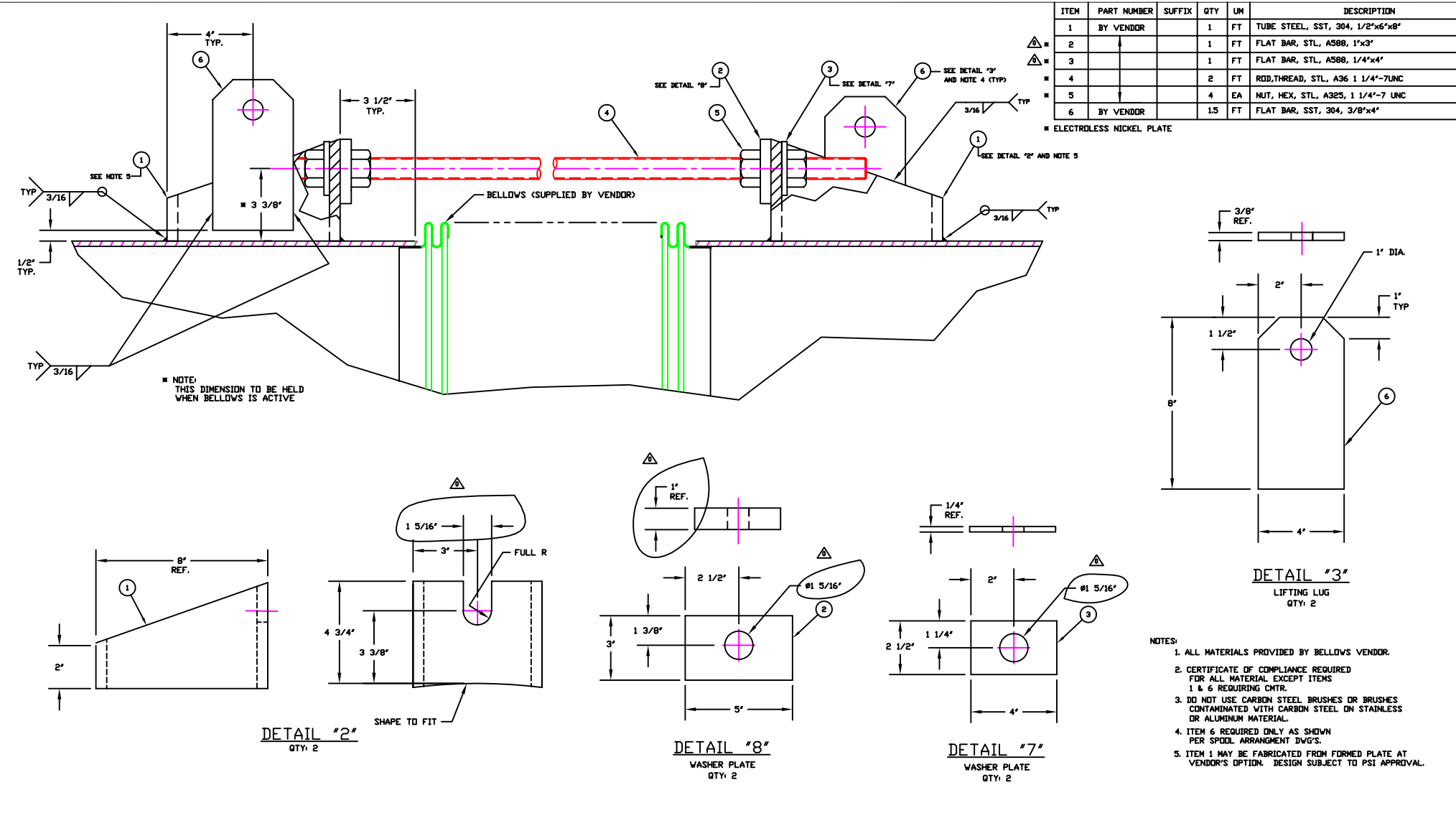


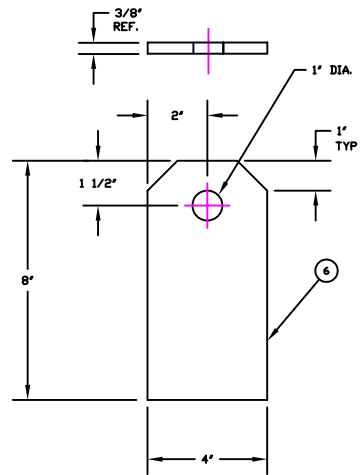
1.25 INCH BELLOWS TIE-ROD ASSEMBLY - ADVANCED LIGO # - D0902728-v1



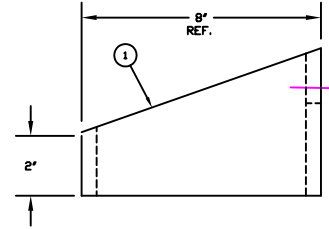
ITEM	PART NUMBER	SUFFIX	QTY	UM	DESCRIPTION
1	BY VENDOR		1	FT	TUBE STEEL, SST, 304, 1/2"x6"x8"
2			1	FT	FLAT BAR, STL, A588, 1"x3"
3			1	FT	FLAT BAR, STL, A588, 1/4"x4"
4			2	FT	ROD, THREAD, STL, A36 1 1/4"-7UNC
5			4	EA	NUT, HEX, STL, A325, 1 1/4"-7 UNC
6	BY VENDOR		1.5	FT	FLAT BAR, SST, 304, 3/8"x4"

■ ELECTROLESS NICKEL PLATE

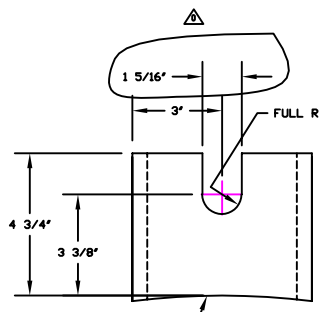
■ NOTE:
THIS DIMENSION TO BE HELD
WHEN BELLOWS IS ACTIVE



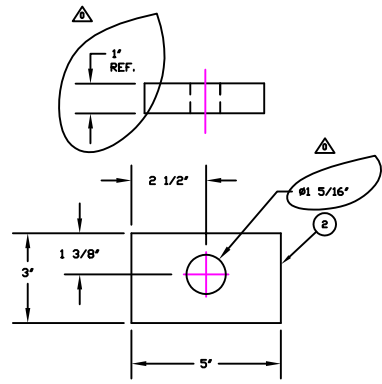
DETAIL "3"
LIFTING LUG
QTY: 2



DETAIL "2"
QTY: 2



DETAIL "8"
WASHER PLATE
QTY: 2



DETAIL "7"
WASHER PLATE
QTY: 2

- NOTES:
1. ALL MATERIALS PROVIDED BY BELLOWS VENDOR.
 2. CERTIFICATE OF COMPLIANCE REQUIRED FOR ALL MATERIAL EXCEPT ITEMS 1 & 6 REQUIRING OHTR.
 3. DO NOT USE CARBON STEEL BRUSHES OR BRUSHES CONTAMINATED WITH CARBON STEEL ON STAINLESS OR ALUMINUM MATERIAL.
 4. ITEM 6 REQUIRED ONLY AS SHOWN PER SPOOL ARRANGMENT DWG'S.
 5. ITEM 1 MAY BE FABRICATED FROM FORMED PLATE AT VENDOR'S OPTION. DESIGN SUBJECT TO PSI APPROVAL.

<p>PROPRIETARY AND CONFIDENTIAL</p> <p>THIS DOCUMENT CONTAINS PROPRIETARY INFORMATION BELONGING TO PROCESS SYSTEMS INTERNATIONAL, INC. OR ITS AFFILIATED COMPANIES AND SHALL BE USED ONLY FOR THE PURPOSE FOR WHICH IT WAS SUPPLIED. IT SHALL NOT BE COPIED, REPRODUCED OR OTHERWISE USED, NOR SHALL SUCH INFORMATION BE FURNISHED IN WHOLE OR IN PART TO OTHERS EXCEPT IN ACCORDANCE WITH THE TERMS OF ANY AGREEMENT UNDER WHICH IT WAS SUPPLIED OR WITH THE PRIOR WRITTEN CONSENT OF PROCESS SYSTEMS INTERNATIONAL, INC. AND SHALL BE RETURNED UPON REQUEST.</p>		<p>UNLESS OTHERWISE SPECIFIED</p> <p>DIMENSIONS ARE IN INCHES</p> <p>TOLERANCES:</p> <p>FRACTIONAL: ±.1</p> <p>AND LARGER: ±.005</p> <p>AND SMALLER: ±.002</p> <p>AND THREE PLACE DECIMAL: ±.001</p> <p>AND FINISHED SURFACE: ±.001</p> <p>UNLESS OTHERWISE SPECIFIED IN DRAWING ALL DIMENSIONS ARE TO BE MAINTAINED</p>		<p>DO NOT SCALE THIS DRAWING</p> <p>USED DR: 0</p> <p>NEXT ASS'Y: 4</p>		<p>RELEASED FOR FAB BY VENDOR</p> <p>REV: 0</p> <p>DESCRIPTION: BELLOWS TIE-ROD ASSEMBLY</p> <p>ISSUE DESCRIPTION: 1.25 INCH BELLOWS TIE-ROD ASSEMBLY - ADVANCED LIGO # - D0902728-v1</p>		<p>PV: 12/3/96</p> <p>0403</p> <p>CHKD: DRVN</p> <p>DATE: 12/3/96</p> <p>SEDR: 0403</p>		<p>SCALE: HALF</p> <p>SHEET: 1 OF 1</p>	
<p>PROPERTY AND CONFIDENTIAL</p> <p>THIS DOCUMENT CONTAINS PROPRIETARY INFORMATION BELONGING TO PROCESS SYSTEMS INTERNATIONAL, INC. OR ITS AFFILIATED COMPANIES AND SHALL BE USED ONLY FOR THE PURPOSE FOR WHICH IT WAS SUPPLIED. IT SHALL NOT BE COPIED, REPRODUCED OR OTHERWISE USED, NOR SHALL SUCH INFORMATION BE FURNISHED IN WHOLE OR IN PART TO OTHERS EXCEPT IN ACCORDANCE WITH THE TERMS OF ANY AGREEMENT UNDER WHICH IT WAS SUPPLIED OR WITH THE PRIOR WRITTEN CONSENT OF PROCESS SYSTEMS INTERNATIONAL, INC. AND SHALL BE RETURNED UPON REQUEST.</p>		<p>PROPERTY AND CONFIDENTIAL</p> <p>THIS DOCUMENT CONTAINS PROPRIETARY INFORMATION BELONGING TO PROCESS SYSTEMS INTERNATIONAL, INC. OR ITS AFFILIATED COMPANIES AND SHALL BE USED ONLY FOR THE PURPOSE FOR WHICH IT WAS SUPPLIED. IT SHALL NOT BE COPIED, REPRODUCED OR OTHERWISE USED, NOR SHALL SUCH INFORMATION BE FURNISHED IN WHOLE OR IN PART TO OTHERS EXCEPT IN ACCORDANCE WITH THE TERMS OF ANY AGREEMENT UNDER WHICH IT WAS SUPPLIED OR WITH THE PRIOR WRITTEN CONSENT OF PROCESS SYSTEMS INTERNATIONAL, INC. AND SHALL BE RETURNED UPON REQUEST.</p>		<p>PROPERTY AND CONFIDENTIAL</p> <p>THIS DOCUMENT CONTAINS PROPRIETARY INFORMATION BELONGING TO PROCESS SYSTEMS INTERNATIONAL, INC. OR ITS AFFILIATED COMPANIES AND SHALL BE USED ONLY FOR THE PURPOSE FOR WHICH IT WAS SUPPLIED. IT SHALL NOT BE COPIED, REPRODUCED OR OTHERWISE USED, NOR SHALL SUCH INFORMATION BE FURNISHED IN WHOLE OR IN PART TO OTHERS EXCEPT IN ACCORDANCE WITH THE TERMS OF ANY AGREEMENT UNDER WHICH IT WAS SUPPLIED OR WITH THE PRIOR WRITTEN CONSENT OF PROCESS SYSTEMS INTERNATIONAL, INC. AND SHALL BE RETURNED UPON REQUEST.</p>		<p>PROPERTY AND CONFIDENTIAL</p> <p>THIS DOCUMENT CONTAINS PROPRIETARY INFORMATION BELONGING TO PROCESS SYSTEMS INTERNATIONAL, INC. OR ITS AFFILIATED COMPANIES AND SHALL BE USED ONLY FOR THE PURPOSE FOR WHICH IT WAS SUPPLIED. IT SHALL NOT BE COPIED, REPRODUCED OR OTHERWISE USED, NOR SHALL SUCH INFORMATION BE FURNISHED IN WHOLE OR IN PART TO OTHERS EXCEPT IN ACCORDANCE WITH THE TERMS OF ANY AGREEMENT UNDER WHICH IT WAS SUPPLIED OR WITH THE PRIOR WRITTEN CONSENT OF PROCESS SYSTEMS INTERNATIONAL, INC. AND SHALL BE RETURNED UPON REQUEST.</p>		<p>PROPERTY AND CONFIDENTIAL</p> <p>THIS DOCUMENT CONTAINS PROPRIETARY INFORMATION BELONGING TO PROCESS SYSTEMS INTERNATIONAL, INC. OR ITS AFFILIATED COMPANIES AND SHALL BE USED ONLY FOR THE PURPOSE FOR WHICH IT WAS SUPPLIED. IT SHALL NOT BE COPIED, REPRODUCED OR OTHERWISE USED, NOR SHALL SUCH INFORMATION BE FURNISHED IN WHOLE OR IN PART TO OTHERS EXCEPT IN ACCORDANCE WITH THE TERMS OF ANY AGREEMENT UNDER WHICH IT WAS SUPPLIED OR WITH THE PRIOR WRITTEN CONSENT OF PROCESS SYSTEMS INTERNATIONAL, INC. AND SHALL BE RETURNED UPON REQUEST.</p>		<p>PROPERTY AND CONFIDENTIAL</p> <p>THIS DOCUMENT CONTAINS PROPRIETARY INFORMATION BELONGING TO PROCESS SYSTEMS INTERNATIONAL, INC. OR ITS AFFILIATED COMPANIES AND SHALL BE USED ONLY FOR THE PURPOSE FOR WHICH IT WAS SUPPLIED. IT SHALL NOT BE COPIED, REPRODUCED OR OTHERWISE USED, NOR SHALL SUCH INFORMATION BE FURNISHED IN WHOLE OR IN PART TO OTHERS EXCEPT IN ACCORDANCE WITH THE TERMS OF ANY AGREEMENT UNDER WHICH IT WAS SUPPLIED OR WITH THE PRIOR WRITTEN CONSENT OF PROCESS SYSTEMS INTERNATIONAL, INC. AND SHALL BE RETURNED UPON REQUEST.</p>	
8	7	6	5	4	3	2	1				

PROCESS SYSTEMS INTERNATIONAL, INC.
 20 WALDEN DR. WESTBOROUGH, MASSACHUSETTS 01581 USA
BELLOWS TIE-ROD ASSEMBLY
 1 1/4" ROD DIA.
 LIGO VACUUM EQUIPMENT