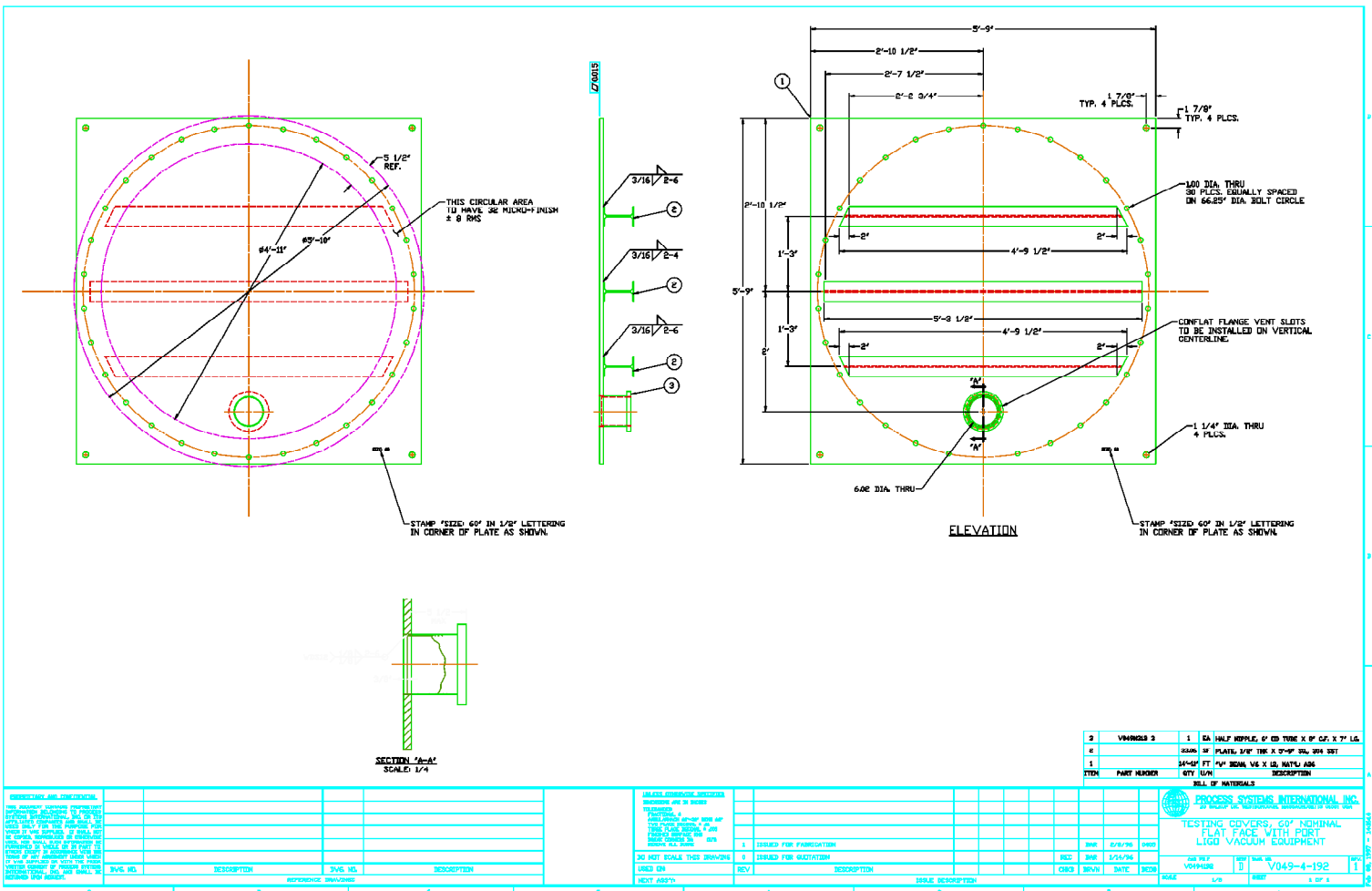


TYPICAL VACUUM TEST DOOR - ADVANCED LIGO # _LIGO D0902729-v1
 (THIS TYPICAL DESIGN IS PRESENTED FOR INFORMATION ONLY)



2	VARIABLES 2	1	EA	HALF BOTTLE, 6" ED TUBE X 8" CF, X 7" LG
4		1	EA	PLATE, 3/16" THK X 57" W, 30H, 30H, 30H
1		1	EA	3/4" DIA. 1/4" DIA. 1/4" DIA. 1/4" DIA. 1/4" DIA.
1		1	EA	1/4" DIA. 1/4" DIA. 1/4" DIA. 1/4" DIA.

PROCESS SYSTEMS INTERNATIONAL, INC.	
TESTING COVERS, 60" NOMINAL FLAT FACE WITH PORT LIGO VACUUM EQUIPMENT	
REV	DATE
1	04/19/92
1	04/19/92

REV	DATE	BY	CHKD	APP'D
1	04/19/92			
2	04/19/92			
3	04/19/92			
4	04/19/92			
5	04/19/92			
6	04/19/92			
7	04/19/92			
8	04/19/92			